



no boundaries

03 EXPLORER



Limited
Eddie Bauer
NBX

XLT Sport

Safety & Security

Driving Dynamics

Comfort & Convenience

Specifications

Paint/Trim/Wheels





Explorer Limited in Ceramic White Tri-Coat Metallic.

LIMITED

Under the skin, the Limited is Explorer-tough. But if your pursuits are sometimes more refined, it's as comfortable out on the town as it is on a gravel switchback. Inside, you'll find luxury leather seating surfaces, 6-way power, heated front bucket seats with driver-side memory (2 positions), even power adjustable accelerator and brake pedals with a memory feature. The 290-watt Audiophile sound system features a 6-disc in-dash

CD player and seven premium speakers. For the ultimate in entertainment, a DVD system with wireless head-phone sets is available. Third-row passengers have the most head room and leg room in the class, and their optional seat folds flat for lots of cargo room. Outside, the chrome wheels, grille and roof rails accent a monochromatic paint scheme. Limited: quietly elegant, ruggedly capable, totally luxurious.



Explorer Eddie Bauer in Black. Shown with optional roof rail crossbars.

EDDIE BAUER

The Explorer Eddie Bauer Edition has defined SUV style for more than a decade. For 2003, exterior trademarks include an Arizona Beige lower-body treatment and a satin-nickel finish on the grille and cast aluminum wheels. Luxury two-tone leather seating surfaces create a warm interior feel, and you can really heat things up with the standard 290-watt Audiophile 6-disc CD sound system.

The 6-way power adjustable heated front seats with driver-side memory, as well as power adjustable accelerator and brake pedals with memory, make the front row a very comfortable place. In fact, with its generous room, optional 7-passenger seating and fashionable good looks, the Eddie Bauer is really a comfortable choice for everybody.



NBX

If you like to play where the pavement ends, the new Explorer NBX is built for you. 17" wheels with beefy all-terrain tires are standard. Black side step bars, body cladding, bumpers and wheel-lip moldings lend an aggressive look and help hide dings. The standard, extendable, Yakima® LoadWarrior rack system with cargo net is the innovative way to carry your toys. NBX's rugged design is reflected inside as well. Unique "Impulse" upholstery can stand up to abuse. The cargo area's soft liner was designed to fit NBX's cargo area.

It comes with its own storage bag to help keep things clean and organized. And the rubber floor mats with deep channels can be washed off with a hose and then dirtied up again. Choose the Control Trac® 4x4 drivetrain for more off-road traction, and for travel in rough country, add the Off-Road Package with underbody skid plates and specially tuned suspension. When you're headed for the great wide open, there's no better way to get there than in Explorer NBX.



Explorer XLT Sport in Red Fire Metallic. Shown with optional roof rail crossbars.

XLT SPORT

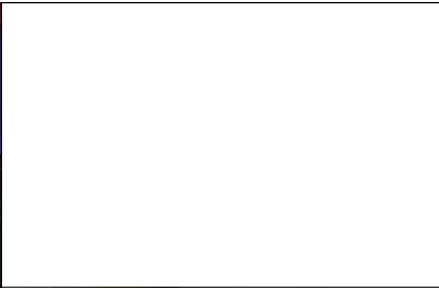
Take the very popular Explorer XLT, add the optional Sport Group and you've got XLT Sport, the stylish workhorse of the Explorer lineup. Platinum-gloss side step bars, cladding, wheel-lip moldings and two-tone front and rear fascias make a bold impression. And the 17" machined aluminum wheels and color-keyed door handles are handsome accents. But add the optional 3rd-row seat and XLT Sport's utility is front and center. It can take up to seven

passengers with lots of gear. And properly equipped, XLT Sport will even tow up to 7160 lbs. This versatility comes with standard creature comforts to make the ride easy. Like a 6-way power adjustable driver's seat with lumbar support and an 80-watt dual media CD/cassette audio system. When you've got lots to do and want to look good doing it, XLT Sport is the right vehicle for the job.

SAFETY & SECURITY



The Personal Safety System,[™] built into every Explorer, reacts in milliseconds to enhance your protection. In the event of an accident, sensors measure certain occupant conditions (such as whether or not safety belts are buckled), as well as the severity of impact. The system then adjusts the front safety belts' tension and determines if it should deploy the dual stage front airbags at one of two energy levels. Simply put, the Personal Safety System optimizes key safety features in an accident. The standard 4-wheel-disc anti-lock brakes help you avoid an accident. Explorer's safety-conscious design makes it a "Best Pick" by the Insurance Institute for Highway Safety. In its 40-mph frontal offset crash test, Explorer outperformed all other major competitors in its class.*



- 1 Even if you're on foot, Explorer lights your way. **Security approach lamps** on both side mirrors cast pools of light around the front doors to make nighttime entry easier and more secure. Standard on XLT, XLT Sport, NBX, Eddie Bauer and Limited.
- 2 **Steel beams** in the doors help prevent intrusion during side impacts. Along with front crush zones, the beams absorb the energy of certain impacts to help protect the driver and passengers.
- 3 *Motor Trend* called Explorer's **Safety Canopy[™] System** "the ultimate in SUV airbags." This available system uses advanced sensors to deploy side-curtain airbags** in certain types of side-impact collisions or rollover events. The airbags cover nearly 2/3 of the 1st- and 2nd-row side glass. They remain inflated for a longer duration to enhance head protection and help keep occupants inside the vehicle. Available on all models.
- 4 For added peace of mind, let the available **reverse sensing system** be a second set of eyes. With a series of beeps, it alerts you to certain objects behind the vehicle to help you gauge your distance.
- 5 **Tether anchors** located in the floor behind the seats help to secure child safety seats in 2nd and 3rd rows. Lower seat-mounted anchors are also located in the 2nd row (outboard positions) and 3rd row.



*Includes Chevrolet TrailBlazer/Blazer, Jeep Grand Cherokee, Dodge Durango, GMC Envoy and Toyota 4Runner. **Always wear your safety belt and secure children in the rear seat.

DRIVING DYNAMICS

No matter what kind of driving you do, Explorer's advanced driving dynamics systems can help make it more capable, comfortable and secure. Every Explorer features an independent rear suspension that delivers a smooth ride and precise handling. The optional AdvanceTrac™ Stability Control System further enhances the manners of V8-powered 4x2 and 4x4 models. Available All-Wheel Drive* helps limit wheel-slip to improve all-weather traction, without the need for any driver input. And the 4x4 Control Trac® system provides versatile capability, allowing the driver to choose 4x4 AUTO, 4x4 HIGH and 4x4 LOW settings. Driving dynamics systems can be ordered in different Explorer engine and drivetrain combinations to meet a wide range of driving needs.

- 1 Explorer's available **AdvanceTrac Stability Control System** enhances handling, especially on slippery road surfaces or on rough terrain. Using advanced sensors, it constantly monitors driving input and the vehicle's responses, then actively steps in, if necessary, to help maintain control. In certain understeer or oversteer situations, AdvanceTrac makes braking, traction control and throttle adjustments to correct vehicle direction to follow steering input. In fact, the system actually controls each individual wheel to counteract excessive vehicle rotation and possible vehicle spinout. And it does it almost imperceptibly.
- 2 The standard **independent rear suspension** gives Explorer its outstanding ride and handling. This suspension design allows each rear wheel to respond to road impacts without affecting the opposite wheel, resulting in a remarkably smooth, comfortable ride. Because it helps to optimize tire-to-road contact, the suspension also provides responsive handling and driving control. Its design even allowed us to raise the ground clearance while reducing step-in height.

*Late availability.



INTERIOR COMFORT & CONVENIENCE

- 1 The **290-watt digital Audiophile sound system** features a 6-disc in-dash CD player and seven premium speakers. Standard on Limited and Eddie Bauer. Optional on XLT, XLT Sport and NBX.
- 2 Keep the troops entertained with the **rear-seat DVD entertainment system.*** The DVD player comes with a fold-down 7" LCD screen and two wireless headphone sets. You can also play music CDs separately from the in-dash audio system. Available on most models.
- 3 The **rear-cargo under-floor storage** is like a secret compartment.
- 4 It's easy to find the right driving position with **power adjustable pedals.** They're optional on XLT, XLT Sport and NBX; standard on Eddie Bauer and Limited, with memory settings.

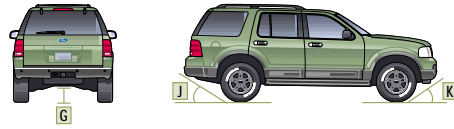
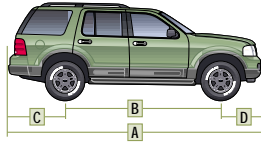
*Late availability.



Eddie Bauer interior in Medium Parchment leather.

Explorer has always been about space. Need people space? There's room for seven with the optional 3rd-row seat. Need cargo space? Just fold the optional 3rd-row seat down into the floor. You can even fold the 2nd-row seat multiple ways to take on people or cargo. It's a standard 60/40 split or a very flexible 40/20/40 split (with the optional 3rd-row seat). Handy storage compartments give you space to tuck things away. There's even a space under the cargo floor, thanks to the independent rear suspension. It allows for a lower rear floor and more interior room. Explorer also features a stiff bodysell with a fully boxed frame designed for a quiet, solid ride.

SPECIFICATIONS



Exterior	4x2/4x4
A. Overall length	189.5"
B. Wheelbase	113.8"
C. Overhang – rear	44.1"
D. Overhang – front	31.6"
E. Overall width	72.1"
F. Height	71.4"
G. Ground clearance (rear axle)	8.5"
H. Load floor height	30.7"
I. Ramp breakover angle	18.2°
J. Angle of departure	23.9°
K. Angle of approach	27.7°
Interior	
1st row	
Head room	39.9"
Shoulder room	59.1"
Hip room	55.0"
Leg room	42.4"
2nd row	
Head room	38.9"
Shoulder room	58.9"
Hip room	54.2"
Leg room	35.9"
3rd row	
Head room	39.0"
Shoulder room	52.4"
Hip room	45.3"
Leg room	34.8"
Maximum cargo volume (cu. ft.)	5-pass./7-pass.
With 2nd-row seat upright	48.6/44.5
With rear seats folded	86.2/79.9
With 3rd-row seat upright	– /13.7

STANDARD FEATURES

Mechanical
4.0L SOHC V6 engine
4-wheel disc anti-lock braking system (ABS)
5-speed electronic automatic transmission with overdrive lockout
Axle ratio – 3.55:1
Body-on-frame construction
Fuel tank – 22.5-gallon capacity
Power rack-and-pinion steering
Stabilizer bars – Front and rear
Suspension – 4-wheel independent
Safety/Security
Personal Safety System™ for driver and front passenger – Dual stage airbags, dual threshold airbags, safety belt pretensioners, energy management retractors, safety belt usage sensing, driver's seat position sensing, crash severity sensing, and restraint control module
Autolock – Doors lock automatically when driving
Battery saver
Belt-Minder™ safety belt reminder
Brake/shift interlock
Bumpers – Energy-absorbing
Fuel pump inertia shutoff switch
Height-adjustable safety belts – 1st and 2nd rows
LATCH – Lower anchors (2nd row outboard and 3rd row) and tether anchors (2nd and 3rd rows) for child safety seats
Remote keyless entry with illuminated entry
SecuriLock™ – Passive anti-theft system
Side intrusion door beams
Seating
5-passenger seating
2nd-row 60/40 split-folding bench seat
Interior
Accessory delay for power features (includes interior cargo area lock)
Air conditioning
Assist handles
Coat hooks – 2 in rear seat area, 2 in cargo area
Dome lights – Front and cargo area
Front center floor console with storage bin, 2 front and 2 rear cupholders, power point, coin holder, tissue/map holder and pen holder
Load floor tie-down hooks – 4
Map pockets with 20-oz. beverage holders
Power door locks with rear door child safety locks
Power lock switch in cargo area
Power windows with one-touch-down driver's side feature
Speed control
Storage area under rear cargo floor
Tilt steering column
Visors with covered mirrors (dual illuminated on XLT, XLT Sport, NBX, Eddie Bauer and Limited)
Exterior
Grille – Black
Headlamps – Complex reflector
Liftgate with flip-up glass and exterior release
Power, fold-away outside mirrors (heated on Eddie Bauer and Limited)
Privacy glass (rear doors, rear quarter windows and liftgate window)
Roof rails – Black (chrome on Limited)
Solar tinted glass (windshield and front doors)
Trailer tow – Class II receiver with 4-pin connector
Windshield wipers – Front: speed-sensitive, dual-intermittent with washer; rear: intermittent with washer and defroster

MODEL-SPECIFIC FEATURES/OPTIONS

	XLS	XLS Sport	XLT	XLT Sport
Mechanical				
4.6L SOHC V8 engine	—	—	—	—
16" full-face steel wheels (16" steel spare)	—	—	—	—
16" painted cast aluminum wheels (16" steel spare)	—	—	—	—
17" machined aluminum wheels (17" aluminum spare)	—	—	—	—
P235/70R16 all-season BSW tires	—	—	—	—
P235/70R16 all-season OWL tires	—	—	—	—
P245/65R17 all-terrain OWL tires	—	—	—	—
AdvanceTrac™ Stability Control System*	—	—	—	—
Control Trac™ 4WD system (4x4)	—	—	—	—
Full-time 4WD system (all-wheel drive)	—	—	—	—
Limited slip rear axle	—	—	—	—
Off-Road Package (4x4 only, see description on page 21)	—	—	—	—
Safety/Security				
Autolamp – Automatic on/off headlamps	—	—	—	—
Safety Canopy™ System	—	—	—	—
Security approach lamps – Mounted in side mirrors	—	—	—	—
Seating				
Cloth trim with 1st-row low-back bucket seats	—	—	—	—
Cloth trim with 1st-row low-back sport bucket seats, power driver's seat and driver/front passenger manual lumbar supports	—	—	—	—
Leather seating surfaces (vinyl 3rd row, if equipped)	—	—	—	—
3rd-row cloth bench seat with 2nd-row 40/20/40 split-folding bench (vinyl 3rd row when ordered with leather seating surfaces)	—	—	—	—
Interior				
AM/FM stereo with single CD/cassette player (80 watts)	—	—	—	—
AM/FM Audiophile stereo with 6-disc in-dash CD player (290 watts)	—	—	—	—
Auxiliary rear climate controls	—	—	—	—
Cargo shade (not available with optional 3rd-row seat)	—	—	—	—
Electrochromic auto-dimming rearview mirror	—	—	—	—
Floor mats – Color-keyed carpeted (front and rear)	—	—	—	—
High-series center floor console – Includes storage bin, 2 front and 2 rear cupholders, front/rear power points, coin holder, tissue/map holder, pen holder and rear heat/AC vents	—	—	—	—
Leather-wrapped steering wheel	—	—	—	—
Overhead console – Includes 2 map/dome lights, ticket clip, sunglasses holder, and garage door opener holder (not available with auxiliary rear climate controls or moonroof)	—	—	—	—
Power adjustable accelerator and brake pedals	—	—	—	—
Rear-seat DVD entertainment system – Includes DVD player, ceiling-mounted pull-down 7" color LCD screen, remote control, video jacks for games and wireless headphone sets**	—	—	—	—
Exterior				
Bodyside cladding – Lower, molded-in color	—	—	—	—
Bodyside cladding – Lower, painted-platinum with two-tone fascias	—	—	—	—
Crossbars for roof rails	—	—	—	—
Fog lamps	—	—	—	—
Grille – Chrome	—	—	—	—
Keyless entry keypad – Driver's door-mounted	—	—	—	—
Power moonroof	—	—	—	—
Reverse sensing system	—	—	—	—
Running boards – Black	—	—	—	—
Side step bars – Black on XLS Sport, platinum on XLT Sport	—	—	—	—
Trailer tow prep package – Class III/IV (included with AdvanceTrac™)	—	—	—	—
Wheel-lip moldings – Medium dark platinum molded-in color; painted platinum on XLT Sport	—	—	—	—

■ Standard □ Optional — Not Available

*Requires V8 engine and power adjustable pedals. Includes 3.73 non-limited slip rear axle.

**Requires moonroof and Safety Canopy™ System in combination or auxiliary climate controls.

NBX		
Eddie Bauer Limited		
Mechanical		
<input type="checkbox"/>	<input type="checkbox"/>	4.6L SOHC V8 engine
<input checked="" type="checkbox"/>	<input type="checkbox"/>	17" machined aluminum wheels (17" aluminum spare)
<input type="checkbox"/>	<input checked="" type="checkbox"/>	17" satin-nickel cast aluminum wheels (17" aluminum spare)
<input type="checkbox"/>	<input type="checkbox"/>	17" chromed cast aluminum wheels (17" aluminum spare)
<input checked="" type="checkbox"/>	<input checked="" type="checkbox"/>	P245/65R17 all-terrain OWL tires
<input type="checkbox"/>	<input type="checkbox"/>	P245/65R17 all-terrain BSW tires
<input type="checkbox"/>	<input type="checkbox"/>	AdvanceTrac™ Stability Control System*
<input type="checkbox"/>	<input type="checkbox"/>	Control Trac® 4WD system (4x4)
<input type="checkbox"/>	<input type="checkbox"/>	Full-time AWD system (all-wheel drive)
<input type="checkbox"/>	<input type="checkbox"/>	Off-Road Package (4x4 only, see description lower right)
Safety/Security		
<input checked="" type="checkbox"/>	<input checked="" type="checkbox"/>	Autolamp – Automatic on/off headlamps
<input type="checkbox"/>	<input type="checkbox"/>	Safety Canopy™ System
<input checked="" type="checkbox"/>	<input checked="" type="checkbox"/>	Security approach lamps – Keyless entry-activated, mounted in side mirrors
Seating		
<input checked="" type="checkbox"/>	<input type="checkbox"/>	Unique "Impulse" cloth trim, 1st-row low-back sport bucket seats with power driver's seat and driver/passenger manual lumbar supports
<input type="checkbox"/>	<input checked="" type="checkbox"/>	Luxury leather seating surfaces, 1st-row heated power bucket seats with driver/passenger manual lumbar supports and 2-position driver's memory seat (two-tone on Eddie Bauer)
<input type="checkbox"/>	<input type="checkbox"/>	3rd-row cloth bench seat with 2nd-row 40/20/40 split-folding bench (vinyl 3rd row when ordered with leather seating surfaces)
Interior		
<input checked="" type="checkbox"/>	<input type="checkbox"/>	AM/FM stereo with single CD/cassette player (80 watts)
<input type="checkbox"/>	<input checked="" type="checkbox"/>	AM/FM Audiophile stereo with 6-disc in-dash CD player (290 watts)
<input type="checkbox"/>	<input type="checkbox"/>	Auxiliary rear climate controls
<input checked="" type="checkbox"/>	<input type="checkbox"/>	Cargo area soft liner – Color-keyed, includes storage bag
<input checked="" type="checkbox"/>	<input checked="" type="checkbox"/>	Cargo shade (not available with optional 3rd-row seat)
<input type="checkbox"/>	<input checked="" type="checkbox"/>	Dual-zone electronic automatic temperature controls
<input checked="" type="checkbox"/>	<input checked="" type="checkbox"/>	Electrochromic auto-dimming rearview mirror
<input checked="" type="checkbox"/>	<input type="checkbox"/>	Floor mats – Heavy-duty rubber with deep grooves (front and rear)
<input type="checkbox"/>	<input checked="" type="checkbox"/>	Floor mats – Color-keyed carpeted (front and rear)
<input checked="" type="checkbox"/>	<input checked="" type="checkbox"/>	High-series center floor console – Includes storage bin, 2 front and 2 rear cupholders, front/rear power points, coin holder, tissue/map holder, pen holder and rear heat/AC vents
<input type="checkbox"/>	<input checked="" type="checkbox"/>	Homelink® universal transmitter
<input checked="" type="checkbox"/>	<input checked="" type="checkbox"/>	Leather-wrapped steering wheel (color-keyed on Eddie Bauer and Limited)
<input type="checkbox"/>	<input checked="" type="checkbox"/>	Message center
<input checked="" type="checkbox"/>	<input checked="" type="checkbox"/>	Overhead console – Includes 2 map/dome lights, ticket clip, sunglasses holder, and garage door opener holder (not available with auxiliary rear climate controls or moonroof)
<input type="checkbox"/>	<input checked="" type="checkbox"/>	Power adjustable accelerator and brake pedals – Includes memory feature on Eddie Bauer and Limited models
<input type="checkbox"/>	<input type="checkbox"/>	Rear-seat DVD entertainment system – Includes DVD player, ceiling-mounted pull-down 7" color LCD screen, remote control, video jacks for games and wireless headphone sets**
<input type="checkbox"/>	<input checked="" type="checkbox"/>	Steering wheel-mounted audio and climate controls

NBX		
Eddie Bauer Limited		
Exterior		
<input checked="" type="checkbox"/>	<input type="checkbox"/>	Bodyside cladding – Lower, molded-in black with two-tone black bumpers
<input type="checkbox"/>	<input checked="" type="checkbox"/>	Bodyside cladding – Lower, painted Arizona Beige accent color
<input type="checkbox"/>	<input checked="" type="checkbox"/>	Bodyside cladding – Lower, painted monochromatic body color
<input checked="" type="checkbox"/>	<input type="checkbox"/>	Crossbars for roof rails
<input checked="" type="checkbox"/>	<input checked="" type="checkbox"/>	Fog lamps
<input checked="" type="checkbox"/>	<input type="checkbox"/>	Grille – Black
<input type="checkbox"/>	<input checked="" type="checkbox"/>	Grille – Satin-nickel
<input type="checkbox"/>	<input checked="" type="checkbox"/>	Grille – Chrome
<input checked="" type="checkbox"/>	<input checked="" type="checkbox"/>	Keyless entry keypad – Driver's door-mounted
<input type="checkbox"/>	<input type="checkbox"/>	Power moonroof
<input type="checkbox"/>	<input type="checkbox"/>	Reverse sensing system
<input type="checkbox"/>	<input checked="" type="checkbox"/>	Running boards – Color-keyed
<input checked="" type="checkbox"/>	<input type="checkbox"/>	Side step bars – Black
<input checked="" type="checkbox"/>	<input type="checkbox"/>	Tow hooks – Front
<input type="checkbox"/>	<input type="checkbox"/>	Trailer tow prep package – Class III/IV (included with AdvanceTrac™)
<input checked="" type="checkbox"/>	<input checked="" type="checkbox"/>	Wheel-lip moldings – Molded-in black on NBX, painted Arizona Beige on Eddie Bauer, painted monochromatic body color on Limited
<input checked="" type="checkbox"/>	<input type="checkbox"/>	Yakima® LoadWarrior roof rack with extension and Explorer logo on front air dam

*Requires V8 engine and power adjustable pedals. Includes 3.73 non-limited slip rear axle.
**Requires moonroof and Safety Canopy™ System in combination or auxiliary climate controls.

Group Packages

XLS Sport Group

- 16" painted cast aluminum wheels
- P235/70R16 all-season OWL tires
- Medium Dark Platinum wheel-lip moldings
- High-series floor console
- Black side step bars

XLT Sport Group

- 17" machined aluminum wheels
- P245/65R17 all-terrain OWL tires
- Platinum gloss bodyside cladding, wheel-lip moldings, side step bars and two-tone front and rear fascias

NBX Appearance Package

- 17" machined aluminum wheels
- P245/65R17 all-terrain OWL tires
- Two-tone black bumpers
- Black bodyside cladding, wheel-lip moldings and side step bars
- Yakima® LoadWarrior roof rack with extension and Explorer logo
- Unique "Impulse" cloth trim
- Rubber floor mats with Explorer logo
- Cargo area soft liner with storage bag

Off-Road Package¹ (available on 4x4 models only)

- Skid plates for the fuel tank and transfer case
- Specially tuned shocks/suspension
- Front tow hooks

¹Not available with Zinc Yellow exterior paint.

	4.0L SOHC V6	4.6L SOHC V8
Horsepower (hp @ rpm)	210 @ 5100	239 @ 4750
Torque (lb.-ft. @ rpm)	254 @ 3700	282 @ 4000

Trailer Towing Applications

Axle Ratio	Maximum Loaded Trailer Weight (lbs.)	
	4.0L V6	4.6L V8
3.55	3280	4x2 Class II
	3400	4x4 Class II; AWD Class II
3.73 ¹	5560	4x2 Class III/IV
	5400	4x4 Class III/IV
3.73LS	5800	4x2 Class III/IV
	5380	4x4 Class III/IV; AWD Class III/IV
3.55	3280	4x2 Class II
	3420	4x4 Class II; AWD Class II
3.73LS	7160 ²	4x2 Class III/IV
	7000 ²	4x4 Class III/IV; AWD Class III/IV

Maximum weights shown are for properly equipped vehicles with required equipment and a 150-lb. driver. Weight of additional options, equipment, passengers and cargo must be deducted from this weight. For additional information, see your Ford Dealer.

¹Included with AdvanceTrac™ Stability Control System.

²Deduct 500 lbs. with 3rd-row seat with auxiliary climate controls.

Comparisons based on publicly available information and Ford certification data at time of printing. Some features discussed may be optional. Vehicles shown may contain optional equipment. Features shown may be offered only in combination with other options or subject to additional ordering requirements or limitations. Following publication of the catalog, certain changes in standard equipment, options and the like, or product delays, may have occurred which would not be included in these pages. Your Ford Dealer is the best source for up-to-date information. Ford Division reserves the right to change product specifications at any time without incurring obligations.

PAINT AND TRIM COLORS

INTERIOR/EXTERIOR COMBINATIONS

	Medium Parchment
	Graphite
	Midnight Grey
■	XLS/XLS Sport
■	Oxford White
■	Harvest Gold Metallic
■	Red Fire Metallic*
■	Aspen Green Metallic
■	True Blue Metallic
■	Silver Birch Metallic
■	Mineral Grey Metallic
■	Black
■	XLT/XLT Sport
■	Oxford White
■	Harvest Gold Metallic (XLT)
■	Red Fire Metallic*
■	Estate Green Metallic (XLT)
■	Aspen Green Metallic (XLT)
■	Medium Wedgewood Blue Metallic (XLT)
■	True Blue Metallic (XLT Sport)
■	Silver Birch Metallic
■	Mineral Grey Metallic (XLT)
■	Black
	NBX
■	Zinc Yellow*
■	Red Fire Metallic*
■	Silver Birch Metallic
■	Mineral Grey Metallic
■	Eddie Bauer
■	Oxford White
■	Red Fire Metallic*
■	Estate Green Metallic
■	Aspen Green Metallic
■	Medium Wedgewood Blue Metallic
■	True Blue Metallic
■	Black
■	Limited (Monochromatic)
■	Ceramic White Tri-Coat Metallic*
■	Silver Birch Metallic
■	Mineral Grey Metallic
■	Black

*New for 2003.



Oxford White



Ceramic White Tri-Coat Metallic



Harvest Gold Metallic



Zinc Yellow



Red Fire Metallic



Estate Green Metallic



Aspen Green Metallic



Medium Wedgewood Blue Metallic



True Blue Metallic



Silver Birch Metallic



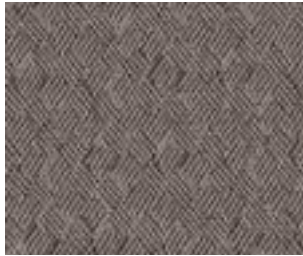
Mineral Grey Metallic



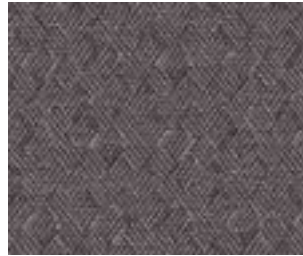
Black

Ford uses clearcoat paint for beauty and protection. Colors shown are representative only. See your dealer for actual paint/trim options.

FABRICS



Medium Parchment Cloth
Standard on XLS



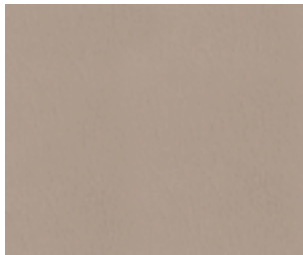
Graphite Cloth
Standard on XLS



Medium Parchment Cloth
Standard on XLT



Graphite Cloth
Standard on XLT



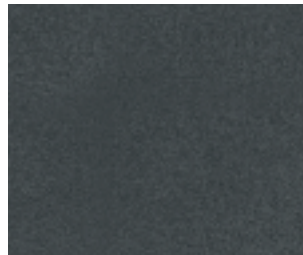
Medium Parchment Leather
Optional on XLT
Standard on Eddie Bauer (two-tone) and Limited



Graphite Leather
Optional on XLT



Midnight Grey Cloth
Standard on NBX



Midnight Grey Leather
Standard on Limited

WHEELS



16" Full-Face Steel Wheel
Standard on XLS



16" Painted Cast Aluminum Wheel
Standard on XLS Sport and XLT



16" Painted Cast Aluminum Wheel
Standard on XLT with 3rd-row seat or Trailer Tow Package



17" Machined Aluminum Wheel
Standard on XLT Sport and NBX



17" Satin-Nickel Wheel
Standard on Eddie Bauer



17" Chromed Cast Aluminum Wheel
Standard on Limited