

2008 HYUNDAI **ENTOURAGE**

Challenge it.



Explore it.

Test it.

Experience it.

Consider it.

Look at it.

Compare it.

Study it.

Discover it.





Think About It

THE TRUTH IS, finding a car that's right for you isn't that easy. You've got cars that over promise and under deliver. Cars that assume you've won the lottery and desperately want to part with the proceeds. And value-priced cars that, unfortunately, drive that way.

Fortunately, there is one company that understands and embraces the concept of what people really want in a car. That company is Hyundai.

We make smart cars for smart people. Cars that routinely get 5-star crash test ratings. Cars where the number of safety features takes precedence over the number of cupholders. And cars that put quality exactly where it belongs—first and foremost.



The Hyundai Entourage is the Winner of Strategic Vision's Total Quality Award™ for Best Minivan Ownership Experience.¹

We also believe in a warranty that lasts twice as long as the average car loan. Not to mention the average car warranty.

We steadfastly adhere to the proposition that premium amenities are not to be reserved exclusively for the wealthy. That beautiful design shouldn't necessitate a second mortgage. And that stimulating performance and handling needn't come from engineers with names like Hans and Giuseppe.

In other words, we believe in cars that don't insult your intelligence, but rather, respect it.

Like the safe, versatile Entourage. With a 5-star crash test rating, seating for seven, six airbags and features galore, it's no wonder automotive experts everywhere praise the Entourage every chance they get. For example, the 2007 Entourage was named one of the 2007 "Best Cars for Families" by *Parents* magazine and AAA.

Now that we've whetted your appetite, feel free to turn the page and get better acquainted.

¹The 2007 Hyundai Entourage was a winner in the Strategic Vision's 2007 Total Quality Award™ as a 3-way tie for Best Minivan Ownership Experience. Strategic Vision's 2007 New Vehicle Experience Study™ surveyed 27,780 Oct.-Nov. new vehicle buyers after the first 90 days of ownership.

— *Universal Automotive Truths* —

WITH AGE COMES MINIVAN. MIGHT AS WELL BE THE SAFEST ONE EVER TESTED.

WE ALL GET OLDER, and when we do, the responsibilities multiply. Which is reason enough to consider the Hyundai Entourage, especially when you take into account that it's the highest-rated minivan ever tested by the Insurance Institute for Highway Safety.¹ Must be the Electronic Stability Control, six airbags, 4-wheel disc brakes with ABS and active front head restraints. Feeling safe. Now that's something you can appreciate at any age.

¹Based on Insurance Institute for Highway Safety 40 mph frontal crash test, 31 mph side-impact test, and 20 mph rear-impact test.



LIMITED IN SONORA GOLD



LIMITED IN COSMIC WHITE





LIMITED IN BEIGE LEATHER





LIMITED IN GRAY LEATHER



REST ASSURED, IN OUR QUEST FOR CONVENIENCE, we didn't forget about comfort. So the Entourage offers an extra-long wheelbase for an expansive cabin that gives your little MVPs plenty of room to stretch out after the game, intuitive ergonomics that put everything in just the right place, and exceptionally comfortable heated front seats. We also offer some other pleasant surprises such as a power sunroof, multi-function trip computer and leather-trimmed interior. Because contented parents are as important as contented kids.



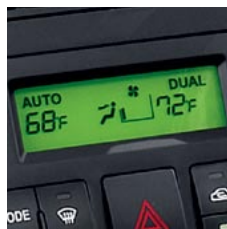
REAR DVD ENTERTAINMENT SYSTEM

“Are we there yet?” is a thing of the past, thanks to this advanced DVD system, which features a remote control for the ultimate in convenience and wireless headphones to help keep things quiet. With a large 8-inch liquid-crystal display that folds into the roof when not in use, images are big and bold with bright, saturated colors. So go ahead and bring your kids’ favorite movies along for the ride. In most cases, you can be over the river, through the woods and all the way to grandma’s house just around the time the movie is over.



CONVERSATION MIRROR

Your kids may think you actually do have eyes in the back of your head. This cleverly designed convex mirror folds down from the overhead console and allows the driver to view all rear passengers at a quick glance.



AUTOMATIC TEMPERATURE CONTROL

Some like it hot. Some like it cold. And don’t forget the rear seat, too. So keep everyone feeling just right thanks to the Entourage’s dual front automatic temperature control and three air-conditioned zones.



BLUETOOTH® WIRELESS TECHNOLOGY

Located in the upper console, this hands-free phone system features a built-in microphone and speaker for perfect clarity, and several unique cell phones can be recognized.¹



IN-DASH 6-DISC CD CHANGER

Choosing music to make everyone happy might not be easy, but at least switching CDs is. This CD changer can select from 6 discs with the push of a button. It even has the versatility to play CDs with MP3 music files.



INTEGRATED MEMORY SYSTEM

The Entourage keeps you in mind. With just the touch of a button, your favorite preset power-seat position and settings for foot pedals and side mirrors are instantly custom-adjusted. Isn’t it nice to be remembered?



HEATED FRONT SEATS

Heated front seats make taking the kids to school on a chilly morning a pleasure. Plus, they’re power adjustable and feature variable temperature settings to keep you in maximum comfort from start to finish.

¹Later availability. Replaces conversation mirror. The Bluetooth® word mark and logos are registered trademarks owned by Bluetooth SIG, Inc., and any use of such marks by Hyundai is under license. Other trademarks and trade names are those of their respective owners.



LIMITED IN GRAY LEATHER



LIMITED IN GRAY LEATHER



ROOM FOR YOUR LIFE

The Entourage's roomy 172.3 cubic feet of interior space easily fits seven passengers, or plenty of cargo, and pretty much anything in between. Hyundai Hideaway™ 3rd-row seats provide a multitude of seating and storage configurations. They quickly fold flush into the floor or can split 60/40, so fitting everything in that life brings your way is never a problem.





HOW IT WORKS

An advanced, electronically-controlled system reads data from sensors throughout the vehicle. Input is relayed to a sophisticated computer, and is processed using proven algorithms, which enable ESC to react instantaneously to input from you and the road. According to the IIHS, if every carmaker equipped their cars with this technology, as many as 10,000 fatal crashes could be avoided in a year.



*Electronic Stability Control (ESC) cannot control your vehicle's stability under all driving situations. ESC is not a substitute for safe driving practices. No system, no matter how advanced, can overcome physics or correct poor driving. The driver is always responsible for controlling the vehicle and must use caution to avoid loss of control in all driving conditions. Speed, road conditions and driver steering input will affect whether ESC can help prevent loss of control. See Owner's Manual for details.



Active Safety

SAFELY AVOID THE UNEXPECTED THINGS THAT LIFE (OR THE NEIGHBOR'S KID) THROWS YOUR WAY.

COURTESY OF STANDARD ESC. You might only have a fraction of a second to respond to an obstacle in front of you, and when you do, you want your car to respond dynamically and intelligently to your steering and braking input. Basically, you want Electronic Stability Control (ESC)! This advanced system monitors wheel speed, steering angle, yaw and lateral g-forces while the vehicle is moving. When it senses a skid is imminent, it responds immediately, applying the appropriate amount of braking to individual wheels and adjusting throttle input to help keep you on your intended path. It's proven so effective that the NHTSA estimates up to 35% of single-vehicle passenger car accidents could be avoided if every automobile were equipped with ESC.





LIMITED IN CRANBERRY RED



TRACTION CONTROL SYSTEM

Wet pavement may have met its match. The advanced Traction Control System senses unexpected wheelspin while accelerating, and automatically applies the appropriate combination of brakes and throttle to route power to the tire with the most traction. So while you may not be able to control road conditions, TCS helps you maintain control of your vehicle.¹

IF YOU CREATED YOUR OWN CAR COMPANY, you wouldn't make safety an option. Neither did we. So before you load the Entourage full of passengers, we've already filled it with cutting-edge active safety features that work dynamically with input from you and the road to help prevent an accident. Which is why the Entourage is an ideal choice to help protect you, your passengers and your peace of mind. Just like you'd expect from your own car company.

¹The Traction Control System (TCS) is meant to enhance conscientious driving habits and is not a substitute for safe driving practices.





Active Safety



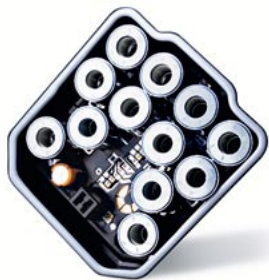
ANTI-LOCK BRAKING SYSTEM

Unfortunately, wet roads and sudden stops are still a part of driving. That's where our Anti-lock Braking System enters the picture. ABS prevents wheel lock-up and helps maintain steering control, even during emergency braking situations, by rapidly pulsing the brakes. So you can control steering to successfully maneuver around objects ahead of you.



ELECTRONIC BRAKE-FORCE DISTRIBUTION

You never know where you'll be when you need to stop quickly—from a dirt road to a major thoroughfare. So EBD uses a network of sensors to provide the appropriate braking pressure at each wheel, based on load dynamics, road condition and speed, to help deliver maximum braking performance.



BRAKE ASSIST

Statistics show that drivers frequently don't brake forcefully enough in an emergency situation. Brake Assist actually senses when you are in a panic stop and immediately applies the maximum braking pressure to help you stop in a shorter distance. Because sometimes, a few extra feet can make all the difference.





Passive Safety

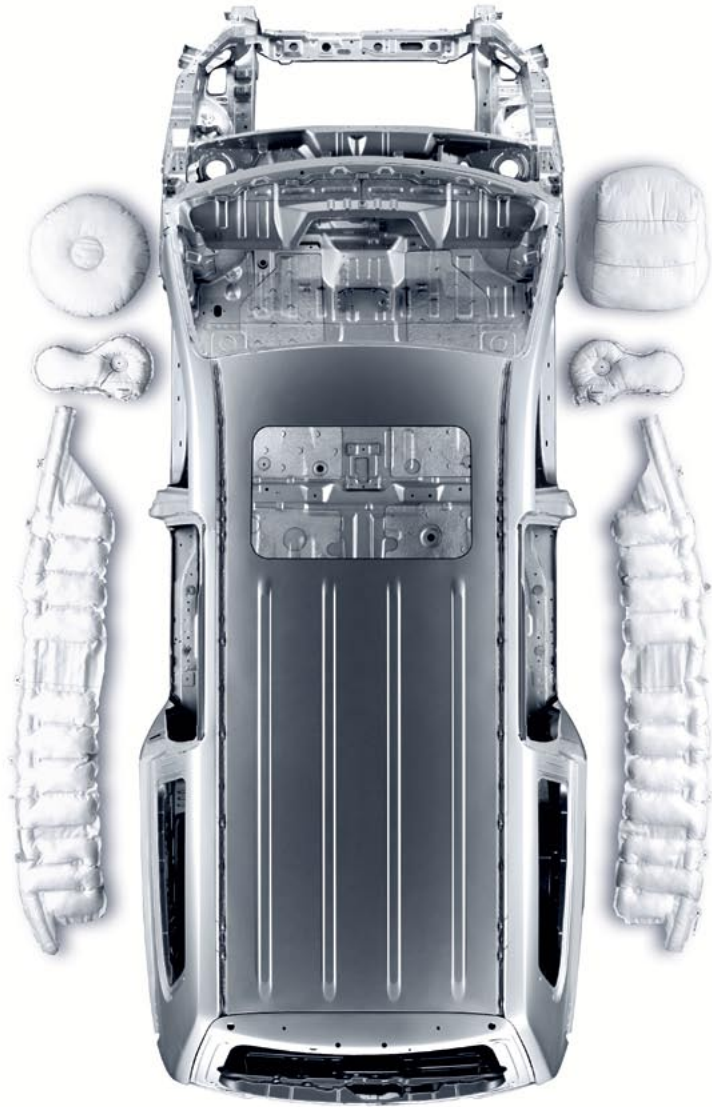


NHTSA 5-STAR CRASH RATING

Entourage has received the U.S. government's highest crash rating of 5 stars for both front- and side-impact collisions.¹

ON TOP OF OUR ACTIVE SAFETY FEATURES, the Entourage is equipped with a host of standard passive safety features as well. Because we take the task of keeping you and your passengers safe just as seriously as you do. From an advanced airbag system to rear child-seat anchors, our commitment to safety can be seen throughout every automobile we build. So, should an accident occur, you can rest assured that you're surrounded by state-of-the-art safety engineering and numerous features that have all been proven to help minimize the effects of it.

¹Government star ratings are part of the National Highway Traffic Safety Administration's (NHTSA's) New Car Assessment Program (www.safercar.gov). 2007 model tested with standard side-impact airbags (SABs).





Passive Safety

SIX AIRBAGS STANDARD

When it comes to airbags, there truly is safety in numbers. So with this bit of wisdom, and a great deal of common sense, we gave the Entourage six airbags. Advanced dual front airbags with an Occupant Classification System, front seat-mounted side-impact airbags and roof-mounted side-curtain airbags.¹ They play a big part in why the Entourage has scored higher than any minivan ever tested by the IIHS.



LIMITED IN GRAY LEATHER



¹The Supplemental Restraint System (SRS) is designed to work with the 3-point seatbelt system. The SRS deploys in certain frontal and/or side-impact conditions where significant injury is likely. The SRS is not a substitute for seatbelts, which should be worn at all times. Children under the age of 13 should be restrained securely in the rear seat. NEVER place a rear-facing child seat in the front seat of a vehicle that has a passenger-side airbag.



Passive Safety



TIRE PRESSURE MONITORING SYSTEM

Each wheel is equipped with an air-pressure sensor located at the valve stem. In the event that any tire reaches a specified low air pressure, a warning light will alert you as to which tire is low. TPMS helps with long-term automotive maintenance and is a useful safety feature that can help prevent dangerous situations caused by driving on a deflated tire!



SEATBELT PRETENSIONERS

These tighten safety belts in certain accidents to reduce the front occupants' forward movement. Then, force limiters release slack, limiting the load across the body to help minimize injury.



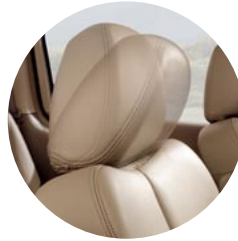
ENERGY-ABSORBING STEERING COLUMN

An NHTSA report confirms that an energy-absorbing steering column, which collapses away from the driver in the event of a frontal collision, is a vital safety feature.



CHILD-SEAT ANCHORS

The Entourage is outfitted with the LATCH child-seat-attachment system. This feature is integrated into the 2nd- and 3rd-row outboard seats to make proper installation of child seats easier.²



ACTIVE FRONT HEAD RESTRAINTS

Whiplash is one of the most common injuries in a rear collision. With this feature, the head restraint moves forward and up, which reduces the likelihood of neck injury.



STRUCTURAL INTEGRITY

You wouldn't build a house on a shaky foundation. Same goes for cars. We built the Entourage with a reinforced unibody construction of high-tensile steel to effectively absorb collision energy. We also engineered it with rear crumple zones, bodyside reinforcements and hood-buckling creases to protect you in an impact from any direction.



¹TPMS is not a substitute for proper maintenance. See Owner's Manual for details. ²Child Safety Restraint System designs vary. Always consult instructions provided by manufacturer before installing.

Rewriting the Book

NOWHERE IS IT WRITTEN THAT A MINIVAN HAS TO BE UGLY.

AT LEAST NOT IN ANY BOOK WE'VE EVER READ. All the better for you, because we designed our minivan with clean, handsome lines, then gave it attractive chrome accents, integrated fog lights and distinctive alloy wheels. So you can feel free to take it to the supermarket, the school, the golf course, even the beach – without being worried if your friends happen to spot you standing next to it.



LIMITED IN GALAXY BLACK AND STARDUST SILVER





LIMITED IN STARDUST SILVER

Confident Performance

IT'S A SENSIBLE CHOICE, NOT A BORING ONE.

JUST BECAUSE YOU NEED A MINIVAN, doesn't mean you've suddenly lost your love of driving, and nobody enjoys wrestling with the controls of a vehicle that handles like a rhinoceros with a missing leg. That's why we designed the Entourage to accelerate and handle more like a car and less like a van (or a rhino). We did this by incorporating a powerful V6 engine, a fully independent suspension and a smooth-shifting automatic transmission. So go ahead and take it for a spin, you may find yourself enjoying the drive, whether you're hauling the kids or not.



AUTOMATIC TRANSMISSION

A silky-smooth 5-speed automatic transmission delivers smooth shifts and quiet cruising that's a pleasure to experience. Plus, SHIFTRONIC® gives you control over gear selection when you want it.



V6 POWER

With more horsepower than any of its domestic competitors, the Entourage's 3.8-liter V6 engine delivers 250 horsepower and 253 lb.-ft. of torque for acceleration you can count on.



4-WHEEL INDEPENDENT SUSPENSION

Front MacPherson struts and a multi-link rear suspension with front and rear stabilizer bars give you a smooth, controlled ride while helping to minimize body roll.

IT'S DIFFICULT TO PREDICT THE FUTURE. UNLESS YOU HAPPEN TO BE DESIGNING IT.

AT FACTORIES, DESIGN CENTERS AND R&D FACILITIES AROUND THE WORLD, Hyundai is hard at work developing the technologies that will carry you down the road more safely, more reliably, more efficiently and more stylishly than ever before. From next-generation car concepts that incorporate the most advanced safety technologies while pushing the boundaries of design, to groundbreaking fuel-cell technology that lowers emissions and increases fuel economy, we never stop advancing the automotive art.





ISO/TS 16949=A BETTER-MADE CAR

Our manufacturing plant in Alabama represents the height of automotive excellence. It's certified to the International Automotive Task Force's highest automotive operating standard in the world, the ISO/TS 16949. And it's also first in the U.S. to achieve this honor. The reason? Two years of improving quality processes and streamlining supply chains. Because quality vehicles start with quality manufacturing.

IT TAKES A WORLD OF PEOPLE TO MAKE A HYUNDAI. From our R&D Center in South Korea, where we conduct predesign studies, prototyping, full-scale aerodynamics analysis, crash testing and test driving. To Alabama and our \$1.1 billion state-of-the-art manufacturing plant. To Michigan and our engineering center. To our Southern California design facility, where we utilize the world's most advanced visualization, graphics and clay-modeling technologies. To our environmental technology research center in Seoul. Together, these facilities ensure that every vehicle we build is at the forefront of automotive technology.





WE'RE VERY HANDS ON

We hand check nuts, bolts, cables, wiring and power components before any Hyundai leaves the plant. Then every vehicle is road tested to eliminate squeaks and rattles that can't be detected on the factory floor.



PERFECTION IS OUR OBSESSION

For example, this door hinge used to look a little different. But our engineers noticed that the old design was adding a minute amount of wind noise to the vehicle. So they redesigned it. Now it adds none at all.



MEET OUR QUALITY INSPECTOR

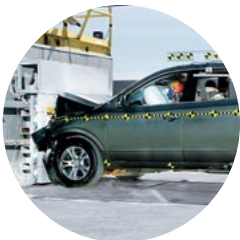
An army of 250 robots, equipped with optical sensors far more sensitive than the human eye, inspects every vehicle for quality welds and proper fit. This ensures tight seams and seals, as well as perfect alignment.



WE TREAT OUR BODIES LIKE TEMPLES

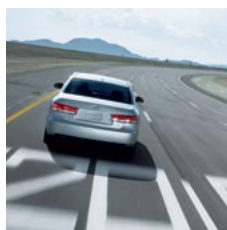
Prior to painting, the body of each Hyundai is electrically charged, then immersed in a primer bath with an opposite charge. This ensures even hidden surfaces are completely coated for incredible corrosion resistance.





YOU CAN NEVER BE TOO SAFE

Our vehicles' excellent safety ratings are the result of thousands of hours of simulations in state-of-the-art safety testing facilities. Is destroying millions of dollars worth of automobiles worth it? Absolutely.



PROVEN BEFORE IT'S DRIVEN

At our California Proving Grounds, every new design is tested in real-world situations. This includes a 6.4-mile track to evaluate engine and road noise, and a 3.3-mile road course that simulates America's highways.

00002.3

THE MYSTERIOUS 2.3 MILES

Every new Hyundai that comes out of our Alabama plant has 2.3 miles on the odometer. That's because each one is road tested on our test track to ensure every vehicle is working perfectly.



TESTED TO THE EXTREMES

From the scorching heat of Death Valley, Calif, to the frozen tundra of central Canada, our cars are tested in the most extreme conditions. This ensures their performance never wavers, no matter what life throws your way.



“Through its Hope On Wheels program, Hyundai is improving the quality of life for children with cancer.”

—David G. Poplack, MD, Director, Texas Children’s Cancer Center



HOPE ON WHEELS

Every time you buy a Hyundai, you’re helping someone in desperate need. That’s because a portion of the proceeds from every vehicle we sell is donated to help fight pediatric cancer, a disease that is diagnosed in more than 12,000 children in the U.S. every year, and is the leading disease-related cause of death in children. Since 1998, Hyundai and its dealers have donated over \$9 million to more than 70 different pediatric cancer research programs. We not only provide funding but donate vehicles as well, and partner with local community groups to help them raise awareness.

For more information, visit hopeonwheels.com.



Hyundai Hope On Wheels™
Helping kids fight cancer



America's Best Warranty

A FIVE-YEAR WARRANTY SAYS A LOT ABOUT THE CAR. A TEN-YEAR WARRANTY SAYS A LOT ABOUT THE CAR COMPANY.

IT SAYS THAT WE STAND BEHIND OUR VEHICLES with a warranty matched by no other automaker in the country.¹ It says your new Hyundai's powertrain may be covered until the year 2018. (Just think about that for a minute.) But above all, it says that we build a vehicle that you can rely on. That as a company, we're committed to your satisfaction, long after you leave the dealership and your car is bought and paid for. And that's as refreshing now as it will be in a decade.



ENTOURAGE

¹See dealer for LIMITED WARRANTY details.

10-YEAR/100,000-MILE

POWERTRAIN PROTECTION

5-YEAR/60,000-MILE

NEW VEHICLE LIMITED WARRANTY

7-YEAR/UNLIMITED MILES

ANTI-PERFORATION WARRANTY

5-YEAR/UNLIMITED MILES

24-HOUR ROADSIDE ASSISTANCE



AZERA

SONATA

ELANTRA

ACCENT

TIBURON

TUCSON

SANTA FE

VERACRUZ



GLS

STANDARD FEATURES INCLUDE:

- 3.8-liter, 24-valve, DOHC V6 engine with CVVT
- 5-speed automatic transmission with SHIFTRONIC®
- Electronic Stability Control
- Traction Control System
- Anti-lock Braking System, Electronic Brake-force Distribution, Brake Assist
- Advanced dual front airbags with Occupant Classification System, front side-impact airbags, side-curtain airbags
- Active front head restraints
- LATCH child-seat-attachment system
- Tire Pressure Monitoring System
- 16-inch steel wheels with full wheel covers
- Dual power side mirrors
- Dual manual-sliding side doors with power windows
- Air conditioning with tri-zone ventilation and 2nd-row controls
- AM/FM/CD audio system with six speakers
- Premium cloth seats
- Multi-adjustable front and 2nd-row captain's chairs with armrests
- Hyundai Hideaway™ 3rd-row seats
- Tilt steering wheel
- Cruise control
- Remote keyless entry system
- Conversation mirror
- Windshield wiper de-icer

OPTIONAL GLS PACKAGES:

- Popular Equipment Package: Dual power-sliding side doors, backup warning system, power rear quarter glass, power driver seat, steering-wheel-mounted audio controls
- Premium Package: Popular Equipment Package, 17-inch alloy wheels, Infinity® Logic 7® Surround Sound audio system, rear DVD entertainment system, dual front automatic temperature control, heated side mirrors, automatic headlights, front fog lights, leather-wrapped steering wheel and shift knob, multi-function trip computer, chrome exterior and interior door handles, woodgrain or metalgrain interior accents, solar control glass, dual front illuminated vanity mirrors, chrome-accented rear garnish



LIMITED

INCLUDES ALL STANDARD GLS FEATURES PLUS:

- Leather seating surfaces
- 660-watt Infinity Logic 7 Surround Sound system
- In-dash 6-disc CD/MP3 changer
- Dual front automatic temperature control
- Dual power-sliding side doors
- Power tailgate
- Backup warning system
- Automatic headlights
- Front fog lights
- Dual heated power side mirrors
- 17-inch, 7-spoke alloy wheels with P235/60TR tires
- 8-way power driver seat with lumbar support
- Heated front seats
- Steering-wheel-mounted audio controls
- Solar control glass
- Power rear quarter glass
- Multi-function trip computer
- Chrome exterior and interior door handles
- Chrome-accented rear garnish
- Woodgrain trim in beige interior
- Metalgrain trim in gray interior
- Dual front illuminated vanity mirrors
- "Limited" badging

OPTIONAL LIMITED PACKAGE:

- Ultimate Package: Rear DVD entertainment system, power tilt-and-slide sunroof, power front passenger seat, power-adjustable foot pedals, integrated memory system, electrochromic auto-dimming rearview mirror, HomeLink®

WHEEL CHOICES



16-INCH GLS WHEEL COVER

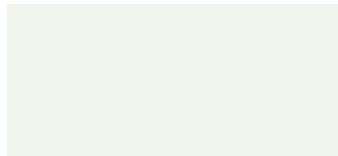


17-INCH LIMITED ALLOY WHEEL

EXTERIOR COLOR CHOICES



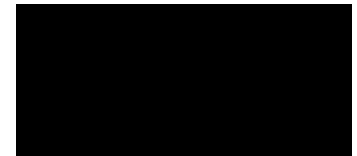
SOUTH PACIFIC BLUE
BEIGE OR GRAY INTERIOR



COSMIC WHITE
BEIGE OR GRAY INTERIOR



CRANBERRY RED
BEIGE OR GRAY INTERIOR



GALAXY BLACK
BEIGE OR GRAY INTERIOR



STARDUST SILVER
GRAY INTERIOR



SONORA GOLD
BEIGE INTERIOR



GREEN MEADOW GRAY
GRAY INTERIOR

INTERIOR COLOR CHOICES



GLS PREMIUM BEIGE CLOTH



GLS PREMIUM GRAY CLOTH



LIMITED BEIGE LEATHER



LIMITED GRAY LEATHER

SAFETY FEATURES	GLS	LIMITED
Electronic Stability Control (ESC)	S	S
Traction Control System (TCS)	S	S
4-wheel Anti-lock Braking System (ABS), Electronic Brake-force Distribution (EBD), Brake Assist	S	S
Advanced Driver and Front Passenger Airbags (SRS) with Occupant Classification System (OCS)	S	S
Driver and Front Passenger Side-impact Airbags (SRS), seat-mounted	S	S
Side-curtain Airbags (SRS), roof-mounted; all 3 rows	S	S
Active Front Head Restraints	S	S
Front Seatbelts with Pretensioners and Force Limiters	S	S
Adjustable Front Seatbelt Anchors	S	S
LATCH Child-seat-attachment System: (2) 2nd-row, (2) 3rd-row	S	S
Energy-absorbing Steering Column	S	S
Tire Pressure Monitoring System (TPMS)	S	S

EXTERIOR FEATURES

Power Tilt-and-slide Sunroof with One-touch Open and Sliding Sunshade	–	U
Dual Power-sliding Side Doors	PE	S
Backup Warning System	PE	S
Dual Power Side Mirrors, manual-folding	S	S
Heated Side Mirrors	P	S
Automatic Headlights	P	S
Front Fog Lights	P	S
Power Tailgate	–	S
Solar Control Glass	P	S
Remote Keyless Entry System with Alarm and Panic Alert	S	S
Variable Intermittent Windshield Wipers/Intermittent Rear Window Wiper	S	S
Chrome Door Handles and Rear Garnish	P	S
Roof Side Rails	S	S

INTERIOR FEATURES

Air-conditioning System with Tri-zone Ventilation and 2nd-row Manual Controls	S	S
Dual Front Automatic Temperature Control	P	S
Leather Seating Surfaces	–	S
Leather-wrapped Steering Wheel and Shift Knob	P	S
8-way Adjustable Driver Seat with Lumbar Support/4-way Adjustable Passenger Seat	S	S
Power Driver Seat/Power Front Passenger Seat	PE/–	S/U
Heated Front Seats	–	S
172-watt AM/FM/CD Audio System with 6 Speakers	S	–
660-watt Infinity Logic 7 Surround Sound, In-dash 6-disc CD/MP3 Changer, Digital Amplifier, 13 Speakers	P	S
Rear DVD Entertainment System: 8-inch roof-mounted screen, 2 wireless headphones, remote control, aux inputs	P	U
Bluetooth® Hands-free Phone System ¹	O	O
Steering-wheel-mounted Audio Controls	PE	S
Multi-function Trip Computer (fuel economy, distance to empty, trip timer, compass, outside temperature)	P	S
Power Windows with Driver's Auto-down	S	S
Power Rear Quarter Glass	PE	S
Electrochromic Auto-dimming Rearview Mirror	–	U
HomeLink Integrated Transceiver	–	U
Power-adjustable Foot Pedals	–	U
Cruise Control, steering-wheel-mounted	S	S
Integrated Memory System (power driver seat, foot pedals, side mirrors with tilt-down in reverse)	–	U
Overhead Console with Conversation Mirror and Maplights	S	S
Rear Reading Lights	S	S
Front Center Folding Tray	S	S
13 Cupholders/Bottle Holders	S	S
Hyundai Hideaway 3rd-row 60/40 Split Fold-flat Seats	S	S
Dual Front Illuminated Vanity Mirrors with Visor Extensions	PE	S
Carpeted Floor Mats or All Weather Floor Mats	O	O

S = STANDARD O = OPTIONAL FEATURE – = NOT AVAILABLE PE = POPULAR EQUIPMENT PACKAGE P = PREMIUM PACKAGE U = ULTIMATE PACKAGE

ENGINE	GLS	LIMITED
3.8-liter, 24-valve, DOHC V6	S	S
Continuously Variable Valve Timing	S	S
Aluminum Block and Head	S	S
Variable Intake System	S	S
Horsepower @ rpm	250 @ 6000	250 @ 6000
Torque (lb.-ft. @ rpm)	253 @ 3500	253 @ 3500
Compression Ratio	10.4:1	10.4:1
Multi-port Programmed Fuel Injection	S	S
Electronic/Distributorless Ignition System	S	S

DRIVETRAIN/TRANSMISSION

Drive Configuration: Front-wheel Drive	S	S
5-speed Electronically Controlled Automatic Transmission with SHIFTRONIC	S	S
Final Drive Ratio	3.333	3.333

BODY/SUSPENSION/CHASSIS

Body Type: Seven-passenger Minivan	S	S
Unibody Construction	S	S
4-wheel Independent Front Suspension: MacPherson strut front; multi-link rear	S	S
Front and Rear Stabilizer Bars	S	S
4-wheel Disc Brakes, front ventilated	S	S
Power Rack-and-pinion Steering, engine-RPM-sensing	S	S
Turning Diameter (ft.), curb-to-curb	39.6	39.6
16-inch Steel Wheels with Full Wheel Covers and P225/70TR Tires	S	-
17-inch, 7-spoke Alloy Wheels with P235/60TR Tires	P	S

EXTERIOR DIMENSIONS

Wheelbase (in.)	118.9	118.9
Length (in.)	202.0	202.0
Width (in.), excludes mirrors	78.1	78.1
Height (in.)	71.5	71.5
Track (in.), front/rear	66.3/66.3	66.3/66.3
Curb Weight (lbs.) ²	4400-4659	4400-4659
Minimum Ground Clearance (in.)	6.58	6.58
Towing Capacity (lbs.), with trailer brakes/without trailer brakes	3500/1000	3500/1000

INTERIOR DIMENSIONS

Head Room (in.), front/2nd/3rd-row	41.0/39.8/38.3	41.0/39.8/38.3
Leg Room (in.), front/2nd/3rd-row	41.7/40.9/34.0	41.7/40.9/34.0
Shoulder Room (in.), front/2nd/3rd-row	63.2/65.4/60.5	63.2/65.4/60.5
Hip Room (in.), front/2nd/3rd-row	59.2/65.9/50.1	59.2/65.9/50.1
Cargo Volume (cu. ft.), 3rd-row seats down; 2nd-row seats removed	141.5	141.5
Cargo Volume (cu. ft.), 3rd-row seats down; 2nd-row seats up	80.2	80.2
Cargo Volume (cu. ft.), behind 3rd-row seats	32.2	32.2
Passenger Volume (cu. ft.)	172.3	172.3

EPA MILEAGE ESTIMATES³/FUEL CAPACITY

City/Highway	16/23	16/23
Fuel-tank Capacity (gal.)	21.1	21.1

¹ Later availability. Bluetooth hands-free phone system replaces conversation mirror. ² Depending on options. ³ EPA estimates for comparison. Your actual mileage will vary with options, driving conditions, driving habits and vehicle's condition.

While the information contained in this brochure was correct at time of printing, specifications and equipment can change. Feature comparisons based on competitor models available at time of printing. No warranty or guarantee is being extended in this brochure, and Hyundai reserves the right to change product specifications and equipment at any time without incurring obligations. Some vehicles are shown with optional equipment. Specifications apply to U.S. vehicles only. Please contact your Hyundai dealer for current vehicle specifications.



HYUNDAI