



Innovation
that excites

2014 **VERSA® SEDAN**

WELCOME TO THE 2014 NISSAN VERSA® SEDAN DIGITAL BROCHURE

Full of images, feature stories, and all the specification and trim level information you need to help select your Versa® Sedan.

[Click here](#) to sign up for news and updates on the 2014 Nissan Versa® Sedan.



WOULDN'T IT BE COOL IF_

A CAR COULD GIVE YOU A WHOLE NEW VIEW?

Today, things are different. Small is big. Smart is sexy. And living richly isn't about how much you spend. The perfect car for this new way to roll? The 2014 Versa® Sedan. With a spacious interior, advanced technology and performance that's as responsible as it is responsive. Change is good. Especially when it looks like this.



Nissan Versa® Sedan SL shown in Brilliant Silver.

NISSAN PUREDRIVE™

INNOVATION THAT GIVES YOU THE BEST OF BOTH WORLDS.

40 Miles per gallon highway,
MPG so you can breeze past
the pump with ease¹

4 Low rolling resistance tires
that use less energy to roll,
so you use less fuel

.288 Drag coefficient,
CD thanks to an exceptionally
aerodynamic design²

Wouldn't it be cool if you didn't need a cramped car, a tiny engine or a hybrid powertrain to save fuel and help the environment? With Versa,[®] you get excellent fuel economy in a roomy, comfortable car that's lots of fun to drive. We got there by developing everything from exterior aerodynamics that whisper through the wind to an advanced 1.6-liter 4-cylinder engine to a virtually gearless Xtronic CVT[®] transmission that maximizes efficiency and performance. The PUREDRIVE™ badge also means that Versa[®] meets or exceeds the industry-average US Federal CAFE standards for model-year 2016.³ And best of all, Versa[®] is just one of a family of PUREDRIVE™ vehicles, reflecting Nissan's commitment to developing more environmentally friendly transportation for all of us.

PURE DRIVE™



Click the button to
see a short video
on Versa's CVT.
Or go to bit.ly/NissanCVT

¹2014 EPA Fuel Economy Estimates 31 city/40 highway MPG for Versa[®] Sedan 1.6-L with CVT. Actual mileage may vary with driving conditions. ²S Plus, SV and SL models; .319 on S model. ³Adoption criteria above are based upon US Federal CAFE standards as of July 2011 for MY 2016. Federal standards subject to change by US government.



**FREEDOM STARTS WHEN
YOU GET BEHIND THE WHEEL.**



Nissan Versa® Sedan SL shown in Titanium with optional equipment.



A little bit of planning goes a long way. When designing Versa®'s interior, we pushed the wheels to the corners, allowing the suspension to move out and away from the cabin. The result? The most rear leg room in its class.¹ Carpool or road trip, looks like Versa® is a star.

¹Ward's Segmentation. MY14 Versa® Sedan vs. 2013 Small Lower Class.

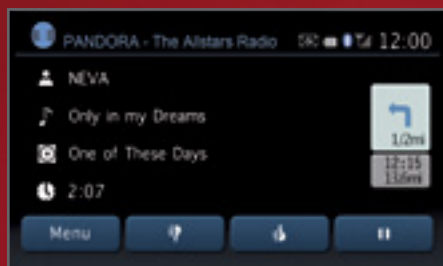
Nissan Versa® Sedan SL shown in Sandstone Cloth with optional equipment.

PLAY IT LOUD WITH APPS.

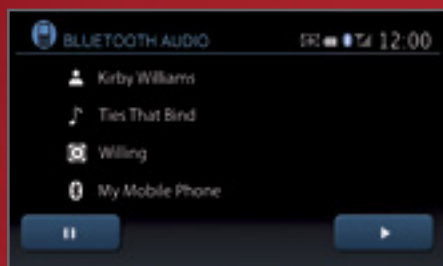
Pandora® radio compatibility. Looking for something new? Explore music based on your hand-picked favorites using Pandora® radio compatibility. Connect your Pandora®-equipped iPhone® through the USB input to listen to Pandora® free internet radio and use the 'thumbs up' or 'thumbs down' icons to rate songs – all right in the audio system display.

Streaming audio via Bluetooth.* Want to let your passengers play DJ? Just connect a Bluetooth®-enabled audio device, including your tablet, to stream music wirelessly, from any seat in the car.²

iPod®/USB input. Wouldn't you like to listen to your own playlists or podcasts? With the available iPod®/USB input, you can. Plug in your iPod® or other portable MP3 player through the USB port and control it through the audio controls.³



PANDORA®



BLUETOOTH®



iPOD®



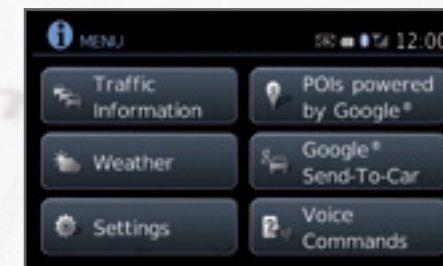
MAP IT OUT WITH GOOGLE.®

Navigation. Versa® Sedan's available 5.8" touch-screen display offers NavTraffic and NavWeather for real-time advisories to keep you on the move. Plus over five million points of interest, so you'll always have something new to discover.^{4,5}

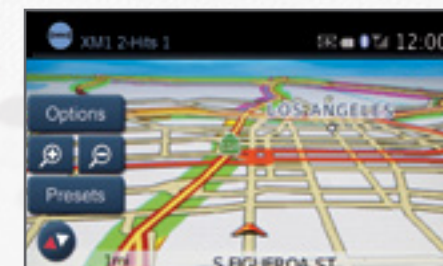
Points of Interest powered by Google.* Find that new restaurant, store or museum – even if you can't remember what it's called. Based on the latest information, NissanConnect's compatibility with Google® Points of Interest lets you search for all kinds of places, even without knowing the name or category. Once you find it, select it and you're on your way.¹

Google® Send-To-Car. NissanConnect's compatibility with Google® Send-To-Car lets you send any address to your Nissan Navigation System using your favorite connected device, like a smartphone or computer. When you start the car and connect to the network, the directions will be delivered and loaded into your navigation system.^{1,4,6}

Hands-free text messaging assistant. Now you can receive and respond to text messages without ever touching your phone. With a press of a button, have your text messages read to you and answer with pre-loaded responses, all via voice recognition.⁷



GOOGLE® MAPS MENU



REAL-TIME TRAFFIC



WEATHER

¹Certain remote functions require compatible phone, not included with vehicle. Cellular network and vehicle services provided by independent companies not within Nissan's control. Cellular network not available in all areas. Certain connected vehicle services, including but not limited to Points of Interest and Send-to-Car, may require subscription and owner consent to activate. Should service provider terminate/restrict service, service may be suspended or terminated without notice or liability to Nissan and/or its agents. Nissan not responsible for any equipment replacement or upgrades, or associated costs, that may be required for continued operation due to service changes. Standard text rates, voice minutes, roaming charges and/or data usage may apply. ²Availability of specific features is dependent upon the phone's Bluetooth® support. Please refer to your phone Owner's Manual for details. The Bluetooth word mark and logos are owned by Bluetooth SIG, Inc., and any use of such marks by Nissan is under license. ³Driving is serious business and requires your full attention. Do not operate any devices connected to the USB or auxiliary audio input jack while driving. ⁴Never program while driving.

GPS mapping may not be detailed in all areas or reflect current road regulations. ⁵Required SiriusXM Satellite Radio, NavTraffic and NavWeather subscriptions sold separately after trial period. Installation costs, one-time activation fee, other fees and taxes will apply. NavTraffic available in select markets. Services available only to those 18 or older in the 48 contiguous states and D.C. Fees and programming subject to change. Subscriptions governed by Customer Agreement available at siriusxm.com. ©2013 Sirius XM Radio Inc. Sirius, XM and all related marks and logos are trademarks of Sirius XM Radio Inc. ⁶Driving is serious business and requires your full attention. Only use phone or other communication devices when safe. ⁷Use the text messaging feature after stopping your vehicle in a safe location. If you have to use the feature while driving, exercise extreme caution at all times so full attention may be given to vehicle operation. Google® is a registered trademark of Google Inc. iPod® and iPhone® are registered trademarks of Apple, Inc. All rights reserved. iPod and iPhone not included. Pandora® is a registered trademark of Pandora Media, Inc.




Nissan Versa® Sedan SL shown in Charcoal Cloth with optional equipment.




14.9 CU. FT.
OF TRUNK SPACE¹

Life is easier when you can bring everything you need. Versa[®] Sedan's oversized trunk means there's no need to compromise. Jam session after work? No problem. Load your kit in and keep it safe and out of sight. Inside, versatile storage options get things organized with places for all of your essentials – even those lucky drumsticks.

¹Cargo and load capacity limited by weight and distribution. Always secure all cargo.



Split Fold-down Seats. An available 60/40 split fold-down rear seat gives you real flexibility carrying people and cargo. The huge pass-through means tall and wide items are always welcome along for the ride.¹



Clever Storage. Keep the things you need close at hand yet out of sight with Versa[®]'s spacious glove compartment. There are also convenient places designed especially for your phone and MP3 player.

NISSAN SAFETY SHIELD® PHILOSOPHY

INNOVATION THAT LOOKS OUT FOR YOU.

Wouldn't it be cool if you had the confidence you need for every part of your drive? The Nissan Safety Shield® technologies are a comprehensive approach to safety that guide the engineering and development of every vehicle we make. By keeping an eye on your vehicle's systems and the surroundings, assisting in handling unexpected situations, and helping to keep you safe in the unfortunate event of an accident, the Nissan Safety Shield technologies are our way of looking out for you and yours.

MONITOR

Smart technologies help monitor conditions. Like a rearview camera that helps you see something behind you, or a system that helps ensure you're travelling on properly inflated tires.

Tire Pressure Monitoring System with Available Easy-Fill Tire Alert^{1,2}

Lets you know when a tire is low. And Easy-Fill Tire Alert takes the guesswork out of filling your tires, with a beep of the horn when you've reached the correct pressure.

Available RearView Monitor³

RESPOND

Whether you need to hit the brakes hard or maneuver around an unexpected obstacle, these standard technologies help you respond to a potentially harmful situation.

Vehicle Dynamic Control helps you maintain your steered path.⁴

Traction Control System helps reduce wheelspin in low-traction situations.

Anti-lock Braking System helps you maintain steering control around obstacles while braking heavily.

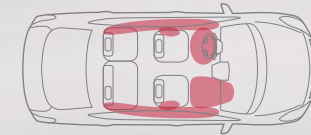
Electronic Brake force Distribution sends extra force to the rear brakes when you have additional weight of passengers or cargo in the back.

Brake Assist helps apply maximum braking force if it detects hard braking and senses you are in an emergency situation.



PROTECT

When a collision is unavoidable, Nissan's Zone Body construction helps absorb the impact while the advanced seat belt and air bag systems help protect passengers.



6 STANDARD AIR BAGS⁵

Nissan Advanced Air Bag System with dual-stage supplemental front air bags with seat belt and occupant-classification sensors⁵

Front seat-mounted side-impact supplemental air bags⁵

Roof-mounted curtain side-impact supplemental air bags⁵

LATCH System (Lower Anchors and Tethers for Children)



Nissan safety engineers have dedicated thousands of hours to evaluating hundreds of child restraints in Nissans. The result: An industry first, The Snug Kids® Child Safety Seat Fit Guide. This guide lists child seats that fit the rear seats of Nissan vehicles, as well as offers invaluable tips on correct installation. Look for the latest Fit Guide at NissanUSA.com/SnugKids.

Click the button to see a short video on how Snug Kids® helps you find the right CRS for your Nissan. Or go to bit.ly/NissanSnugKids

¹Vehicle must be on for the Easy-Fill Tire Alert to operate. ²Tire Pressure Monitoring System is not a substitute for regular tire pressure checks. ³Parking aid/convenience feature. Cannot completely eliminate blind spots or warn of moving objects. May not detect every object. Always check surroundings before moving vehicle. Not a substitute for proper backing procedures. Always turn to check what is behind you before backing up. ⁴VDC, which should remain on when driving except when freeing the vehicle from mud or snow, cannot prevent accidents due to abrupt steering, carelessness, or dangerous driving techniques. Always drive safely. ⁵Air bags are only a supplemental restraint system; always wear your seat belt. Even with the occupant-classification sensor, rear-facing child restraints should not be placed in the front-passenger's seat. Also, all children 12 and under should ride in the rear seat properly secured in child restraints, booster seats, or seat belts according to their size. Air bags will only inflate in certain accidents; see your Owner's Manual for more details. Inflated air bags shown for illustration purposes only; actual coverage area may differ. Air bags inflate after deployment.



GENUINE NISSAN ACCESSORIES.

Every Genuine Nissan Accessory is: custom-fit, custom-designed and durability-tested; backed by Nissan's 3-year/36,000-mile (whichever occurs first) limited warranty; and can be financed when installed by dealer at time of purchase.¹

A. Interior Accent Lighting

Bring some disco to your drive.

B. 15" Aluminum-alloy Wheels

A whole new way to roll.

C. Rear Decklid Spoiler and Chrome Trunk Accent

Spoil yourself in style (sold separately).

D. Interior Trim Appliqués

It's all about the details.

E. 16" Sporty Aluminum-alloy Wheels

Attitude comes standard.

F. Illuminated Kick Plates

Fewer scuffs and a grand entry, every time.

G. Carpeted Trunk Mat²

Because being a trunk isn't easy.

H. All-season Floor Mats

So your carpet can weather the weather.

Additional Accessories:

- Nissan VTRS (Vehicle Tracking and Recovery System)³
- Portable Cargo Organizer
- Chrome Door Handle Accents
- Fog Lights
- Auto-dimming Rearview Mirror with HomeLink⁴ and Compass
- Splash Guards
- And More

¹Covered by Nissan's Limited Warranty on Genuine Nissan Accessories for the longer of 12 months/12,000 miles (whichever occurs first) or the remaining period under the 3-year/36,000-mile (whichever occurs first) Nissan New Vehicle Limited Warranty. Terms and conditions apply. See Warranty Information Booklet for details. ²Cargo and load capacity limited by weight and distribution. Always secure all cargo. ³VTRS requires owner registration, a constant 12-volt source, and cellular and GPS satellite availability to function properly. ⁴Limited availability. HomeLink[®] is a registered trademark of Johnson Controls Technology Company.

Click the button to see short videos on Genuine Nissan Accessories in action. Or go to bit.ly/gnavideos_versasedan

TURN BRAND-NEW INTO ALL YOU.

For more information and to shop online for Genuine Nissan Accessories, go to parts.NissanUSA.com.



Nissan Versa[®] Sedan SV shown in Titanium with 15" 6-spoke Aluminum-alloy Wheels,⁴ Fog Lights, Splash Guards and Side-window Deflectors.

CHOOSE YOUR TRIM LEVEL

S

- 1.6-liter DOHC 4-cylinder engine
- 5-speed manual transmission or 4-speed automatic transmission
- 15" Steel wheels with full wheel covers
- P185/65HR15 all-season low rolling resistance tires
- Front tire and center fascia air deflectors
- AM/FM/CD audio system with auxiliary audio input jack¹
- Trip computer
- Air conditioning
- Sun visors with extensions
- Six standard air bags
- Anti-lock Braking System with Electronic Brake force Distribution and Brake Assist
- Vehicle Dynamic Control (VDC) with Traction Control System (TCS)



SV

INCLUDES S PLUS EQUIPMENT PLUS:

- Chrome-accented grille and outside door handles
- Glossy black B-pillars
- Dual power body-color outside mirrors
- Integrated Key with remote keyless entry
- Remote trunk release
- Power door locks with auto-locking features
- Power windows with driver's one-touch auto-down feature
- Fine Vision electroluminescent gauges
- 6-way manual driver's seat
- Driver's seat armrest
- Passenger seatback pocket
- Upgraded cloth seat trim
- 60/40 Split fold-down rear seats
- Cloth door trim accent
- Silver accents on dash, vent rings, shift knob and shifter surround
- Chrome inside door handles, chrome-accented center vents and parking brake



KEY AVAILABLE PACKAGE:

- Convenience Package

S PLUS

INCLUDES S EQUIPMENT PLUS:

- Up to 40 MPG highway²
- Standard Xtronic CVT[®] (Continuously Variable Transmission)
- Rear tire air deflectors
- Rear spoiler with integrated LED brake light
- Cruise control
- Silver accents on steering wheel
- Rear speakers



SL

INCLUDES SV EQUIPMENT PLUS:

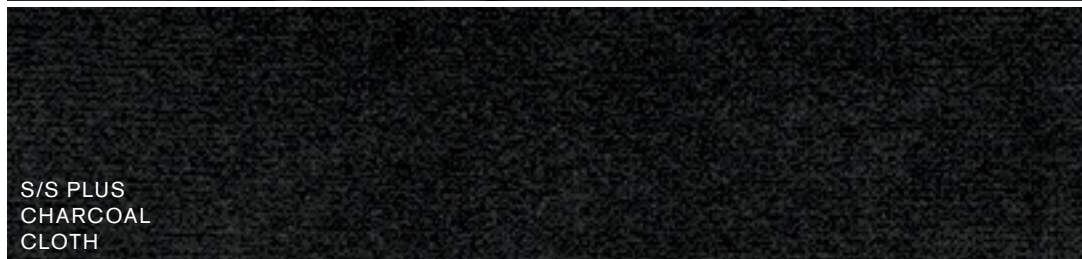
- 16" Aluminum-alloy wheels
- P195/55HR16 all-season low rolling resistance tires
- Fog lights
- Nissan Intelligent Key[®] with Push Button Ignition
- Bluetooth[®] Hands-free Phone System³
- Premium AM/FM/CD audio system with 4.3" color display
- MP3/WMA CD playback capability
- SiriusXM Satellite Radio⁴
- USB connection port for iPod[®] interface and other compatible devices
- Steering wheel-mounted audio controls
- Variable intermittent windshield wipers
- Front map light with key linked illuminated entry
- Passenger visor vanity mirror
- Foldable assist grips
- Tricot fabric headliner
- Tire Pressure Monitoring System (TPMS) with Easy-Fill Tire Alert
- Nissan Vehicle Immobilizer System



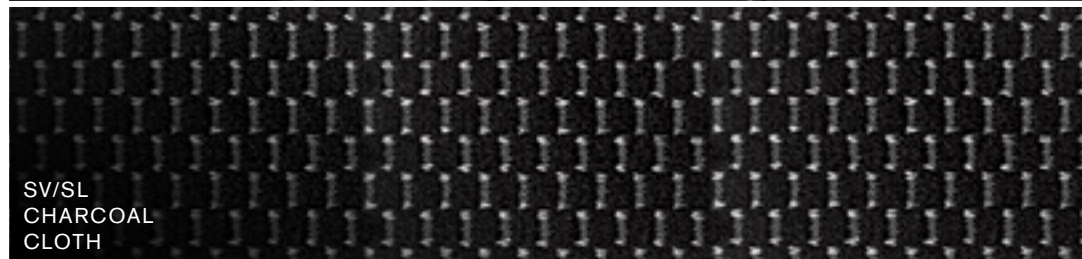
KEY AVAILABLE PACKAGE:

- Tech Package

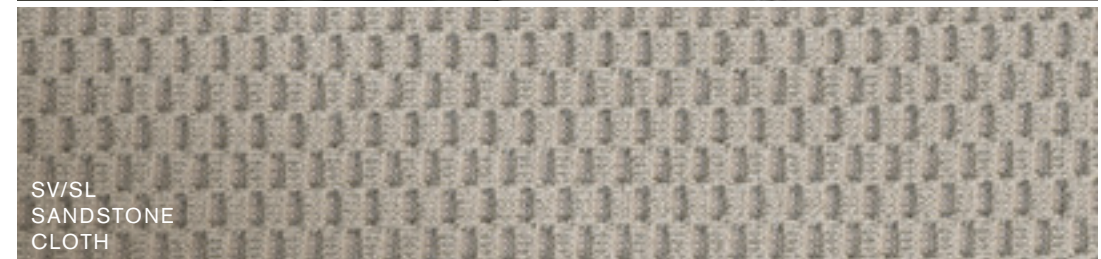
CHOOSE YOUR FABRIC



S/S PLUS
CHARCOAL
CLOTH



SV/SL
CHARCOAL
CLOTH



SV/SL
SANDSTONE
CLOTH

SPECIFICATIONS

Engine	S	S Plus	SV	SL
HR16DE – 1.6-liter DOHC 16-valve 4-cyl. engine	■	■	■	■
— Horsepower – 109 hp @ 6,000 rpm				
— Torque – 107 lb-ft @ 4,400 rpm				
Emissions – Tier 2-Bin 5 (EPA); LEV2-ULEV (CARB)	■	■	■	■
Dual injector system	■	■	■	■
Continuously Variable Valve Timing Control System (CVTCS) on intake and exhaust valves	■	■	■	■
Nissan Direct Ignition System	■	■	■	■
Platinum-tipped spark plugs	■	■	■	■
Electronic drive-by-wire throttle	■	■	■	■

Drivetrain	S	S Plus	SV	SL
Front engine/Front-Wheel Drive	■	■	■	■
5-speed manual transmission	■			
4-speed automatic transmission	□			
Xtronic CVT® (Continuously Variable Transmission)		■	■	■

Brakes	S	S Plus	SV	SL
Vented front disc/rear drum brakes	■	■	■	■
Anti-lock Braking System (ABS)	■	■	■	■
Electronic Brake force Distribution (EBD)	■	■	■	■
Brake Assist	■	■	■	■

Suspension/Steering	S	S Plus	SV	SL
Independent strut front suspension with stabilizer bar	■	■	■	■
Torsion beam rear axle with integrated stabilizer bar	■	■	■	■
Vehicle-speed-sensitive electric power steering	■	■	■	■

Wheels/Tires	S	S Plus	SV	SL
15" x 5.5" steel wheels with wheel covers	■	■	■	
15" x 5.5" 7-spoke aluminum-alloy wheels			□	
15" x 5.5" 5-split spoke aluminum-alloy wheels	□	□	□	
16" x 6.0" 8-spoke aluminum-alloy wheels				■
16" x 6.0" Sporty aluminum-alloy wheels				□
P185/65HR15 all-season low rolling resistance tires	■	■	■	
P195/55HR16 all-season low rolling resistance tires				■

■ Standard
 □ Optional
 □ Accessory
 □ Part of SV Convenience Package
 □ Part of SL Tech Package

Exterior Features	S	S Plus	SV	SL
Multi-reflector halogen headlights	■	■		■
Fog lights			□	■
Dual manual black outside mirrors	■	■		
Dual power body-color outside mirrors			■	■
Black grille	■	■		
Chrome-accented grille			■	■
Glossy black B-pillars			■	■
Black door handles	■	■		
Chrome door handles			■	■
Chrome trunk accent	□	□	□	□
Front tire and center fascia air deflectors	■	■	■	■
Rear tire air deflectors	■	■	■	■
Splash guards	□	□	□	□
Rear spoiler	□			
Rear spoiler with integrated LED brake light		■	■	■

Comfort/Convenience	S	S Plus	SV	SL
NissanConnect SM with Navigation, including 5.8" color touch-screen monitor and Voice Recognition for audio and navigation				□
NavTraffic and NavWeather provided by SiriusXM ¹				□
POIs powered by Google [®] and Google [®] Send-To-Car				□
Hands-free text messaging assistant				□
RearView Monitor				□
Bluetooth [®] Hands-free Phone System			□	■
Fine Vision electroluminescent gauges			■	■
Trip computer (average MPG, current MPG, distance to empty; SV and SL add service interval)	■	■	■	■
Air conditioning	■	■	■	■
Integrated Key with remote keyless entry			■	
Nissan Intelligent Key [®] with Push Button Ignition				■
Remote trunk release			■	■
Power door locks with auto-locking feature			■	■
Power windows with driver's one-touch auto-down feature			■	■
Tilt steering column	■	■	■	
Cruise control		■	■	■
Variable intermittent windshield wipers				■

Comfort/Convenience (continued)	S	S Plus	SV	SL
Rear window defroster	■	■	■	■
Auto-dimming inside rearview mirror with HomeLink [®]				
— Universal Transceiver and digital compass	□	□	□	□
Front map light with key linked illuminated entry			□	■
Trunk light	■	■	■	■
Front door pockets with bottle holders	■	■	■	■
Front and rear cup holders	■	■	■	■
Passenger seatback pocket			■	■
Sun visors with extensions	■	■	■	■
Passenger visor vanity mirror			□	■
Foldable assist grips			□	■
Digital clock	■	■	■	■
Auxiliary 12-volt DC power outlet	■	■	■	■
Battery saver	■	■	■	■

Seating/Appointments	S	S Plus	SV	SL
4-way manual driver's seat	■	■		
6-way manual driver's seat			■	■
Driver's seat armrest			■	■
Cloth seat trim	■	■		
Upgraded cloth seat trim			■	■
Carpeted floor mats	□	□	□	□
Cloth door trim accent			■	■
60/40 Split fold-down rear seats			■	■
Silver accents on dash, vent rings, shift knob and shifter surround			■	■
Silver accents on steering wheel		■		■
Interior trim appliqué			□	□
Chrome inside door handles, chrome-accented center vents and parking brake			■	■
Illuminated kick plates	□	□	□	□
Tricot fabric headliner			□	■
Interior trunk lid trim			■	■
Carpeted trunk mat	□	□	□	□

SPECIFICATIONS

Audio/Entertainment	S	S Plus	SV	SL
AM/FM/CD audio system	■	■	■	
Upgraded AM/FM/CD audio system			^c	
Premium AM/FM/CD audio system with 4.3" color display				■
Two speakers	■			
Four speakers		■	■	■
SiriusXM Satellite Radio ¹				■
Pandora [®] radio compatibility				^T
Streaming audio via Bluetooth [®] wireless technology				^T
MP3/WMA CD playback capability			^c	■
Auxiliary audio input jack	■	■	■	■
USB connection port for iPod [®] interface and other compatible devices				■
Radio Data System (RDS)			^c	■
Speed-sensitive volume control			^c	■
Steering wheel-mounted audio controls			^c	■

Safety/Security	S	S Plus	SV	SL
Nissan Advanced Air Bag System with dual-stage supplemental front air bags with seat belt and occupant-classification sensors	■	■	■	■
Driver and front-passenger seat-mounted side-impact supplemental air bags	■	■	■	■
Roof-mounted curtain side-impact supplemental air bags for front and rear-seat outboard occupant head protection	■	■	■	■
Vehicle Dynamic Control (VDC) with Traction Control System (TCS)	■	■	■	■
3-point ALR/ELR passenger seat belt system (ELR for driver)	■	■	■	■
Front seat belts with pretensioners and load limiters	■	■	■	■
Height-adjustable front head restraints			■	■
Height-adjustable rear outboard head restraints	■	■	■	■
LATCH System (Lower Anchors and Tethers for CHildren)	■	■	■	■
Zone Body construction with front and rear crumple zones	■	■	■	■

Safety/Security (continued)	S	S Plus	SV	SL
Hood-buckling creases	■	■	■	■
Energy-absorbing steering column	■	■	■	■
Pipe-style steel side-door guard beams	■	■	■	■
Tire Pressure Monitoring System (TPMS)	■	■	■	
Tire Pressure Monitoring System (TPMS) with Easy-Fill Tire Alert				■
Nissan Vehicle Immobilizer System				■
Nissan VTRS (Vehicle Tracking and Recovery System) ²	^{AC}	^{AC}	^{AC}	^{AC}

PACKAGES

^c SV Convenience Package

15" x 5.5" 7-spoke aluminum-alloy wheels
 Bluetooth[®] Hands-free Phone System
 Upgraded AM/FM/CD audio system
 MP3/WMA CD playback capability
 Radio Data System (RDS)
 Speed-sensitive volume control
 Steering wheel-mounted audio controls
 Front map light with key linked illuminated entry
 Passenger visor vanity mirror
 Foldable assist grips
 Tricot fabric headliner

^T SL Tech Package

NissanConnectSM with Navigation, including 5.8" color touch-screen monitor and Voice Recognition for audio and navigation
 NavTraffic and NavWeather provided by SiriusXM¹
 POIs powered by Google[®] and Google[®] Send-To-Car
 Pandora[®] radio compatibility
 Streaming audio via Bluetooth[®] wireless technology
 Hands-free text messaging assistant
 RearView Monitor

DIMENSIONS/CAPACITIES/WEIGHTS/MPG

Dimensions – Inches	
Exterior	
Wheelbase	102.4
Overall length	175.4
Overall width	66.7
Overall height	59.6
Track width (front/rear)	58.3/58.5

Aerodynamics – Cd	S	S Plus	SV	SL
Drag coefficient	0.319	0.288	0.288	0.288

Interior (front/rear)

Head room	39.8/36.6
Leg room	41.8/37.0
Hip room	48.1/46.2
Shoulder room	51.7/51.9

Capacities

Seating capacity	5
Interior passenger volume (cu. ft.)	90.2
Cargo volume (cu. ft.)	14.9
Fuel tank (gals.)	10.8

Curb Weights – Lbs.

Base Total	S	S Plus	SV	SL
Manual transmission	2,363		–	–
Automatic transmission	2,421		–	–
Xtronic CVT [®]		2,437	2,468	2,498

2013 EPA Fuel Economy Estimates

City/Hwy/Combined MPG	S	S Plus	SV	SL
Manual transmission	27/36/30		–	–
Automatic transmission	26/35/30		–	–
Xtronic CVT [®]		31/40/35	31/40/35	31/40/35

¹Actual mileage may vary with driving conditions – use for comparison only.

BUYING/OWNING



Nissan Motor Acceptance Corporation. Whether you're buying or leasing, you'll find attractive rates and flexible terms to make your purchase more accessible.

College Grad Program. Ask about our special new vehicle pricing available to individuals up to two years after graduation.

Active and Reserve US Military Program. Ask about our fixed discount on new vehicle pricing available to those serving our country.

New Vehicle Limited Warranties. Protection for your new Nissan includes 3-year/36,000-mile (whichever occurs first) basic coverage and 5-year/60,000-mile (whichever occurs first) powertrain coverage. Terms, conditions and exclusions apply. See Warranty Information Booklet for complete details.

Security+Plus* For additional peace of mind, a variety of extended service plans lets you tailor the coverage to your driving habits.

Maintenance+Plus* This extended plan ensures your Nissan will receive up to 17 different services and over 33 different inspection items at each visit, using the most up-to-date diagnostic equipment available.

Genuine Nissan Parts. When it comes time for service, any necessary replacement parts will be made using Genuine Nissan new or remanufactured parts, or Nissan-approved parts. And they're the only parts to carry Nissan's factory-backed limited warranty.

Nissan Mobility Assist. This program offers reimbursements toward the purchase and installation of certain mobility assistance products for program-eligible Nissans. Go to NissanUSA.com/mobility for more info.

Nissan's environmental action plan focuses on several key areas. Increasing production of Zero Emission vehicles, including the 100% electric LEAF.[®] Improving fuel efficiency through our PUREDRIVE™ measures. And reducing the environmental impact of manufacturing, as seen at our new, energy-efficient, low-emissions paint plant in Tennessee. For more information, log on to NissanUSA.com/green



At NissanUSA.com, you'll find virtual product demonstrations, a way to "build your own Nissan," a dealer locator, and more information about key Nissan support services. Or if you'd prefer, call **1-800-NISSAN-3** for answers to specific questions about Versa[®] or any other Nissan vehicle. The Nissan names, logos, product names, feature names, and slogans are trademarks owned by or licensed to Nissan Motor Co. Ltd. and/or its North American subsidiaries. **Always wear your seat belt, and please don't drink and drive.** ©2013 Nissan North America, Inc.

This brochure is intended for general descriptive and informational purposes only. It is subject to change and does not constitute an offer, representation or warranty (express or implied) by Nissan North America, Inc. Interested parties should confirm the accuracy of any information in this brochure as it relates to a vehicle directly with Nissan North America, Inc., before relying on it to make a purchase decision. Nissan North America, Inc., reserves the right to make changes, at any time, without prior notice, in prices, colors, materials, equipment, specifications, and models and to discontinue models or equipment. Due to continuous product development and other pre- and post-production factors, actual vehicle, materials and specifications may vary from this brochure. Some vehicles shown with optional equipment. See the actual vehicle for complete accuracy. Availability and delivery times for particular models or equipment may vary. Specifications, options and accessories may differ in Hawaii, U.S. territories and other countries. For additional information on availability, options or accessories, see your Nissan dealer or contact Nissan North America, Inc.

And sign up for the latest news and updates on the 2014 Nissan Versa.[®]

or visit NissanUSA.com/versa

Los folletos de Nissan también están disponibles en español.

Para descargar el PDF, visita:

NissanUSA.com/folletos-espanol

And follow Nissan on: