

# 2006 MONTE CARLO



CHEVROLET



# MONTE CARLO 2006

## AN ALL-NEW APPROACH TO A WINNING TRADITION.

How do you beat the car that's already proven itself with more wins than any other in modern NASCAR history?\* You go back to the drawing board and find new ways to deliver more performance and refinement. And you wrap it all up in a style that makes an even more compelling statement. Welcome to the next generation Monte Carlo – the car that heralds its return to V8 power. And it's not just any V8 – the Monte Carlo SS features the 303 hp 5.3L small-block V8 with Displacement on Demand for increased fuel efficiency. And that's only the beginning. LTZ, LT and LS models each provide their own distinct interpretation of Monte Carlo's winning tradition. The new 2006 Monte Carlo. For All Life's Roads.

\*Modern era: 1972 – 2005.

AT LEFT: Monte Carlo SS shown in Victory Red, Monte Carlo LTZ in Black and Monte Carlo LT in Silverstone Metallic.

**CHEVROLET**



**FOR ALL LIFE'S ROADS**

For more information about Monte Carlo visit our Web site at  
[montecarlo.gmcanada.com](http://montecarlo.gmcanada.com)



# SS

**DON'T WORRY, IT'S STREET LEGAL.** Serious performance demands serious power. The 303 hp 5.3L V8 under the hood of the Monte Carlo SS is the signature piece in this technological package. But there are plenty of other highlights, including 18-in. flangeless aluminum wheels with Goodyear Eagle RS-A W-speed-rated performance tires, a Sport suspension system, full-function traction control, and four-wheel disc brakes with ABS. Inspired by the track. Built for the street. **Monte Carlo SS.**

Monte Carlo SS, shown in Laser Blue Metallic.





Monte Carlo SS interior, shown in Ebony with available Nuance leather seating surfaces.

## INTERIOR

IT'S NOT JUST A RIDE,  
IT'S AN EXPERIENCE.

Monte Carlo enhances your enthusiasm for driving with an exceptionally sophisticated, well-appointed interior. Keeping you and your passengers calm, cool and collected is easy with the dual-zone climate controls. In fact, you'll get a head start on heating or cooling the interior thanks to the factory-installed remote vehicle start system. Both features are standard on LT, LTZ and SS models. Another form of comfort is provided by the standard safety and security of OnStar. It's all part of the complete Monte Carlo experience.



7

KEY FEATURES:

- Power 6-way driver seat
- Dual-zone climate controls on LT, LTZ and SS
- Remote vehicle start on LT, LTZ and SS
- Cruise control
- Leather-wrapped steering wheel with sound system controls on LT, LTZ and SS
- Power windows, door locks and exterior mirrors
- OnStar, including one-year of the Safe & Sound Plan.



## TECHNOLOGY

### ALUMINUM ENGINE CRADLE

The very stiff, yet exceedingly lightweight engine cradle reduces the amount of road noise and engine vibration that penetrate Monte Carlo's interior.

### REMOTE VEHICLE START SYSTEM

The factory-installed remote vehicle start system allows you to start the engine from a distance of up to 60 m (200 ft.) simply by depressing a button on your key fob, so you can heat or cool the interior before entering.

### TRACTION CONTROL

Helping reduce wheelspin when accelerating on slippery surfaces, the full-function traction control system monitors wheelspin, and then controls it by reducing engine power and modulating the brakes through the anti-lock braking system. Standard on LTZ and SS.

### NEW WIPER BLADES

A new, flatter wiper blade design minimizes streaking and wind noise by pre-forming the blade to conform to the curvature of the windshield.

### TIRE PRESSURE MONITORING SYSTEM

This system detects when tire pressure is either too high or too low, and then alerts you through the deluxe Driver Information Centre. Standard on LTZ and SS.

### QUIET STEEL

By sandwiching a layer of viscoelastic material between the layers of steel used between the engine and the passenger compartment, Monte Carlo's Quiet Steel helps minimize the intrusion of exterior noise.

### DUAL-STAGE AIR BAGS

Dual-stage frontal air bags\* are standard on all Monte Carlos, as is a Passenger Sensing System that deactivates the air bag when the passenger seat is not being used, or when it is occupied by a child or small adult. In addition, seat-mounted side-impact air bags are available on all models.

### SAFETY BELT PRE-TENSIONERS

By cinching during a moderate-to-severe collision, the new outboard front safety belt pre-tensioners help to reduce forward movement.

### SAFETY CAGE CONSTRUCTION

Monte Carlo surrounds you and your passengers with a protective, heavy-gauge, reinforced-steel cage that helps protect passengers during a collision.

### BRAKE PERFORMANCE

Electronic Brake Force Distribution helps optimize braking performance by adapting to different loads, traction and vehicle speeds. It is included with the available anti-lock braking system.





#### RIDE QUALITY

Monte Carlo's refined ride is the product of an improved four-wheel independent suspension system that incorporates four-stage strut valving and twin-tube dampers.

#### GM OIL LIFE SYSTEM

The GM Oil Life System alerts you when it's time to change the engine oil. The system could extend the distance between oil changes up to 12,000 km (7200 mi.).\*\* The result can be fewer oil changes, reducing service requirements and the use of non-renewable resources.

**\*A NOTE ON CHILD SAFETY:** Always use safety belts and proper child restraints, even in vehicles equipped with air bags. Even with the Passenger Sensing System, children are safer when properly secured in a rear seat. Never place a rear-facing infant restraint in the front seat of any vehicle equipped with an active frontal air bag. Refer to the vehicle Owner's Manual and child safety seat instructions for more information.

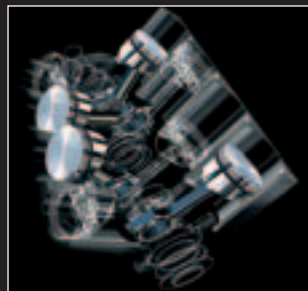
## POWER

### DIFFERENT DRIVERS. DIFFERENT ENGINES.

It takes a certain type of personality to thrive on the pace set by the 303 hp output of the V8 in the Monte Carlo SS. That's why Monte Carlo offers three technologically advanced engines. While the small-block V8 incorporates Displacement on Demand, the 211 hp 3.5L V6 and the 242 hp 3.9L V6 engines employ variable valve timing to maximize output and efficiency. Monte Carlo: not just an impressive model lineup – an impressive engine lineup.



The 5.3L V8 Displacement on Demand (DOD) engine on Monte Carlo SS features pent-roof combustion chambers, flat-top pistons and a composite intake manifold that all help the engine generate outstanding power without having to use premium gasoline. The output is 303 hp @ 5600 rpm and 323 lb.-ft. of torque at @ 4400 rpm.



The 5.3L V8's Displacement on Demand closes intake and exhaust valves in four of the eight cylinders in low-demand situations, which can increase fuel efficiency by as much as eight percent.\* When more power is needed, the valves are reopened seamlessly. \*Fuel economy estimates based on GM testing.

## FEATURES

### STAY TUNED.

Driving is a truly interactive activity. You receive input from the gauges, and you provide input through the steering wheel, pedals and other controls. In Monte Carlo that interactivity is enhanced by the Driver Information System that monitors a series of important vehicle functions and then relays that information on the LCD readout on the instrument panel. So you can stay in tune with your Monte Carlo.

#### KEY FEATURES:

- Driver Information System with personalization features on LS
- Deluxe Driver Information System with compass and exterior temperature readouts on LT, LTZ and SS
- CD player on LS
- CD player with MP3 playback on LT, LTZ and SS
- All sound systems include auxiliary input jack for devices such as MP3 players
- 8-speaker Bose premium amplified sound system on SS.



Monte Carlo SS instrument panel, shown in Ebony with available features.



Staying tuned is that much easier with the Monte Carlo's available sound system. It enables you to choose from a display of AM and FM stations, without having to switch between broadcast bands.



The Driver Information System enables you to personalize a variety of functions, including the programmable power door locks. Just one more way that the Monte Carlo driving experience is truly individual.



Chevrolet is known for building vehicles that deliver excellent value and dependability. One important aspect of Chevrolet value is represented by the advanced safety, security and convenience of OnStar.\* OnStar uses advanced communications technology to enhance your peace of mind whenever you're in your Chevrolet. All it takes is a single push of the blue OnStar button usually located on the interior rear-view mirror, in the overhead console, or near the radio display – the button connects you with one of our specially trained OnStar Advisors. They are standing by, ready to provide support 24 hours a day, 365 days a year.

What can OnStar Advisors do for you? They can provide a wealth of information and perform a variety of services, including a remote diagnostic check of your vehicle's engine and electrical components. In an emergency, an Advisor will attempt to locate your vehicle, find out what assistance you need, and notify nearby emergency service providers.\* And if air bags are deployed in your vehicle, an Advisor will contact you to determine if you are in need of assistance.

Another convenient feature is OnStar Hands-Free Calling, a hands-free, voice-activated wireless technology integrated into your vehicle. It's there in case your hand-held phone is lost, forgotten or has a low battery. Even better, there are no additional monthly fees, or additional long distance and roaming charges. And as a new customer, you will receive 30 complimentary minutes good for two months after activation.

Now you can enjoy the peace of mind that comes with knowing you're doing all you can to help keep you, your family, and your vehicle safe. Just ask the almost 150,000 people who have become OnStar subscribers in Canada. How hard does OnStar work for you? The facts speak for themselves: every month in Canada OnStar Advisors handle an average of 9100 routing calls, 2500 emergency calls, 2600 door unlocks, and 625 Roadside Assistance dispatches.

OnStar offers two different service plans, allowing you to select the services that are most convenient for you. The Safe & Sound Plan is included for the first year on Monte Carlo. In addition, the available Directions & Connections Plan offers all of the safety and security services included in the Safe & Sound Plan, plus you'll have access to driving directions and information and convenience services and RideAssist. See your dealer for more information on plans and services.

\*OnStar services require vehicle electrical system (including battery), wireless service, and GPS satellite signals to be available and operating for features to function properly. Not all OnStar features are available on all vehicles. OnStar Hands-Free Calling requires a Hands-Free enabled vehicle, existing OnStar service contract, and prepaid calling minutes, and is not available in Alaska and some other markets. Calls may be made to the U.S. and Canada only. OnStar voice recognition system may not work with some voices. OnStar acts as a link to existing emergency service providers. Subscription Service Agreement required. Due to the transition of the wireless industry from analogue to digital technology, as of January 1, 2008, OnStar plans to offer service only through equipment that operates on the digital network, which may require the purchase of a system upgrade for eligible vehicles. Call 1.888.4.ONSTAR (1.888.466.7827), TTY 1.877.248.2080 or visit onstar.ca for OnStar's Terms & Conditions, Privacy Policy, and system limitations and details.

## COMMITMENT

Every Chevrolet comes with peace of mind as a standard feature. We're not only committed to engineering and manufacturing vehicles that are rewarding to drive – we're equally committed to making the ownership experience just as responsive to your specific needs. You'll find that our comprehensive support programs make it easier to purchase or lease a Chevrolet Monte Carlo. They also help to protect you and your vehicle down the road. A powerful example of the level of protection you can expect is the GM TOTAL™ Warranty. It's so thorough it covers your vehicle – from the roof right down to the tires. So when you drive off the lot of your Chevrolet dealership, you can do so with total confidence. Peace of mind is knowing that your vehicle is built for the long haul, and is backed by a comprehensive warranty.

## THE GM TOTAL™ WARRANTY:!

The GM TOTAL™ Warranty is your promise of total warranty protection. It covers every new Chevrolet Monte Carlo for 3 years or 60,000 km.\* Complete vehicle repairs are covered,\*\* including parts and labour, with no deductible. The warranty includes:

- 3-year/60,000 km\* complete vehicle repair coverage
- 6-year/160,000 km\* corrosion perforation coverage
- 8-year/130,000 km\* coverage on catalytic converters and powertrain control modules (PCMs).

\*Whichever comes first. \*\*To correct any defects in material or workmanship occurring during the warranty period. Regular maintenance is not included, nor is excessive wear and tear caused by reckless or negligent driving.

## OTHER OWNERSHIP PRIVILEGES AND PROGRAMS: !

- **Roadside Assistance** – 24/7 service via toll-free number during your warranty period, anywhere in Canada or the United States
- **Courtesy Transportation** – may be offered during the warranty period
- **GM Protection Plan (GMPP)** – the only extended services contract backed by the resources and commitment of General Motors. GMPP may be purchased at the time of your sale or lease, or subsequently
- **GM Mobility Program** – you may be eligible for reimbursement of up to \$1000 (taxes included) for adaptive equipment for your GM vehicle
- **GM Accessories** – personalize your vehicle with GM Accessories, specifically engineered for your new GM vehicle
- **GM Goodwrench Service** – with GM-certified technicians and GM-approved parts, nobody knows your GM vehicle better.

## TO HELP YOU PURCHASE OR LEASE A NEW VEHICLE:

- **GMAC Financing** – on-the-spot financing at your GM dealership!<sup>†</sup>
- **GMAC SMARTLEASE** – a smart alternative to traditional financing!<sup>†</sup>
- **GM Student Bonus Program** – GM will cover the first two purchase finance or lease payments and the lease security deposit on eligible new GM vehicles for students and recent graduates of high school, college or university!
- **The GM Card** – eligible cardholders may be able to redeem up to \$3500 on GM Card® Earnings toward the total purchase price or lease down payment on selected vehicles. For more information on The GM Card please call 1-800-461-3279!<sup>†</sup>

## INFORMATION RESOURCES:

You can find more information about these programs from your GM dealer, or at these information centres:

- The GM Web site at [gmcanada.com](http://gmcanada.com)
- The GM Customer Communication Marketing Centre at 1-800-GM-DRIVE (1-800-463-7483 or 1-800-263-3830 for TDD users)  
– for information about any GM product or service, including The GM Card and the GM Mobility Program
- For information about GMAC visit [gmcanada.com](http://gmcanada.com) or call 1-800-616-4622.

<sup>†</sup>Conditions and limitations apply.

<sup>††</sup>Subject to eligibility.

## MONTE CARLO STANDARD AND OPTIONAL FEATURES

SAFETY AND SECURITY	LS	LT	LTZ	SS
<b>Air bags</b> – dual-stage, driver and front-passenger, frontal with Passenger Sensing System	S	S	S	S
<b>Air bags</b> – driver and front-passenger, seat-mounted side-impact	0	0	0	0
<b>Brake/transmission shift interlock</b>	S	S	S	S
<b>Door locks</b> – automatic power, programmable with lock-out protection	S	S	S	S
<b>Headlights</b> – Daytime Running Lights with automatic light control	S	S	S	S
<b>Keyless entry system</b> – remote, includes Panic feature	S	S	S	S
<b>OnStar In-Vehicle Communications and Assistance Service</b> – includes one-year Safe & Sound Plan	S	S	S	S
<b>Safety restraints</b> – LATCH (Lower Anchors and top Tethers for Children), rear seats	S	S	S	S
<b>Theft-deterrent system</b> – PASS-Key III+ immobilizer	S	S	S	S
<b>Theft-deterrent system</b> – audible/visible content theft alarm	–	–	S	S
<b>Traction control</b> – electronic, full-function, all-speed	0 <sup>1</sup>	0 <sup>1</sup>	S	S
<b>Trunk</b> – internal manual trunk entrapment release handle	S	S	S	S

MECHANICAL	LS	LT	LTZ	SS
<b>Battery</b> – with run-down protection	S	S	S	S
<b>Brakes</b> – power, 4-wheel disc	S	S	S	S
<b>Brakes</b> – 4 wheel anti-lock braking system (ABS)	0 <sup>2</sup>	0 <sup>2</sup>	S	S
<b>Drive</b> – front-wheel	S	S	S	S
<b>Engine</b> – 3.5L V6 VVT with SFI Horsepower – 211 @ 5900 rpm, Torque – 214 lb.-ft. @ 4000 rpm	S	S	–	–
<b>Engine</b> – 3.9L V6 VVT with SFI Horsepower – 242 @ 6000 rpm, Torque – 242 lb.-ft. @ 4800 rpm	–	–	S	–
<b>Engine</b> – 5.3L V8 with SFI and Displacement on Demand (DOD) technology Horsepower – 303 @ 5600 rpm, Torque – 323 lb.-ft. @ 4400 rpm	–	–	–	S
<b>Engine block heater</b>	S	S	S	S
<b>Exhaust system</b> – aluminized stainless steel	S	S	S	S
<b>Exhaust system</b> – dual outlets	–	–	S	–
<b>Exhaust system</b> – dual muffler, dual outlets with bright tips	–	–	–	S
<b>Steering</b> – power, rack-and-pinion	S	S	S	S
<b>Suspension</b> – 4-wheel independent, Handling	S	S	S	–
<b>Suspension</b> – 4-wheel independent, Sport	–	–	–	S
<b>Transmission</b> – 4-speed automatic with overdrive	S	S	S	–
<b>Transmission</b> – heavy-duty 4-speed automatic with overdrive	–	–	–	S
<b>Vehicle starter system</b> – remote	0 <sup>3</sup>	S	S	S

EXTERIOR	LS	LT	LTZ	SS
<b>Antenna</b> – rear-window integrated	S	S	S	S
<b>Fog lights</b>	–	–	S	S
<b>Glass</b> – Solar-Ray, tinted	S	S	S	S
<b>Grille</b> – chrome surround	S	S	S	–
<b>Grille</b> – SS specific	–	–	–	S
<b>Mirrors</b> – power remote control	S	S	–	S
<b>Mirrors</b> – power remote control, heated	–	–	S	0 <sup>4</sup>
<b>Mouldings</b> – bodyside and rocker, charcoal	S	S	–	–
<b>Mouldings</b> – bodyside and rocker, body-colour	–	–	S	S
<b>Spoiler</b> – rear deck-lid	S	S	–	–
<b>Spoiler</b> – rear deck-lid, stand-up	–	–	S	S
<b>Sunroof</b> – power, sliding glass panel with sunshade	0 <sup>5</sup>	0 <sup>5</sup>	0 <sup>6</sup>	0 <sup>6</sup>
<b>Tires</b> – P225/60R16 all-season	S	S	–	–
<b>Tires</b> – P225/55R17 all-season	–	–	S	–
<b>Tires</b> – P235/50R18 all-season	–	–	–	S

EXTERIOR (continued)	LS	LT	LTZ	SS
<b>Wheels</b> – 16" x 6.5" steel, bolt-on wheel covers (A) <sup>7</sup>	S	–	–	–
<b>Wheels</b> – 16" x 6.5" 5-spoke styled aluminum (B) <sup>7</sup>	–	S	–	–
<b>Wheels</b> – 17" x 6.5" machined aluminum (C) <sup>7</sup>	–	–	S	–
<b>Wheels</b> – 18" x 7" machined aluminum (D) <sup>7</sup>	–	–	–	S
<b>Wheels</b> – 18" x 7" bright polished aluminum	–	–	–	0
<b>Wheels</b> – 17" x 6.5" forged polished aluminum (E) <sup>7</sup>	–	0*	0*	–
<b>Wheels</b> – 18" x 8" chromed, five-triangular double-spoke (F) <sup>7</sup>	–	–	–	0*
<b>Windshield wipers</b> – 2-speed with variable delay (intermittent)	S	S	S	S

INTERIOR	LS	LT	LTZ	SS
<b>Accents</b> – brushed sterling	S	S	S	–
<b>Accents</b> – techno steel	–	–	–	S
<b>Air conditioning</b> – manual	S	–	–	–
<b>Air conditioning</b> – manual, dual zone	–	S	S	S
<b>Cargo convenience net</b>	S	S	S	S
<b>Console</b> – front floor with armrest, storage, cupholders	S	S	S	S
<b>Cruise control</b> – steering wheel-mounted, electronic with resume, coast and decelerate/accelerate features	S	S	S	S
<b>Defogger</b> – electric rear-window	S	S	S	S
<b>Floor mats</b> – front and rear, carpeted	S	S	S	S
<b>Heater ducts</b> – rear seat, floor	S	S	S	S
<b>Instrumentation</b> – analogue gauges (includes speedometer, tachometer coolant temperature and fuel gauge) and Driver Information System (includes system problem notification, low oil pressure, GM Oil Life System, low oil level, low fuel level, low washer fluid level and trunk open indicators)	S	S	S	S
<b>Instrumentation</b> – Deluxe Driver Information System (includes exterior temperature and compass)	0	S	S	S
<b>Instrumentation</b> – tire inflation monitoring system	–	–	S	S
<b>Lights</b> – courtesy, delayed illuminated entry/exit, theatre dimming, front reading, rear courtesy/reading and trunk	S	S	S	S
<b>Mirror</b> – rear-view, electrochromic auto-dimming with dual reading lights	–	–	S	0 <sup>4</sup>
<b>Retained accessory power</b>	S	S	S	S
<b>Steering column</b> – tilt adjustable	S	S	S	S
<b>Steering wheel</b> – leather-wrapped with sound system controls	0 <sup>8</sup>	S	S	S
<b>Sunshades</b> – LH and RH padded with extensions; vanity mirrors	S	S	–	–
<b>Sunshades</b> – LH and RH padded with extensions; illuminated vanity mirrors	–	–	S	S
<b>Trunk</b> – release, power remote	S	S	S	S
<b>Windows</b> – power, driver's express-down feature and passenger window lock-out features	S	S	S	S
<b>Mirror Package</b> – includes interior rear-view mirror with electrochromic auto-dimming feature, dual reading light and heated exterior power remote control mirrors	–	–	–	0

SEATS	LS	LT	LTZ	SS
<b>Cloth reclining front bucket seats</b> – with manual driver lumbar	S	S	S	S
<b>Reclining front bucket seats with heated leather seating surfaces</b>	–	–	0	0
<b>Power 6-way driver adjuster</b>	S	S	S	S
<b>Seatback</b> – rear, 60/40 split-folding with centre-folding armrest	S	S	S	S

1 Included with available anti-lock braking system (ABS).

2 Includes full-function traction control.

3 Requires Deluxe Driver Information Centre.

4 Included with Mirror Package.

5 Includes universal home remote and illuminated vanity mirrors.

6 Includes universal home remote.

7 Wheels shown on page 15.

8 Included with AM/FM stereo CD player and MP3 playback sound system.

9 Includes leather-wrapped steering wheel with sound system controls.

\* Interim availability. Regular production accessory, dealer-installed.

## SOUND SYSTEMS

	LS	LT	LTZ	SS
All Monte Carlo sound systems include an electronically tuned Delco AM/FM stereo with seek up/down, scan, auto tone control, speed-compensated volume control, auxiliary input jack, digital clock and Theftlock.				
AM/FM stereo with CD player	S	-	-	-
AM/FM stereo with CD player, MP3 playback and Radio Data System (RDS)	0 <sup>a</sup>	S	S	S
AM/FM stereo with 6-disc in-dash CD changer, MP3 playback and Radio Data System (RDS)	0 <sup>a</sup>	0	0	0
6-speaker sound system	S	S	S	-
8-speaker Bose Premium sound system	-	0	0	S

S - Standard. 0 - Optional individually or in combination with other optional equipment.

## A WORD ABOUT THIS BROCHURE

Some of the equipment shown or described throughout this brochure may be available at extra cost. We have tried to make this brochure comprehensive and factual. We reserve the right, however, to make changes at any time, without notice, in prices, colours, materials, equipment, specifications, models and availability. Specifications, dimensions, measurements, ratings and other numbers in this brochure and other printed materials provided at the dealership or affixed to vehicles are approximates based upon design and engineering drawings and prototypes and laboratory tests. Your vehicle may differ due to variations in manufacture and equipment. Since some information may have been adapted since the time of the printing, please check with your Chevrolet dealer for complete details. General Motors of Canada Limited reserves the right to lengthen or shorten the model year for any product, for any reason, or to start and end model years at different times.

## PRIVACY STATEMENT

At General Motors of Canada Limited ("GM Canada") we respect your privacy and value our relationship with you. Your personal information will be protected, will never be sold, and will be used only by GM Canada, our affiliates, dealers/retailers, and service suppliers (only to provide services). If you wish to be removed from GM Canada marketing communications; would like to limit only certain marketing communications from us; would like a listing of our specific uses or further information about those with whom your information is shared; or for further information about our Privacy Policy and practices, please contact us at 1-800-GM-DRIVE (1-800-463-7483) or through our Web site at [gmcanda.com](http://gmcanda.com)

## A WORD ABOUT ASSEMBLY

Chevrolets are equipped with engines and components produced and assembled by different operating units of General Motors, its subsidiaries and suppliers and these engines and components may change or be obtained from different sources from time to time. All such engines and components are approved for use in Chevrolets. Certain equipment ordered may be unavailable at the time of assembly and we suggest that you verify that your vehicle includes the equipment you ordered, or if there are changes, that they are acceptable to you.

## TRADEMARK

The marks appearing in this Chevrolet Monte Carlo brochure including, but not limited to: General Motors, GM, the GM Canada emblem, the GM Canada Web site address, Chevrolet, the Chevrolet emblem, Aveo, Cobalt, Corvette, Epica, HHR, Impala, Malibu, Malibu Maxx, Monte Carlo, Optra, Uplander, and their respective logos, emblems, slogans and vehicle model names and body designs; and other marks such as Delco, SMARTLEASE, Solar-Ray and TOTAL Warranty are trademarks of General Motors Corporation and/or General Motors of Canada Limited, its subsidiaries, affiliates or licensors.

GMAC is a registered trademark of the General Motors Acceptance Corporation.

OnStar, the OnStar logo and the OnStar button are registered trademarks of the OnStar Corporation.

PASS-Key III+ and TheftLock are registered trademarks of Delphi Automotive Systems.

Bose is a registered trademark of the Bose Corporation.

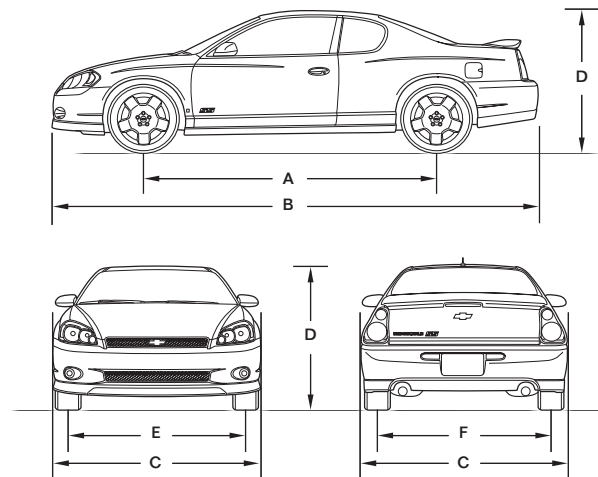
Radio Data System (RDS) is a registered trademark of the U.S. National Association of Broadcasters.

## COPYRIGHT

© Copyright 2005 General Motors of Canada Limited. All Rights Reserved. All text, images, graphics, and other materials in this Chevrolet Monte Carlo brochure are subject to the copyright and other intellectual property rights of General Motors Corporation and/or General Motors of Canada Limited. These materials may not be reproduced, distributed or modified without the express written permission of General Motors Corporation and/or General Motors of Canada Limited.

Printed in Canada, August 2005.

## DIMENSIONS



## EXTERIOR, mm (in.)

Wheelbase (A)	2807 (110.5)
Length (B)	4995 (196.7)
Width (C)	1851 (72.9)
Height (D)	1418 (55.8)
Front tread (E)	1586 (62.4)
Rear tread (F)	1562 (61.5)

## INTERIOR, mm (in.) front/rear

Headroom	968/927 (38.1/36.5)
Legroom	1077/909 (42.4/35.8)
Shoulder room	1481/1448 (58.3/57.0)
Hip room	1402/1410 (55.2/55.5)

## CAPACITIES/WEIGHT

Trunk, L (cu. ft.)	447 (15.8)	
Fuel tank, L (imp. gal.)	66 (14.5)	
Curb weight (est.), kg. (lb.)	Monte Carlo LS	1521 (3354)
	Monte Carlo LT	1540 (3396)
	Monte Carlo LTZ	1562 (3443)
	Monte Carlo SS	1582 (3489)

## TOWING

3.5L V6 VVT 2.86 final drive ratio; 454 kg (1000 lb.) maximum gross trailer weight\*

3.9L V6 VVT 3.29 final drive ratio; 454 kg (1000 lb.) maximum gross trailer weight\*

5.3L V8 2.93 final drive ratio; 454 kg (1000 lb.) maximum gross trailer weight\*

\*When properly equipped, includes weight of trailer, cargo, passengers and equipment. All towing recommendations are subject to change. Trailer tongue load should be 10% of the maximum trailer weight but should not exceed the load rating specified for that vehicle, engine or hitch combinations. See your dealer or refer to the Monte Carlo Owner's Manual for details.

# COLOURS, FABRICS & WHEELS

41  
Black

74  
Victory Red

42  
Dark Silver  
Metallic\*

40  
White

53  
Amber Bronze  
Metallic\*

22  
Superior Blue  
Metallic\*

Colours may not be exactly as illustrated due to restrictions of the printing process. Please see your Sales Consultant for specific colour and model availability.

## WHEELS



A.

B.

C.

D.

E.

F.



63  
Sport Red  
Metallic\*

67  
Silverstone  
Metallic

21  
Laser Blue  
Metallic

#### EXTERIOR/INTERIOR COLOUR COMPATIBILITY

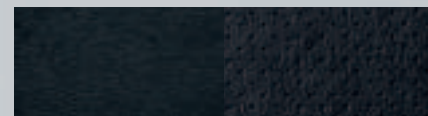
▼ EXTERIOR	INTERIOR ►	19 – EBONY	52 – NEUTRAL	83 – GRAY*	84 – GRAY/EBONY**
21 – LASER BLUE METALLIC		•	•	•	•
21/67 – LASER BLUE METALLIC/ SILVERSTONE METALLIC**		•			•
22 – SUPERIOR BLUE METALLIC*		•	•	•	•
40 – WHITE		•	•	•	•
40/67 – WHITE/SILVERSTONE METALLIC**		•			•
41 – BLACK		•	•	•	•
41/67 – BLACK/SILVERSTONE METALLIC**		•			•
42 – DARK SILVER METALLIC*		•	•	•	•
53 – AMBER BRONZE METALLIC*		•	•	•	•
63 – SPORT RED METALLIC*		•	•	•	•
67 – SILVERSTONE METALLIC		•	•	•	•
74 – VICTORY RED		•	•	•	•
74/67 – VICTORY RED/ SILVERSTONE METALLIC**		•			•

\*Not available on Monte Carlo SS.  
\*\*Available on SS only.

#### INTERIOR FABRICS



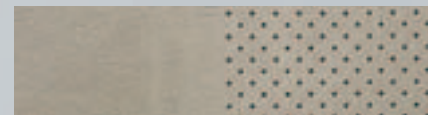
19B – Ebony Cloth



192 – Ebony Leather



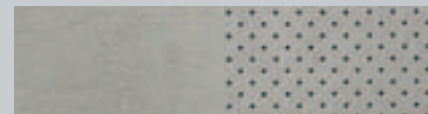
52B – Neutral Cloth



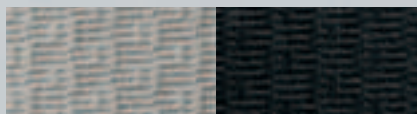
522 – Neutral Leather



83B – Gray Cloth\*



832 – Gray Leather\*



84B – Gray/Ebony Cloth\*\*



842 – Gray/Ebony Leather\*\*

- A. 16" bolt-on wheel cover
- B. 16" 5-spoke styled aluminum wheel
- C. 17" machined aluminum wheel
- D. 18" machined aluminum wheel
- E. 17" forged polished aluminum wheel<sup>1</sup>
- F. 18" chromed, five-triangular double-spoke wheel<sup>1</sup>

<sup>1</sup>Interim availability. Regular production accessory, dealer-installed.



AVEO

## A STORY ONLY GENERAL MOTORS CAN TELL.

General Motors' commitment to setting the highest standards in quality, safety, innovation, and fuel efficiency are matched by an equally strong commitment to the community.

### DID YOU KNOW?

**QUALITY:** GM plants swept the J.D. Power Initial Quality Study<sup>SM\*</sup> rankings for North and South America: Gold and Silver Plant Quality Awards for the Canadian Oshawa #2 and #1 car plants, in addition to the Bronze Plant Quality Award for the Hamtramck, Michigan plant.

**SAFETY:** General Motors is the only automotive manufacturer committed to offering a full range of cars, trucks, and SUVs that provide safety protection before, during and after a collision. GM vehicles are equipped with a range of features and technologies that help drivers avoid collisions, reduce the risk of injury should a collision prove unavoidable, and help you get the assistance you need after a collision.

**INNOVATION:** GM is at the forefront of automotive technology with breakthrough features such as OnStar and XM Satellite Radio.

**FUEL EFFICIENCY:** GM offers more cars than any other automaker in Canada that get better than 7.0 L/100 km in highway driving. GM has also won more EnerGuide fuel-efficiency awards than any other car company.

### GM IS COMMITTED TO CANADA.

**INVESTMENT:** GM invests more in Canada than any other car company: The \$2.5 billion Beacon Project represents the largest automotive investment in Canadian history.

**EMPLOYMENT:** GM directly employs over 20,000 people in Canada – more than any other car company.

**DESIGN:** GM is the only car company that designs, engineers and builds cars in Canada.

### GM IS BEHIND YOU AND YOUR VEHICLE.

GM is equally comprehensive in the way it backs its Chevrolet vehicles. All Chevrolet models include:

- 3-year/60,000 km\*\* complete vehicle repair coverage
- 6-year/160,000 km\*\* corrosion perforation coverage
- 8-year/130,000 km\*\* coverage on catalytic converters and powertrain control modules (PCMs)
- 3-year/60,000 km\*\* 24-hour Roadside Assistance.

\*General Motors Corporation – Oshawa #2 (Ontario – Car) was the highest ranked plant, Oshawa #1 (Ontario) was the second ranked plant and Hamtramck, MI was the third ranked plant in North/South America among plants producing vehicles for the U.S. market in J.D Power and Associates 2005 U.S. Initial Quality Study<sup>SM</sup>. Study based on a total of 62,251 U.S. consumer responses indicating owner reported problems during the first 90 days of ownership. [www.jdpower.com](http://www.jdpower.com)

\*\*Whichever comes first.



OPTRA



COBALT



EPICA



MALIBU & MALIBU MAXX



IMPALA



MONTE CARLO



HHR



UPLANDER



CORVETTE



Canada 

CHEVROLET PONTIAC BUICK GMC CADILLAC SATURN SAAB HUMMER

CHEVROLET  FOR ALL LIFE'S ROADS

[gmcanada.com](http://gmcanada.com)

