

2013  
**CRUZE**







# *Seven billion people. One road.*

Movement is the universal language of personal freedom. Our founder Louis Chevrolet spoke it fluently. As a Swiss immigrant, he came to America with a dream of racing cars. He wished for everyone – not just the rich or entitled – to experience the exhilaration he felt behind the wheel.

In 1911, he began building his first car. One hundred years later, a new Chevrolet is sold every 6.6 seconds. That amounts to 4.76 million vehicles in more than 140 countries – more than Louis Chevrolet could ever have imagined.

The depth of our heritage and passion is evident in everything we do here at Chevrolet. It's ingrained in the bold design, spirited performance, proven durability and exceptional value our drivers enjoy. It empowers us to be leaders in innovation. And it inspires us to continuously raise the bar – today, tomorrow and into what promises to be a bright future.

Currently, we are pioneering new propulsion technologies to meet the demanding energy and environmental needs of a global automotive brand. We're also employing alternative energy sources and investing in fuel-saving technologies to help reduce our carbon footprint with the goal of reducing 8 million metric tons of carbon dioxide emissions over the next few years.

Our global reach is expanding, yet our mission remains the same. We want every customer to feel like family – no matter where you are in the world. And no matter where you're going, we want you to enjoy the ride in a Chevrolet.


From the vision of one to the journey of many, Chevy Runs Deep.





Cruze ILT shown in Victory Red  
with available RS Appearance Package.





Cruze Eco shown in  
Crystal Red Tintcoat (extra-cost color).

# MPG GO-GETTER

## **CRUZE ECO OFFERS YOU 42 MPG HIGHWAY<sup>1</sup>**

You know where you want to go. Cruze just gives you more to go with. By offering the best highway mileage of any gas engine in America, Cruze inspires you to go anywhere you want. From intuitive technology to impressive performance, Cruze is stylishly integrated with unexpected ingenuity that continues to surprise. Along with more standard safety features than any other car in its class,<sup>2</sup> and with more highway miles per gallon, Cruze Eco gives you more of everything you love about driving. In the 2013 Cruze, you are on your way.

<sup>1</sup> EPA estimated. <sup>2</sup> Based on GM Compact Car segment.



Cruze LTZ interior shown in Cocoa/Light Neutral with leather-appointed seats and available features.



# STYLING & PROFILING



## **BEAUTY IS IN THE EYE OF THE KEY HOLDER**

One look and you're drawn in. Cruze takes a natural bold stance that demands attention. The overall body design has a rich and expansive look that's innately timeless, and the angular positioning projects aerodynamics. Welcoming admiration, the swept-back headlamps lead the eye past the fenders and across the sculpted angles, especially to the front end where the Chevrolet grille stands strong and confident. Cruze will not only turn heads, but stop you — the gawking alone may cause gridlock. We apologize in advance.

Cruze LTZ shown in Blue Topaz Metallic.

# YOUR ENTERTAINMENT DESTINATION



## AVAILABLE CHEVROLET MYLINK

Your music. Your smartphone. Your life. Even how you choose to control them: voice recognition via Nuance,<sup>®</sup> push-button controls, the 7-inch diagonal color touch-screen or the steering wheel-mounted controls. Available on 1LT and standard on 2LT, LTZ and Eco models, Chevrolet MyLink<sup>1</sup> helps bring it all together.

Get instant access to a world of music, whether it's from the library on your USB device<sup>2</sup> or from a 3-month trial of SiriusXM Satellite Radio.<sup>3</sup> Integrate your compatible smartphone to stream Pandora Internet Radio<sup>®</sup> and Stitcher SmartRadio.<sup>™4</sup> Keep your music organized with Gracenote.<sup>®</sup> Enjoy hands-free calling — the contacts from your compatible smartphone can be fully synchronized. Use convenient voice commands or buttons to make and receive calls, and view your contacts and recent calls on the touch-screen.

<sup>1</sup> MyLink functionality varies by model. Full functionality requires compatible Bluetooth and smartphone, and USB connectivity for some devices. <sup>2</sup> Not compatible with all devices. <sup>3</sup> If you subscribe after your trial period, subscriptions are continuous until you call SiriusXM to cancel. See SiriusXM Customer Agreement for complete terms at [siriusxm.com](http://siriusxm.com). Other fees and taxes may apply. All fees and programming subject to change. For more information about NavTraffic, visit [siriusxm.com/navtraffic](http://siriusxm.com/navtraffic). XM satellite service is available only in the 48 contiguous United States and Washington, D.C. <sup>4</sup> Data plan rates apply.





## AT YOUR SERVICE: THE NAVIGATION STATION

Cruze offers available Chevrolet MyLink<sup>1</sup> Radio with Navigation (as shown), which adds full-color 2-D/3-D maps, points of interest and real-time traffic updates through a 3-month trial of SiriusXM NavTraffic.<sup>2</sup> And of course, all Cruze models have OnStar<sup>®</sup> Turn-by-Turn Navigation,<sup>3</sup> which comes standard for six months. Simply push the blue OnStar button and get unlimited voice-guided directions with visuals displayed through the Driver Information Center in the gauge cluster. If you opt for Chevrolet MyLink,<sup>1</sup> OnStar directions are displayed on the 7-inch diagonal color touch-screen.



## CONNECT WITH CONVENIENCE

The standard USB port<sup>4</sup> allows quick and convenient access to music on your USB device. You can even listen to the music library stored on your compatible smartphone. Or link up your iPhone<sup>®</sup> or iPod<sup>®5</sup> and use the steering wheel-mounted controls to play your favorite songs. Connecting is easy and seamless.



## AVAILABLE 250-WATT PIONEER PREMIUM SOUND SYSTEM

High-frequency tweeters, live staging center-channel speaker and two 6"x9" subwoofers deliver sound quality that's clean and powerful. Just Cruze and jam to it.

<sup>1</sup> MyLink functionality varies by model. Full functionality requires compatible Bluetooth and smartphone, and USB connectivity for some devices. <sup>2</sup> If you subscribe after your trial period, subscriptions are continuous until you call SiriusXM to cancel. See SiriusXM Customer Agreement for complete terms at [siriusxm.com](http://siriusxm.com). Other fees and taxes may apply. All fees and programming subject to change. For more information about NavTraffic, visit [siriusxm.com/navtraffic](http://siriusxm.com/navtraffic). XM satellite service is available only in the 48 contiguous United States and Washington, D.C. <sup>3</sup> Visit [onstar.com](http://onstar.com) for coverage map, details and system limitations. <sup>4</sup> Not compatible with all devices. <sup>5</sup> iPhone and iPod are trademarks of Apple Inc., registered in the U.S. and other countries. <sup>6</sup> Data plan rates apply.





## ONSTAR REMOTELINK MOBILE APP

Now you can remotely lock and unlock your vehicle and even start your engine<sup>1</sup> from your smartphone. View real-time vehicle diagnostics including fuel, remaining oil life and tire pressure with the OnStar<sup>®</sup> RemoteLink<sup>™</sup> mobile app.<sup>2</sup>



Available on the  
App Store

## MYCHEVROLET MOBILE APP

With the myChevrolet<sup>3</sup> mobile app, there are even more ways to conveniently connect to your Cruze. Schedule a service appointment online. View the Owner's Manual. Even create a reminder — with a mark on the map and a photo of where your Cruze is parked. The myChevrolet<sup>3</sup> mobile app adds function to your smartphone and convenience to your day.

<sup>1</sup> Requires available 6-speed transmission and available remote vehicle starter system. <sup>2</sup> Available on select iPhone, Android and BlackBerry devices. Services vary by phone, vehicle and conditions. Requires active OnStar subscription, which is standard for six months. <sup>3</sup> Requires iPhone or Android platform.

iPhone is a trademark of Apple Inc., registered in the U.S. and other countries. App Store is a service mark of Apple Inc.



Cruze 2LT shown in Silver Ice Metallic with available RS Appearance Package.





# SPACE SOLVERS

## STACK IT, FLIP IT, PULL IT DOWN

Cruze is a compact car, but it doesn't skimp on space. You'll see. It has more passenger room than Ford Focus Sedan and Toyota Corolla. And when we think about cargo space, one thing comes to mind: More. With 15.0 cu. ft. of resourceful cargo space and a 60/40 split-folding rear seat, it's easy to store awkward items. Cruze just fits — you and your life. So stretch out and enjoy the ride. Cruze has it all figured out.

Cruze 2LT shown in Silver Ice Metallic with available RS Appearance Package.





# PROTECTIVE INSTINCTS



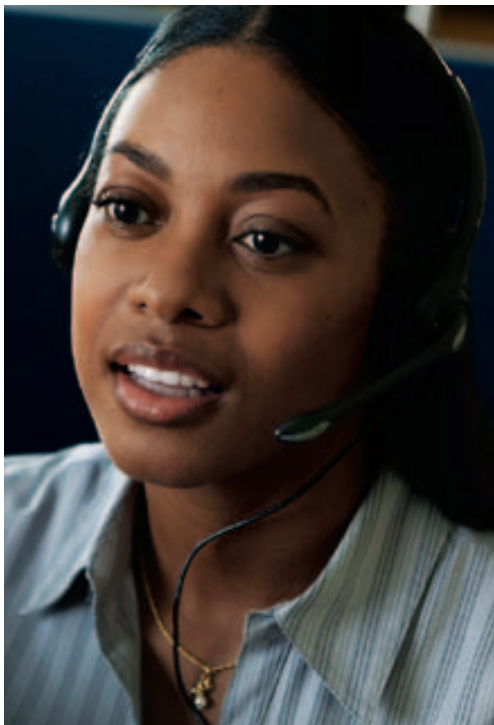
## STABILITRAK

The StabiliTrak® Electronic Stability Control System helps assist you with directional control of the vehicle in difficult driving conditions. Sensors continually monitor the path being steered and the direction in which the vehicle is actually turning. If StabiliTrak detects a difference, it selectively applies brake pressure to the appropriate wheel to help move the vehicle back to the path being steered.

## DETECT. REACT. PROTECT.

What makes Cruze such a great protector is its instinctive nature. Some of us refer to it as a gut reaction — an instant response that helps keep us safe. And since cars don't have guts, we gave Cruze features to work as if it does. Inside, outside and all around, Cruze is equipped with numerous safety features that you can rely on to react quickly to help you avoid trouble.





### SIDE BLIND ZONE ALERT<sup>1</sup>

This available feature uses radar sensors on both sides of the vehicle – it's like having an extra pair of eyes. The system “looks” for other vehicles in the blind zone areas and alerts the driver to their presence.



### ONSTAR<sup>2</sup>

OnStar, standard for six months with the Directions & Connections<sup>®</sup> Plan, features Automatic Crash Response. In many crashes, built-in vehicle sensors can automatically alert an OnStar Advisor who is immediately connected into your vehicle to see if you need help.



### 10 STANDARD AIR BAGS<sup>3</sup>

All Cruze models feature frontal and knee air bags for driver and front passenger, head-curtain side-impact air bags for front and rear outboard passengers, and front and rear seat-mounted air bags to further help protect outboard passengers.



### REAR CROSS-TRAFFIC ALERT

This available feature warns the driver of oncoming vehicles when traveling in reverse, such as backing out of a parking spot – including angled parking. Visual and audible alerts are triggered if moving vehicles are detected.

<sup>1</sup> Before making a lane change, always check the Side Blind Zone Alert display, check the side and inside rearview mirrors, look over your shoulder for vehicles and hazards, and activate the turn signal. <sup>2</sup> Visit [onstar.com](http://onstar.com) for coverage map, details and system limitations. Services vary by model and conditions. OnStar acts as a link to existing emergency service providers. <sup>3</sup> Air bag inflation can cause severe injury or death to anyone too close to the air bag when it deploys. Be sure every occupant is properly restrained. Always use safety belts and the correct restraint for your child's age and size. Even in vehicles equipped with the Passenger Sensing System, children are safer when properly secured in a rear seat in the appropriate infant, child or booster seat. Never place a rear-facing infant restraint in the front seat of any vehicle equipped with a passenger air bag. See the Owner's Manual and the child safety seat instructions for more safety information.



# BRAVO

## RAZOR-SHARP HANDLING, CUTTING-EDGE PERFORMANCE

With the available 18-inch wheel and tire combination, you get a one-two punch when it comes to performance. The available Z-link rear suspension provides a solid, sturdy and sporty driving experience, making Cruze just as responsive as it is impressive. Encore.



### TURBOCHARGED LIFESTYLE

More power to you. The available ECOTEC® 1.4L turbocharged engine delivers 148 lb.-ft. of torque and 138 horsepower. The turbocharger increases engine power, allowing for a more robust driving experience. With Cruze you get pronounced power, stimulating performance and just maybe a standing ovation.



### 6-SPEED TRANSMISSIONS

The standard 6-speed manual provides multiple overdrive gears that give a riveting boost with every shift. And with the available 6-speed automatic, all you feel is the smooth ride that Cruze offers as you shift forward. So either way, these 6-speed transmissions deliver the power and grace that put you ahead of the rest. Take a bow.

AUTOMATIC



MANUAL

### DRIVER SHIFT CONTROL

Up the performance with the available 6-speed automatic, and you'll feel all the power Cruze has to offer, thanks to Driver Shift Control which allows the driver to switch from automatic to high-performance manual operation. Once the driver moves the gearshift lever into Driver Shift Control mode, a quick tap is all that's required for smooth, crisp shifts.

Cruze LTZ shown in Silver Ice Metallic with available RS Appearance Package.





Cruze Eco shown in  
Crystal Red Tintcoat (extra-cost color).



# MORE MILES PER GALLON



## LET IT BE YOUR MOTIVATION

You already have the drive. Sometimes all you need is more miles per gallon to finally arrive. Cruze Eco offers the best highway fuel economy of any gas engine in America with 42 MPG highway.<sup>1</sup> And because we don't want anything dragging you down, we've switched to lighter-weight wheels and ultra-low rolling resistance tires and lowered the ride height for enhanced aerodynamics. By incorporating smooth underbody panels, a spoiler and a lower front grille air shutter that closes at high speeds, air resistance decreases so there's nothing in the way of you reaching your destination. As long as you keep driving, we'll help keep you on the move.

<sup>1</sup> EPA estimated.





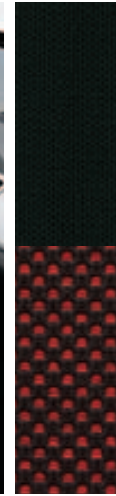
Jet Black/Medium Titanium-Color  
Premium Cloth<sup>1</sup>



Jet Black  
Premium Cloth<sup>2</sup>



Medium Titanium-Color  
Premium Cloth<sup>2</sup>



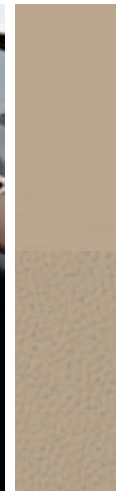
Jet Black/Sport Red  
Premium Cloth<sup>2</sup>



Jet Black  
Leather Appointments<sup>3</sup>



Jet Black/Brick  
Leather Appointments<sup>3</sup>



Cocoa/Light Neutral  
Leather Appointments<sup>3</sup>

<sup>1</sup> Standard on LS. <sup>2</sup> Standard on ILT and Eco (ILT shown). <sup>3</sup> Standard on 2LT and LTZ (2LT shown).





Black Granite Metallic<sup>1</sup>



Blue Topaz Metallic<sup>2</sup>



Atlantis Blue Metallic



Crystal Red Tintcoat<sup>1,3,4</sup>



Victory Red<sup>3,4,5</sup>



Autumn Metallic<sup>2</sup>



Champagne Silver Metallic



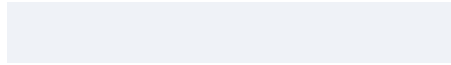
Cyber Gray Metallic



Silver Ice Metallic



Summit White



16" Silver-Painted  
Wheel Cover  
(standard on LS)



16" 5-Spoke  
Machined-Face Alloy Wheel  
(standard on 1LT)



17" 15-Spoke  
Forged-Aluminum Wheel  
(standard on Eco)



17" 5-Spoke  
Flangeless Alloy Wheel  
(standard on 2LT)



18" Split 5-Spoke  
Silver-Painted Alloy Wheel  
(standard on LTZ)

<sup>1</sup> Extra-cost color. <sup>2</sup> Not available with Jet Black/Sport Red interior. <sup>3</sup> Not available on LS. <sup>4</sup> Not available with Jet Black/Brick interior. <sup>5</sup> Requires available RS Appearance Package.



# SELECT VEHICLE FEATURES

## CRUZE LS



---

ECOTEC 1.8L DOHC 4-cylinder engine with 138 hp and 125 lb.-ft. of torque; 6-speed manual transmission

---

10 standard air bags<sup>1</sup>

---

StabiliTrak Electronic Stability Control System with Traction Control

---

SiriusXM Satellite Radio<sup>2</sup> with three trial months

---

OnStar<sup>3</sup> Directions & Connections Plan for six months, including Turn-by-Turn Navigation

---

USB port<sup>4</sup>

---

Bluetooth<sup>®</sup> wireless technology<sup>5</sup> for select phones

---

Vehicle theft-deterrent system with anti-theft alarm and engine immobilizer

---

Remote Keyless Entry Programmable power door locks with lockout protection and rear child safety locks

---

Carpeted front and rear floor mats



## CRUZE 1LT



---

*In addition to or replacing LS features, 1LT includes:*

---

ECOTEC 1.4L turbocharged 4-cylinder engine with 138 hp and 148 lb.-ft. of torque; 6-speed manual transmission

---

Cruise control

---

Chrome belt molding 16" 5-spoke machined-face alloy wheels

---

Leather-wrapped steering wheel with Polar Silver accents and mounted controls for audio and cruise control

---

Power-adjustable, manual-folding (body-color) outside mirrors



## CRUZE ECO



---

*In addition to or replacing 1LT features, Eco includes:*

---

6-speed manual transmission with Eco gearset

---

17" 15-spoke forged-aluminum wheels with ultra-low rolling resistance tires

---

Unique front fascia air dam, lower front grille with active air shutter and rear spoiler

---

Chevrolet MyLink<sup>6</sup> Radio with 7-inch diagonal color touch-screen



<sup>1</sup> Always use safety belts and the correct restraint for your child's age and size. Even in vehicles equipped with the Passenger Sensing System, children are safer when properly secured in a rear seat in the appropriate infant, child or booster seat. Never place a rear-facing infant restraint in the front seat of any vehicle equipped with a passenger air bag. See the Owner's Manual and the child safety seat instructions for more safety information. <sup>2</sup> If you subscribe after your trial period, subscriptions are continuous until you call SiriusXM to cancel. See SiriusXM Customer Agreement for complete terms at [siriusxm.com](http://siriusxm.com). Other fees and taxes will apply. All fees and programming subject to change. XM satellite service is available only in the 48 contiguous United States and Washington, D.C. <sup>3</sup> Visit [onstar.com](http://onstar.com) for coverage map, details and system limitations. Services vary by model and conditions. <sup>4</sup> Not compatible with all devices. <sup>5</sup> Go to [gm.com/bluetooth](http://gm.com/bluetooth) to find out which phones are compatible with the vehicle. <sup>6</sup> MyLink functionality varies by model. Full functionality requires compatible Bluetooth and smartphone, and USB connectivity for some devices.

## CRUZE 2LT



*In addition to or replacing 1LT features, 2LT includes:*

- 
- 17" 5-spoke flangeless alloy wheels

---

  - 4-wheel antilock disc brakes

---

  - Leather-appointed heated front seats

---

  - 6-way power-adjustable driver seat

---

  - Sport-tuned suspension with Z-link

---

  - Chevrolet MyLink<sup>1</sup> Radio with 7-inch diagonal color touch-screen

---

## CRUZE LTZ



*In addition to or replacing 2LT features, LTZ includes:*

- 
- 6-speed automatic transmission

---

  - Remote vehicle starter system

---

  - 18" split 5-spoke silver-painted alloy wheels

---

  - Chrome door handles

---

  - Heated outside mirrors

---

  - Auto-dimming inside rearview mirror

---

  - Illuminated visor mirrors

---

  - Uplevel instrument cluster

---

  - Rear vision camera

---

  - Keyless Access with Push-Button Start

---

  - Foglamps

---



<sup>1</sup> MyLink functionality varies by model. Full functionality requires compatible Bluetooth and smartphone, and USB connectivity for some devices.



# SPECIFICATIONS

■ STANDARD □ AVAILABLE – NOT AVAILABLE

	LS	1LT	ECO	2LT	LTZ
<b>EXTERIOR</b>					
Door handles: Body-color	■	■	■	■	–
Chrome with keyless entry buttons	–	–	–	□ <sup>1,2</sup>	■
Foglamps	–	□ <sup>3</sup>	–	□ <sup>3</sup>	■
Glass: Acoustic-laminated windshield	■	■	■	■	■
Solar-Ray® light-tinted	■	■	■	■	■
Grille: Black insert with chrome surround	■	■	■	■	■
Unique front fascia air dam and lower front grille air shutter	–	–	■	–	–
Headlamps: Halogen composite with Automatic Exterior Lamp Control	■	■	■	■	■
Mirrors: Power-adjustable, manual-folding, black	■	–	–	–	–
Power-adjustable, manual-folding, body-color	–	■	■	■	–
Power-adjustable, heated, manual-folding, body-color	–	□ <sup>4</sup>	□ <sup>4</sup>	□ <sup>4</sup>	■
<b>RS Appearance Package:</b> Unique fascias, rocker moldings, rear spoiler, foglamps with chrome trim, and uplevel instrument cluster (standard on LTZ)	–	□ <sup>5</sup>	–	□	□
<b>ENGINES/CHASSIS</b>					
Engine: ECOTEC 1.8L DOHC 4-cylinder with 138 hp and 125 lb.-ft. of torque	■	–	–	–	–
ECOTEC 1.4L turbocharged 4-cylinder with 138 hp and 148 lb.-ft. of torque	–	■	■	■	■
Steering: Power, electric-assisted, rack-mounted	■	■	■	■	■
Suspension: Front, independent MacPherson struts	■	■	■	■	■
Rear, compound crank with Z-link Sport-tuned	–	□ <sup>3</sup>	–	■	■
Transmission: 6-speed automatic; electronically controlled with overdrive	□	□	□	□	■
6-speed manual	■	■	–	■	–
6-speed manual with Eco gearset	–	–	■	–	–
<b>SAFETY &amp; SECURITY</b>					
Air bags: <sup>9</sup> Driver and front passenger frontal with Passenger Sensing System; front and rear seat-mounted side-impact, roof rail-mounted head-curtain for front and rear outboard seating positions; driver and front passenger knee	■	■	■	■	■
Brakes: 4-wheel antilock (front disc/rear drum)	■	■	■	–	–
4-wheel antilock disc	–	–	–	■	■
Daytime running lamps	■	■	■	■	■
Door locks: Power-programmable with lockout protection and rear child safety locks	■	■	■	■	■
<b>Enhanced Safety Package:</b> Rear Park Assist, Rear Cross-Traffic Alert and Side Blind Zone Alert	–	□ <sup>4,7</sup>	□ <sup>4</sup>	□ <sup>4</sup>	□

	LS	1LT	ECO	2LT	LTZ
<b>SAFETY &amp; SECURITY (CONTINUED)</b>					
OnStar® with Directions & Connections Plan for the first six months including Turn-by-Turn Navigation	■	■	■	■	■
StabiliTrak Electronic Stability Control System with Traction Control	■	■	■	■	■
Tire Pressure Monitor (excludes spare tire)	■	■	■	■	■
Vehicle theft-deterrent system with anti-theft alarm and engine immobilizer	■	■	■	■	■
<b>INTERIOR</b>					
<b>All-Star Edition:</b> Pioneer® premium sound system with nine speakers and power tilt/sliding sunroof	–	□	–	–	–
Bluetooth® wireless technology <sup>9</sup> for select phones	■	■	■	■	■
Climate control: Single-zone, manual	■	■	■	■	–
Single zone, automatic	–	–	–	–	■
Console: Center with sliding armrest, storage, front and rear 12-volt auxiliary power outlets, and dual cup holders	■	■	■	■	■
Cruise control: Steering wheel-mounted	–	■	■	■	■
Defogger: Rear window, electric	■	■	■	■	■
<b>1LT Driver Convenience Package:</b> Driver 6-way power seat adjuster with manual recliner, driver and front passenger illuminated vanity mirrors, auto-dimming inside rearview mirror and outside heated, power-adjustable mirrors	–	□ <sup>10</sup>	–	–	–
<b>Eco Driver Convenience Package:</b> Driver 6-way power seat adjuster with manual recliner, driver and front passenger illuminated vanity mirrors, auto-dimming inside rearview mirror, rear vision camera and outside heated, power-adjustable mirrors	–	–	□ <sup>10</sup>	–	–
<b>2LT Driver Convenience Package:</b> Driver and front passenger illuminated vanity mirrors, auto-dimming inside rearview mirror, rear vision camera and outside heated, power-adjustable mirrors	–	–	–	□	–
Driver Information Center: Oil-Life Monitor, Tire Pressure Monitor (excludes spare tire), outside temperature display, trip odometer and programmable menu functions	■	■	■	■	■
Floor mats: Carpeted, front and rear	■	■	■	■	■
Keyless Access with Push-Button Start	–	–	–	□ <sup>2</sup>	■
Lighting: Ambient LED backlighting on center instrument panel	■	■	■	■	■
Rear Park Assist <sup>11</sup>	–	□	□	□	□
Rear vision camera	–	□ <sup>7</sup>	□ <sup>4</sup>	□ <sup>4</sup>	■
Remote Keyless Entry	■	■	■	■	■
Remote vehicle starter system	–	□ <sup>2,4</sup>	□ <sup>2,4</sup>	□ <sup>2</sup>	■

	LS	1LT	ECO	2LT	LTZ
<b>INTERIOR (CONTINUED)</b>					
Steering column: Tilt and telescopic	■	■	■	■	■
Steering wheel: Mounted audio controls	■	■	■	■	■
Leather-wrapped with Polar Silver accents	–	■	■	■	■
Sunroof: Power, tilt/sliding	–	□ <sup>12</sup>	–	□	□
<b>Technology Package:</b> Chevrolet MyLink <sup>13</sup> Radio and rear vision camera	–	□	–	–	–
<b>SEATING</b>					
Front buckets with reclining seatbacks and adjustable head restraints; rear 60/40 split-folding seat with adjustable head restraints for outboard seating positions	■	■	■	■	■
Premium Cloth front and rear	■	■	■	–	–
Leather-appointed front and rear	–	–	–	■	■
6-way manual-adjustable driver	■	■	■	–	–
6-way power-adjustable driver	–	□ <sup>4</sup>	□ <sup>4</sup>	■	■
6-way manual-adjustable front passenger	■	■	■	■	■
Heated front seats with three warmth settings	–	–	–	■	■
<b>AUDIO SYSTEMS</b>					
AM/FM stereo, CD player, MP3 playback	■	■	–	–	–
Chevrolet MyLink <sup>13</sup> Radio: 7-inch diagonal color touch-screen; Bluetooth audio streaming; <sup>9</sup> voice recognition for phone, music and radio; smartphone compatibility for Pandora® Internet Radio and Stitcher SmartRadio™; <sup>14</sup> Gracenote® (Playlist+, Album Art); and MP3 playback	–	□ <sup>7</sup>	■	■	■
Chevrolet MyLink <sup>13</sup> Radio with Navigation: Includes above plus GPS navigation system	–	–	□	□	□
Auxiliary audio input jack	■	■	■	■	■
Pioneer premium sound system: 250-watt, 9-speaker	–	□ <sup>12</sup>	□	□	□
SiriusXM Satellite Radio <sup>15</sup> with three trial months	■	■	■	■	■
USB port <sup>16</sup>	■	■	■	■	■
<b>WHEELS</b>					
16" steel wheels with silver-painted wheel covers	■	–	–	–	–
16" 5-spoke machined-face alloy	–	■	–	–	–
17" 15-spoke forged-aluminum wheels with ultra-low rolling resistance tires	–	–	■	–	–
17" 5-spoke flangeless alloy	–	–	–	■	–
18" split 5-spoke silver-painted alloy	–	–	–	–	■
Compact spare tire and spare wheel; includes jack and lug nut wrench	■	■	□ <sup>2</sup>	■	■
Tire sealant and inflator kit	–	–	■	–	–

**1** Requires available Keyless Access with Push-Button Start. **2** Requires available 6-speed automatic transmission. **3** Requires available RS Appearance Package. **4** Requires available Driver Convenience Package. **5** Includes rear Z-link suspension with compound crank. **6** Always use safety belts and the correct restraint for your child's age and size. Even in vehicles equipped with the Passenger Sensing System, children are safer when properly secured in a rear seat in the appropriate infant, child or booster seat. Never place a rear-facing infant restraint in the front seat of any vehicle equipped with a passenger air bag. See the Owner's Manual and the child safety seat instructions for more safety information. **7** Requires available Technology Package. **8** Visit onstar.com for coverage map, details and system limitations. Services vary by model and conditions. **9** Go to gm.com/bluetooth to find out which phones are compatible with the vehicle. **10** Also includes remote vehicle starter system when available 6-speed automatic transmission is selected. **11** Requires available Enhanced Safety Package. **12** Requires available All-Star Edition. **13** MyLink functionality varies by model. Full functionality requires compatible Bluetooth and smartphone, and USB connectivity for some devices. **14** Data plan rates apply. **15** If you subscribe after your trial period, subscriptions are continuous until you call SiriusXM to cancel. See SiriusXM Customer Agreement for complete terms at siriusxm.com. Other fees and taxes will apply. All fees and programming subject to change. XM satellite service is available only in the 48 contiguous United States and Washington, D.C. **16** Not compatible with all devices.

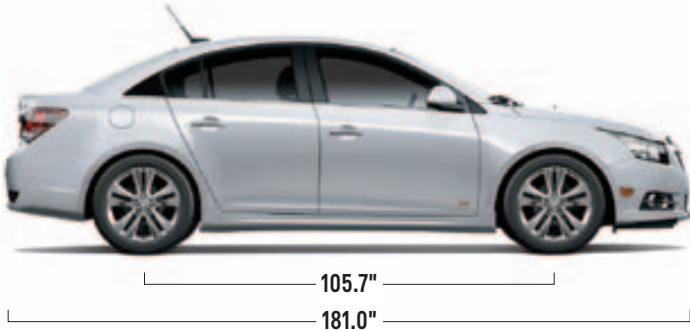
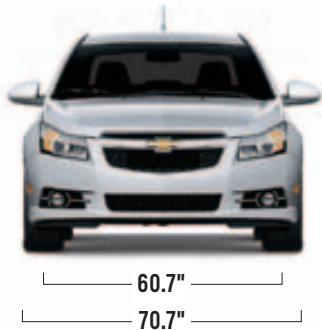


# MAXIMUM CAPACITIES

EPA-ESTIMATED FUEL ECONOMY	(Eco) 1.4L Manual	(Eco) 1.4L Automatic	(LT, LTZ) 1.4L Manual	(LT, LTZ) 1.4L Automatic	(LS) 1.8L Manual	(LS) 1.8L Automatic
	42 MPG highway/28 city/33 combined	39 MPG highway/26 city/31 combined	38 MPG highway/26 city/30 combined	38 MPG highway/26 city/30 combined	36 MPG highway/25 city/29 combined	35 MPG highway/22 city/27 combined

FUEL TANK (APPROXIMATE)	15.6 gallons (LS, LT, LTZ, Eco with 6-speed automatic) 12.6 gallons (Eco with 6-speed manual)
PASSENGER VOLUME	94.6 cubic feet/seats five
CARGO VOLUME <sup>1</sup>	LS, LT, LTZ, Eco with 6-speed automatic transmission: 15.0 cubic feet Eco with 6-speed manual transmission: 15.4 cubic feet

# DIMENSIONS



# DEALER-INSTALLED ACCESSORIES PERSONALIZE YOUR CRUZE AT CHEVY.COM/ACCESSORIES



All-Weather Floor Mats



Door Sill Plates



Splash Guards

<sup>1</sup> Cargo and load capacity limited by weight and distribution.



## WARRANTY INFORMATION

**100,000-MILE/5-YEAR TRANSFERABLE POWERTRAIN LIMITED WARRANTY.** Every 2013 Chevrolet passenger car, light-duty pickup truck, SUV and crossover comes with a 100,000-mile/5-year (whichever comes first) transferable Powertrain Limited Warranty. Plus, you get 100,000 miles/5 years (whichever comes first) of the 24/7 Roadside Assistance Program, the Courtesy Transportation Program, and much more. See dealer for details.

**NEW VEHICLE LIMITED WARRANTY.** GM vehicles registered in the USA are covered for 36,000 miles/3 years (whichever comes first). The complete vehicle is covered, including tires, towing to your nearest Chevrolet dealership and cosmetic corrosion resulting from defects. Repairs will be made to correct any vehicle defect, and most warranty repairs will be made at no charge. In addition, rust-through corrosion will be covered for 100,000 miles/6 years (whichever comes first). See dealer for details.

**CHEVROLET OWNER CENTER (GMOWNERCENTER.COM/CHEVY).** Register your vehicle with the Chevrolet Owner Center and receive benefits such as online access to your vehicle Owner's Manual, maintenance schedule reminders, service history tracking, warranty and service information, safety information, special offers and privileges, and news and events.

## IMPORTANT INFORMATION

**ENGINES.** Chevrolet products are equipped with engines produced by GM Powertrain or other suppliers to GM worldwide. The engines in Chevrolet products may also be used in other GM makes and models.

**ASSEMBLY.** Chevrolet vehicles and their components are assembled or produced by different operating units of General Motors, its subsidiaries or suppliers to GM worldwide. We sometimes find it necessary to produce Chevrolet vehicles with different or differently sourced components than originally scheduled. Since some options may be unavailable when your vehicle is assembled, we suggest you verify that your vehicle includes the equipment you ordered and that, if there were changes, they are acceptable to you.

**ONSTAR.** OnStar services require vehicle electrical system (including battery), wireless service and GPS satellite signals to be available and operating for features to function properly. OnStar acts as a link to existing emergency service providers. Subscription Service Agreement required. Call 1-888-4ONSTAR (1-888-466-7827) or visit [onstar.com](http://onstar.com) for OnStar Terms and Conditions, Privacy Policy, details and system limitations.

**A NOTE ON CHILD SAFETY.** Always use safety belts and the correct restraint for your child's age and size. Even in vehicles equipped with the Passenger Sensing System, children are safer when properly secured in a rear seat in the appropriate infant, child or booster seat. Never place a rear-facing infant restraint in the front seat of any vehicle equipped with a passenger air bag. See the Owner's Manual and child safety seat instructions for more safety information.

**IMPORTANT WORDS ABOUT THIS CATALOG.** We have tried to make this catalog comprehensive and factual. We reserve the right, however, to make changes at any time, without notice, in prices, colors, materials, equipment, specifications, models and availability. Specifications, dimensions, measurements, ratings and other numbers in this catalog and other printed materials provided at the dealership or affixed to vehicles are approximations based on design and engineering drawings, prototypes and laboratory tests. Your vehicle may differ due to variations in manufacture and equipment. Since some information may have been updated since the time of printing, please check with your Chevrolet dealer for complete details. Chevrolet reserves the right to lengthen or shorten the model year for any product for any reason or to start and end model years at different times.

Certain vehicle features may lose their usefulness over time due to obsolescence from technological changes. Unless otherwise noted, all claims based on GM Compact Car segment and latest available competitive information. Excludes other GM vehicles.

**SPARE TIRE INFORMATION.** There is no standard jack or spare tire in the 2013 Chevrolet Cruze Eco with 6-speed manual transmission. Your vehicle has a tire sealant and compressor kit that uses a liquid tire sealant to temporarily seal up to a one-quarter-inch puncture in the tread area of the tire. After using the tire inflator kit, it is recommended that you take the tire to an authorized retailer for inspection and repair as soon as possible, but at least within 100 miles of driving. The tire sealant cannot seal and inflate sidewall damage, punctures larger than one-quarter inch, or a tire that has unseated from the wheel. The sealant can only be used on one tire and for one time before its expiration date.

**FLEET ORDERS.** Some standard content may be deleted on fleet orders. See dealer for details.

**CHEVY.COM.** Offers shopping tools such as Chevy vehicle information, Build and Price, Find a Vehicle, Request Info, Email Sign-Up, Compare Vehicles, Financial Tools ... and much more.

**OWNER SERVICES.** Chevrolet is committed to enhancing the ownership experience through a wide array of programs. For more information about 24-hour Roadside Assistance, Courtesy Transportation, Customer Assistance, Chevy Safety, GM Mobility, the Chevrolet Owner Center, marketing and incentives, as well as services for GM Card members, visit [chevy.com](http://chevy.com).

**CHEVY.COM/SAFETY.** Chevrolet is committed to keeping you and your family safe—from the start of your journey to your destination. That's why every Chevrolet is designed with a comprehensive list of safety and security features to help give you peace of mind.

**GMMOBILITY.COM (1-800-323-9935).** GM Mobility™ offers financial assistance for eligible adaptive equipment to make automotive travel easier for persons with disabilities or special transportation needs. To learn more about special GM Mobility offers, visit [gmmobility.com](http://gmmobility.com).

**GMCARDMEMBERSERVICES.COM.** Did you know about the family of reward credit cards that can help you get a great deal on a new GM car, light-duty truck, SUV or crossover? With a GM reward card, you accrue earnings on every credit card purchase to use toward the purchase or lease of an eligible new GM vehicle. With three cards to choose from, you're sure to find one that suits you best.

**ECOLOGIC WINDOW LABEL.** As part of our Ecologic™ initiative for environmental responsibility, every 2013 Chevrolet vehicle features a new Ecologic window label detailing some of its fuel-saving technologies, responsible manufacturing processes and end-of-life recyclability. Visit [chevrolet.com/ecologic](http://chevrolet.com/ecologic) for more information.

GM, the GM Logo, Chevrolet, the Chevrolet Logo, and the slogans, emblems, vehicle model names, vehicle body designs and other marks appearing in this catalog are the trademarks and/or service marks of General Motors, its subsidiaries, affiliates or licensors. ©2012 OnStar. All rights reserved. Sirius, XM and all related marks and logos are trademarks of SiriusXM Radio Inc. The Bluetooth word mark is a registered trademark owned by Bluetooth SIG, Inc., and any use of such mark by Chevrolet is under license. iPhone is a negotiated trademark of Apple Inc. Pioneer is a registered trademark of Pioneer Corporation. ©2012 General Motors. All rights reserved. August 2012

## OWNERSHIP EXTRAS



[chevy.com/warranty](http://chevy.com/warranty)



**ACCESSORIES**  
[chevy.com/accessories](http://chevy.com/accessories)



[onstar.com](http://onstar.com)



[siriusxm.com](http://siriusxm.com)



[facebook.com/chevrolet](http://facebook.com/chevrolet)



[twitter.com/chevrolet](http://twitter.com/chevrolet)



[youtube.com/chevrolet](http://youtube.com/chevrolet)





Cruze Eco shown in  
Blue Topaz Metallic.



*chevy.com*