

## NISSAN INTELLIGENT MOBILITY™

Nissan Intelligent Mobility guides everything we do. We're using new technologies to transform cars from mere driving machines into assistants. Together the journey is more confident, connected, and exciting. Whether it's cars that assist in the driving task, or highways that charge your EV as you go along, it's all in the very near future. And it's a future already taking shape in the Nissan you drive today.

### SEE ARMADA® COME TO LIFE

Go to [NissanUSA.com](http://NissanUSA.com) and find an interactive brochure for Armada® and every Nissan in the lineup. Available on desktop or smartphone, it's the full product story – including demos, videos, and complete info on trims, colors, and accessories.

Or download the Interactive Brochure Hub app on your tablet. **Free on the App Store® and Google Play.™**



Innovation  
that excites

2018  
**ARMADA®**



### NISSAN ROADSIDE ASSISTANCE

Your peace of mind is on us. For 36 months or 36,000 miles, whichever comes first, your new Nissan is covered for the following:¹

- Flat-tire changes
- Trip Interruption benefits
- Jump starts
- Vehicle lockouts
- Emergency fuel delivery

Follow Nissan on:



visit [NissanUSA.com/armada](http://NissanUSA.com/armada)

¹Available services/features may be shown. Compatible connected device may be required. Only use services/features and device when safe and legal to do so. Subject to GPS and wireless network availability and connection, and system/technology limitations. Text rates/data usage/subscription may apply. Some services/features provided by companies not within Nissan or its partners' or agents' control and may be discontinued at any time. For more information, see dealer, Owner's Manual, or [NissanUSA.com/connect/important-information](http://NissanUSA.com/connect/important-information). The App Store® is a registered trademark of Apple, Inc. All rights reserved. Facebook® is a registered trademark of Facebook, Inc. Google Play™ is a trademark of Google, Inc. YouTube® is a registered trademark of Google, Inc. Twitter® is a registered trademark of Twitter, Inc.

PRINTED IN POLAND



Innovation  
that excites



**TAKE ON ADVENTURE.** Turn heads with a refined, yet unmistakable, exterior design. Attention to detail and exceptional craftsmanship greet you the moment you step inside. Plush room for up to eight and versatility? Check. Available technology that connects you to your world and helps keep an eye on your surroundings? Absolutely. And out on the road, feel in command, rain or shine, even when you're hauling up to 8,500 lbs.<sup>1</sup> The 2018 Nissan Armada.<sup>®</sup> A full-size SUV that's ready to **TAKE ON TODAY.**

Nissan Armada<sup>®</sup> Platinum Reserve shown in Pearl White.

<sup>1</sup>Towing capability varies by trim level and configuration. See Nissan Towing Guide and Owner's Manual for additional information.

Intelligent Forward Collision Warning/  
Automatic Emergency Braking



In one of the most advanced Nissan vehicles ever, you can expect confidence from an array of available Nissan Intelligent Mobility features. Whether you're keeping a safe distance from the vehicle ahead, changing lanes, or backing out of tight parking spots, these available features can help bring confidence to another level.

- Intelligent Rear View Mirror<sup>2, 4</sup>
- Intelligent Cruise Control<sup>2, 5</sup>
- Intelligent Forward Collision Warning<sup>2, 6</sup>
- Lane Departure Warning and Intelligent Lane Intervention<sup>2, 7</sup>
- Blind Spot Warning<sup>2, 8</sup>
- Intelligent Blind Spot Intervention<sup>2, 8</sup>
- Intelligent Back-up Intervention<sup>9</sup>

<sup>1</sup>Heated second-row outboard seats are an available feature. <sup>2</sup>Available feature. <sup>3</sup>Tri-Zone operation requires compatible auxiliary media system. See Owner's Manual for details. <sup>4</sup>Cannot completely eliminate blind spots. May not detect every object and does not warn of moving objects. Always check surroundings and turn to look behind you before moving vehicle. <sup>5</sup>Intelligent Cruise Control is not a collision avoidance system or warning device. Designed to use limited braking. Failure to apply the brakes could result in an accident. <sup>6</sup>FCW is intended to warn you before a collision occurs; it cannot prevent a collision. Speed and other limitations apply. See Owner's Manual for details. <sup>7</sup>LDW and ILI operate only when the lane markings are clearly visible. Speed limitations apply. See Owner's Manual for details. <sup>8</sup>Blind Spot Warning and Intelligent Blind Spot Intervention are not substitutes for proper lane change procedures. The systems will not prevent contact with other vehicles or accidents. They may not detect every vehicle or object around you. <sup>9</sup>IBI will not detect every object, and speed limitations apply. Always check surroundings and turn to look behind you before moving vehicle. <sup>10</sup>Towing capability varies by configuration. See Nissan Towing Guide and Owner's Manual for additional information.

## NISSAN INTELLIGENT REAR VIEW MIRROR

Have a full car? No problem. Just flip the switch on the Intelligent Rear View Mirror and you'll get a clear view behind you thanks to cameras installed at the rear of the vehicle. And when you're driving at night, you'll enjoy the enhanced, brighter view.<sup>2, 4</sup>



Intelligent Rear View Mirror OFF



Intelligent Rear View Mirror ON

## IMPRESSIVE COMFORT AND CAPACITY

Let the whole crew stretch out in absolute comfort with seating for up to eight - or seven with the available second-row captain's chairs. Add in an innovative climate control system that reaches every row, and every passenger can find their ideal zone.

- Heated Front and 2nd-row Seats<sup>1</sup>
- Seating for Up to 8
- Dual Zone Automatic Temperature Control
- Power Return 3rd-row Seats<sup>2</sup>
- Tri-Zone Entertainment System with Two Wireless Headsets<sup>2, 3</sup>

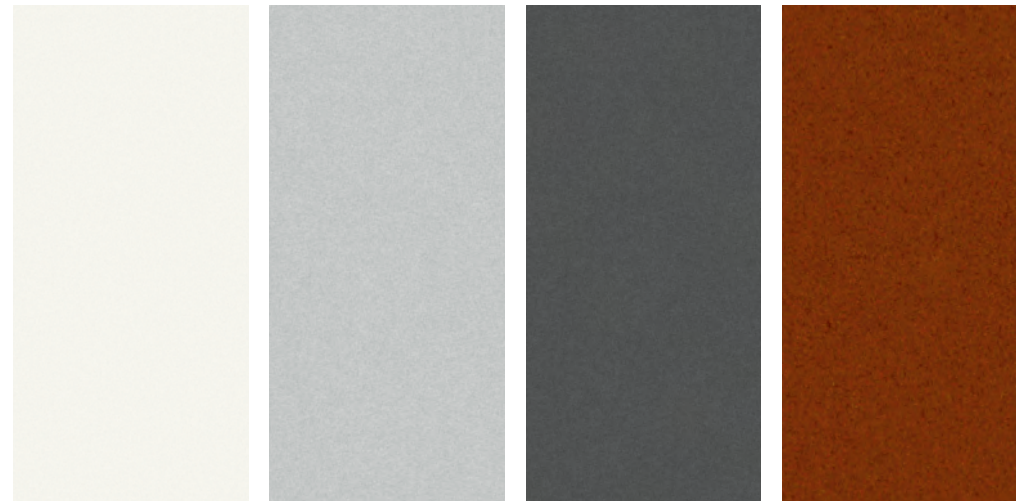


## POWERFUL V8 AND INTELLIGENT 4X4

You'll never have to leave a toy behind with a stunningly powerful Endurance® V8 engine at your command. Count on all 390 hp and 394 lb-ft of torque to make easy work out of towing up to 8,500 lbs.<sup>10</sup> And when the pavement turns to dirt, trust in Intelligent 4x4<sup>2</sup> to keep things moving.



CHOOSE YOUR COLOR



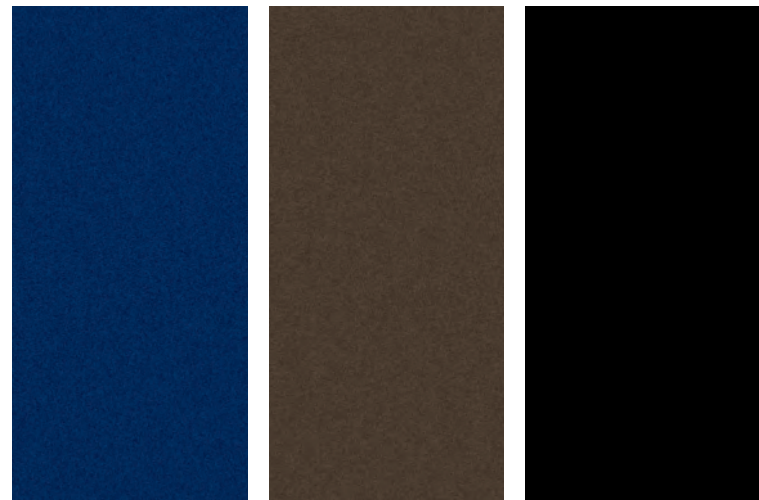
Pearl White<sup>1</sup> QAB

Brilliant Silver K23

Gun Metallic KAD

Forged Copper CAU

	SV	SL	PLATINUM	PLATINUM RESERVE <sup>2</sup>
CHARCOAL CLOTH				
ALMOND LEATHER		■	■	
CHARCOAL LEATHER		■	■	
PREMIUM BLACK/BROWN LEATHER				■



Hermosa Blue BW5

Mocha Almond CAS

Super Black KH3

	SV	SL	PLATINUM	PLATINUM RESERVE <sup>2</sup>
CHARCOAL CLOTH	■			
ALMOND LEATHER		■	■	
CHARCOAL LEATHER		■	■	
PREMIUM BLACK/BROWN LEATHER				■

■ Standard

<sup>1</sup>Extra cost option.

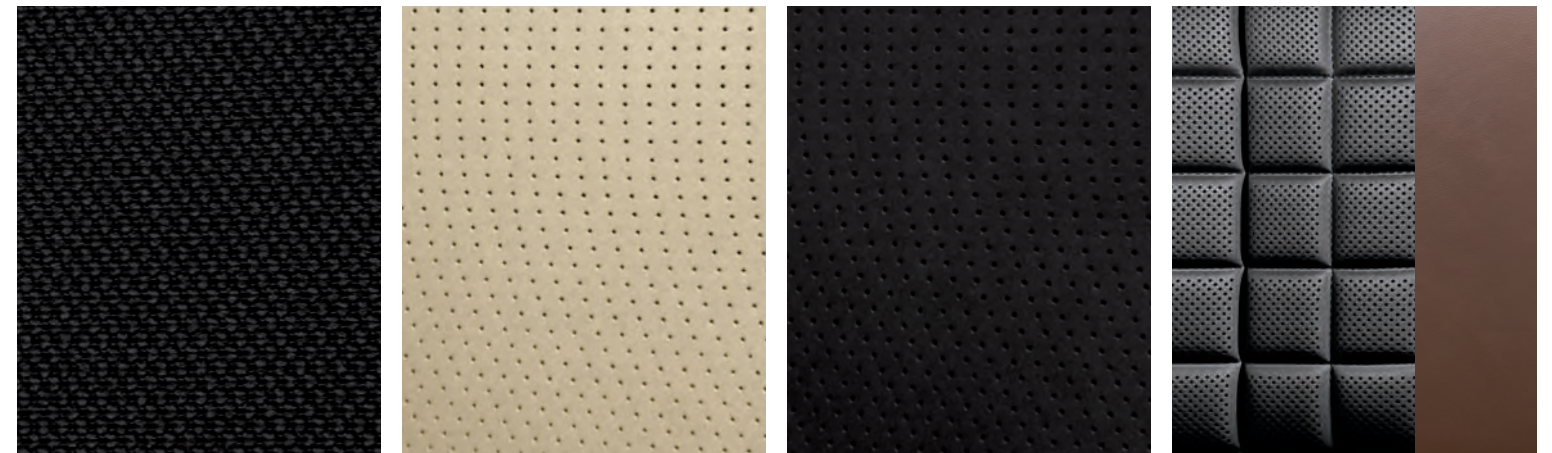
<sup>2</sup>Late availability.

Nissan has taken care to ensure that the color swatches presented here are the closest possible representations of actual vehicle colors. Swatches may vary slightly due to the printing process and whether viewed in daylight, fluorescent or incandescent light. Please see the actual colors at your local Nissan dealer.

CHOOSE YOUR INTERIOR



Nissan Armada® Platinum shown in Almond Leather.



Charcoal Cloth SV

Almond Leather SL | Platinum

Charcoal Leather SL | Platinum

Premium Black/Brown Leather Platinum Reserve<sup>2</sup>

## CHOOSE YOUR VERSION

### SV

- 390-hp Endurance® 5.6-liter V8 engine
- 7-speed automatic transmission with Tow/Haul Mode
- Standard 2WD or available Intelligent 4x4 with 2-speed transfer case
- 13.8" front and rear vented disc brakes
- 4-wheel Anti-lock Braking System (ABS)
- Electronic Brake force Distribution (EBD) with Brake Assist
- Hill start assist
- Independent double-wishbone suspension with auto-leveling rear suspension and stabilizer bars
- 18" Aluminum-alloy wheels with P265/70R18 all-season tires
- Tow hitch receiver<sup>1</sup>
- Auto-on/off headlights
- LED low-beam headlights with integrated signature
- Dark-painted roof rails and exterior trim
- Chrome grille and door handles
- Power-folding outside mirrors with turn signal indicators
- 8.0" display with multi-touch control
- Nissan Navigation System with enhanced voice recognition<sup>2</sup>
- NissanConnect® Services powered by SiriusXM<sup>3</sup>
- SiriusXM® Traffic and Travel Link with 3-year complimentary trial access<sup>3</sup>
- Hands-free Text Messaging Assistant<sup>4</sup>
- Nissan Intelligent Key® with Push Button Ignition
- Bluetooth® Hands-free Phone System<sup>3</sup>
- Dual Zone Automatic Temperature Control
- Rear air conditioning with rear controls
- RearView Monitor<sup>5</sup>
- Front and Rear Sonar System<sup>6</sup>
- Three 12-volt DC power outlets
- Cargo-area storage under rear floor<sup>7</sup>
- Eight cargo tie-down hooks<sup>7</sup>
- 10-way power driver's seat
- 8-way power front passenger's seat
- Heated front seats
- Second-row 60/40 split fold-down bench seat
- Third-row 60/40 split fold-down bench seat
- Leather-wrapped steering wheel and shift knob
- Wood-tone trim and black carpeting
- Bose® Audio System with 13 speakers
- SiriusXM® Satellite Radio<sup>3</sup> and HD Radio®
- Four USB ports<sup>8</sup>
- Nissan Advanced Air Bag System

#### AVAILABLE PACKAGE:

- Driver Package



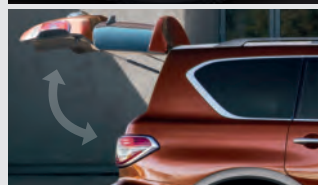
### SL

#### INCLUDES SV EQUIPMENT PLUS:

- 20" Machine-finished aluminum-alloy wheels
- P275/60R20 all-season tires
- Fog lights
- Power folding chrome outside mirrors with turn signal indicators
- Auto-dimming outside mirrors
- Heated outside mirrors with puddle lights
- Power liftgate
- Remote Engine Start System<sup>9</sup>
- Intelligent Around View® Monitor<sup>10</sup>
- Footwell lights
- Auto-dimming inside rearview mirror
- HomeLink® Universal Transceiver
- Rain-sensing wipers
- 120-volt AC power outlet
- Leather-appointed seats
- Power third-row 60/40 split fold-down bench seat
- Memory System - driver's seat, steering wheel and outside mirrors
- 7-pin wiring harness and trailer brake pre-wiring<sup>1</sup>
- Leather-appointed door trim with double stitching

#### AVAILABLE PACKAGE:

- Premium Package



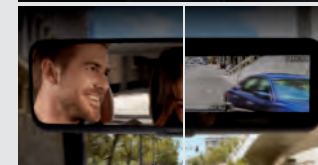
### PLATINUM

#### INCLUDES SL EQUIPMENT PLUS:

- 20" Machine-finished tinted aluminum-alloy wheels
- Power sliding moonroof with one touch open/close and tilt feature
- Climate controlled front seats (heated and cooled)
- Intelligent Cruise Control<sup>11</sup>
- Intelligent Distance Control<sup>12</sup>
- Heated leather-wrapped steering wheel
- Heated rear outboard seats
- Tri-Zone Entertainment System with dual 8.0" monitors, DVD player with remote control, two wireless headphones, and HDMI input<sup>8,13</sup>
- Intelligent Forward Collision Warning<sup>14</sup>
- Automatic Emergency Braking<sup>15</sup>
- Lane Departure Warning<sup>16</sup>
- Intelligent Lane Intervention<sup>16</sup>
- Blind Spot Warning<sup>17</sup>
- Intelligent Blind Spot Intervention<sup>17</sup>
- Intelligent Back-up Intervention<sup>18</sup>
- Intelligent Rear View Mirror<sup>5</sup>
- One additional USB port (five total)<sup>8</sup>
- Rear seat step light
- Windshield wiper de-icer

#### AVAILABLE PACKAGE:

- Captain's Chairs Package



### PLATINUM RESERVE

#### INCLUDES PLATINUM EQUIPMENT PLUS:

- Dark chrome exterior trim
- 20" Dark chrome-clad aluminum-alloy wheels
- Exclusive interior including premium two-tone leather-appointed seats with contrast stitching
- Unique open-pore wood-tone interior trim
- Platinum Reserve interior and exterior badging

#### AVAILABLE PACKAGE:

- Captain's Chairs Package

Platinum Reserve is late availability. Visit [NissanUSA.com](http://NissanUSA.com) for more information on this trim.



<sup>1</sup>Towing capability varies by trim level and configuration. See Nissan Towing Guide and Owner's Manual for additional information. <sup>2</sup>Never program while driving. GPS mapping may not be detailed in all areas or reflect current road status. <sup>3</sup>Available services/features may be shown. Compatible connected device may be required. Only use services/features and device when safe and legal to do so. Subject to GPS and wireless network availability and connection, and system/technology limitations. Text rates/data usage/subscription may apply. Some services/features provided by companies not within Nissan or its partners' or agents' control and may be discontinued at any time. For more information, see dealer, Owner's Manual, or [NissanUSA.com/connect/important-information](http://NissanUSA.com/connect/important-information). <sup>4</sup>Use the Text Messaging feature after stopping your vehicle in a safe location. If you have to use the feature while driving, exercise extreme caution at all times so full attention may be given to vehicle operation. Compatible smartphone required. Text rates and/or data usage may apply. <sup>5</sup>Parking aid/convenience feature. Cannot completely eliminate blind spots. May not detect every object and does not warn of moving objects. Always check surroundings and turn to look behind you before moving vehicle. <sup>6</sup>The Sonar System is a convenience, not a substitute for proper parking and/or backing procedures. Always check that it is safe to do so before moving vehicle. May not detect every object. <sup>7</sup>Cargo and load capacity limited by weight and distribution. Always secure all cargo. Heavy loading of the vehicle with cargo, especially on the roof, will affect the handling and stability of the vehicle. <sup>8</sup>Driving is serious business and requires your full attention. If you have to use the connected device while driving, exercise extreme caution at all times so full attention may be given to vehicle operation. External device not included. <sup>9</sup>State and local laws, regulations or ordinances may apply based on the location of the vehicle. <sup>10</sup>IAVM cannot completely eliminate blind spots and may not detect every object. IAVM operates at vehicle speeds below 5 mph. Always check surroundings and turn to look behind you before moving vehicle. <sup>11</sup>Intelligent Cruise Control is not a collision avoidance system or warning device. Designed to use limited braking. Failure to apply the brakes could result in an accident. <sup>12</sup>Intelligent Distance Control helps maintain a distance to the vehicle in front under certain conditions. Not a collision avoidance system. Failure to apply the brakes could result in an accident. <sup>13</sup>Tri-Zone operation requires compatible auxiliary media system. See Owner's Manual for details. <sup>14</sup>ICW is intended to warn you before a collision occurs; it cannot prevent a collision. Speed and other limitations apply. See Owner's Manual for details. <sup>15</sup>AEB cannot prevent accidents due to carelessness or dangerous driving techniques. It may not provide warning or braking in certain conditions. Speed and other limitations apply. See Owner's Manual for details. <sup>16</sup>LDW and ILI operate only when the lane markings are clearly visible. Speed limitations apply. See Owner's Manual for details. <sup>17</sup>Blind Spot Warning and Intelligent Blind Spot Intervention are not substitutes for proper lane change procedures. The systems will not prevent contact with other vehicles or accidents. They may not detect every vehicle or object around you. <sup>18</sup>BI will not detect every object, and speed limitations apply. Always check surroundings and turn to look behind you before moving vehicle. See Owner's Manual for details. Bluetooth® word mark and logos are owned by Bluetooth SIG, Inc., and any use of such marks by Nissan is under license. Bose® is a registered trademark of The Bose Corporation. HD Radio® is a registered trademark of iBiquity Digital Corporation. HomeLink® is a registered trademark of Gentex Corporation. The Sirius®, XM®, and SiriusXM® names and all related marks and logos are trademarks of Sirius XM Radio Inc.

CHOOSE YOUR PACKAGE



**DRIVER PACKAGE** | SV

- Fog lights
- Power liftgate
- Auto-dimming interior rearview mirror
- HomeLink® Universal Transceiver
- Power third-row 60/40 split fold-down bench seat
- 7-pin wiring harness and trailer brake pre-wiring<sup>1</sup>



Intelligent Cruise Control/  
Intelligent Distance Control

Intelligent Forward Collision Warning/  
Automatic Emergency Braking

Blind Spot Warning



**CAPTAIN'S CHAIRS PACKAGE** | PLATINUM, PLATINUM RESERVE

- Second-row fold-flat captain's chairs with padded armrests and easy entry for third row
- Second-row padded center console



**PREMIUM PACKAGE** | SL

- Intelligent Cruise Control<sup>2</sup>
- Intelligent Distance Control<sup>3</sup>
- Intelligent Forward Collision Warning<sup>4</sup>
- Automatic Emergency Braking<sup>5</sup>
- Blind Spot Warning<sup>6</sup>
- Intelligent Back-up Intervention<sup>7</sup>
- Power sliding glass moonroof with one-touch open/close and tilt feature

<sup>1</sup>Towing capability varies by trim level and configuration. See Nissan Towing Guide and Owner's Manual for additional information. <sup>2</sup>Intelligent Cruise Control is not a collision avoidance system or warning device. Designed to use limited braking. Failure to apply the brakes could result in an accident. <sup>3</sup>Intelligent Distance Control helps maintain a distance to the vehicle in front under certain conditions. Not a collision avoidance system. Failure to apply the brakes could result in an accident. <sup>4</sup>IFCW is intended to warn you before a collision occurs; it cannot prevent a collision. Speed and other limitations apply. See Owner's Manual for details. <sup>5</sup>AEB cannot prevent accidents due to carelessness or dangerous driving techniques. It may not provide warning or braking in certain conditions. Speed and other

limitations apply. See Owner's Manual for details. <sup>6</sup>Blind Spot Warning is not a substitute for proper lane change procedures. The system will not prevent contact with other vehicles or accidents. It may not detect every vehicle or object around you. <sup>7</sup>IBI will not detect every object, and speed limitations apply. Always check surroundings and turn to look behind you before moving vehicle. See Owner's Manual for details. HomeLink® is a registered trademark of Gentex Corporation.

## CHOOSE YOUR ACCESSORIES



Every Genuine Nissan Accessory is custom-fit, custom-designed and durability-tested. Each one is also backed by Nissan's 3-year/36,000-mile (whichever occurs first) limited warranty (if installed by dealer at the time of purchase).<sup>1</sup> Ask your dealer whether a specific Genuine Nissan Accessory may be financed when installed by the dealer at the time of purchase.

**A. Illuminated Kick Plates**

For a grand entrance every time.

**B. Hitch Ball Mount, Class III<sup>2</sup>**

We'll hook you up.

**C. Wireless Smartphone Charger**

Power up without plugging in.

**D. Nissan WiFi & Apps<sup>3</sup>**

Connected passengers are happy passengers.

**E. All-season Floor Mats**

Neither rain, sleet, nor snow will mess your ride.

**F. Interior Accent Lighting**

Starts every trip with a warm glow.

**G. Cargo Area Protector<sup>4</sup>**

Preserve and protect your cargo – and your Armada.

**H. Roof Rail Crossbars<sup>4</sup>**

The easy solution to bringing more.

**Additional Accessories:**

- Moonroof Wind Deflector
- Side Window Deflectors
- Chrome Side Mirror Covers
- Chrome Body Side Moldings
- Welcome Lighting
- Weight Distributing Hitch Ball Mount, Class IV<sup>2</sup>
- And More

<sup>1</sup>Genuine Nissan Accessories are covered by Nissan's Limited Warranty on Genuine Nissan Replacement Parts, Genuine NISMO® S-Tune Parts, and Genuine Nissan Accessories for the longer of 12 months/12,000 miles (whichever occurs first) or the remaining period under the 3-year/36,000-mile (whichever occurs first) Nissan New Vehicle Limited Warranty. Terms and conditions apply. See Warranty Information Booklet for details. <sup>2</sup>Towing capability varies by configuration. See Nissan Towing Guide and Owner's Manual for additional information. <sup>3</sup>Available services/features may be shown. Compatible connected device may be required. Only use services/features and device when safe and legal to do so. Subject to GPS and wireless network availability and connection, and system/technology limitations. Text rates/data usage/subscription may apply. Some services/features provided by companies not within Nissan or its partners' or agents' control and may be discontinued at any time. For more information, see dealer, Owner's Manual, or [NissanUSA.com/connect/important-information](http://NissanUSA.com/connect/important-information). <sup>4</sup>Cargo and load capacity limited by weight and distribution. Always secure all cargo. Heavy loading of the vehicle with cargo, especially on the roof, will affect the handling and stability of the vehicle.

## GENUINE NISSAN ACCESSORIES

# TURN BRAND-NEW INTO ALL YOU

For more information and to shop online for Armada® Genuine Nissan Accessories, go to [bit.ly/18armada-estore](http://bit.ly/18armada-estore)



**Nissan Armada® Platinum** shown in Pearl White with Chrome Side Moldings, Chrome Side Mirror Covers (standard on Platinum), Welcome Lighting, Fog Lights, Roof Rail Crossbars, Side Window Deflectors, and Moonroof Wind Deflector.

