



Das Auto.

2012 Jetta SportWagen





Better engineering for you.

German engineering isn't just about creating a faster car. Or a tighter ride. Or even the most fuel-efficient engine. We're not merely designing the sleekest silhouette. Or the roomiest cargo space. Or the most breathtaking sunroof. And even though we place safety at the top of our list, we're not in this solely to get recognition for our success. Or to break records. Or to add extra safety features just to be safe. At Volkswagen, we're about all of these things happening together, beautifully and precisely, to create a car that's actually fun to drive. Because we're not just making any car, we're making your car. That's the power of German engineering.

The Jetta SportWagen

Room for life.

If your life has outgrown your two-seater, but you don't want to give up your German engineering, meet the Jetta SportWagen. Equipped with either a 2.5L in-line five-cylinder or TDI® Clean Diesel engine, it's designed to hold everything you need and German-engineered to help hold you tight around corners. And the TDI engine packs an impressive range of up to 609 miles on one tank, thanks to the fuel economy of 42 hwy mpg.* So if you thought you had to bid goodbye to performance and style when you added a backseat and a wagon-sized trunk to your life, think again. The Jetta SportWagen holds it all underneath one very stylish hood.

*2011 2.0L TDI Clean Diesel, manual transmission: 30 city/42 highway mpg. EPA estimates. Range based on 42 highway mpg EPA estimate and a 14.5-gallon tank. Your mileage will vary.



TDI shown in Candy White



Performance

TDI Clean Diesel

2.5L

140 horsepower

170 horsepower

236 lbs/ft torque

177 lbs/ft torque

Mileage

42 highway miles per gallon*

Mileage

33 highway miles per gallon*

Travel

609 miles per tank*

Travel

478 miles per tank*

90% fewer sooty emissions compared to previous diesel engines

95% less sulfur content in the ultra-low-sulfur diesel fuel

Vroom to spare.

You'd like a car that's fuel efficient and powerful? Our German engineers read your mind. The TDI Clean Diesel engine sips fuel at a wallet-friendly rate of 42 hwy mpg without sacrificing one bit of turbocharged performance. It has 140 hp and 236 lbs/ft of torque for exceptional power off the line and plenty of punch to keep you going. You can even add our racing-inspired DSG® automatic transmission to take full advantage of its turbo. So if you love to drive and particularly enjoy breezing by filling stations, you and your Jetta SportWagen will get along famously.

Extra room for all your stuff requires an engine with some extra oomph. The Jetta SportWagen also offers the choice of a powerful 2.5L, 170-hp, in-line five-cylinder engine to help ensure that you and your gear get everywhere you want to go. And it comes with the option of a six-speed automatic transmission, complete with Sport mode for a little extra kick and Tiptronic® for those times when you want the thrill of shifting yourself.

*2011 2.0L TDI Clean Diesel, manual transmission: 30 city/42 highway mpg. EPA estimates. Range based on 42 highway mpg EPA estimate and a 14.5-gallon tank. 2011 2.5L, manual transmissions: 23 city/33 highway mpg. EPA estimates. Range based on 33 highway mpg EPA estimate and a 14.5-gallon tank. Your mileage will vary.

TDI shown in Reflex Silver Metallic with Base Carrier Bars and Bike Holder Attachment

Versatility

Six-way adjustable front seats with lumbar support

60/40-split folding rear seats

66.9 cubic feet of available cargo space with seats folded

Hold on to your everything.

How much room is 66.9 cubic feet of space? It's a large-screen TV, still in its box. It's four flats of herbs and flowers, a huge bag of soil, that new hose you've been wanting, and all the tools you need to start a backyard garden. It's two eager golden retrievers on their way to the park. And that's what you get when you fold down the rear seats in every Jetta SportWagen.

On the inside, the Jetta SportWagen proves that it really is a wagon. Its functional interior has rear seats that fold down in a 60/40 split, depending on your needs. Plus, if you need extra room for some blue-sky thinking, look up to find the available panoramic sunroof overhead. After all, it's not just about getting the most into your ride. It's about getting the most out of it.



SE shown in Cornsilk Beige



Comfort

The inside scoop.

The Jetta SportWagen comes with heated front seats, adjustable lumbar support, one-touch automatic window controls for all four windows, and optional V-Tex leatherette seating surfaces for a more premium experience. Not to mention the huge available panoramic sunroof. So if you were thinking that this sounds more luxurious than you were expecting, then welcome to the Jetta SportWagen.

Audio system. Feast your ears on the sound of the available touchscreen stereo with in-dash six-CD changer and crystal-clear HD Radio.™ It comes with SiriusXM Satellite Radio and a three-month trial subscription to Sirius Select package with over 130 channels, including commercial-free music, sports, news, and talk radio. That's a whole lot of entertainment, and it doesn't even count the AM/FM stations and individual CDs you could sing along to, all on the glorious 10-speaker sound system.

Touchscreen navigation. Thanks to the available touchscreen navigation system, there's no such thing as lost anymore. Just enter your destination, and let the computer do the rest. Not only will the navigation take you through every turn on-screen, but you'll also find step-by-step guidance right in your line of sight, in that screen that conveniently doubles as your trip computer.

SE shown in Cornsilk Beige



Safety

Carry your valuables in a safe place.

Nobody wants to think about what happens in the event of a collision. Except for our safety engineers. That's why our comprehensive safety system is composed of a variety of active and passive safety features that work together when they're needed most. And in the event you need them, the Insurance Institute for Highway Safety (IIHS) named the Jetta SportWagen a 2011 Top Safety Pick.* So you can feel confident that when you buy a Volkswagen, you're driving home more than just a car. You're taking home total peace of mind.

Active safety features are the things that help you prevent a collision, such as headlights, turn signals, mirrors, brakes, steering, and traction control elements like ABS and ESC.

Passive safety features are what help protect you during a collision, such as safety belts, airbags,** steel-reinforced seating, a safety cage, and crumple zones.

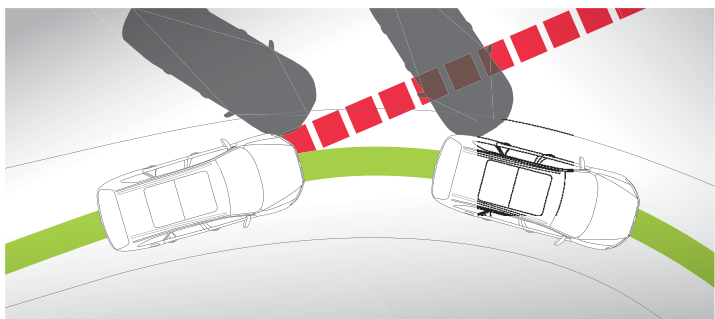
**Top Safety Pick* based on 31 mph side-impact crash test, 40 mph frontal-offset crash test, 20 mph rear-impact test, roof strength testing, and the availability of ESC. Test performed by the Insurance Institute for Highway Safety. For details, visit www.iihs.org. See vw.com for more information on safety features. **Airbags are supplemental restraints only and will not deploy under all crash circumstances. Always use safety belts and seat children only in the rear, using restraint systems appropriate for their size and age. *The Intelligent Crash Response System (ICRS) will only activate in a collision where the airbags deploy or safety belt pretensioners activate. Not all collisions cause airbags to deploy or safety belt pretensioners to activate.

Highlights

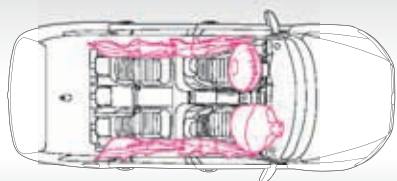
ESC

Electronic Stability Control

ESC helps correct oversteer or understeer by applying individual corrective forces to each of the wheels. Think of it as a little reassurance right when you need it.



6 standard airbags**



ICRS

Intelligent Crash Response System

After the airbags have been deployed in a collision, the ICRS automatically unlocks all doors, disables the fuel pump, and turns on the hazard lights! That's why we call it intelligent.

Active

Anti-Slip Regulation (ASR)

ASR helps prevent the wheels on your Jetta SportWagen from spinning when you accelerate by denying engine power in situations when it senses wheel slippage.

Anti-lock Braking System (ABS)

ABS actually serves two purposes. Not only does it help keep the brakes from locking up during sudden stops, but it also helps you retain control over the steering in the event of emergency braking.

Hydraulic Brake Assist (HBA)

HBA helps ensure that you get the maximum power from the brake system. How? It judges the suddenness of the braking and applies extra pressure when you need it most.

Exterior signal mirrors

In any relationship, communication is key. Using the built-in turn signals on your side mirrors alerts everyone to your intended next move, which can help prevent collisions.



This is a dramatization and does not depict what will happen in a crash. All airbags will not inflate in real-world crashes, and if multiple airbags do deploy, they will be in various stages of inflating/deflating and will never all be inflated at the same time.

Passive

Safety cage

Beneath all that sheet metal, every Jetta SportWagen has a specially reinforced safety cage complete with anti-intrusion side beams and heat-formed B-pillars, designed to help protect you in the event of a collision.

Crash-optimized front end

Integrated right into the front structure of your Jetta SportWagen are impact-absorbing elements that allow for compression during a collision. That helps minimize the energy that reaches you.

Collapsible steering column

Properly adjusting the steering wheel places the airbag in a more optimized position. Plus, the steering column is designed to collapse on impact to help dissipate collision forces.

Pressure sensors for side airbags

Pressure sensors within the doors help save precious reaction time by responding instantly to a breach in the outside door panels and triggering the Side Curtain Protection® airbags.



Carefree Maintenance[®]

At Volkswagen, we believe in our products so much that we give you three years or 36,000 miles of Carefree Maintenance—for no extra charge.* Come by for a courtesy vehicle check within the first 90 days, or 6,000 miles, and ask us any questions you have while we give your Jetta SportWagen a basic checkup. Then come by every year, or 10,000 miles, for your remaining scheduled maintenance checks. It's that simple. So relax and enjoy every carefree mile in your new VW. That's what it's there for. And because it's a Volkswagen, it'll keep that new car feeling for many years to come.



No-charge scheduled Carefree Maintenance

3 or **36,000***
Years Miles

*The Volkswagen Carefree Maintenance Program covers the vehicle's scheduled maintenance for three years or 36,000 miles, whichever comes first. Coverage during the term of the new vehicle limited warranty at no additional charge. Some limitations apply. See dealer or vehicle maintenance program booklet for details.

TDI shown in Reflex Silver Metallic with 17" Goal wheels

Jetta SportWagen S

Jetta SportWagen SE

Jetta SportWagen TDI®

2.5 S

Includes 2.5L, 170-hp engine; 5-speed manual transmission; 16" steel wheels with wheel covers and all-season tires; Climatic single-zone climate control; 8-speaker sound system with MP3- and WMA-compatible in-dash CD player, AM/FM radio, and AUX-in for portable audio players; Bluetooth® technology; heated front seats and washer nozzles; power door locks and windows with one-touch feature; 6-way partial power adjustable front seats with manual lumbar adjustment and power recline; 12V power outlet; front and rear floor mats; 60/40-split folding rear seats with pass-through center armrest; black roof rails; electromechanical speed-sensitive power steering system; 4-corner independent suspension; 4-wheel disc brakes; Electronic Stability Control (ESC); Anti-lock Braking System (ABS); Anti-Slip Regulation (ASR); Electronic Brake-pressure Distribution (EBD); Tire Pressure Monitoring System (TPMS).

Options

6-speed automatic transmission with Tiptronic® and Sport mode.

2.5L SE

Includes 2.5L S features, plus: 6-speed automatic transmission with Tiptronic and Sport mode; 16" Sedona alloy wheels; chrome grille and window surrounds; V-Tex leatherette seating surfaces; touchscreen Premium VIII sound system with and HD Radio,™ MP3- and WMA-compatible in-dash 6-disc CD changer, 10 speakers, and SiriusXM Satellite Radio with 3-month trial subscription; Media Device Interface (MDI) with iPod® cable; leather-wrapped multi-function steering wheel, shift knob and brake handle; multi-function trip computer with trip time, trip length, average trip speed, average trip fuel consumption, current fuel consumption, miles to empty, compass, radio station display, and personalization functions.

2.5L SE with Sunroof

Includes 2.5L SE features, plus: 17" Porto alloy wheels; power tilting/sliding panoramic sunroof.

2.0L TDI

Includes 2.5L SE features, plus: 2.0L, 140-hp TDI engine; 6-speed manual transmission; 16" Bioline alloy wheels; 115V power outlet.

2.0L TDI with Sunroof

Includes 2.0L TDI Clean Diesel features, plus: 17" Porto alloy wheels; power tilting/sliding panoramic sunroof.

2.0L TDI with Sunroof and Navigation

Includes 2.0L TDI Clean Diesel with Sunroof, plus: keyless access with push-button start; RNS 315 navigation system with 5" color touchscreen in center console.

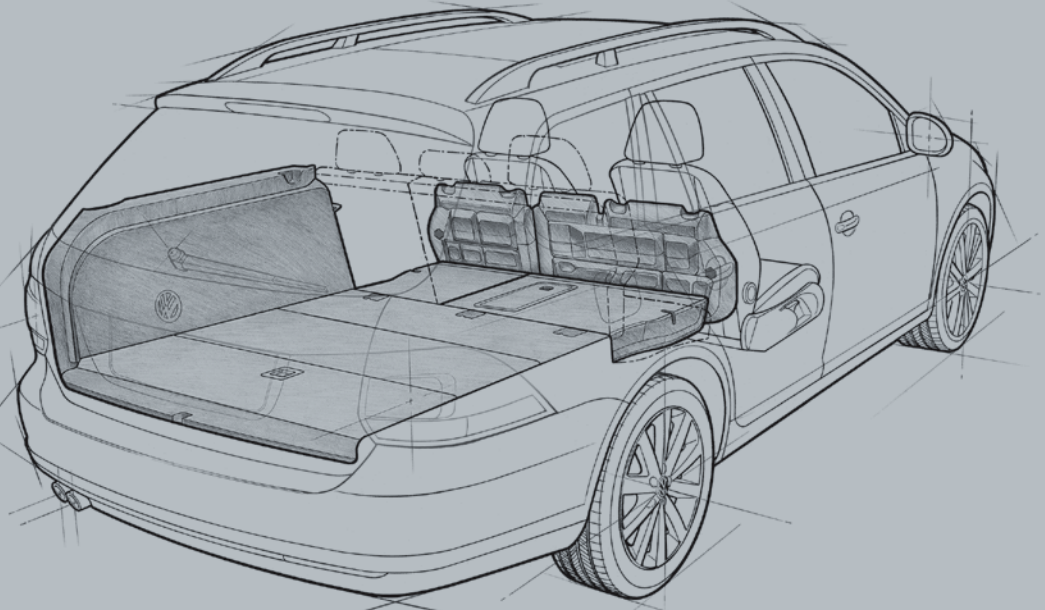
Options

6-speed DSG® automatic transmission with Tiptronic and Sport mode.

Cargo Space

Cargo capacity 32.8 cu. ft.
(0.93 cu. m)

Cargo capacity with rear
seats folded down 66.9 cu. ft.
(1.89 cu. m)



Specifications

● Standard, at no additional cost

○ Optional, additional cost

S Sunroof

SN Sunroof and Navigation

– Not Available

Design	2.5L S	2.5L SE	2.0L TDI
Window diversity antenna	–	●	●
Fully galvanized sheet metal	●	●	●
Crash-optimized front end	●	●	●
Halogen headlights with clear, lightweight, chip-resistant polycarbonate lenses and Daytime Running Lights (DRL)	●	●	●
Heated power side mirrors, with integrated turn signals	●	●	●
Power sliding panoramic sunroof (12.7 sq. ft.)	–	S	S
Tire Pressure Monitoring System (TPMS)	●	●	●
16" steel wheels with wheel covers	●	–	–
16" alloy wheels with anti-theft wheel locks	–	●	●
17" alloy wheels with anti-theft wheel locks	–	S	S
Windshield wipers, variable intermittent	●	●	●
Heated windshield washer nozzles	●	●	●
Performance	2.5L S	2.5L SE	2.0L TDI
2.5L, 20-valve, DOHC, in-line 5-cylinder engine; 170 hp, 177 lbs/ft of torque	●	●	–
2.0L, 16-valve, in-line 4-cylinder turbocharged clean diesel engine with common rail direct injection; 140 hp, 236 lbs/ft of torque	–	–	●
Power-assisted front vented disc brakes and rear solid disc brakes	●	●	●
Electromechanical power steering system with variable assistance and active return	●	●	●
Front MacPherson struts and rear fully independent 4-link suspension	●	●	●
5-speed manual transmission	●	–	–
6-speed manual transmission	–	–	●
6-speed automatic transmission with Tiptronic and Sport mode	○	●	–
6-speed DSG automatic transmission with Tiptronic and Sport mode	–	–	○
Comfort	2.5L S	2.5L SE	2.0L TDI
Climatic manual single-zone climate control with pollen filter	●	●	●
Anti-theft vehicle alarm system for doors, hood, trunk, and radio; starter interrupt, with autolock function and audible and visual activation	●	●	●
Immobilizer III theft-deterrent system	●	●	●
Cruise control	●	●	●
Electric rear window defroster	●	●	●
Speedometer, tachometer, odometer, trip odometer, fuel gauge, coolant temperature, clock, and outside temperature	●	●	●
Multi-function trip computer with compass, trip time, trip length, average trip speed, average trip fuel consumption, current fuel consumption, miles to empty, radio station display, and personalization functions	–	●	●
2 radio-frequency remote transmitter key fobs with lock, unlock, rear trunk release, panic button for central locking, and selectable access valet key feature	●	●	●
12V power outlet	●	●	●
115V power outlet	–	–	●
Center dome light with time delay, 2 reading lights	●	●	●
Automatic locking feature (doors lock when vehicle reaches 8 mph, unlock automatically upon airbag deployment)	●	●	●
Driver and front passenger visor vanity mirrors, illuminated with covers	●	●	●
6-way heated, partial power adjustable front seats with manual lumbar adjustment and power recline	●	●	●
60/40-split folding rear seat with center armrest and pass-through	●	●	●
Blinker control stalk with lane change feature	●	●	●
3-spoke steering wheel, height-adjustable with telescopic steering column	●	–	–
3-spoke, leather-wrapped, multi-function steering wheel, height-adjustable, with telescopic steering column	–	●	●

Comfort cont.	2.5L S	2.5L SE	2.0L TDI
Fully carpeted/lined luggage compartment	●	●	●
2 front cupholders; soft opening, lockable glovebox; 2 rear cupholders in rear center armrest	●	●	●
Cloth seating surfaces	●	–	–
V-Tex leatherette seating surfaces	–	●	●
Power windows with pinch protection and automatic 1-touch feature operable from all 4 doors	●	●	●
Technology	2.5L S	2.5L SE	2.0L TDI
Touchscreen Premium VIII sound system with HD Radio, MP3- and WMA-compatible in-dash 6-disc CD changer, 10 speakers, and SiriusXM Satellite Radio with 3-month trial subscription	–	●	●
8-speaker sound system with MP3- and WMA-compatible in-dash CD player and AM/FM radio	●	–	–
RNS 315 navigation system with 5" color touchscreen in center console and SD memory card reader	–	–	SN
AUX-in for portable audio players	●	●	●
Bluetooth technology	●	●	●
SiriusXM Satellite Radio with 3-month trial subscription	–	●	●
Media Device Interface (MDI) with iPod cable	–	●	●
Keyless access with push-button start	–	–	SN
Safety	2.5L S	2.5L SE	2.0L TDI
Electronic Stability Control (ESC), Anti-Slip Regulation (ASR), Electronic Differential Lock (EDL), and Engine Braking Assist (EBA)	●	●	●
Anti-lock Braking System (ABS), Electronic Brake-pressure Distribution (EBD), and Hydraulic Brake Assist (HBA)	●	●	●
Intelligent Crash Response System (ICRS)*	●	●	●
Driver and front passenger front and side thorax airbag supplemental restraint system**	●	●	●
Side Curtain Protection® airbags, front and rear**	●	●	●
Front seat safety belt pretensioners with load limiters	●	●	●
LATCH (Lower Anchors and Tethers for Children) child seat anchor points	●	●	●
Quality	2.5L S	2.5L SE	2.0L TDI
12-year/unlimited mileage Limited Warranty Against Corrosion Perforation	●	●	●
5-year/60,000-mile (whichever occurs first) Powertrain Limited Warranty	●	●	●
3-year/36,000-mile (whichever occurs first) New Vehicle Limited Warranty	●	●	●
3-year/36,000-mile (whichever occurs first) Roadside Assistance†	●	●	●
Volkswagen Carefree Maintenance Program††	●	●	●
Dimensions			
Wheelbase	101.5 inches (2,578 mm)		
Front track	60.7 inches (1,541 mm)		
Rear track	59.6 inches (1,514 mm)		
Length	179.4 inches (4,556 mm)		
Width	70.1 inches (1,781 mm)		
Height	59.2 inches (1,504 mm)		
Ground clearance	5.4 inches (138 mm)		
Cargo capacity	32.8 cu. ft. (0.93 cu. m)		
Cargo capacity with rear seats folded down	66.9 cu. ft. (1.89 cu. m)		

*The Intelligent Crash Response System (ICRS) will only activate in a collision where the airbags deploy or safety belt pretensioners activate. Not all collisions cause airbags to deploy or safety belt pretensioners to activate. **Airbags are supplemental restraints only and will not deploy under all crash circumstances. Always use safety belts and seat children only in the rear, using restraint systems appropriate for their size and age. †Roadside Assistance provided by Signature Motor Club, Inc., and Signature Motor Club of California, Inc. ††The Volkswagen Carefree Maintenance Program covers the vehicle's scheduled maintenance for three years or 36,000 miles, whichever comes first. Coverage during the term of the new vehicle limited warranty at no additional charge. Some limitations apply. See dealer or vehicle maintenance program booklet for details.

Wheels

Accessories

Exterior

Interior

Standard

drivergear.vw.com



S 16" Sedona



Exhaust Tips



Splash Guards



Monster Mat®



SE 16" Bioline



Base Carrier Bars with Bike Holder Attachment



Base Carrier Bars with Kayak Holder Attachment



MojoMat®



SE and TDI 17" Porto



18" Vision V

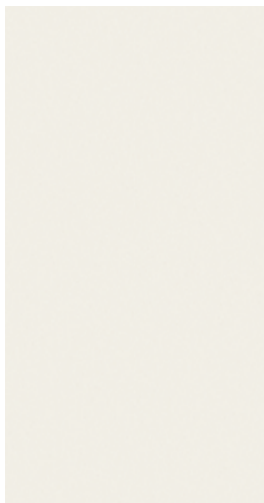


18" Goal

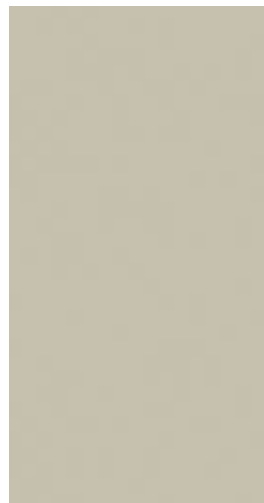


18" Motorsport

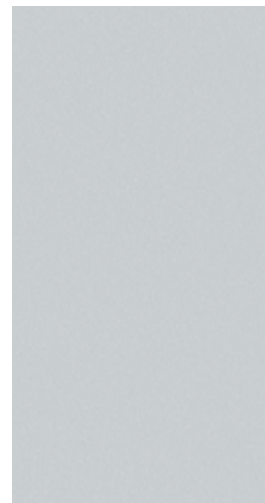
Paint



Candy White
Titan Black, Cornsilk Beige



White Gold Metallic
Titan Black, Cornsilk Beige



Reflex Silver Metallic
Titan Black



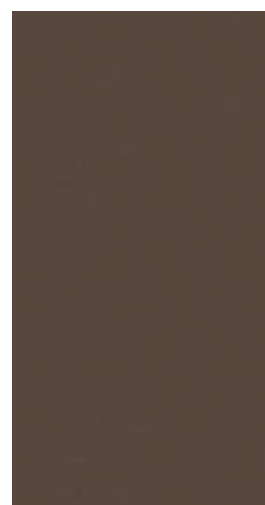
Platinum Gray Metallic
Titan Black



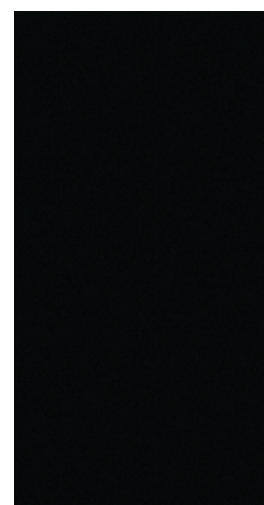
Tornado Red
Titan Black, Cornsilk Beige



Tempest Blue Metallic
Titan Black, Cornsilk Beige



Toffee Brown Metallic
Cornsilk Beige



Black
Titan Black, Cornsilk Beige

V-Tex Leatherette

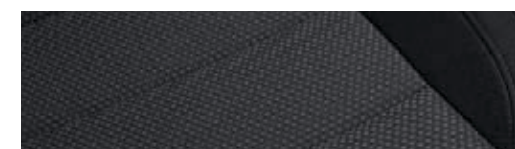


Titan Black



Cornsilk Beige

Cloth



Titan Black



That's Das Auto.

2012 Volkswagen Family

All-new Beetle



All-new Passat



Tiguan



Jetta



Eos



Golf



Touareg



CC



GTI



Jetta SportWagen



Routan



vw.com

©2011 Volkswagen of America, Inc. Printed in the U.S.A. Volkswagen of America, Inc., believes the specifications in this brochure to be correct at the time of printing. Specifications, standard equipment, options, fabrics and colors are subject to change without notice. Some features may be unavailable when your vehicle is built. Some vehicles are pictured with options that may be available at extra cost or may not be available on some models. Ask your dealer about availability of options and verify that the vehicle you ordered includes the equipment you ordered. Tires are supplied and warranted by their manufacturer. "Volkswagen," the Volkswagen logo, "Das Auto," "Jetta SportWagen," "TDI," and "DSG" are registered trademarks of Volkswagen AG. "Carefree Maintenance," the Carefree Maintenance logo, and "Side Curtain Protection" are registered trademarks of Volkswagen Group of America, Inc. "Tiptronic" is a registered trademark of Dr. Ing h.c.F. Porsche AG. "iPod" is a registered trademark of Apple, Inc. iPod is not included. "Bluetooth" is a registered trademark of Bluetooth SIG, Inc. Subscriptions to all SiriusXM services are sold separately after 3-month trial expires. *If you decide to continue your SiriusXM service at the end of your subscription, the plan you choose will automatically renew and bill at then-current rates until you call 1-866-635-2349 to cancel. See SiriusXM Customer Agreement for complete terms at www.siriusxm.com.* Sirius U.S. Satellite service available only to those at least 18 years of age in the 48 contiguous U.S.A., D.C. and P.R. (with coverage limitations). Sirius, XM and all related marks and logos are trademarks of Sirius XM Radio Inc. Volkswagen DVD navigation depends on the signals from the worldwide Global Positioning Satellite network. The vehicle's electrical system, and existing wireless and satellite technologies, must be available and operating properly for the system to function. The system is designed to provide you with suggested routes to location addresses, destinations, and other points of interest. Changes in street names, construction zones, traffic flow, points of interest, and other road system changes are beyond the control of Volkswagen of America, Inc. Complete detailed mapping of lanes, roads, streets, toll roads, highways, etc., is not possible, therefore you may encounter discrepancies between the mapping and your actual location. Please rely on your individual judgment in determining whether or not to follow a suggested navigation route. Periodically, the mapping is updated and a new DVD will be required in order to maintain the latest navigation information available to us. These will be available for purchase from time to time at additional cost. For further information regarding any Volkswagen model, please call 1-800-DRIVE-VW, or just look us up at vw.com. VW12JSWSBUS