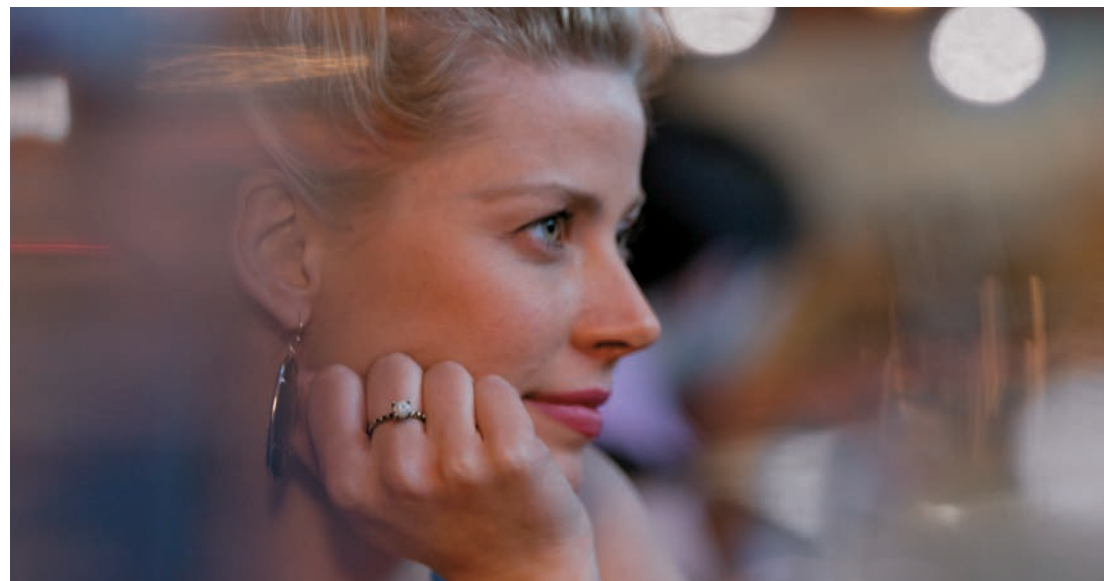




2013 Touareg



Das Auto.



The best of everything we've perfected.

The Touareg was created with one idea in mind: Is it possible to build a truly premium and capable SUV? Never ones to shy away from a challenge, we took every premium feature we had, created a chassis that could handle itself on the Autobahn, and dressed it with a stylish, sophisticated SUV design. The result was an award-winning vehicle that defied categorization. Eight years later the Touareg is still winning rave reviews for its bevy of fuel-efficient engines and remarkable, category-bending style. Which really begs a new question: How much can you accomplish while driving one? **That's the Power of German Engineering.**



2013 Touareg



V6 Lux shown in Saddle Brown leather

It just feels good.

It should feel good to climb inside your new Touareg. Like it was meant to be yours all along. With the leather-wrapped steering wheel poised at the ready in front of the 8-way adjustable, luxuriously cushioned seat. And an equally adjustable passenger seat complete with dual-zone climate control for your first lucky passenger. Not to be outdone, there are available heated, reclining, adjustable seats in back for anyone else who's along for the ride. So just in case you were wondering just how good the Touareg feels, no matter where you sit, you'll feel as if it was made for you.

Features

- Keyless access with push-button start^{*/**}
- 115V power outlet
- 12.7-square-foot panoramic sunroof*
- 12-way power-adjustable front seats*
- Leather-wrapped, multi-function steering wheel
- Vienna leather seating surfaces*
- Dual-zone automatic climate control
- Heated steering wheel*

*Feature available on select models. **See back cover for important information on this feature.

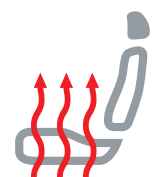


Interior

Smart



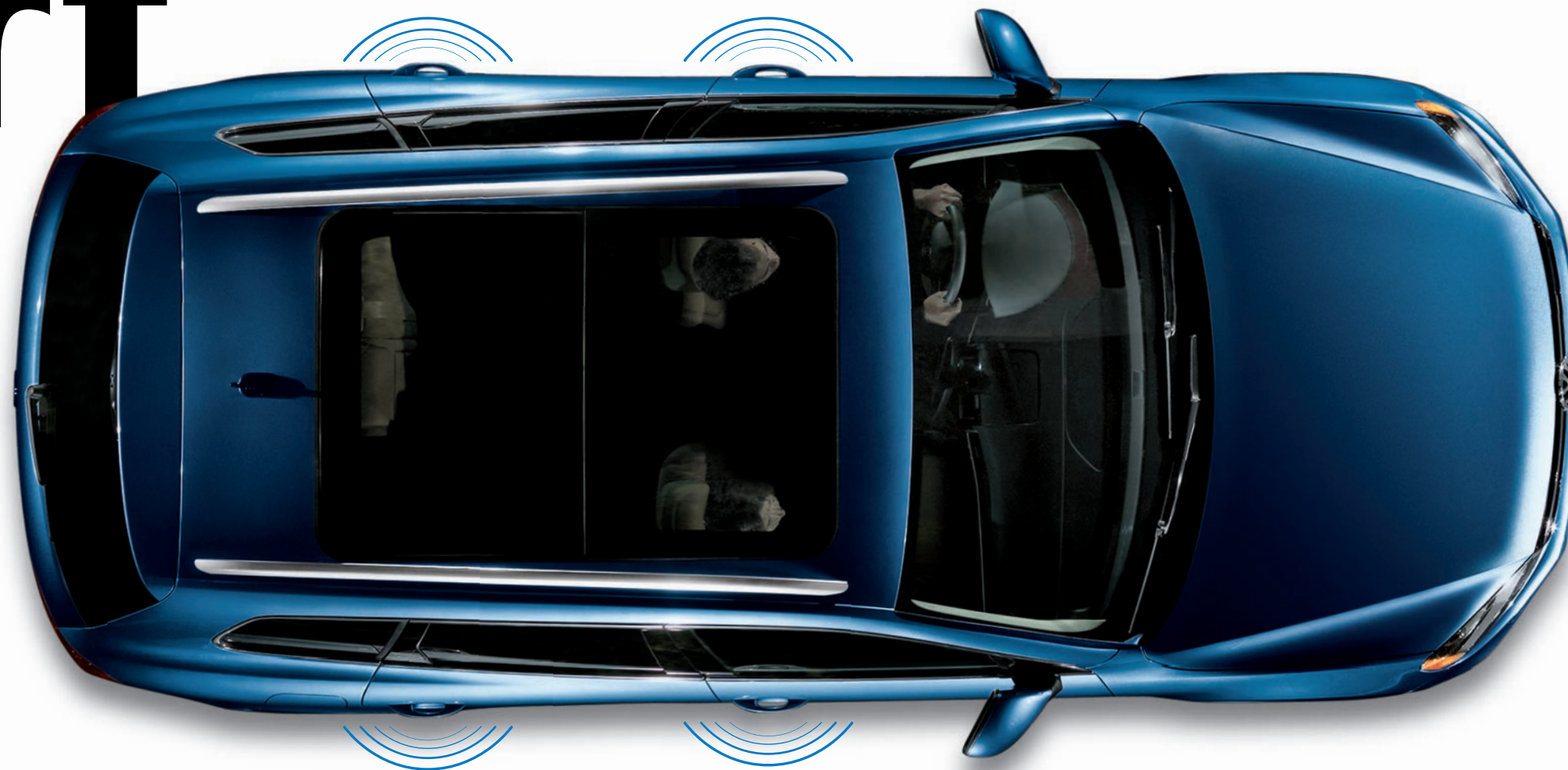
Perhaps you've noticed. Volkswagen has an exceptional SUV. It's available with almost every premium feature we have to offer, which is basically all the smartest thinking we've done to date, and it has the most powerful engines in our lineup, including the unique supercharged hybrid.* Touareg is the best and brightest of German engineering combined with the ultimate in refinements. Or, as we like to call it, refinement, redefined.



Heated seats. For anyone who has ever experienced the pleasure of heated seats on a cold day, they're a must. In the Touareg, front heated seats are a given. And luckily, the rear seats have that feature available too.



Keyless access. Leave your keys where they are—in your pocket, your purse, your jacket, wherever. With available keyless access, you can just walk up to your Touareg and grasp the driver's side door handle. You don't even have to remember a password, you're already in.



3D navigation. The Touareg is available with our top-of-the-line navigation system complete with 3D landmarks. So the world you see ahead of you is replicated right in the full-color display in the dash.



LED Daytime Running Lights. The LED detail of the Bi-Xenon headlights sets the stage for the Adaptive Front-lighting System (AFS) that actually turns the headlights up to 15 degrees around corners, allowing you to see things in a whole new light.

TDI Clean Diesel

TDI Clean Diesel. Diesel engines have always had a smart design. So it's only natural that we gave the Touareg an available 240-hp clean diesel engine with a whopping 406 lbs/ft of torque. It puts the sport and the utility right under the hood so you end up with a very intelligent and efficient vehicle.

*The Touareg Hybrid is available in the U.S. in very limited quantities and only at participating Volkswagen dealers.

Emphasis on U.

It looks sporty, but it's got utility written all over it. That's the beauty of the Touareg. You feel just as good pulling up to a valet at the nicest restaurant as you do pulling up to a remote mountain cabin after a snowfall. And there's plenty of room for whatever you please, thanks to the 40/20/40-split folding rear seats. Slide them forward or back, depending on your passengers or your cargo. And in case you need a little extra assist, press a button on your key fob to open and close the rear liftgate. Now if you could just get your passengers to help you carry your stuff.

Features

- 64 cubic feet of available cargo space*
- Remote opening and closing power liftgate
- Electric rear seat release in cargo area**
- Rear seats with fore and aft sliding adjustment



Versatility

*With rear seats folded down. **Feature available on select models.



Sport with Navigation shown in Night Blue Metallic



V6 Lux shown in Black Anthracite leather



A lot of tricks up its sleeve.

It's all right there in front of you. But at first glance, you may overlook some of its many features. For example, you can see that it has available navigation, but you may not realize that the full-color system also displays 3D landmarks and gives you turn-by-turn directions right in your line of sight in the trip computer. More than that, it will play music and SiriusXM Satellite Radio, and automatically pause to let you answer a phone call.* With the Touareg, there's so much more than meets the eye.

Features

- Touchscreen sound system
- Touchscreen navigation with 3D landmarks and voice commands**
- Dynaudio® premium sound system**
- SiriusXM Satellite Radio with 3-month trial subscription
- Premium color multi-function trip computer
- Bluetooth® with audio streaming*
- Media Device Interface (MDI) with iPod® cable
- SiriusXM Traffic with 4-year subscription**



*Requires compatible device. **Feature available on select models.



Technology



V6 FSI Executive shown in Flint Gray Metallic



Performance

Features

- 7,700-pound towing capacity*
- 4MOTION® all-wheel drive
- Servotronic® steering system
- 8-speed automatic transmission
- FSI® direct fuel injection

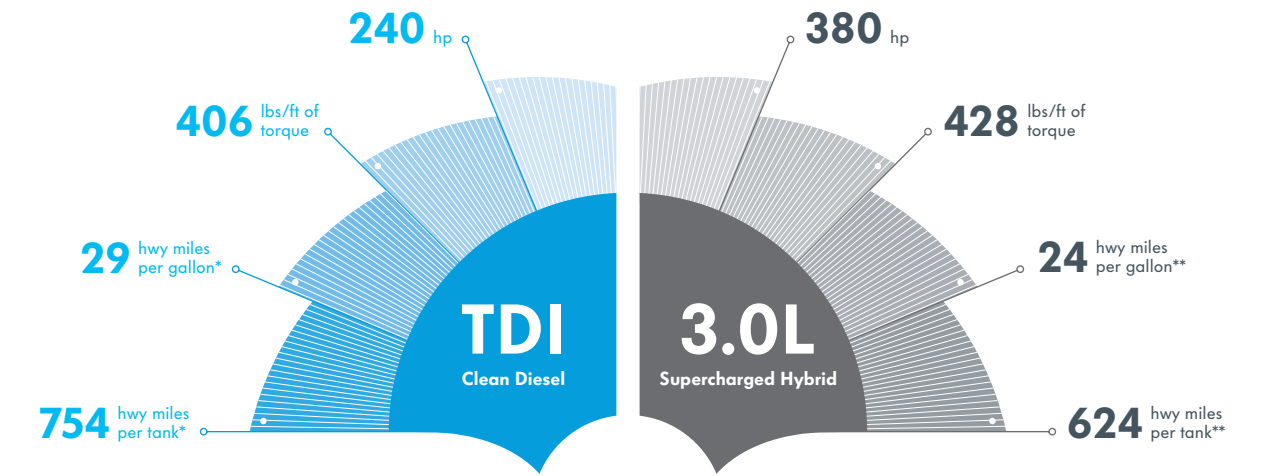
*Optional towing package required.

German engineering at its finest.

How do you like your power? Choose between the robust V6, the super-efficient TDI Clean Diesel, and the impressive, supercharged hybrid. No matter which one you choose, all three models are built to get you where you need to go. Take the 3.6L V6. It's one of the most powerful Volkswagen engines you can have under the hood, and with 280 horsepower and 265 lbs/ft of torque, it's ready to take you anywhere you want to go—the market, your favorite restaurant, the lake, work, the mountains.



Hybrid shown in Tungsten Silver Metallic



So much more than fuel.

Sure, you need fuel to get you going, but you really need a fuel-efficient vehicle to keep you going. The TDI runs on ultra-low-sulfur diesel and gets up to 754 highway miles per tank.* It also has 240 hp and 406 lbs/ft of torque for exceptional power off the line and plenty of speed to get you where you need to go!

The Touareg Hybrid not only has a supercharged hybrid powertrain, but it packs a powerful punch with a combined output of 380 hp and 428 lbs/ft of torque. Not to mention its capacity of up to 624 highway miles per tank.** So if you're going the distance, the Touareg TDI is right up your alley. If you're more of a stop-and-go city dweller, the Touareg Hybrid will also let you do that in style—without sacrificing your mileage. And no matter which model you choose, every Touareg goes for a long, long time between fill-ups.

*2012 3.0L TDI Clean Diesel, automatic transmission: 19 city/29 highway mpg EPA estimates. Range based on 29 highway mpg EPA estimate and a 26-gallon tank. Your mileage will vary. **2012 3.0L supercharged hybrid, automatic transmission: 20 city/24 highway mpg EPA estimates. Range based on 24 highway mpg EPA estimate and a 26-gallon tank. Your mileage will vary. The Touareg Hybrid is available in the U.S. in very limited quantities and only at participating Volkswagen dealers. *Always obey local speed and traffic laws.

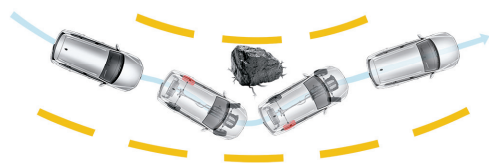


Efficiency



Safety

You know that German engineering you admire under the hood? It's actually throughout the entire car. There are more than a dozen safety features specifically designed to help you prevent a collision. And even more to help protect you in the event of one. So no matter what happens, we'll do our best to help keep you safe.



Electronic Stability Control (ESC). ESC helps prevent oversteer or understeer during an evasive maneuver by applying corrective forces to each of the wheels. In other words, it helps you maintain control when you need it most.



ABS and HBA. The Anti-lock Braking System (ABS) helps keep the brakes from locking up during sudden stops and helps you retain control over the steering during emergency braking. Hydraulic Brake Assist (HBA) works with ABS to help ensure that you get the maximum braking power from the brake system.



Surrounded by safety. In addition to airbags,* every Touareg has a specially reinforced safety cage complete with anti-intrusion side beams and hardened steel B-pillars, designed to help protect you in the event of a collision. Surrounding that are crumple zones that provide space and material to help cushion and absorb the impact while the safety cage insulates you.



Intelligent Crash Response System (ICRS). After the airbags* have deployed in a collision, the ICRS automatically unlocks all doors, disables the fuel pump, and turns on the hazard lights.** That's why we call it intelligent.



IIHS Top Safety Pick. The 2012 Touareg is one of the Insurance Institute for Highway Safety's Top Safety Picks.† Actually, it's one of nine 2012 Volkswagen models to get their top award. That means all nine cars scored the highest rating in all four qualifying tests. That's 36 instances of superior safety.



Lower Anchors and Tethers for Children (LATCH). LATCH allows you to secure child seats to your Touareg using specific built-in anchors that connect the seat to the safety cage. When the child seat is installed and used correctly, this helps maximize the safety of the seats.

This is a dramatization and does not depict what will happen in a collision. All bags will not inflate in real-world collisions, and if multiple bags do deploy, they will be in various stages of inflating/deflating and will never all be inflated at the same time.*Airbags are supplemental restraints only and will not deploy under all crash circumstances. Always use safety belts and seat children only in the rear, using restraint systems appropriate for their size and age.**The Intelligent Crash Response System (ICRS) will only activate in a collision where the airbags deploy or safety belt pretensioners activate. Not all collisions cause airbags to deploy or safety belt pretensioners to activate.††Top Safety Pick™ based on 31 mph side-impact crash test, 40 mph frontal-offset crash test, 20 mph rear-impact test, roof strength testing, and the availability of ESC. Test performed by the Insurance Institute for Highway Safety. For details, visit www.iihs.org. See vw.com for more information on safety features.



V6 TDI Lux shown in Cool Silver Metallic

Years **3** or
126 date
nights

No-charge scheduled Carefree Maintenance.*

Changing your oil, rotating your tires, topping off the windshield wiper fluid—do you remember to do all that stuff? Your car does. Right there in your instrument panel. Both it and the dealer will let you know when it's time to schedule your appointment. And for three years, or 36,000 miles, we've got you covered. That's why we call it carefree. Come by for a courtesy vehicle check within the first 90 days, or 6,000 miles, and ask us any questions you have while we give your Touareg a basic checkup. Then, come by every year, or 10,000 miles, for your remaining scheduled maintenance checks. It's that simple.

*The Volkswagen Carefree Maintenance Program covers the vehicle's scheduled maintenance for three years or 36,000 miles, whichever comes first. Coverage during the term of the new vehicle limited warranty at no additional charge. Some limitations apply. See dealer or vehicle maintenance program booklet for details.



3 Years or 36,000 Miles of No-Charge Scheduled Maintenance.
Whichever occurs first. Some restrictions. See dealer or program for details.

V6

Sport

Includes: 3.6L V6, 280-hp engine with FSI,[®] 4MOTION[®] all-wheel drive, 8-speed automatic transmission; 18" Karakum alloy wheels with all-season tires; silver roof rails; halogen reflector lens foglights; Bi-Xenon high-intensity headlights with Adaptive Front-lighting System (AFS) and LED Daytime Running Lights (DRL); Climatronic[®] dual-zone automatic climate control; leather-wrapped, multi-function steering wheel; premium color multi-function instrument cluster display; four 12V power outlets; one 115V power outlet; remote opening and closing power tailgate with closing assist and comfort opening cargo cover; HomeLink[®] V-Tex leatherette seating surfaces; black high-gloss center console and trim surrounds; 8-way power, heated front seats; heated windshield washer nozzles; 40/20/40-split folding rear seat with 60/40 fore and aft sliding adjustment and 3-stage adjustment backrest; Bluetooth[®] with audio streaming;* RCD-550 sound system with 6.5" color touchscreen in center console, HD Radio,[™] SD memory card reader, AUX-in for portable audio players, SiriusXM Satellite Radio with 3-month trial subscription, MDI with iPod[®] cable, and 8 speakers; Electronic Stability Control (ESC); Tire Pressure Monitoring System (TPMS).

Sport with Navigation

Includes Sport features, plus: RNS-850 navigation system with 8" color touchscreen in center console, rearview camera, 60GB hard drive, 3D landmarks, CD/DVD player with advanced audio converting, and SiriusXM Traffic with 4-year subscription.

Lux

Includes all Sport with Navigation features, plus: 19" Everest alloy wheels; panoramic power sunroof; heated, power-adjustable side mirrors with memory; walnut interior trim and center console with metallic trim surrounds; Vienna leather seating surfaces; 12-way power driver’s seat with memory and power-adjustable lumbar support; electric rear seat release located in rear cargo area.

Executive

Includes Lux features, plus: 20" Pikes Peak alloy wheels; heated, multi-function steering wheel; heated rear seats; keyless access with push-button start;** vavona wood interior trim and center console; Park Distance Control (PDC) with front and rear proximity sensors; Dynaudio[®] premium sound system.

The best powertrain warranty in its class.

The Touareg comes with a 10-year/100,000-mile, whichever comes first, Powertrain Limited Warranty.[†]

Which means if something goes wrong with the engine, the transmission, or the 4MOTION all-wheel-drive system, Volkswagen has you covered.

TDI[®] Clean Diesel

Sport

Includes: 3.0L V6, 240-hp TDI Clean Diesel engine; 4MOTION all-wheel drive, 8-speed automatic transmission; 18" Karakum alloy wheels with all-season tires; silver roof rails; halogen reflector lens foglights; Bi-Xenon high-intensity headlights with Adaptive Front-lighting System (AFS) and LED Daytime Running Lights (DRL); Climatronic[®] dual-zone automatic climate control; leather-wrapped, multi-function steering wheel; premium color multi-function instrument cluster display; four 12V power outlets; one 115V power outlet; remote opening and closing power tailgate with closing assist and comfort opening cargo cover; HomeLink[®] V-Tex leatherette seating surfaces; black high-gloss center console and trim surrounds; 8-way power, heated front seats; heated windshield washer nozzles; 40/20/40-split folding rear seat with 60/40 fore and aft sliding adjustment and 3-stage adjustment backrest; Bluetooth with audio streaming;* RCD-550 sound system with 6.5" color touchscreen in center console, HD Radio, SD memory card reader, AUX-in for portable audio players, SiriusXM Satellite Radio with 3-month trial subscription, MDI with iPod cable, and 8 speakers; Electronic Stability Control (ESC); Tire Pressure Monitoring System (TPMS).

Sport with Navigation

Includes Sport features, plus: RNS-850 navigation system with 8" color touchscreen in center console, rearview camera, 60GB hard drive, 3D landmarks, CD/DVD player with advanced audio converting, and SiriusXM Traffic with 4-year subscription.

Lux

Includes all Sport with Navigation features, plus: 19" Everest alloy wheels; panoramic power sunroof; heated, power-adjustable side mirrors with memory; walnut interior trim and center console with metallic trim surrounds; Vienna leather seating surfaces; 12-way power driver’s seat with memory and power-adjustable lumbar support; electric rear seat release located in rear cargo area.

Executive

Includes Lux features, plus: 20" Pikes Peak alloy wheels; heated, multi-function steering wheel; heated rear seats; keyless access with push-button start;** vavona wood interior trim and center console; Park Distance Control (PDC) with front and rear proximity sensors; Dynaudio premium sound system.

Supercharged Hybrid

Hybrid

Includes V6 Sport with Navigation features, plus: 3.0L 380-hp hybrid powerplant; 19" Everest alloy wheels with all-season, low-rolling-resistance tires; panoramic power sunroof; LED taillights; heated, multi-function steering wheel; heated rear seats; heated, power-adjustable side mirrors with memory; power-adjusting steering column with memory; keyless access with push-button start;** Park Distance Control (PDC) with front and rear proximity sensors; vavona wood interior trim and center console with metallic trim surrounds; Vienna leather seating surfaces; 12-way power front seats with driver and passenger memory and power-adjustable lumbar support; metal scuff plates on door sills; aluminum appearance pedals.

Specifications

Design	Sport	Lux	Exec	Hybrid
Bi-Xenon high-intensity headlights with LED Daytime Running Lights (DRL) and Adaptive Front-lighting System (AFS)	●	●	●	●
Halogen reflector lens foglights	●	●	●	●
Power-operated, heated side mirrors with integrated turn signals	●	–	–	–
Power-operated, heated side mirrors with memory and integrated turn signals	–	●	●	●
Power sliding panoramic sunroof	–	●	●	●
Remote opening and closing power tailgate with closing assist	●	●	●	●
Trailer hitch	○	○	○	○
LED taillights	–	–	–	●
18" alloy wheels with anti-theft wheel locks	●	–	–	–
19" alloy wheels with anti-theft wheel locks	–	●	–	●
20" alloy wheels with anti-theft wheel locks	–	–	●	–
Rain-sensing windshield wipers with heated washer nozzles	●	●	●	●

Performance	Sport	Lux	Exec	Hybrid
3.6L, 24-valve, DOHC, narrow-angle V6 with FSI direct fuel injection; 280 hp, 265 lbs/ft of torque	○	○	○	–
3.0L, 24-valve, DOHC, V6, TDI Clean Diesel engine with common rail direct injection; 240 hp, 406 lbs/ft of torque	○	○	○	–
3.0L, supercharged V6 gas engine and electric motor, combined 380 hp, 428 lbs/ft of torque	–	–	–	●
4MOTION all-wheel-drive system	●	●	●	●
Servotronic [®] steering system (power assisted)	●	●	●	●
Double wishbone front and rear independent suspension	●	●	●	●
8-speed automatic transmission	●	●	●	●

Comfort	Sport	Lux	Exec	Hybrid
Climatronic dual-zone automatic climate control with pollen filter	●	●	●	●
Speedometer, tachometer, odometer, trip odometer, fuel gauge, coolant temperature, clock, and outside temperature	●	●	●	●
Premium color multi-function trip computer with compass, trip time, trip length, average trip speed, average trip fuel consumption, current fuel consumption, miles to empty, radio station display, and personalizing function	●	●	●	●
2 radio-frequency remote transmitter key fobs with lock, unlock, trunk release, panic button, and selectable access valet key feature	●	●	●	●
4 12V power outlets; 1 115V power outlet	●	●	●	●
Self-dimming rearview mirror with on/off switch	●	●	●	●
Black high-gloss center console and trim surrounds	●	–	–	–
Walnut interior trim and center console	–	●	–	–
Vavona interior trim and center console	–	–	●	●
8-way power-adjustable front seats	●	–	–	–
12-way power-adjustable driver’s seat with 4-way power lumbar support and 3-position memory function for driver’s seat and side mirrors	–	●	●	–
12-way power adjustable front seats with 4-way power lumbar support and 3-position memory function for front seats, side mirrors, and power steering column	–	–	–	●
Heated front seats	●	●	●	●
Heated rear seats	–	–	●	●
3-spoke, leather-wrapped, multi-function steering wheel	●	●	–	–
Heated 3-spoke, leather-wrapped, multi-function steering wheel	–	–	●	●
Center front armrest with integrated storage box	●	●	●	●
4 cupholders, 2 front and 2 rear	●	●	●	●
Glovebox, lockable and illuminated, with adjustable cooling feature	●	●	●	●
Fully upholstered luggage compartment	●	●	●	●

Comfort cont.	Sport	Lux	Exec	Hybrid
V-Tex leatherette seating surfaces	●	–	–	–
Vienna leather seating surfaces	–	●	●	●
Power windows with pinch protection; front windows with automatic 1-touch feature	●	●	●	●

Technology	Sport	Lux	Exec	Hybrid
RCD-550 sound system with 6.5" color touchscreen in center console, HD Radio, SD memory card reader, AUX-in for portable audio players, and 8 speakers	●	–	–	–
RNS-850 navigation system with 8" color touchscreen in center console, 3D landmarks, CD/DVD player, advanced audio converting, SD card reader, 60GB hard drive, AUX-in, HD Radio receiver, and 8 speakers	N	●	●	●
Rearview camera	N	●	●	●
SiriusXM Satellite Radio with 3-month trial subscription	●	●	●	●
SiriusXM Traffic with 4-year subscription	N	●	●	●
Media Device Interface (MDI) with iPod cable	●	●	●	●
Bluetooth with audio streaming*	●	●	●	●
Dynaudio premium sound system, with 10 high-end speakers (4 tweeters, 2 midrange, 4 woofers) and 620-watt amplifier	–	–	●	–
Park Distance Control (PDC) with front and rear proximity sensors	–	–	●	●
Keyless access with push-button start**	–	–	●	●

Safety	Sport	Lux	Exec	Hybrid
Anti-theft vehicle alarm system for doors, hood, trunk, radio; starter interrupt with autolock function and audible and visual activation	●	●	●	●
Driver and passenger front and side thorax airbag supplemental restraint system ^{††}	●	●	●	●
Side Curtain Protection [®] head airbags, front and rear ^{††}	●	●	●	●
3-point safety belts for all 5 seating positions; belt force limiters for all 5 seats, and belt tensioners for front seats	●	●	●	●
LATCH (Lower Anchors and Tethers for CHildren) child seat anchor points	●	●	●	●
Anti-lock Braking System (ABS), Electronic Brake-pressure Distribution (EBD), and Hydraulic Brake Assist (HBA)	●	●	●	●
Electronic Stability Control (ESC), Anti-Slip Regulation (ASR), Electronic Differential Lock (EDL), and Engine Braking Assist (EBA)	●	●	●	●
Electric parking brake	●	●	●	●
Intelligent Crash Response System (ICRS) [‡]	●	●	●	●
Tire Pressure Monitoring System (TPMS)	●	●	●	●

Quality	Sport	Lux	Exec	Hybrid
12-year/unlimited mileage Limited Warranty Against Corrosion Perforation	●	●	●	●
10-year/100,000-mile (whichever occurs first) Powertrain Limited Warranty	●	●	●	●
3-year/36,000-mile (whichever occurs first) New Vehicle Limited Warranty	●	●	●	●
3-year/36,000-mile (whichever occurs first) Roadside Assistance ^{††}	●	●	●	●
3-year/36,000-mile (whichever occurs first) no-charge scheduled Carefree Maintenance [®] Program [‡]	●	●	●	●

Dimensions	
Wheelbase	113.9 inches (2,893 mm)
Front track	64.9 inches (1,650 mm)
Rear track	65.7 inches (1,670 mm)
Length	188.8 inches (4,795 mm)
Width	76.4 inches (1,940 mm)
Height	68.2 inches (1,732 mm)
Ground clearance	7.9 inches (200 mm)

● Standard, at no additional cost

○ Optional, additional cost

N Sport with Navigation

– Not Available

^[1] Requires compatible device. **See back cover for important information on this feature. †See dealer or warranty booklet for details; some restrictions apply. ††Airbags are supplemental restraints only and will not deploy under all crash circumstances. Always use safety belts and seat children only in the rear, using restraint systems appropriate for their size and age. ‡The Intelligent Crash Response System (ICRS) will only activate in a collision where the airbags deploy or safety belt pretensioners activate. Not all collisions cause airbags to deploy or safety belt pretensioners to activate. ‡†Roadside Assistance provided by Signature Motor Club, Inc., and Signature Motor Club of California, Inc. ‡The Volkswagen Carefree Maintenance Program covers the vehicle's scheduled maintenance for three years or 36,000 miles, whichever comes first. Coverage during the term of the new vehicle limited warranty at no additional charge. Some limitations apply. See dealer or vehicle maintenance program booklet for details

Wheels

Standard



Sport 18" Karakum



LUX and Hybrid 19" Everest



Executive 20" Pikes Peak

Accessories

drivergear.vw.com



Base Carrier Bars with Roof Box Carrier Attachment



Base Carrier Bars with Snowboard/Ski Attachment



Base Carrier Bars with Bike Holder Attachment



Monster Mat®



MojoMat®



Side Window Deflectors



Trailer Hitch and Ball Mount



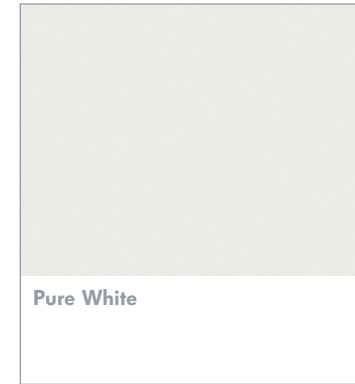
Rear Hatch and Side Window Sun Blinds



Touareg License Plate Frame

Exterior

● Hybrid only



Pure White



Cool Silver Metallic



Tungsten Silver Metallic



Canyon Gray Metallic



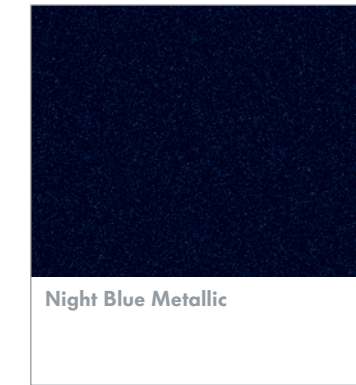
Flint Gray Metallic



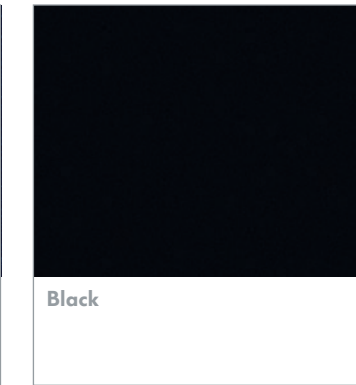
Galapagos Gray Metallic



Toffee Brown Metallic



Night Blue Metallic



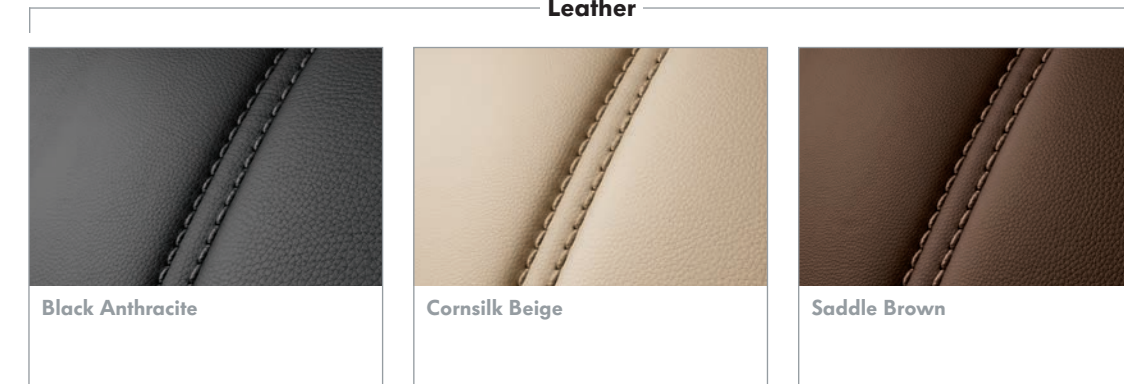
Black

Interior



Black Anthracite

Cornsilk Beige



Black Anthracite

Cornsilk Beige

Saddle Brown



Das Auto.

2013 Volkswagen Family

Beetle



Passat



Jetta



Tiguan



CC



Golf



Jetta SportWagen



GTI



Touareg



Eos



Think Blue.®

Think Blue is the Volkswagen way to drive progress by creating and producing cars that are more efficient,* eco-conscious, and fun to drive. The Volkswagen line features a variety of BlueMotion® technologies—from TDI engines to precision fuel injection—designed to make our vehicles as blue as possible. Which is likely to make other car companies green with envy. Learn how we think beyond green at vw.com/thinkblue.

vw.com

©2012 Volkswagen of America, Inc. Printed in the U.S.A. Volkswagen of America, Inc., believes the specifications in this brochure to be correct at the time of printing. Specifications, standard equipment, options, fabrics, and colors are subject to change without notice. Some features may be unavailable when your vehicle is built. Some vehicles are pictured with options that may be available at extra cost or may not be available on some models. Ask your dealer about availability of options and verify that the vehicle you ordered includes the equipment you ordered. Tires are supplied and warranted by their manufacturer. "Volkswagen," the Volkswagen logo, "Das Auto," "Touareg," "TDI," "TSI," "Climatronic," "DSP" and "4MOTION" are registered trademarks of Volkswagen AG. "Carefree Maintenance," the Carefree Maintenance logo, and "Side Curtain Protection" are registered trademarks of Volkswagen Group of America, Inc. "FSI" is a trademark of Audi AG. "Dynaudio" is a registered trademark of Continental Audio Electronic GMBH. "Bluetooth" is a registered trademark of Bluetooth SIG, Inc. Some Volkswagen models are equipped with a keyless ignition feature. The details as to how the system works can vary and Volkswagen owners should consult their owner's literature or an authorized Volkswagen dealer if they have further questions about the operation of this feature. Please note that Volkswagen warns against leaving the vehicle unattended with the engine running, particularly in enclosed spaces. Subscriptions to all SiriusXM services are sold separately after 3-month trial expires. SiriusXM Traffic service available in select markets. *If you decide to continue your SiriusXM service at the end of your subscription, the plan you choose will automatically renew and bill at then-current rates until you call 1-866-635-2349 to cancel. See SiriusXM Customer Agreement for complete terms at www.siriusxm.com.* Sirius U.S. satellite service available only to those at least 18 years of age in the 48 contiguous U.S.A., D.C., and P.R. (with coverage limitations). Sirius, XM, and all related marks and logos are trademarks of Sirius XM Radio Inc. Volkswagen DVD navigation depends on the signals from the worldwide Global Positioning Satellite network. The vehicle's electrical system, and existing wireless and satellite technologies, must be available and operating properly for the system to function. The system is designed to provide you with suggested routes to location addresses, destinations, and other points of interest. Changes in street names, construction zones, traffic flow, points of interest, and other road system changes are beyond the control of Volkswagen of America, Inc. Complete detailed mapping of lanes, roads, streets, toll roads, highways, etc., is not possible, therefore you may encounter discrepancies between the mapping and your actual location. Please rely on your individual judgment in determining whether or not to follow a suggested navigation route. Periodically, the mapping is updated and a new DVD will be required in order to maintain the latest navigation information available to us. These will be available for purchase from time to time at additional cost. For further information on all these topics, please consult the owner's manual, your local dealer, or call 1-800-DRIVE-VW. For further information regarding any Volkswagen model, please call 1-800-DRIVE-VW, or just look us up at vw.com. WW13TSBUS

*See www.fueleconomy.gov for EPA estimates. Your mileage will vary.