

# 2015 Jetta



Das Auto.

# Jetta



**Feel. It's more than a feature. It's not just about bells or whistles. It's about the fundamentals of German engineering, craftsmanship, and attention to detail that make Jetta so dynamically Jetta. Tactile and tangible, these signatures of design and quality create a difference you can not only see and hear, but most importantly, feel. Isn't it time for German engineering?**



SEL shown in Reflex Silver Metallic with Lighting Package

## Form follows function, which leads to fun.

**Design.** Everything about the Jetta is designed with a purpose. It's not just meant to be refined and beautiful, it's meant to be driven and enjoyed by everyone who can appreciate the simple curve of a hood, as well as an S-curve on a mountain road. Because if everyone can't have fun with it, what fun is that?



**Bi-Xenon headlights.\*** Brighter with better visibility at night than traditional halogen headlights. The Adaptive Front-lighting System (AFS) can also turn the headlights up to 15 degrees to help you see. And be seen.

**Heated power side mirrors.** Look behind those beautifully designed side mirrors and you'll find they're heated. So when your vision of things starts to fog up, you can have a clear view.

**Redesigned front/rear exteriors.** Both the front and rear of the Jetta were redesigned to look more sporty and refined, which gives the Jetta more presence on the road. We think you'll like how it looks, coming and going.

18" alloy wheels\*

Bi-Xenon headlights with LED Daytime Running Lights (DRL)\*

Side mirrors with integrated turn signals\*

LED taillights\*

Foglights\*

Interior ambient lighting\*

\*Feature available on select models.

**Built to last.**



**Forged-steel door hinges.** These hinges are forged to be strong and durable. So if you're looking for the reason your Jetta makes that solid "thunk" sound when you close the doors, look behind doors number 1, 2, 3, and 4.

**Laser seam welding.** Another process that helps give the Jetta that solid feel. Unlike spot welding, which can leave gaps, laser seam welding creates continuous sealed seams, resulting in a more rigid chassis and a noticeably seamless roof.

**Soft-touch dashboard.** An available feature that gives the Jetta that premium look, and especially feel. Sit down and you'll instantly want to run your hands across the dash. Sometimes it's the small touches that make the biggest difference.

**And make a lasting impression.**



**Quality.** It's something you just know when you see it, feel it, and—in the case of the Jetta—hear it. From the smallest details to the fit and finish, the Jetta is quality—built from the ground up. Like how the car body gets treated with hot wax flooding, a process that helps support our 12-year Unlimited Mileage Corrosion Perforation Warranty.\* And that goes a really long way in our book.

\*See dealer or warranty booklet for details; some restrictions apply.

# Move in the right circles. And straightaways.

**Performance.** You'll feel like you belong once you're firmly in the driver's seat. Give the engine its first few revs, and you'll know you belong out on the road even more. The Jetta gives you multiple ways to get there with a 2.0L engine. Or choose from one of the other available engines, including a lively 1.8L TSI® engine, a rev-happy 210-hp turbocharged engine. Or an efficient 2.0L TDI® Clean Diesel engine.\* Whichever one you choose, you've never been more upwardly mobile.



Jetta GLI SE shown in Platinum Gray Metallic



## 1.8L TSI

This available lightweight, turbocharged 170-hp engine gives you the best of both worlds. Around town, it's fuel efficient and fun, but when you need some extra oomph, the turbocharger kicks in right when you need it.\*\*

**170**

HORSEPOWER

**184**

LB-FT OF TORQUE



## 2.0L TDI Clean Diesel

Talk about performance. This available turbo-diesel engine gets 46 hwy mpg and gets up to 667 miles on a single tank of fuel.\* So go ahead and take the long way home. But only after you take the long way there.

**150**

HORSEPOWER

**236**

LB-FT OF TORQUE

**Sporty gauge cluster.** The gauges of the Jetta stand out for a reason—they were redesigned to bring the driver closer to the whole driving experience. See what happens when engineers get to test-drive cars on the Autobahn all day?

**Multi-function sporty steering wheel.** You probably recognize this kind of steering wheel found in most race cars, but now you'll see how it inspired every steering wheel found in a Jetta. Designed with a sportier look and feel, it will make you want to take that next corner in no time flat.‡

**6-speed automatic transmission.** Sit back and enjoy the available 6-speed automatic transmission. Or live on the edge of your seat by changing gears manually in Tiptronic® mode. Either way, you won't want to be sitting at a stoplight for long.

\*31 city/46 highway/36 combined mpg (2015 Jetta TDI Clean Diesel 2.0L, manual transmission). 667-mile range based on 46 highway mpg EPA estimates and a 14.5-gallon gas/fuel tank. EPA estimates. Your mileage will vary and depends on several factors, including your driving habits and vehicle condition. \*\*25 city/37 highway/30 combined mpg (2015 Jetta SE 1.8L TSI, automatic transmission). EPA estimates. ‡Your mileage will vary and depends on several factors, including your driving habits and vehicle condition. †Always obey speed and traffic laws.

## Forward thinking, even in reverse.



**Rearview camera.** An available rearview camera helps you see what's behind you when you're backing up or parallel parking. And with the available Blind Spot Monitor with Rear Traffic Alert,\* you're alerted when an approaching object is in your blind spot when in reverse. What a way to stay ahead while backing up.

**Touchscreen navigation.** This available touchscreen navigation system gives you turn-by-turn directions to anywhere you want to go. Even if you're just looking to get lost on a long drive.

**Bluetooth® with audio streaming.** Once your compatible device is synced, you're ready to make calls and stream your music. All while keeping your hands where they belong: on the steering wheel.

\*Do not rely exclusively on Blind Spot Monitor. Always check surrounding traffic and use your turn signal. The feature's function may be limited and depends on many factors. See Owner's Manual for details.



SE shown in Black with 17" Goal accessory wheels



## Stay connected on every getaway.

**Technology.** The Jetta comes complete with an impressive IQ. Find your way back home with the available navigation system with 5-inch color touchscreen. Get lost in your favorite playlist with iPod®/iPhone®\*\* integration. Help make parking and backing out of your driveway a cinch with an available rearview camera. And if you ever need Roadside Assistance, you've got Volkswagen Car-Net® connected car features.\*\* It sounds like a no-brainer to us.



SEL shown in Titan Black

Push-button start with available keyless entry†

Touchscreen sound system†

SiriusXM® Satellite Radio with 3-month trial subscription†

Fender® Premium Audio System†

HomeLink®†

†Feature available on select models.

**Volkswagen Car-Net connected car features.** With available VW Car-Net you can be synced and supported on the go — everything from finding a restaurant to getting Roadside Assistance.\*\* It's never been easier bonding with your Jetta.

**HomeLink.†** Pulling up to your house doesn't mean pulling out the remote. The available HomeLink system enables you to open and close your compatible garage door and front gate, and to turn your home's security system, lighting, or other compatible devices on and off.

**Rain-sensing wipers.†** When it starts to rain, the windshield wipers of the Jetta can automatically turn on. They are also able to adjust their speed according to how much rain is falling. Really, who needs a weather report?

\*\*Requires compatible device.\*\*VW Car-Net services provided by Verizon Telematics, Inc. Available on select models. Trial or paid subscription required to access all features. VW Car-Net services require vehicle cellular connectivity and availability of vehicle GPS signal; certain services may collect location information. See Terms of Service, Privacy Policy, and other details at [www.vw.com/carnet/info](http://www.vw.com/carnet/info). Always pay careful attention to the road, and do not drive while distracted. Roadside Assistance provided by Allstate.®



SEL shown in Titan Black

**Roomy interior.** Bring some friends along for the ride. With plenty of rear seat legroom, the Jetta offers a spacious ride for all passengers. And with 60/40-split folding rear seats, there's no reason to leave anything behind.

**Heated front seats.\*** The Jetta can help keep your seat warm. With three different heat settings for you and your front passenger, these available seats will let you sit in the lap of luxurious warmth.

**Dual-zone automatic climate control.\*** Sometimes it's too hot. And sometimes it's too cold. In the Jetta, it's never a problem with this available dual-zone automatic system where both front passengers can get their temperature just right.

## One size fits all. Comfortably.

**Interior.** Feel free to invite your friends. And their friends too. The Jetta brings comfort to a whole new level. So take your seats, roll down the windows with just a single touch, and let the sun shine in from the available sunroof. Of course, the Jetta won't just fit your friends — the trunk has 15.5 cubic feet of space that will lead you to all-new adventures. We've got to say, we like the way you carry yourself.



Cruise control

6-way power driver seat\*

Power tilting/sliding sunroof\*

Dual-zone automatic climate control\*

Multi-function trip computer

Multi-function sporty steering wheel

Driver seat with adjustable lumbar support\*

V-Tex leatherette seating surfaces\*

Rear seat pass-through\*

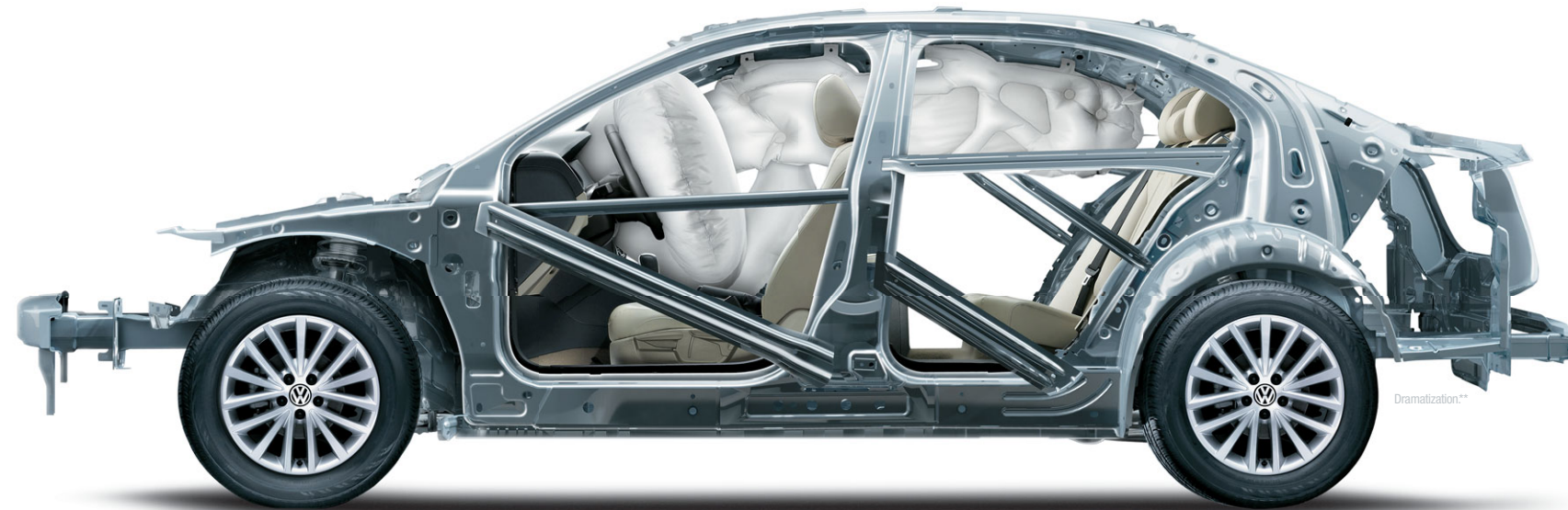
\*Feature available on select models.



# Protection you can count on.

**Safety and Driver Assist.** We know anything can happen out there. That's why we designed safety features to help protect you and your passengers. And now you can get a little more help out there with new Driver Assist features like available Blind Spot Monitor with Rear Traffic Alert. It's engineering like this that earned the Jetta a 2014 IIHS Top Safety Pick+ when equipped with available Forward Collision Warning.\* There are advantages to playing it safe.

2014 IIHS TOP SAFETY PICK+



PASSIVE

Safety cage

Adaptive airbags†

Intelligent Crash Response System (ICRS)††



ACTIVE

Six stability-enhancing systems

Tire Pressure Monitoring System (TPMS)



# For countless situations.

Blind Spot Monitor with Rear Traffic Alert

Forward Collision Warning

\*\*Top Safety Pick+ based on 31 mph side-impact crash test, 40 mph frontal-offset crash test, 20 mph rear-impact test, roof strength testing, and the availability of ESC. Test performed by the Insurance Institute for Highway Safety. For details, visit [www.iihs.org](http://www.iihs.org). See [vw.com](http://vw.com) for more information on safety features. ††This is a dramatization and does not depict what will happen in a collision. Airbags will not inflate simultaneously in real-world collisions, and if multiple bags do deploy, they will be in various stages of inflating/deflating and will never all be inflated at the same time. †Airbags are supplemental restraints only and will not deploy under all crash circumstances. Always use safety belts and seat children only in the rear seat, restraint systems appropriate for their size and age. ††The Intelligent Crash Response System (ICRS) will only activate in a collision where the airbags deploy or safety belt pretensioners activate. †Do not rely exclusively on the Forward Collision Warning system. The system does not provide a braking function. Always drive safely and attentively, and do not wait for the system's alerts before braking. The feature's function may be limited and depends on many factors. See Owner's Manual for details. †Do not rely exclusively on Blind Spot Monitor. Always check surrounding traffic and use your turn signal. The feature's function may be limited and depends on many factors. See Owner's Manual for details.

## Safety Features

**Safety cage.** Front and rear crumple zones help absorb crash energy, while a rigid safety cage helps deflect it away from the driver and passengers. We've got your back, your front, and plenty other sides.

**Intelligent Crash Response System (ICRS).** The Intelligent Crash Response System can automatically disable the fuel pump, unlock the door, and turn on the hazard lights in the event of a collision that activates the vehicle's airbags.† It's how your Jetta looks after you, even when you can't.††

**Adaptive airbags.** Our airbags are designed to adapt to crash severity, and special sensors in the doors help deploy the side airbags faster in the event of a side impact. We're thinking ahead, from many angles.†

**Tire Pressure Monitoring System (TPMS).** The Jetta is sensitive, especially when it comes to its tires. To stay efficient and safe, the Tire Pressure Monitoring System alerts you to a loss of tire pressure so you know when to put more air in.

## Driver Assist Features

**Forward Collision Warning.** The available Forward Collision Warning system can help alert you to what's ahead.‡ If you approach an object too quickly, this system can provide visual and audible warnings. One more way we're looking out for you.

**Blind Spot Monitor with Rear Traffic Alert.** Available proximity sensors can help detect if another vehicle is coming up from behind or alongside you.‡‡ So whether you're backing up or trekking forward, the Jetta will alert you when a car is in your blind spot.

# Jetta Specs

- Standard, no additional cost
- Optional, additional cost
- Not Available

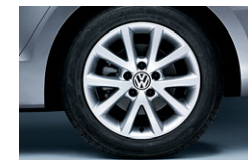
- LP** Available with Lighting Package
- DAP** Available with Driver Assistance Package
- LDAP** Available with Lighting and Driver Assistance Package

Performance	Jetta	TDI	GLI
2.0L, 8-valve, SOHC, in-line 4-cylinder engine; 115 hp, 125 lb-ft of torque	●	-	-
1.8L TSI <sup>1</sup> , 16-valve, DOHC, in-line 4-cylinder turbocharged engine with direct injection and intercooler; 170 hp, 184 lb-ft of torque	○	-	-
2.0L TDI <sup>2</sup> , 16-valve, DOHC, in-line 4-cylinder turbocharged clean diesel engine with common rail direct injection; 150 hp, 236 lb-ft of torque	-	●	-
2.0L TSI, 16-valve, DOHC, in-line 4-cylinder turbocharged engine with direct injection and intercooler; 210 hp, 207 lb-ft of torque	-	-	●
Power-assisted front vented disc brakes with rear solid disc brakes	●	●	●
Multilink rear suspension	●	●	●
Sport suspension	-	-	●
XDS <sup>®</sup> Cross Differential System	-	-	●
Summer performance tires	-	-	○
5-speed manual transmission	●	-	-
6-speed automatic transmission with Tiptronic <sup>®</sup> and Sport mode	○	-	-
6-speed manual transmission	-	●	●
6-speed DSG <sup>®</sup> automatic transmission with Tiptronic and Sport mode	-	○	○
Interior	Jetta	TDI	GLI
Manual air-conditioning	●	●	-
Climatronic <sup>®</sup> dual-zone automatic climate control	○	○	●
Cruise control	●	●	●
Interior ambient lighting	<b>LP</b>	<b>LDAP</b>	●
Multi-function trip computer featuring trip time, trip length, average trip speed, average trip fuel consumption, current fuel consumption, miles to empty, speed warning, current speed, and temperature	●	●	●
2 remote key fobs with lock, unlock, trunk release, and panic button	●	●	●
2 12V power outlets; 1 in front, 1 in rear	●	●	●
6-way manually adjustable front seats	●	●	-
6-way power-adjustable driver's seat	○	○	●
Driver seat with adjustable lumbar support	○	○	●
Sport bolstered comfort seats	○	-	-
Heated front seats	○	●	●
60/40-split folding rear seats	●	●	-
60/40-split folding rear seats with center armrest and pass-through with integrated cupholders	○	○	●
3-spoke, multi-function steering wheel	●	●	-
Leather-wrapped, 3-spoke, multi-function sporty steering wheel, shift knob, and hand brake lever	○	○	●
Cloth seating surfaces	●	●	-
V-Text leatherette seating surfaces	○	○	●
Glovebox with cooling feature	○	○	●
Turn-signal control stalk with 1-tap lane change feature	●	●	●
Design	Jetta	TDI	GLI
Bi-Xenon high-intensity headlights with LED Daytime Running Lights (DRL) and Adaptive Front-lighting System (AFS)	<b>LP</b>	<b>LDAP</b>	○
LED taillights	-	-	●
Foglights	○	○	●
Heated power side mirrors	●	●	●
Power tilting/sliding sunroof with manual sunshade	○	○	●
15" steel wheels with wheel covers	●	-	-
16" steel wheels with wheel covers	-	-	-
16" alloy wheels	○	○	-
17" alloy wheels	○	○	-
18" alloy wheels	-	-	●
Heated windshield washer nozzles	○	●	●
Honeycomb mesh grille with sport side skirts, front and rear valances	-	-	●
Brushed stainless steel pedal caps	-	-	●

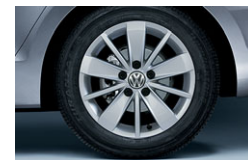
Technology	Jetta	TDI	GLI
Sound system with MP3- and WMA-compatible in-dash CD player and AM/FM radio	●	●	-
Premium VIII touchscreen sound system with HD Radio, <sup>TM</sup> MP3- and WMA- compatible in-dash 6-disc CD changer, and SD memory card reader	○	○	●
RNS 315 navigation system with 5" color touchscreen and SD memory card reader	○	○	○
AUX-in for portable audio players	●	●	●
Media Device Interface (MDI) <sup>*</sup> with iPod <sup>®</sup> cable	○	●	●
Bluetooth <sup>®</sup> with audio streaming for compatible devices	●	●	●
SiriusXM <sup>®</sup> Satellite Radio with 3-month trial subscription	○	●	●
Fender <sup>®</sup> Premium Audio System	○	○	●
Volkswagen Car-Net <sup>®</sup> connected car features**	○	○	●
Keyless access with push-button start	○	○	●
Push-button start	○	○	-
HomeLink <sup>®</sup> garage door opener, integrated into sun visor	○	○	○
Rearview camera	○	○	●
Forward Collision Warning system <sup>†</sup>	<b>DAP</b>	<b>LDAP</b>	-
Blind Spot Monitor with Rear Traffic Alert <sup>††</sup>	<b>DAP</b>	<b>LDAP</b>	○
Safety	Jetta	TDI	GLI
Crash-optimized front end	●	●	●
Immobilizer III theft-deterrent system	●	●	●
Driver and front passenger, front and side thorax airbag supplemental restraint system <sup>‡</sup>	●	●	●
Side Curtain Protection <sup>™</sup> airbags, front and rear <sup>‡</sup>	●	●	●
Front seat safety belt pretensioners with load limiters	●	●	●
LATCH (Lower Anchors and Tethers for CHildren) child seat anchor points	●	●	●
Electronic Stability Control (ESC), Anti-Slip Regulation (ASR), Electronic Differential Lock (EDL), and Engine Brake Assist (EBA)	●	●	●
Anti-lock Braking System (ABS), Electronic Brake-pressure Distribution (EBD), and Hydraulic Brake Assist (HBA)	●	●	●
Intelligent Crash Response System (ICRS) <sup>†††</sup>	●	●	●
Tire Pressure Monitoring System (TPMS)	●	●	●
Quality	Jetta	TDI	GLI
12-year/unlimited mileage Limited Warranty Against Corrosion Perforation <sup>§</sup>	●	●	●
5-year/60,000-mile (whichever occurs first) Powertrain Limited Warranty <sup>§</sup>	●	●	●
3-year/36,000-mile (whichever occurs first) New Vehicle Limited Warranty <sup>§</sup>	●	●	●
3-year/36,000-mile (whichever occurs first) Roadside Assistance <sup>§§</sup>	●	●	●
1-year/10,000-mile (whichever occurs first) no-charge scheduled Carefree Maintenance <sup>®</sup> Program <sup>¶</sup>	●	●	●

Dimensions	Jetta	TDI	GLI
Wheelbase	104.4 inches (2,651 mm)		
Front track	60.4 inches (1,535 mm)		
Rear track	60.3 inches (1,532 mm)		
Length	182.2 inches (4,628 mm)		
Width	70.0 inches (1,778 mm)		
Height	57.2 inches (1,453 mm)		
Ground clearance	5.5 inches (139 mm)/ GLI 4.9 inches (124 mm)		
Trunk capacity	15.5 cu. ft.		

# Standard Wheels



16" Sedona



16" Arlington



17" Lancaster



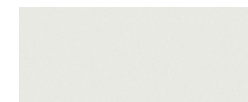
17" Joda



18" Mallory

- SE
- ⦿ SE w/Connectivity
- ⦿ SE w/Connectivity & Navigation
- SEL
- ⦿ Jetta GLI

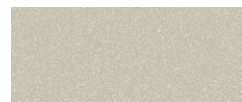
# Exterior Colors



Pure White



Reflex Silver Metallic



Moonrock Silver Metallic



Toffee Brown Metallic



Platinum Gray Metallic



Tornado Red



Silk Blue Metallic



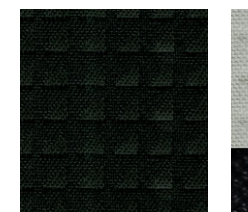
Black



Deep Black Pearl

# Interior

Cloth

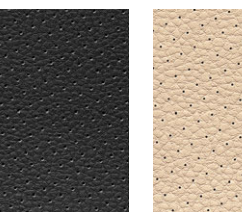


Titan Black

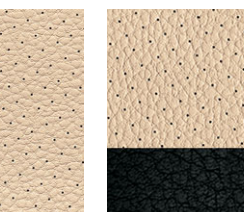


Ceramique and Titan Black Two-Tone

V-Text Leatherette



Titan Black



Cornsilk Beige



Cornsilk Beige and Titan Black Two-Tone



Titan Black and Carbon Two-Tone

# Packages

## Lighting Package

Bi-Xenon high-intensity headlights with LED Daytime Running Lights (DRL) and Adaptive Front-lighting System (AFS), interior ambient lighting.

Available on SE with Connectivity & Navigation, SEL

## Driver Assistance Package

Forward Collision Warning, Blind Spot Monitor with Rear Traffic Alert.

Available on SE with Connectivity & Navigation, SEL

## Lighting and Driver Assistance Package

Bi-Xenon high-intensity headlights with LED Daytime Running Lights (DRL) and Adaptive Front-lighting System (AFS), interior ambient lighting, Forward Collision Warning, Blind Spot Monitor with Rear Traffic Alert.

Available on TDI SEL only

<sup>1</sup>Requires compatible device. <sup>2</sup>\*\*VW Car-Net services provided by Verizon Telematics, Inc. Trial or paid subscription required to access all features. VW Car-Net services require vehicle cellular connectivity and availability of vehicle GPS signal; certain services may collect location information. See Terms of Service, Privacy Policy, and other details at [www.vw.com/carnet/info](http://www.vw.com/carnet/info). Always pay careful attention to the road, and do not drive while distracted. <sup>3</sup>Do not rely exclusively on the Forward Collision Warning system. The system does not provide a braking function. Always drive safely and attentively, and do not wait for the system's alerts before braking. The feature's function may be limited and depends on many factors. See Owner's Manual for details. <sup>4</sup>Airbags are supplemental restraints only and will not deploy under all crash circumstances. Always use safety belts and seat children only in the rear, using restraint systems appropriate for their size and age. <sup>5</sup>Do not rely exclusively on Blind Spot Monitor. Always check surrounding traffic and use your turn signal. The feature's function may be limited and depends on many factors. See Owner's Manual for details. <sup>6</sup>Airbags are supplemental restraints only and will not deploy under all crash circumstances. Always use safety belts and seat children only in the rear, using restraint systems appropriate for their size and age. <sup>7</sup>The Intelligent Crash Response System (ICRS) will only activate in a collision where the airbags deploy or safety belt pretensioners activate. Not all collisions cause airbags to deploy or safety belt pretensioners to activate. <sup>8</sup>See dealer or warranty booklet for details, some restrictions apply. <sup>9</sup>Roadside Assistance provided by Allstate. <sup>10</sup>The Volkswagen Carefree Maintenance Program covers the vehicle's first scheduled maintenance for one year or 10,000 miles, whichever occurs first, only on 2015 models. This program does not apply to 2009-2014 models. Some limitations apply. See dealer or vehicle maintenance program booklet for details, including scheduled service intervals.

# Jetta Accessories



Das Auto.



To see more accessories for your VW, visit [www.parts.vw.com](http://www.parts.vw.com) or see your Consultant.



18" Motorsport Wheel



MojoMats® and Monster Mats®



Splash Guards



Door Sill Protection



Base Carrier Bars and Bike Holder Attachment



Pedal Caps



Rear Lip Spoiler



Chrome Exhaust Tips



**Volkswagen Carefree Maintenance<sup>®</sup> for 1 Year or 10,000 Miles.**  
Whichever occurs first. 2015 models. Some restrictions. See dealer or program for details.

Accessories installed prior to new vehicle's delivery are covered for the new vehicle's Limited Warranty period. Accessories installed by a Volkswagen authorized dealer during the new vehicle's Limited Warranty period are covered for the greater of: the remainder of the new vehicle's Limited Warranty period, or 12 months or 12,000 miles, whichever occurs first. The Volkswagen Carefree Maintenance Program covers the vehicle's first scheduled maintenance for one year or 10,000 miles, whichever occurs first, only on 2015 models. This program does not apply to 2009-2014 models. Some limitations apply. See dealer or vehicle maintenance program booklet for details, including scheduled service intervals.

[vw.com](http://vw.com)

©2014 Volkswagen of America, Inc. Printed in the U.S.A. Volkswagen of America, Inc., believes the specifications in this brochure to be correct at the time of printing. Specifications, standard equipment, options, fabrics, and colors are subject to change without notice. Some features may be unavailable when your vehicle is built. Some vehicles are pictured with options that may be available at extra cost or may not be available on some models. Ask your dealer about availability of options and verify that the vehicle you ordered includes the equipment you ordered. Tires are supplied and warranted by their manufacturer. "Volkswagen," the Volkswagen logo, "Das Auto," "Jetta," "TDI," "GLI," "TSI," "DSG," and "Think Blue" are registered trademarks of Volkswagen AG. "Carefree Maintenance," the Carefree Maintenance logo, "Climatronic," and "Car-Net" are trademarks or registered trademarks of Volkswagen Group of America, Inc. "Tiptronic" is a registered trademark of Dr. Ing. h.c. F. Porsche AG. "FSI" is a registered trademark of Audi AG. FENDER is a trademark of FMIC. All rights reserved. "Bluetooth" is a registered trademark of Bluetooth SIG, Inc. "iPod" is a registered trademark of Apple, Inc. All rights reserved. SiriusXM Satellite Radio, SiriusXM Traffic, and SiriusXM Travel Link subscriptions are sold separately or as a package after trial period and are continuous until you call SiriusXM at 1-866-635-2349 to cancel. See Customer Agreement for complete terms and more information at [www.siriusxm.com](http://www.siriusxm.com). ©2014 Sirius XM Radio Inc. Sirius, XM, and all related marks and logos are trademarks of Sirius XM Radio Inc. Volkswagen DVD navigation depends on the signals from the worldwide Global Positioning Satellite network. The vehicle's electrical system, and existing wireless and satellite technologies, must be available and operating properly for the system to function. The system is designed to provide you with suggested routes to location addresses, destinations, and other points of interest. Changes in street names, construction zones, traffic flow, points of interest, and other road system changes are beyond the control of Volkswagen of America, Inc. Complete detailed mapping of lanes, roads, streets, toll roads, highways, etc., is not possible, therefore you may encounter discrepancies between the mapping and your actual location. Please rely on your individual judgment in determining whether or not to follow a suggested navigation route. Periodically, the mapping is updated and a new DVD will be required in order to maintain the latest navigation information available to us. These will be available for purchase from time to time at additional cost. For further information regarding any Volkswagen model, please call 1-800-DRIVE-VW or just look us up at [vw.com](http://vw.com). VW15JSBUS