

E-Series

1

0

0

2

- E-Series
- Exterior Features
- Interior Features
- Colors
- Dimensions
- Engine
- Towing/Payload



E-Series

If the plan involves getting comfortably from one place to another as a group, the carrying and towing capacities of the 2001 Ford E-150 Traveler are just right. Contrary to popular opinion, you can, indeed, take it with you.

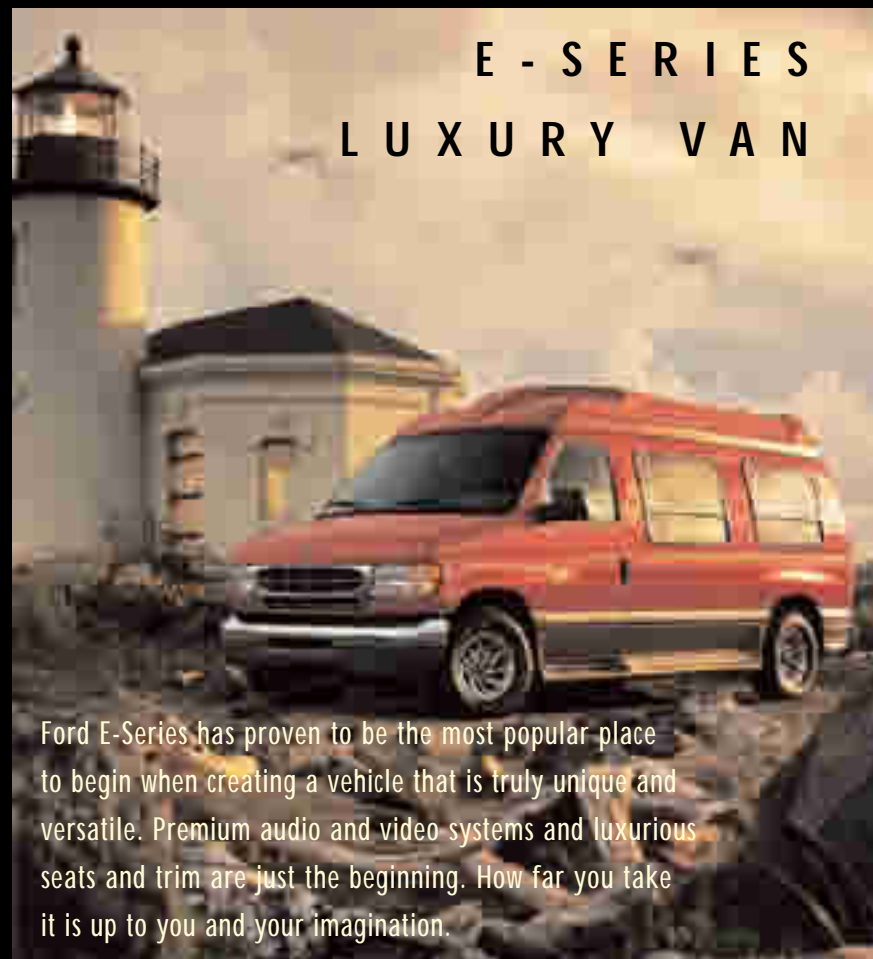
E - 1 5 0 T R A V E L E R



E - 1 5 0 T R A V E L E R

Have a seat in the lap, lap, lap, lap, lap, lap, lap of luxury. Included in the optional E-150 Traveler Package is 7-passenger leather-trimmed seating in Medium Parchment, power driver's seat with manual lumbar, leather-wrapped steering wheel, premium AM/FM stereo/cassette/single CD player/clock, AutoVision® (video cassette player with two 6" color LCD monitors mounted in the headliner), cargo organizer, overhead console with compass, air temperature display and storage for a garage door opener and sunglasses.

E - S E R I E S L U X U R Y V A N



Ford E-Series has proven to be the most popular place to begin when creating a vehicle that is truly unique and versatile. Premium audio and video systems and luxurious seats and trim are just the beginning. How far you take it is up to you and your imagination.

E - SERIES RECREATIONAL VANS



INTERIOR DECORATORS NO LONGER DO THEIR BEST WORK AROUND THE HOUSE. SEE YOUR LOCAL DEALER FOR A SELECTION OF LUXURY VANS AVAILABLE FROM FORD AUTHORIZED VAN CONVERTERS.

RECREATIONAL VAN	E-150	E-350 SUPER DUTY	E-350 SUPER DUTY EXTENDED
------------------	-------	------------------	---------------------------

RV Plus Package: OWL tires, 4 aluminum wheels, (E-150) 4 - 16" sport wheel covers, (E-250) leather-wrapped steering wheel, swing-out side/ fixed rear door glass, auxiliary heater/AC Connector Package with rear controls, 4.6L engine (E-150)/5.4L engine (E-250), electronic AM/FM stereo/clock/cassette/CD (dual media), back door lock switch

Auxiliary Heater-A/C Connector Package	0	0	0
Auxiliary Heater-A/C Connector Package (w/rear A/C controls)	0	0	0

Standard S Optional 0

RECREATIONAL VANS

	E-150	E-250	E-350 SUPER DUTY
Dual captain's chairs without trim	0	0	0
Power driver's seat	0	0	0
Seats not included (manual pedestal)	S	S	S
Seats not included (power pedestal)	0	0	0

APPEARANCE/COMFORT/CONVENIENCE

Air conditioning	S	S	S
Deluxe engine cover console	S	S	S
Power windows/door locks	S	S	S
Sliding side cargo door	0	0	0
Fixed side/ fixed rear cargo door glass	S	S	S
Swing-out 60% side cargo door glass/ fixed rear cargo door glass	0	0	0
Privacy Glass	0	0	0
All-around windows	0	0	-
Light and Convenience Group (1)	S	S	S
Power sail-mount mirrors	S	S	S
Speed control/tilt steering wheel	S	S	S

SAFETY AND SECURITY

Second Generation driver and passenger airbag supplemental restraint systems [†]	S	S	S
Power brakes with 4-wheel anti-lock system (4-wheel disc brakes with E-350 Super Duty)	S	S	S
Remote Keyless Entry System/panic alarm	S	S	S
Belt-Minder System	S	S	S

AUDIO SYSTEMS

AM/FM stereo/cassette, six premium speakers, digital clock	S	S	S
Premium AM/FM stereo/cassette/single CD player, six premium speakers, digital clock	0	0	0

PERFORMANCE

4.2L V6/4-speed automatic OD	S	S	-
4.6L Triton™ V8/4-speed automatic OD	0	-	-
5.4L Triton V8/4-speed automatic OD	0	0	-
5.4L Triton V8/electronic 4-speed auto. OD	-	-	S
6.8L Triton V10/electronic 4-speed auto. OD	-	-	0
7.3L Power Stroke® V8 turbo diesel/electronic 4-speed automatic OD	-	-	0
Heavy-duty 130-amp alternator	S	S	S
Dual system 115-amp alternators (with 7.3L turbo diesel engine only)	-	-	0
Heavy-duty auxiliary battery	0	0	0
Engine block heater	0	0	0
Handling Package (2)	S	S	S
Class I Trailer Towing Package (3)	S	S	S
Class II/III/IV Trailer Towing Package (4)	0	0	0
Full function auxiliary idle control	-	-	0
8600# GVWR	-	0	-
Front GAWR-one up	0	0	0
Clean Fuel Fleet LEV option	0	0	0
Auxiliary Fuel Port	0	0	0

Standard S Optional 0

*May only be ordered with Exterior Upgrade Package.

†Always wear your safety belt and secure children in the rear seat.

(1) Courtesy light switches - all doors, warning chime, headlights-on audible alert, illuminated entry.

(2) Front stabilizer bar and heavy duty front/rear shock absorbers.

(3) 4-pin trailer wiring harness

(4) 7-pin trailer wiring harness (blade style female connector) with bumper bracket, electric brake controller tap-in capability, relay system for backup/B+ /running lights, trailer tow hitch receiver.

E-SERIES WAGON	E-150		E-350 SUPER DUTY		E-350 SUPER DUTY EXTENDED	
	XL	XLT	XL	XLT	XL	XLT
EXTERIOR						
sliding side cargo door	0	0	0	0	0	0
Bright swing-out recreational mirrors	0	0	0	0	0	0
Power sail-mount mirrors	-	S	-	S	-	S
Privacy Glass	0	0	0	0	0	0
Chrome rear step bumper	0*	0	0*	0	0*	0
Light charcoal rear step bumper	0	-	0	-	0	-
Full-length running boards	0	0	0	0	0	0
Exterior Upgrade Package (1)	0	-	0	-	0	-
PERFORMANCE						
4.2L V6/4-speed automatic OD	S	S	-	-	-	-
4.6L Triton™ V8/4-speed automatic OD	0	0	-	-	-	-
5.4L Triton V8/4-speed automatic OD	0	0	-	-	-	-
5.4L Triton V8/electronic 4-speed automatic OD	-	-	S	S	S	S
5.4L Triton natural-gas V8/electronic 4-speed automatic OD	-	-	0	0	0	0
6.8L Triton V10/electronic 4-speed automatic OD	-	-	0	0	0	0
7.3L Power Stroke® V8 turbo diesel/electronic 4-speed automatic OD	-	-	0	0	0	0
Dual system 115-amp alternators (7.3L turbo diesel engine only)	-	-	-	0	-	0
Heavy-duty auxiliary battery	-	0	-	0	-	0
Engine block heater	0	0	0	0	0	0
Class I Trailer Towing Package (2)	S	S	S	S	S	S
Class II/III/IV Trailer Towing Package (3)	-	0	0	0	0	0
WHEELS						
15" 5-lug steel wheel with bright wheel cover	S	-	-	-	-	-
16" 8-lug steel wheel with bright wheel cover	-	-	S	-	S	-
15" 5-lug steel wheel with full wheel cover	0 ⁽⁴⁾	S	-	-	-	-
16" 8-lug steel wheel with full sport wheel cover	-	-	0 ⁽⁴⁾	S	0 ⁽⁴⁾	S
15" 5-lug bright cast aluminum wheel	-	0 ⁽⁵⁾	-	-	-	-
15" 5-lug bright cast aluminum wheel with colored-keyed accents (Available in Traveler Package only)	-	0	-	-	-	-
Full-sized steel spare wheel	S	S	S	S	S	S

Standard S Optional O

*May only be ordered with Exterior Upgrade Package in XL.

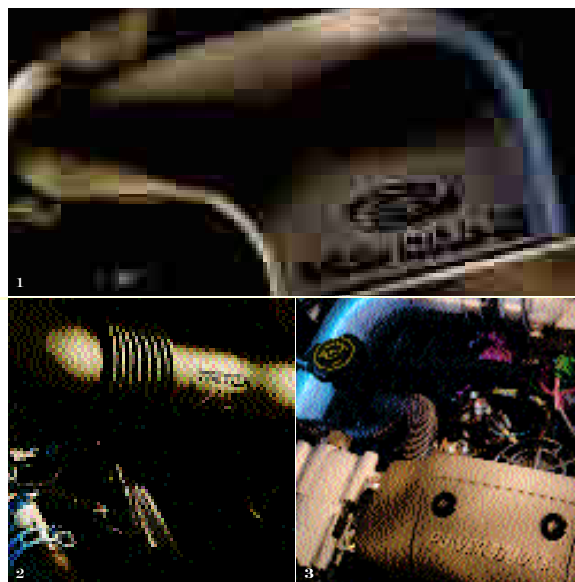
(1) Front and rear chrome bumpers, chrome grille, aerodynamic halogen headlamps, full wheel covers (with E-150); sport wheel covers (with E-350 Super Duty).

(2) 4-pin trailer wiring harness.

(3) 7-pin trailer wiring harness, electric brake controller tap-in capability, relay system for back-up/B+/running lights, frame-mounted hitch receiver.

(4) Available on XL with Exterior Upgrade Package only.

(5) Available as a stand alone option or included with the Chateau Appearance Package



1. OPT FOR A 5.4-LITER TRITON™ V8 THAT CAN COMFORTABLY TOW UP TO 7,000 POUNDS WITH E-SERIES WAGON WHEN PROPERLY EQUIPPED.

2. CONSIDER THE OPTIONAL 6.8L TRITON V10. THAT'S RIGHT, A V10. DO WE NEED TO SAY MORE?

3. OPTIONAL 7.3L POWER STROKE™ TURBO DIESEL. BRUTE FORCE.



15-inch full wheel covers are shining accent pieces to the E-150 XLT Wagon or E-150 RV Van.



16-inch full sport wheel covers add a definitely racy look to E-350 Super Duty carrying and towing capabilities.



15-inch bright cast aluminum wheels are an option that'll add sparkle to any night out.



Outside, good-looking wheels put a nice spin on the luxury inside of the optional E-150 Traveler Package.

E-SERIES MODEL AVAILABILITY



E-150 XL WAGON



E-150 XLT WAGON



E-150 CHATEAU WAGON



E-150 TRAVELER

MAJOR STANDARD FEATURES

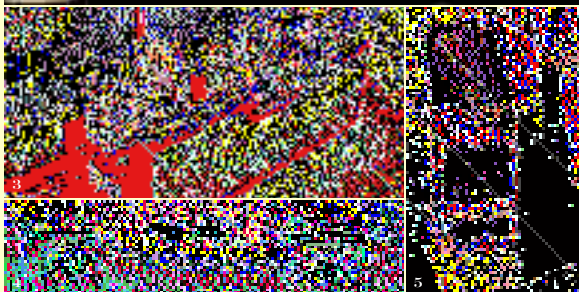
XL Wagon features dual front bucket seats, electronic AM/FM stereo/clock, air conditioning, deluxe engine cover console, 12-volt powerpoint, interval wipers, front dome light, Class I trailer towing package, full length vinyl floor mat.

XLT Wagon includes the XL features plus dual front captain's chairs, color-keyed cloth rear seats, electronic AM/FM stereo/cassette/clock, power door locks/windows, color-keyed full length carpeting, speed control/tilt steering wheel.

XLT with Chateau Appearance Package offers everything that XLT offers standard plus leather-wrapped steering wheel, lower accent two-tone paint, 7-passenger cloth seating (includes quad captain's chairs with manual lumbar driver's seat).

XLT with E-150 Traveler Package features unique two-tone paint, color-keyed wheels, high capacity air conditioning, class II/III/IV trailer tow package, 7-passenger leather-trimmed seating, leather-wrapped steering wheel, AutoVision™, cargo organizer, overhead console and a premium AM/FM stereo/cassette/singleCD player.

E - SERIES INTERIOR FEATURES



1. AMPLE ROOM FOR THE CHAMBER-MUSIC OCTET.

AVAILABLE 12-PASSENGER SEATING SHOWN.

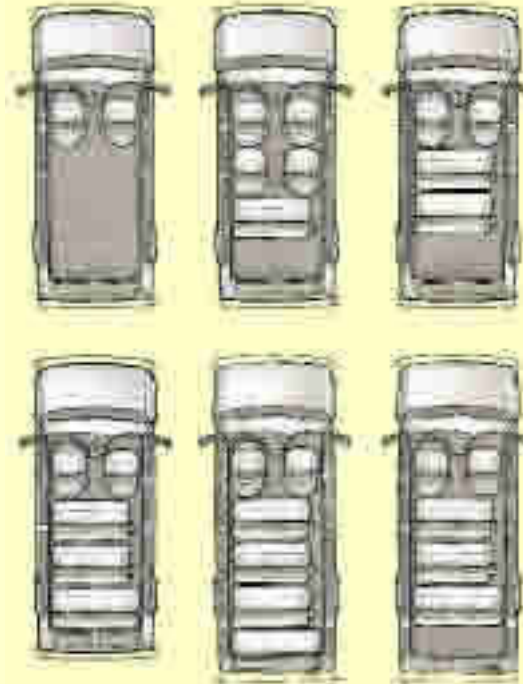
2. THIRD-ROW BENCH SEAT VERSATILITY: UP, DOWN, OR OUT.

3. HANDY CARGO ORGANIZER KEEPS THINGS ORDERLY,
INCLUDED WITH THE OPTIONAL TRAVELER PACKAGE.

4/5. THE AUTOVISION® FAMILY ENTERTAINMENT SYSTEM
INCLUDES TWO FOLD-DOWN 6.4" COLOR MONITORS,
REMOVEABLE VIDEO CASSETTE PLAYER, REMOTE CONTROL,
STEREO AUDIO THROUGH VEHICLE SPEAKERS, 2-12V
POWERPOINTS, 2 HEADPHONES W/800RDS, SIDE POCKET
STORAGE FOR TAPES. INCLUDED WITH THE OPTIONAL
TRAVELER PACKAGE.



1. CAPTAIN'S CHAIRS, FOR THE NORTH, SOUTH, EAST AND WEST OF THE COMPASS OR THE BRIDGE TABLE.
2. HERE'S ONE L.P. THAT CLEARLY TELLS IT LIKE IT IS.
3. THE WHEELCHAIR LIFT IS JUST ONE EXAMPLE OF THE VERSATILITY E-SERIES OFFERS IN TAKING PEOPLE MOBILE. ASK YOUR DEALER ABOUT FORD'S MOBILITY MOTORING PROGRAM. TO LEARN HOW FORD IS ASSISTING PERSONS WITH PHYSICAL DISABILITIES CONTACT 1-800-952-2248 OR VISIT OUR WEB SITE: WWW.FORD.COM/MOBILITYMOTORING.



1. ANY WAY YOU SLICE IT, E-SERIES HAS A SEATING CONFIGURATION TO MEET YOUR NEEDS, WHETHER IT'S FOR SEATING FOR UP TO FIFTEEN PEOPLE OR FOR A FEW PEOPLE PLUS A SMALL AMOUNT OF CARGO.



1. THE XL WAGON'S COMFORTABLE BUCKET SEATS ALSO COME IN MEDIUM GRAPHITE CLOTH.
2. VINYL IN MEDIUM GRAPHITE IS ONE TRIM CHOICE IN THE XL WAGON'S FRONT BUCKET SEATS.
3. XLT WAGON OFFERS DUAL FRONT CLOTH CAPTAIN'S CHAIRS IN MEDIUM GRAPHITE.
4. CLOTH TRIM IN MEDIUM PARCHMENT.
5. MEDIUM PARCHMENT LEATHER-TRIM IS UNIQUE TO TRAVELER.

E-SERIES WAGON

INTERIOR FEATURES

SEATS

	E-150 XL	XLT	E-350 SUPER DUTY XL	XLT	E-350 SUPER DUTY EXTENDED XL	XLT
Chateau (cloth) 7 passengers: quad captain's chairs; one 3-passenger rear bench seat	-	0	-	S	-	-
Traveler (leather-trimmed) 7 passengers: quad captain's chairs; one 3-passenger rear bench seat	-	0	-	-	-	-
8 passengers: two front bucket seats; two 3-passenger rear bench seats	S	-	0	-	-	-
8 passengers: two front captain's chairs; two 3-passenger rear bench seats	-	S	-	0	-	-
12 passengers: two front bucket seats; two 3-passenger rear bench seats; one 4-passenger bench seat	-	-	S	-	0	-
12 passengers: two front captain's chairs; two 3-passenger rear bench seats; one 4-passenger bench seat	-	-	-	S	-	0
15 passengers: two front bucket seats; three 3-passenger rear bench seats; one 4-passenger bench seat	-	-	-	-	S	-
15 passengers: two front captain's chairs; three 3-passenger rear bench seats; one 4-passenger bench seat	-	-	-	-	-	S

APPEARANCE/COMFORT/CONVENIENCE

Air conditioning (front only)	S	S	S	S	S	S
High-capacity air conditioning (front and rear)	0	S	0	S	S	S
Power driver's seat	-	0	-	0	-	0
Deluxe engine cover console	S	S	S	S	S	S
Power windows and door locks	0	S	0	S	0	S
Speed control and tilt steering wheel	0	S	0	S	0	S
Interior Upgrade Package (1)	0	-	0	-	0	-
Dual illuminated sun visors	-	S	-	S	-	S
Full length vinyl floor mat	S	0	S	0	S	0

SAFETY/SECURITY

Second Generation driver and passenger airbag supplemental restraint system*	S	S	S	S	S	S
Power brakes with 4-wheel anti-lock system (4-wheel disc with E-350 Super Duty)	S	S	S	S	S	S
Remote Keyless Entry System/panic alarm	0	0	0	0	0	0
Belt-Minder System	S	S	S	S	S	S

AUDIO/VIDEO SYSTEMS

AutoVision® (E-150 Traveler only)	-	0	-	-	-	-
AM/FM stereo, four premium speakers, digital clock	S	-	S	-	S	-
AM/FM stereo, six speakers, digital clock	-	S	-	S	-	S
AM/FM stereo/cassette, four speakers (six speakers with XLT), digital clock	0	0	0	0	0	0
Premium AM/FM stereo/cassette/single CD player, six premium speakers (Dual Media), digital clock	-	0	-	0	-	0

Standard S Optional 0

(1) Full-length XLT carpeting, XLT side/rear cargo door trim panels, cloth bucket seats, dash absorber, illuminated entry, headlights-on audible alert, warning chime.

*Always wear your safety belt and secure children in the rear seats.

Following publication of the catalog, certain changes in standard equipment, options and the like, or product delays, may have occurred which would not be included in these pages. Your Ford Dealer is your best source for up-to-date information. Ford Division reserves the right to change product specifications at any time without incurring obligations.

E - SERIES

EXTERIOR COLORS



CHARCOAL GREEN



LIGHT PARCHMENT GOLD



OXFORD WHITE



CHESTNUT



SILVER



TOREADOR RED



BLACK



TRUE BLUE



DEEP EMERALD GREEN



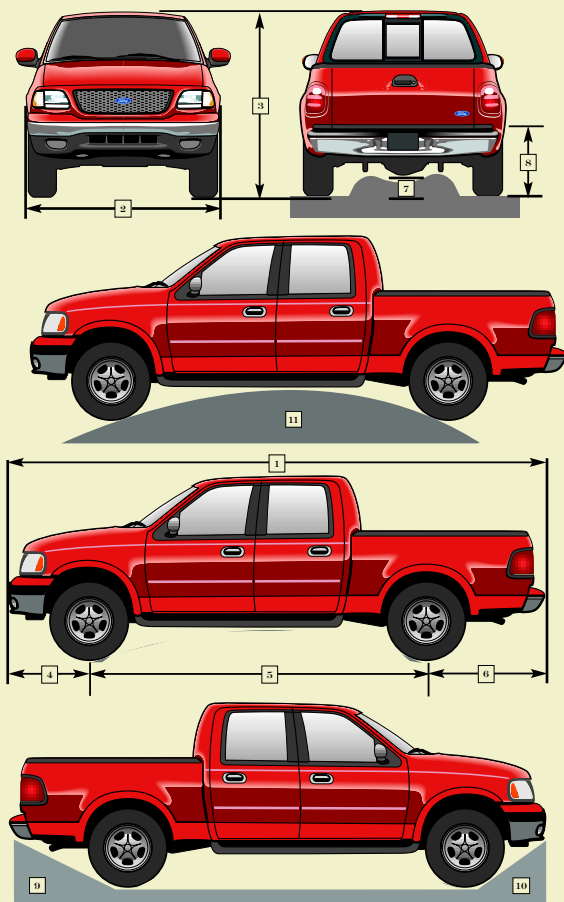
SCHOOL BUS YELLOW

Exterior Colors/Interior Trim	Medium Graphite	Medium Parchment
Chestnut Clearcoat Metallic*		•
Toreador Red Clearcoat Metallic	•	•
School Bus Yellow Clearcoat Metallic**	•	
True Blue Clearcoat Metallic	•	•
Light Parchment Gold Clearcoat Metallic*		•
Deep Emerald Green Clearcoat Metallic	•	•
Silver Clearcoat Metallic	•	
Black Clearcoat	•	•
Oxford White Clearcoat	•	•
Charcoal Green Clearcoat (Traveler only)		•

*Available with XLT Wagon and Recreational Van only **Available with XL Wagon and Commercial Van only
 NOTE: See your dealer for available color, two-tone paint and trim combinations.
 Vehicles shown may include optional equipment.

DIMENSIONS	E-150 WAGON/VAN	E-350 EXTENDED WAGON/VAN
1 Overall Length - Inches 4x2 4x4	211.9" -	231.9" -
2 Overall Width - Inches 4x2 4x4	79.3" -	79.3" -
3 Overall Height - Inches (empty) 4x2 4x4	80.9" -	84.1" -
4 Front Overhang - Inches 4x2 4x4	30.1" -	30.1" -
5 Wheelbase - Inches 4x2 4x4	138.0" -	138.0" -
6 Rear Overhang - Inches 4x2 4x4	43.8" -	63.8" -
7 Axle Clearance - Inches (empty, rear) 4x2 4x4	- -	- -
8 Load Floor Height - Inches (empty) 4x2 4x4	26.9" -	30.2" -
9 Angle of Departure - Degrees (empty) 4x2 4x4	13.4° -	10.8° -
10 Angle of Approach - Degrees (empty) 4x2 4x4	24.4° -	29.7° -
11 4x2 4x4	- -	- -

Dimensions are for reference only, all wheelbases and box styles/lengths are not represented, see dealer for complete details on all models.



ENGINES	SPECIFICATIONS	E-SERIES
4.2L OHV V6	Compression Ratio: Horsepower SAE net: Torque SAE net:	9.2:1 191 @ 4,800 rpm 244 @ 2,750 rpm
4.6L SEFI V8	Compression Ratio: Horsepower SAE net: Torque SAE net:	9.0:1 215 @ 4,450 rpm* 290 @ 3,250 rpm*
5.4L SEFI V8	Compression Ratio: Horsepower SAE net: Torque SAE net:	9.0:1 255 @ 4,500 rpm 350 @ 2,500 rpm
6.8L SEFI V10	Compression Ratio: Horsepower SAE net: Torque SAE net:	9.0:1 305 @ 4,250 rpm 420 @ 3,250 rpm
7.3L V8 Turbo Diesel	Compression Ratio: Horsepower SAE net: Torque SAE net:	17.5:1 215 @ 2,600 rpm 425 @ 1,800 rpm

*Based on 2000 model year. **With automatic transmission. 235 hp @ 2600 rpm, 1800 rpm w/ manual transmission (275 hp @ 2800 rpm, torque 520 ft. lbs. @1600 w/ manual transmission - late availability).

Built Ford Tough can be best defined by our engines, which have always been able to stand up to the demands of everyday life. And our wide range of gasoline engines, from a 2.5L I4 to the 6.8L V10, put out the muscle you need when you need it the most. Or maybe you need a diesel that can flat-out handle the big work. The available 7.3L PowerStroke® is not only the largest diesel in the Super Duty F-250/350 class, as well as E-Series, it's turbocharged, handling virtually any task you throw its way.

MAXIMUM TOWING CAPABILITIES*

E-Series

E-150 Wagon



6,600 lbs.

E-350 Super Duty Wagon



10,000 lbs.

E-350 Super Duty Extended Wagon



10,000 lbs.

*Conventional towing, see your dealer for F-Series fifth wheel towing capacities.

MAXIMUM PAYLOAD CAPABILITIES

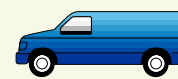
E-Series

E-150 Van



1,920 lbs.

E-250 Van



3,345 lbs.

E-350 Super Duty Van



4,045 lbs.

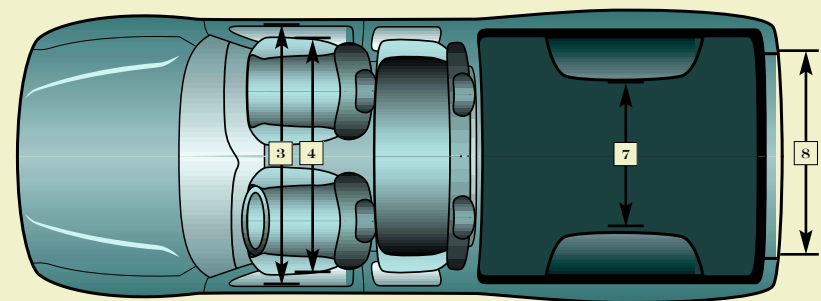
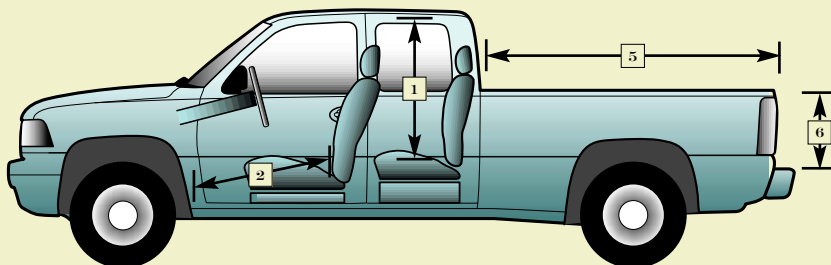
INTERIOR DIMENSIONS

	E-SERIES WAGON/VAN	E-SERIES EXTENDED WAGON/VAN
Adult seating capacity	8/2	15/2
1 Head room - Front	42.5"/42.5"	42.5"/42.5"
Second row	40.2"/-	40.2"/-
2 Leg room - Front	40.0"/40.0"	40.0"/40.0"
Second row	36.9"/-	36.9"/-
3 Shoulder room - Front	68.4"/68.4"	68.4"/68.4"
Second row	70.5"/-	70.5"/-
4 Hip room - Front	65.6"/65.6"	65.6"/65.6"
Second row	66.5"/-	66.5"/-

BOX/CARGO DIMENSIONS

5A Nominal Box Length* - SWB/LW	-	-
5B Cargo Length	120.4"	140.4"
6 Cargo Height* to rail/ceiling	52.5"	52.5"
7 Width at Wheelwells*	66.4"	66.4"
8 Tailgate opening width*	-	-
Box Volume* - SWB/LWB (cu. ft.)	-	-
Door opening height: rear	48.3"	48.3"
Door opening width: rear	51.4"/54.4"	51.4"/54.4"

*Box dimensions for Pickup Trucks based on Styleside only.



FORD TRUCKS ARE DESIGNED TO ENSURE BOTH DRIVERS AND PASSENGERS ENJOY COMFORTABLE, USEABLE SPACE NO MATTER WHAT SIZE INTERIOR.

1. HEAD ROOM IS MEASURED FROM THE SEAT TO THE HEADLINER.

2. LEG ROOM IS MEASURED FROM THE HIP POINT TO UNDEPRESSED ACCELERATOR.

3. SHOULDER ROOM REFLECTS DISTANCE FROM DOOR TO DOOR AT SILL.

4. HIP ROOM CAPTURES DISTANCE DOOR TO DOOR AT SEAT LEVEL.

5A. NOMINAL BOX LENGTH MEASURES THE NOMINAL LENGTH OF THE PICKUP BOX.

5B. CARGO LENGTH MEASURES THE DISTANCE FROM THE BACK OF THE 1ST ROW SEAT TO THE FRONT OF THE REAR CARGO DOOR CLOSED.

6. CARGO HEIGHT: IN PICK-UP MEASURES FLOOR TO RAIL HEIGHT. IN E-SERIES VANS/WAGONS IT MEASURES FLOOR TO CEILING. **7. WIDTH AT WHEEL WELLS** IS THE DISTANCE BETWEEN THE REAR WHEEL INTRUSIONS IN THE CARGO AREA.

8. TAILGATE OPENING IS THE HORIZONTAL DISTANCE MEASURED AT THE FLOOR WHEN THE TAILGATE IS OPEN. **BOX VOLUME** MEASURES THE CUBIC CAPACITY OF THE CARGO AREA. FORD TRUCKS ARE KNOWN FOR THEIR ABILITY TO WORK AT MAXIMUM CAPACITY UNTIL THE JOB IS DONE. AND SOME NOW FEATURE THE OPTIONAL BOX-EXTENDER THAT ROTATES TO LENGTHEN THE BOX BY ALMOST TWO FEET. THE BIGGER THE BOX, THE QUICKER THE JOB IS DONE.

FORD CREDIT'S RED CARPET LEASE.

MANY LEASE MANAGERS HAVE COMPLETED MANY HOURS OF TRAINING IN A RED CARPET LEASE PROGRAM DESIGNED TO MAKE US THE BEST IN THE BUSINESS. WE THINK YOU'LL FIND A RED CARPET LEASE IS THE BEST WAY TO LEASE.

UNDER THE NEW VEHICLE LIMITED WARRANTY, YOU'LL RECEIVE BUMPER-TO-BUMPER NO-DEDUCTIBLE COVERAGE ON YOUR NEW FORD VEHICLE FOR 3 YEARS/36,000 MILES. YOU'LL ALSO RECEIVE UNLIMITED-MILEAGE, NO-DEDUCTIBLE CORROSION PERFORATION COVERAGE FOR FIVE YEARS. ASK YOUR FORD DEALER FOR A COPY OF THIS WARRANTY.

DURING ITS 3-YEAR/36,000-MILE LIMITED WARRANTY PERIOD, EVERY NEW FORD VEHICLE INCLUDES THE ASSURANCE AND SUPPORT OF A 24-HOUR EMERGENCY ROADSIDE ASSISTANCE PROGRAM. ROADSIDE ASSISTANCE INCLUDES SUCH SERVICES AS FUEL DELIVERY, TIRE CHANGES, JUMP STARTS, AND HELP WHEN YOU ARE LOCKED OUT OF YOUR VEHICLE. ASK YOUR FORD DEALER FOR COMPLETE DETAILS ABOUT THIS PROGRAM.

COMPLETE INFORMATION ON OUR VEHICLE LINEUP IS AVAILABLE ON OUR WEB SITE. TO GET MORE INFORMATION BEFORE YOU VISIT YOUR FORD DEALER, PLEASE VISIT US AT WWW.FORDVEHICLES.COM.

LIKewise, TO GET DETAILS ON VARIOUS FINANCING OPTIONS AVAILABLE ON YOUR NEW FORD VEHICLE, PLEASE VISIT OUR WEB SITE AT WWW.FORDCREDIT.COM.

DOING SO CAN GIVE YOU A HEAD START BEFORE TALKING TO YOUR FORD DEALER ABOUT FINANCING YOUR NEW FORD VEHICLE

