

# WWW.HILLERFORD.COM



**EXPLORER**  
Built for the road ahead.



**HILLER FORD**

HERE IS THE INFORMATION YOU REQUESTED.

## AVAILABLE INCENTIVES ON FORD EXPLORER

Listed below are just a few of the current available Ford vehicle offers and incentives in your area. For details on these and other great offers, contact your Ford dealer directly.

2005 RETAIL OFFERS FOR ZIP CODE: 53132													
OFFER DATES/VALUE	COMBINABLE CASH OFFERS		-OR-	CASH COMBINED WITH APR OFFERS				-OR-	APR ONLY OFFERS				
VALID DATES: OFFER VALUE:	CASH BACK*	FORD CREDIT BONUS CASH**		FORD CREDIT BONUS CASH**	SPECIAL FINANCING RATES					SPECIAL FINANCING RATES ONLY			
					36 mo.	48 mo.	60 mo.	72 mo.		36 mo.	48 mo.	60 mo.	72 mo.
<b>Explorer</b>													
Valid Dates:	04/05-06/30	04/05-05/31	-OR-	04/05-05/31	04/05-06/30				-OR-	04/05-06/30			
Offer Value:	\$4000	\$1000		\$1000	2.9%	3.9%	4.9%			0.0%	0.9%	1.9%	3.9%

2005 LEASE OFFERS FOR ZIP CODE: 53132			
APPLICABLE MODEL	OFFER DATES/VALUE	COMBINABLE CASH OFFERS	
MODEL NAME	VALID DATES: OFFER VALUE:	RCL CASH*†	FORD CREDIT BONUS CASH**
<b>Explorer</b>	Valid Dates: Offer Value:	04/05-06/30 \$4000	04/05-05/31 \$1000

\* Not all buyers will qualify for Ford Credit financing. Please use the chart below to determine the monthly charge per \$1000 financed regardless of down payment. National incentives are effective on retail deliveries from dealer stock through May 31, 2005 but subject to change. A combined customer cash reduced financing rate option is available on most models. Regional programs may vary.

† Not all lessees qualify for Ford Credit RCL. Some payments higher, some lower. Residency restrictions apply. Take new retail delivery from dealer stock by May 31, 2005.

\*\* Take new retail delivery from dealer stock by May 31, 2005. See dealer for complete details.

\*\*\* When financed through Ford Credit. Not all buyers will qualify for Ford Credit financing. Take new retail delivery from dealer stock by May 31, 2005. See dealer for qualifications and complete details. Ford Credit Bonus Cash is compatible with Ford Credit Financing Offer.



## AMERICA'S BEST-SELLING SUV, 13 YEARS AND COUNTING.

What does it take to be ranked best-selling SUV in America — for 13 years and counting? The answer lies in Ford Explorer's innovative combination of interior versatility, luxurious amenities, outstanding capability plus a comprehensive range of safety features. On the inside, Explorer is designed to accommodate whatever you're transporting, offering up to 81.4 cu. ft. of cargo space and seating for up to seven with the available third-row bench seat. When it comes to capability, Explorer maintains its strong leadership stance. The powerful V6 and V8 engines deliver impressive performance, and the available Control Trac® 4WD System lets you take on rugged terrain with confidence. And the class-exclusive\* standard AdvanceTrac® with Roll Stability Control™ (RSC) provides enhanced control in even the trickiest driving conditions. Whichever road you choose, Explorer has you covered.

\*Truck-based midsize SUV class.

Explorer XLT with available XLT Appearance Package





1. Room for everyone. Explorer's available seven-passenger seating configuration includes a 40/20/40 split-folding second-row seat and optional folding third-row seat.
2. Explorer's available Rear Seat DVD Entertainment System features a seven-inch LCD screen, two sets of wireless headphones, a remote control and even a storage space for your favorite selections.
3. Explorer's fully Independent Rear Suspension (IRS) allows each wheel to respond to the road independently, delivering responsive handling and an outstandingly smooth ride.
4. The backbone of the Safety Canopy™ System, patented side curtain airbags\* deploy from the headliner on both sides of the vehicle to cover nearly 2/3 of the glass area along the 1st and 2nd rows of seating.
5. Explorer's available 3rd-row folding seat is the quickest and easiest in its class.\*\*

\*Always wear your safety belt and secure children in the rear seat.  
\*\*Truck-based midsize SUV class.



Explorer Eddie Bauer shown with available crossbars

## CONFIDENCE ON ANY ROAD.

No matter what your destination, Explorer offers all the rugged capability you need to get there. It also provides a comprehensive range of safety features. Take the innovative Personal Safety System™ that helped Explorer land a “Best Pick” rating from the Insurance Institute for Highway Safety. Standard on every Explorer, this system features advanced sensors and dual-stage front airbags\* that help optimize occupant safety.

Explorer also comes equipped with class-exclusive\*\* AdvanceTrac® with Roll Stability Control™ (RSC), a patented electronic stability enhancement system that improves control on sharp turns, uneven terrain or slippery surfaces. Comprising four systems in one, AdvanceTrac® with RSC includes:

- ABS Brakes: Regulate brake pressure to help prevent wheel lockup and skidding when you're stopping the vehicle.
- Traction Control: When the system detects a loss of traction, it quickly responds by reducing engine power when necessary and selectively applying brake force to the slipping wheel while transferring power to the opposite wheel.
- Yaw Control: When understeer or oversteer is detected, the system selectively applies individual brakes and modifies engine power to maximize control.
- Vehicle-Roll Motion Sensor: Class-exclusive RSC helps monitor vehicle-roll motion about 150 times per second. If a potentially unstable situation is detected, the system automatically engages AdvanceTrac® to help keep all four wheels firmly planted on the ground.

\*Always wear your safety belt and secure children in the rear seat.

\*\*Truck-based midsize SUV class.

## FORD EXPLORER MODEL LINEUP

### EXPLORER XLS



#### **A perfect vehicle for the explorer in you.**

- AdvanceTrac® with Roll Stability Control™
- 4-wheel independent suspension and Class II trailer towing hitch
- Rear liftgate with pop-up glass
- AM/FM single CD player with clock, 4 speakers (60 watts)
- Manual air conditioning
- Cargo Management System and cargo area power lock/unlock button

Price: **\$27,490\***

EPA: +

+ 16 city/21 highway\*\*

### EXPLORER XLS SPORT



#### **Add a little sportiness to your XLS.**

- Tire Pressure Monitoring System
- 16" painted cast aluminum wheels
- Black side step bars and wheelip moldings
- Front and rear carpeted floor mats

Price: **\$28,905\***

EPA: +

+ 16 city/21 highway\*\*

### EXPLORER XLT



#### **Our best-selling best seller by a comfortable margin.**

- Fog lamps and security approach lamps
- Dual power sail-mounted foldaway side mirrors
- Overhead storage console includes two map lights, sunglasses holder and garage door opener bin
- 6-way power driver's seat and manual driver lumbar support
- Illuminated visor mirrors
- Outside temperature display and compass

Price: **\$30,295\***

EPA: +

+ 16 city/21 highway\*\*

## EXPLORER XLT SPORT



### Styling with no-compromise capability.

- 17" machined aluminum wheels
- Platinum-painted accents including cladding, bumpers, wheelip moldings and side step bars
- Autolamp automatic on/off headlamps
- Keyless entry keypad
- Auto-dimming electrochromic inside rearview mirror

Price: **\$31,650\***

EPA: +

+ 16 city/21 highway\*\*

## EXPLORER EDDIE BAUER



### The Great Outdoors meets the great indoors.

- 17" Sparkle Silver painted cast aluminum wheels
- Pueblo Gold painted bumpers, lower moldings and wheelip moldings
- Heated sideview mirrors
- Heated two-tone leather-trimmed bucket seats with 8-way power driver's seat with power lumbar, 6-way power passenger's seat with manual lumbar support and two-position driver's seat memory
- Dual-zone electronic automatic temperature control
- Audiophile™ Sound System\* with 6-disc in-dash CD changer
- Color-keyed, leather-wrapped steering wheel with audio/climate controls

Price: **\$34,350\***

EPA: +

+ 16 city/21 highway\*\*

## EXPLORER LIMITED



### Lewis and Clark should have been so fortunate.

- 17" chromed aluminum wheels
- Monochromatic appearance featuring body color moldings and bumpers
- Body color running boards
- Chromed grille and roof rails
- Monochromatic luxury leather-trimmed bucket seats
- Teak woodgrain accents on the center cluster and door trim

Price: **\$35,225\***

EPA: +

+ 16 city/21 highway\*\*

\* Starting Manufacturing Retail Price, excluding taxes, title, and registration fees. Optional equipment not included.

\*\*EPA estimated city/highway mpg based on base engine/transmission configuration.



## FORD EXPLORER VS. CHEVROLET TRAILBLAZER

With its array of great features, it's easy to see why Ford Explorer is the best-selling\* SUV in America. Now see how Explorer stands up to Chevrolet TrailBlazer. For even more comparisons, visit [www.fordvehicles.com](http://www.fordvehicles.com).

<b>Specifications</b>	<b>2005 Ford Explorer 4x4 Limited 4.0L V6</b>	<b>2005 Chevrolet TrailBlazer LT 4WD 4.2L I6</b>
Standard Seating	5	5
Second-Row Bucket Seat	Optional	Not Available
Automatic Climate Control	Standard	Optional
AM/FM Radio	Standard	Standard
CD Player	Standard	Standard
Power Windows	Standard	Standard
Power Door Locks	Standard	Standard
Side Head Curtain Airbags	Optional	Optional
Emergency Fuel Shut-Off Device	Standard	Not Available
Automatic Transmission	Standard	Standard
4-Wheel ABS Brakes	Standard	Standard
Rear Suspension	Independent	Solid Axle**
Fuel Economy City (mpg)	15	15
Fuel Economy Highway (mpg)	20	21
Horsepower@RPM	210@5100	275@6000
Torque@RPM	254@3700	275@3600
Brakes (rear)	Disc	Disc
Wheelbase (in.)	113.8	113
Front Head Room (in.)	39.9	40.2
Front Leg Room (in.)	42.4	46.9
Basic Warranty (months)	36	36
Basic Warranty (miles)	36,000	36,000

\*Based on repurchase numbers among '93-'04 new vehicle buyers.

\*\*Live Hotchkiss solid axle rear suspension with leaf springs and heavy-duty gas shock absorbers.



© Automotive Information Center™ August 2004. All Rights Reserved. This information is supplied for personal use only and may not be used for any commercial purpose whatsoever without the express written consent of Automotive Information Center. Automotive Information Center™ makes no guarantee or warranty, either express or implied, including without limitation any warranty of accuracy, merchantability, or fitness for particular purpose, with respect to the data presented here.





## CONFIGURE YOUR OWN INTERIOR.

Explorer's flexible interior adapts to accommodate whatever you're taking with you - whether it's extra gear or more passengers. With the second- and available third-row seats folded down, seven-passenger models boast an ample 81.4 cu. ft. of cargo space. You can also extend the third-row slider panel to create a continuous load floor.

No time to fuss with tough-to-maneuver seats? Explorer's available third-row folding seat is the quickest and easiest to operate in its class.\* Plus, the rear liftgate makes loading and unloading cargo even more of a breeze. The low liftover height of the flip-up glass lets you add or remove smaller items with incredible ease. Need an out-of-the-way space for tools, emergency supplies or other basic essentials? Stow them in Explorer's convenient under-floor storage compartment.

\*Truck-based midsize SUV class.



# FEATURE EXPLORER SPECIFICATIONS

INTERIOR FEATURES- <b>SEATING</b>	XLS	XLS Sport	XLT	XLT Sport	Eddie Bauer	Limited
Cloth front bucket seats w/2-way adjustable head restraints; rear split/folding 2nd-row seats w/head restraints	S	S	-	-	-	-
Cloth front bucket seats w/2-way adjustable head restraints, 6-way power driver's seat, manual driver lumbar support; 2nd-row 60/40 split/folding seat w/adjustable headrests (2nd-row 40/20/40 split/folding/reclining seat w/adjustable head restraints/3rd-row seat	-	-	S	S	-	-
Seat, 3rd-row cloth (vinyl 3rd-row when ordered w/leather-trimmed seats)	-	-	O	O	O	O
Leather-trimmed low-back sport bucket seats w/8-way power driver seat, two-way adjustable head restraints and power driver and manual passenger lumbar support	-	-	O	O	-	-
Leather-trimmed luxury front bucket seats w/adjustable head restraints, 8-way power driver/passenger heated seats, power driver and manual passenger lumbar support and 2-position driver memory seat; 2nd-row leather-trimmed 60/40 split/folding seats w/head restraints (2nd-row 40/20/40 split/folding/reclining seat w/adjustable head restraints w/3rd-row seat)	-	-	-	-	S	S
Quad Bucket Seating Group includes 2nd-row bucket seats and floor console	-	-	-	-	O	O

INTERIOR FEATURES- <b>CLIMATE CONTROL</b>	XLS	XLS Sport	XLT	XLT Sport	Eddie Bauer	Limited
Air conditioning, manual, CFC-free, rotary controls	S	S	S	S	-	-
Front dual automatic temperature control	-	-	-	-	S	S
Auxiliary climate control	-	-	O	O	O	O

INTERIOR FEATURES- <b>ENTERTAINMENT SYSTEMS</b>	XLS	XLS Sport	XLT	XLT Sport	Eddie Bauer	Limited
Premium AM/FM stereo with single CD (60 watts), black face plate and 4 speakers	S	S	S	S	-	-
Audiophile™ AM/FM audio system w/6-disc in-dash CD and 7 premium speakers; SIRIUS satellite capability (290 watts) (Audiophile™ is a registered trademark of Audiophile™, inc.)	-	-	O	O	S	S
AM/FM stereo/clock/cassette/CD (80 watts) w/4 speakers	-	-	O	O	O	O
Rear seat DVD player (requires moon roof and Safety Canopy TMS system in combination or auxiliary climate control)	-	-	O	O	O	O

INTERIOR FEATURES- <b>COMFORT AND CONVENIENCE</b>	XLS	XLS Sport	XLT	XLT Sport	Eddie Bauer	Limited
Instrumentation—includes 6-gauge cluster for fuel, temperature, voltmeter, oil pressure with warning lights, speedometer, and odometer along with trip odometer and tachometer	S	S	S	S	S	S
Outside temperature display and compass	-	-	S	S	S	S
Driver's message center	S	S	S	S	S	S
Tire Pressure Monitoring System	-	S	S	S	S	S
Speed control	S	S	S	S	S	S
Steering wheel—Black urethane w/tilt column	S	S	-	-	-	-
Steering wheel—Black leather-wrapped w/tilt column	-	-	S	S	-	-
Steering wheel—color-keyed 4-spoke, leather-wrapped, tilt column; includes audio/climate controls	-	-	-	-	S	S
Front speed-sensitive intermittent windshield wipers	S	S	S	S	S	S

Dualintermittentrearwindowwiper/washer/defroster	S	S	S	S	S	S
Day/nightmanualrearviewmirror	S	S	S	-	-	-
Automaticdimmingelectrochromicrearviewmirror	-	-	O	S	S	S
Color-keyedvisors,singleblade,coveredmirror/nonilluminated(bothsides)	S	S	-	-	-	-
Color-keyedvisors,singleblade,coveredmirror/illuminated(bothsides)	-	-	S	S	S	S
Floorconsoleincludesstoragebin,2frontand2rearcupholders,cigarlighter socketw/tetheredcap,frontpowerpoint,coinholder,tissue/mapholderon undersideofarmrestandmoldedmatw/pencilholder	S	-	-	-	-	-
Uniquehighseriesfloorconsoleincludesstoragebin,2frontand2rear cupholders,frontpowerpointandrearpowerpoint(for2ndrow),coinholder, tissue/mapholderonundersideofarmrest,moldedmatw/pencilholder,heatvents andA/Cregisters	-	S	S	S	S	S
Frontoverheadconsoleincludes2map/domelamps,ticketclip,sunglassesholder andgaragedooropenerbin(exceptwhenauxiliaryairconditioningandheateror moonroofisordered)	-	-	S	S	S	S
CargoManagementSystem	S	S	S	S	S	S
Cargoshade,rear	-	-	O	O	O	O
12-voltpowerpoint	S	S	S	S	S	S
Passengerassisthandles–1atpassengerseat,2in2ndrow	S	S	S	S	S	S
Domelight,cargoarea	S	S	S	S	S	S
Dome/maplight,front	S	S	-	-	-	-
Dome/maplight,frontandrear,includes2nd-rowreadinglamp	-	-	S	S	S	S
Color-keyedinstrumentpanelwithfull-widthpad,sidewindowdemisters,air registers	S	S	S	S	S	S
Instrumentpanelaccents–centerclusteraccentinBlack	S	S	-	-	-	-
Instrumentpanelaccents–centerclusteraccentinWarmSteel	-	-	S	S	-	-
Instrumentpanelaccents–centerclusteraccentinMediumPecanCordia (woodgrainappliqué)	-	-	-	-	S	-
Instrumentpanelaccents–centerclusteraccentinMandarinTeak(woodgrain appliqué)	-	-	-	-	-	S
Floormats,frontandrear(color-keyed,carpeted)	-	S	S	S	S	S
Powerwindows/doorlockswithilluminatedcontrols,one-touch-downfordriver windowandaccessorydelayfeature	S	S	S	S	S	S
Dualpoweroutsidemirrors	S	S	S	S	S	S
Cargoarealock/unlockbutton	S	S	S	S	S	S

EXTERIORFEATURES- <b>APPEARANCE</b>	XLS	XLS Sport	XLT	XLT Sport	Eddie Bauer	Limited
Bumpers,frontandrear–Blackmoldedincolor	S	S	-	-	-	-
Bumpers,frontandrear–paintedbodycolor	-	-	S	-	-	S
Bumpers,frontandrear–paintedPlatinum	-	-	-	S	-	-
Bumpers,frontandrear–paintedPuebloGold	-	-	-	-	S	-
Grille–Blackeggcratedesign	S	S	-	-	-	-
Grille–chromeeggcratedesign	-	-	S	S	-	S
Grille–satinnickeleggcratedesign	-	-	-	-	S	-
Mirrors–Black,dualpower,sail-mount,foldawayoutside	S	S	-	-	-	-
Mirrors–Black,dualpower,sail-mount,foldawaywithpuddlelamps	-	-	S	S	-	-

Mirrors—Black,dualpower,heated,sail-mount,foldawayoutsidewithpuddle lamps	-	-	-	-	S	S
Centerhigh-mountedincandescentstoplight	S	S	S	S	S	S
Foglamps	-	-	S	S	S	S
Facetedreflectorquad-beamheadlights	S	S	S	S	S	S
Autolampon/offdelayheadlamps	-	-	-	S	S	S
One-pieceliftgate,hingedattop,withflip-openrearwindow,paddle-typeliftgate handle	S	S	S	S	S	S
Roofrails,Black(nocrossbars)	S	S	S	S	S	S
Roofrails,chrome(nocrossbars)	-	-	-	-	-	S
Crossbars	O	O	O	O	O	O
Blacksidestepbars	-	S	-	-	-	-
Color-keyedrunningboards(PuebloGoldonEddieBauer;bodycoloronLimited)	-	-	-	-	S	S
Blackrunningboards	-	-	O	-	-	-
Stepbar,chrome	-	-	-	-	-	O
Clearcoatpaint	S	S	S	S	S	S
Platinumsidestepbars	-	-	-	S	-	-

EXTERIORFEATURES- <b>PROTECTION</b>	XLS	XLS Sport	XLT	XLT Sport	Eddie Bauer	Limited
Bodysidemolding(narrow)—Blackmoldedincolor	S	S	-	-	-	-
Bodysidemolding(narrow)—bodycolorpainted	-	-	S	-	-	-
Bodysidecladding(lower)—paintedPlatinumaccentcolor	-	-	-	S	-	-
Bodysidecladding(lower)—paintedPuebloGoldaccentcolor	-	-	-	-	S	-
Bodysidecladding(lower)—paintedbodycolor	-	-	-	-	-	S
Color-keyed,plasticscuffplatesonalldoorsandliftgate	S	S	S	S	S	S

EXTERIORFEATURES- <b>WINDOWSANDGLASS</b>	XLS	XLS Sport	XLT	XLT Sport	Eddie Bauer	Limited
Solartintedwindshieldsandfrontdoorwindows	S	S	S	S	S	S
EnhancedappearancePrivacyGlass—reardoor,rearquarterandliftgatewindows	S	S	S	S	S	S
Powermoonroofw/shade	-	-	O	O	O	O

POWERANDHANDLING- <b>POWER</b>	XLS	XLS Sport	XLT	XLT Sport	Eddie Bauer	Limited
4.0LSOHCV6enginewith5-speedautomaticoverdrivetransmission	S	S	S	S	S	S
4.6LSOHCV8enginewith5-speedautomaticO/D	-	-	O	O	O	O
Alternator-130amp	S	S	S	S	S	S
Maintenance-freebattery:72AH(650C.C.A.)withbatterysaverfeature	S	S	S	S	S	S
Fuel tank:22.5-gallon	S	S	S	S	S	S

POWERANDHANDLING- <b>HANDLING</b>	XLS	XLS Sport	XLT	XLT Sport	Eddie Bauer	Limited
AdvanceTrac®withRollStabilityControl™	S	S	S	S	S	S
Powerack-and-pinionsteering	S	S	S	S	S	S
Front/rearstabilizerbars	S	S	S	S	S	S



Heavy-dutygasshockabsorbers	S	S	S	S	S	S
Springs,front,linear-ratecoil-over-shock	S	S	S	S	S	S
Springs,rear,variable-ratecoil-over-shock	S	S	S	S	S	S
Frontaxlemin./max.GAWR(4x2:2,560/2,735lbs.;4x4:2,635/2,800lbs.)	S	S	S	S	S	S
Rearaxlemin./max.GAWR(4x2:3,200lbs.;4x4:3,325lbs.)	S	S	S	S	S	S

POWERANDHANDLING- <b>WHEELSANDTIRES</b>	XLS	XLS Sport	XLT	XLT Sport	Eddie Bauer	Limited
Wheels,16"full-facesteel	S	-	-	-	-	-
Wheels,16"paintedcastaluminum	-	S	S	-	-	-
Wheels,17"machinedaluminum	-	-	-	S	-	-
Wheels,17"sparklesilverpaintedcastaluminum	-	-	-	-	S	-
Wheels,17"chrome	-	-	-	-	-	S
P235/70R16BSWall-seasontires(XLT4x2)	S	-	S	-	-	-
P235/70R16OWLall-seasontires(XLT4x4)	-	S	S	-	-	-
P245/65R17OWLall-terrain tires	-	-	-	S	S	-
P245/65R17BSWall-terrain tires	-	-	-	-	-	S
Underbody-mountedfull-sizesparetire	S	S	S	S	S	S

SAFETYANDSECURITY- <b>SAFETY</b>	XLS	XLS Sport	XLT	XLT Sport	Eddie Bauer	Limited
PersonalSafetySystem™fordriverandfrontpassenger–withdual-stageairbags,safetybeltpretensioners,safetybeltenergymanagementretractors,safetybelt usagesensors,driver'sseatpositionsensor,crashseveritysensorandrestraint controlmodule	S	S	S	S	S	S
Sideintrusiondoorbeams	S	S	S	S	S	S
Adjustable-height1st-and2nd-rowshoulderbelts(2nd-rowoutboardseating positions;seatintegratedshoulderbeltforcenterseatingposition)anddriver's sideBelt-Minder™	S	S	S	S	S	S
SafetyCanopy™System	O	O	O	O	O	O
Childsafetylocksonreardoors	S	S	S	S	S	S
LATCH(loweranchorsandtethers)systemonrearoutboardseatlocations	S	S	S	S	S	S
Brake/shiftinterlock	S	S	S	S	S	S
Brakes–4-wheeldiscwith4-wheelanti-lockbrakingsystem(ABS)	S	S	S	S	S	S
AdvanceTrac®withRollStabilityControl™	S	S	S	S	S	S

SAFETYANDSECURITY- <b>SECURITY</b>	XLS	XLS Sport	XLT	XLT Sport	Eddie Bauer	Limited
SecuriLock™*PassiveAnti-TheftSystem	S	S	S	S	S	S
RemoteKeylessEntrySystem(keyfobs)	S	S	S	S	S	S
Keylessentrywithkeypad	-	-	O	S	S	S
Autolock	S	S	S	S	S	S

S=StandardO=Optional=Unavailable

FordDivisionreservestherighttochangeproductspecificationsatanytimewithoutincurringobligations.

†Alwayswearyoursafetybeltandsecurechildrenintherearseat.

## DEALER ACCESSORIES

Your local Ford Dealer has just the right car for you, plus a host of accessories to tailor it perfectly to your needs.



### Remote Start

No more long waits in a vehicle that's too hot or too cold. Remote start lets you turn on the ignition from up to 500 feet away. You can also use the device to lock and unlock doors and activate the panic button.



### The Ski/Snowboard Carrier

The ski/snowboard carrier comes in two sizes. The smaller version holds up to four pairs of skis or two snowboards, and the large carrier can accommodate up to six pairs of skis or four snowboards.



### The Mobile-Ease Hands-Free Communication System

The Mobile-Ease hands-free communication system lets you place and receive calls without taking a hand off the wheel. Works in tandem with Bluetooth® technology and your Bluetooth-equipped cell phone.

---

## WHY FORD CREDIT?

**At Ford Credit, auto financing is our specialty.** Whether you purchase or opt for a Red Carpet Lease, we offer a range of terms and features that make your experience hassle-free. Contact your local Ford Dealer or visit us on the Web at [www.fordcredit.com](http://www.fordcredit.com).



## ROADSIDE ASSISTANCE

Every new Ford includes the assurance of a 24-hour emergency Roadside Assistance Program provided during the 3-year/36,000-mile limited warranty period. Ask your Ford Dealer for complete details on this program, which includes such services as fuel delivery, tire change, jump start, or even help when you're locked out of your vehicle.

## NEW VEHICLE LIMITED WARRANTY

Under the New Vehicle Limited Warranty, you receive bumper-to-bumper coverage for 3 years/36,000 miles with no deductible. You also receive corrosion perforation coverage for five years with unlimited mileage and no deductible. Ask your Ford Dealer for a copy of the warranty.

# COLOR OPTIONS & WHEEL STYLES



16" Full-Face Steel Wheel  
Standard on XLS



16" Painted Cast Aluminum Wheel  
Standard on XLS Sport and XLT



17" Machined Aluminum Wheel  
Standard on XLT Sport



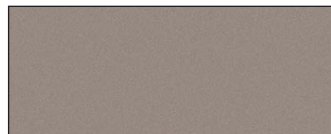
17" Sparkle Silver Aluminum Wheel  
Standard on XLT Appearance Package and Eddie Bauer



17" Chrome Aluminum Wheel  
Standard on Limited



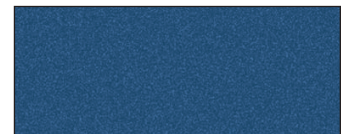
Oxford White



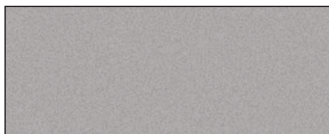
Pueblo Gold Metallic



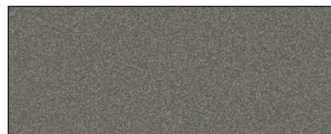
Redfire Metallic



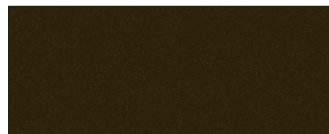
Dark Blue Pearl Metallic



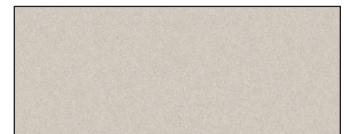
Silver Birch



Mineral Grey



Dark Stone Metallic



Ivory Parchment  
Tri-Coat Metallic



Black



Medium Wedgewood  
Blue Metallic

## HELPFUL FORD LINKS

Now that you've learned more about this Ford vehicle, we would like to recommend the following links that can help you get all the information you need about finding, purchasing and owning the Ford that's just right for you:



**BUILT FOR THE ROAD AHEAD.**

[Fordvehicles.com](#) - The best place to get information about Ford cars, trucks, and SUVs.

[Get a Price Quote](#) - Request a quick price quote from a Ford Dealer in your area.

[Competitive Comparisons](#) - Get a detailed comparison of your favorite Ford vehicle and how it stacks up against the competition.

[Payment Calculator](#) - Find out how much you'll have to spend on your new vehicle with Ford Credit's Payment Estimator.

[Build & Price Your Ford](#) - Build and price your vehicle online - From performance to interior colors and everything in between.

[Search Dealer Inventory](#) - Find your vehicle at a Dealer near you.

[Locate a Dealer](#) - Our dealer locator lets you view your Ford dealer's services, hours, special promotions, and check new and used inventory.

[Incentives & Financing](#) - Keep up to date with current incentives and financing offers in your area.

[Compare Ford SUVs](#) - Visit the SUV Smart Guide© and find the Ford SUV that's right for you.

[Schedule a Test Drive](#) - Sign up online to drive a next generation of Ford vehicle at a dealership near you.

[Certified Pre-Owned](#) - Ford Quality Checked Certified Pre-Owned Dealers - For pre-owned vehicles with Ford confidence!

[Ford Accessories Store](#) - These great accessories can make your Ford vehicle truly unique.

[Ford Credit](#) - Ford Credit online vehicle financing offers the tools you need to aid in your purchase decision including a Payment Estimator and instant credit approval

[My Ford](#) - The Official Website for Ford Vehicle Owners. Personalized maintenance schedules, exclusive offers & incentives, your service expense log and much more!

### Disclaimer

Competitive comparisons based on publicly available information and Ford certification data at time of brochure creation. Some features discussed may be optional. Vehicles shown may contain optional equipment. Features shown may be offered only in combination with other options or subject to additional ordering requirements or limitations. Following creation of the brochure, certain changes in standard equipment, options and the like or product delays, may have occurred which would not be included in these pages. Your Ford Dealer is the best source for up-to-date information. Ford Division reserves the right to change product specifications at any time without incurring obligations.