

2009 DODGE CHARGER POLICE



FLEET OPERATIONS



ANYTHING ELSE IS LIGHT DUTY.



The Dodge Charger Police Vehicle — with the optional 5.7L HEMI® V8 engine — is the most powerful production police vehicle. The Charger is the only police vehicle that offers best-in-class performance⁽¹⁾ in four key pursuit categories:

- Best-in-class available power — 370 hp and 398 lb-ft of torque⁽²⁾
- Best-in-class acceleration — 0 to 100 mph in 15.2 seconds⁽¹⁾
- Best-in-class top speed — 148 mph⁽¹⁾
- Best-in-class vehicle dynamics — average lap time of 01:37.77⁽¹⁾



The best-in-class 5.7L HEMI® V8 engine features a Multi-Displacement System (MDS), which provides better fuel economy by deactivating four of the eight cylinders when less power is needed while cruising. The system functions so smoothly that drivers

won't notice when four of the cylinders are deactivated, but they'll always have the power of the V8 when needed.



A 250-horsepower 3.5L High Output V6 comes standard on Dodge Charger Police Vehicle. It delivers 250 lb-ft of torque and impressive EPA fuel economy estimates: 17 mpg in the city and 24 mpg on the highway.

Both the standard V6 and the optional HEMI V8 have been paired with a five-speed AutoStick® transmission.

The Dodge Charger Police Vehicle also has standard 18-inch heavy-duty steel wheels and P225/60R18 all-season performance tires — the largest offered on a police car.

⁽¹⁾ 2008 Dodge Police Charger — with the optional 5.7L HEMI V8 engine — measured against 2008 Ford Crown Victoria Police Interceptor and Chevrolet Impala Police Vehicle.

⁽²⁾ Preliminary 2009 data.

POLICE-SPECIFIC FEATURES



Aftermarket equipment shown.

The Dodge Charger Police Vehicle was designed from the ground up with the needs of law enforcement agencies in mind. The supporting evidence for this claim is obvious in Charger's many police-specific features:

Greater Stability and Improved Handling

Dodge Charger has the longest wheelbase in its class — 120 inches. It also has a nearly 50/50 front-to-rear weight distribution for improved balance and traction. Its "wheels-to-the-corners" design and wider track provide greater stability and improved handling.

Steering/Suspension

Dodge Charger's performance-tuned steering excels at high speeds. Equally impressive is Charger's heavy-duty, performance-tuned suspension that incorporates rear load leveling and height control to handle bigger cargo loads. The Charger is the only rear-wheel-drive police vehicle with a short/long arm front suspension and an independent five-link rear suspension.

Convenient Shifter

The five-speed automatic transmission shift lever is mounted on the instrument panel to make room for police equipment in the center console area, and to prevent accidental downshifting. When activated, AutoStick®



enables police officers to select optimal gearing while driving. The standard tilt steering column adjusts easily to the driver's comfort.

Police Interior Lighting

Charger has a unique, independently switched red/white LED interior dome lamp. It gives officers a white light to illuminate the interior and a red light for use with night vision equipment. To help with nighttime activities,



the Stealth Mode Switch turns off instrument cluster and radio indicators and dims the PRNDL to the lowest legal level. In addition, the interior courtesy lights activate only via a dimmer switch.

Heavy-Duty Seats

Charger's heavy-duty front bucket seats with manual lumbar are covered in heavyweight cloth. The seats' low side bolsters allow enough space for taller, fully equipped officers to buckle their seat belts easily and comfortably over their utility belts.

Spacious Trunk

When outfitted with the standard compact spare tire, Charger's trunk provides 16.2 cubic feet of cargo capacity. When equipped with a full-size spare tire, the tire mounts above and forward of the compact tire mounting. For an additional 24x36-inch space, a slide-out trunk tray is available through Canfield Equipment.



Aftermarket equipment shown.

OUTSTANDING SAFETY FEATURES

The Dodge Charger Police Vehicle offers these outstanding safety features:

Unibody Steel Construction

The rigid Unibody steel construction provides solid occupant protection. Three distinct front crush zones absorb and direct impact energy away from the passenger compartment.

Air Bags⁽¹⁾

To help protect officers inside the vehicle, advanced multistage driver and front-passenger air bags are standard. Supplemental side-curtain air bags and seat-mounted air bags are available and provide an additional level of protection from side impacts. However, they may not be compatible with the prisoner partition.



Best-In-Class Braking

According to 2007 Michigan State Police vehicle testing, Dodge Charger delivers best-in-class braking power⁽²⁾ from 60 mph to 0 in 142 feet. This is because the Charger is equipped with an impressive standard antilock brake system — with unique ABS calibration — that delivers quicker stopping power. Unique among police vehicles, this brake system includes:

- High-performance front and rear brake pads
- Heavy-duty four-wheel disc brakes with ABS
- 13.6x1.1-inch vented front rotors
- 13.8x1.0-inch vented rear rotors
- Modified rear caliper
- Larger master cylinder

Saddlebag Gas Tank

All Dodge Charger Police Vehicles have a mid-vehicle-mounted saddlebag fuel tank with the spare tire positioned to rotate away from the tank.

Police-Specific ESP

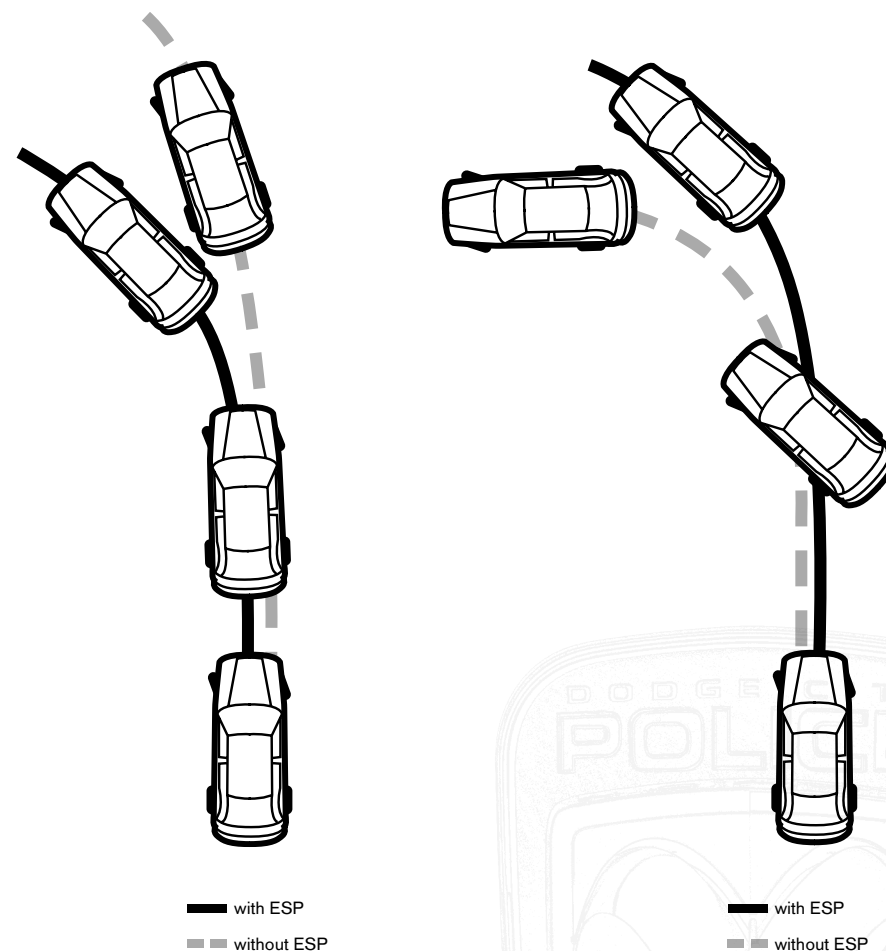
For maximum vehicle control, the Dodge Charger Police Vehicle is equipped with our exclusive Electronic Stability Program (ESP).⁽³⁾ Specially calibrated for police use, ESP electronically detects and automatically assists drivers in critical driving situations, including adverse conditions. ESP works by constantly comparing the driver's intended course with the vehicle's actual course, detecting differences, applying the brakes to individual wheels, and controlling engine power to help keep the vehicle on its intended path.

ESP components include:

- Antilock Brake System (ABS)
- All-speed traction control
- Yaw Sensor
- Steering Angle Sensor

A study conducted by the National Highway Traffic Safety Administration (NHTSA) shows that electronic stability control, our ESP system, reduced single-vehicle crash risk for cars by 35 percent. The Dodge Charger is the only police vehicle to offer this exclusive safety feature.

Charger is also equipped with Brake Assist. This standard feature helps apply maximum braking power in emergency situations.



⁽¹⁾ Always sit properly in the seat with the seat belt fastened.

⁽²⁾ 2008 Dodge Police Charger — with the standard 3.5L V6 engine — measured against 2008 Ford Crown Victoria Police Interceptor and Chevrolet Impala Police Vehicle. 2009 model-year results were not available at time of printing.

⁽³⁾ Always drive carefully, consistent with conditions. Always wear your seat belt.

UNIQUE POLICE EQUIPMENT



Aftermarket equipment shown.



Departmental budgets endure enough strain. With that in mind, the Dodge Charger Police Vehicle was designed specifically to enhance police work and keep upfitting costs down. Charger is the only police vehicle to provide the following equipment from the OEM:

Police Equipment Mounting Bracket

This unique bracket is installed in the center console area between the front and rear seats. It provides a single-surface mount for easy installation of a radio, computer system, video controls and other police equipment.

Police Equipment Interface Module

Another unique feature is Charger's Police Equipment Interface Module. This police vehicle first gives upfitters a single interface connection for most aftermarket electrical police equipment. It's located under the instrument panel center stack area.

Easy Path Wiring Grommet

Charger is equipped with a unique Easy Path Wiring Grommet in the engine bulkhead. It makes wiring easier for upfitters. The flexible cone can be adjusted to the amount of wiring passing through, thus providing a tight seal to prevent moisture from entering the cabin.

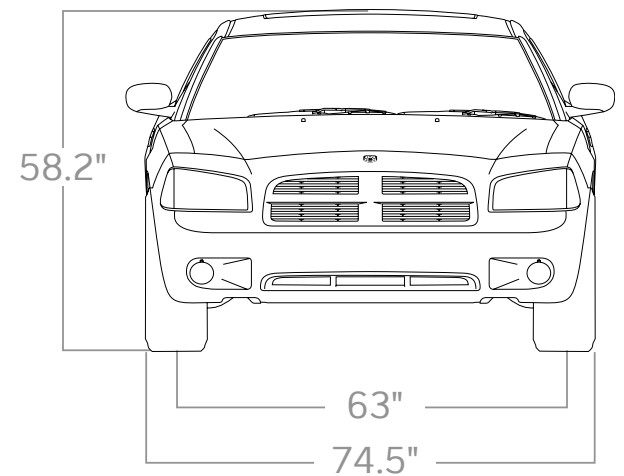
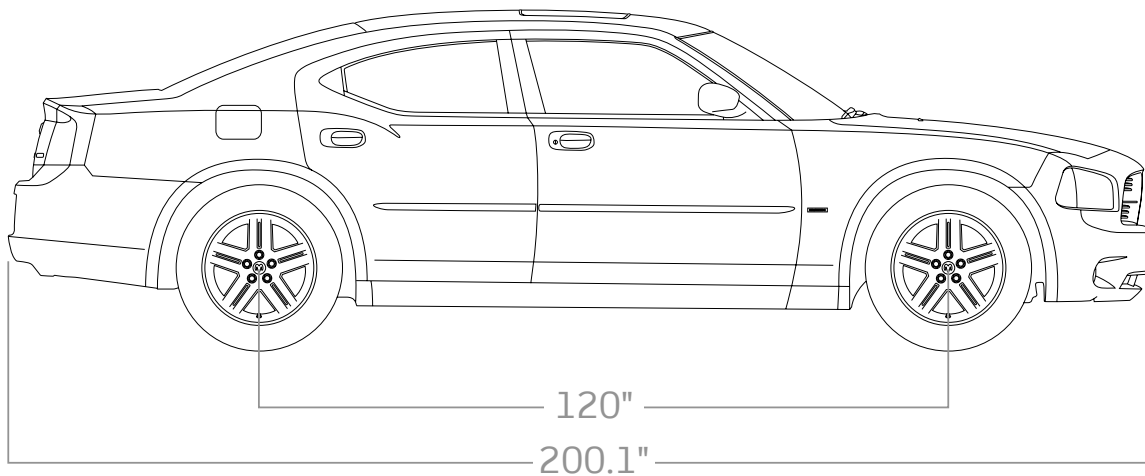


Wigwags

The standard integrated headlamp and taillamp flashers, or wigwags, represent another police vehicle first. This single connection — provided direct from Chrysler — helps reduce the amount of time an upfitter would spend installing the wigwags. The wigwags must be activated by the upfitter.

120-Amp Power Connection

In the same location is a standard, auxiliary 120-amp power connection that consists of three 20-amp fused battery feeds and three 20-amp fused ignition feeds.



STANDARD ISSUE



Optional vinyl seat and vinyl floor shown.



Dodge Charger Police Vehicle is loaded with the following standard equipment:

Standard Police Equipment

- 3.5-liter High Output V6 engine with 250 hp and 250 lb-ft of torque
- 160-amp high-output alternator
- 160-mph or 260-km/h (certified) calibrated speedometer
- 18x7.5-inch steel wheels
- 800 CCA battery
- AM/FM radio with CD player, changer controls, four speakers, and clock with auxiliary audio input jack
- Bright hubcaps
- Easy Path Wiring Grommet between underhood and passenger compartments
- External oil coolers: engine oil, transmission fluid, power steering fluid
- Four-wheel disc heavy-duty antilock brakes with all-speed traction control
- Four-wheel independent performance suspension
- Heavy-duty cloth front bucket seats with manual lumbar and a cloth rear bench seat
- Column-mounted shift lever
- Load-leveling, height-control shock absorbers
- P225/60R18 BSW V-rated performance tires
- Police performance Electronic Stability Program (ESP)⁽¹⁾ with Brake Assist and all-speed traction control
- Police performance-tuned steering
- Trunk-lid key lock cylinder
- Separate key and key fob
- Severe-duty cooling system
- Independently switched red/white LED dome lamp

Standard Police Electrical Equipment

- Center instrument panel stack power connector with three 20-amp-fused battery feeds and three 20-amp-fused ignition feeds
- Dome lamp door switch deactivated
- Dual Spot Lamp Prep Package
- Integrated engine hour and engine idle meter
- Police equipment interface module
- Separate fuses for left and right battery-fed spot lamps
- Software-controlled alternating headlamps and taillamps (wigwag)
- Stealth mode switch (turns off instrument cluster and radio indicators; PRNDL dims to lowest legal limit)
- Three pairs of twisted 18-gauge wiring for sirens, speakers or controls provided from interior to front bumper
- Underhood lamp

Standard Safety and Security Equipment

- Electronic Stability Program (ESP)⁽¹⁾ with Brake Assist and all-speed traction control
- Four-wheel heavy-duty antilock brakes
- Advanced multistage driver and front-passenger air bags⁽²⁾
- Energy-absorbing steering wheel and column
- Mid-vehicle-mounted saddlebag fuel tank
- Police performance-tuned suspension
- Unibody construction with three distinct crumple zones
- Tire Pressure Monitoring Warning Lamp and “Low Tire” message

DIMENSIONS ⁽³⁾ /SPECIFICATIONS	
Wheelbase	120.0
Overall Length	200.1
Overall Height	58.2
Overall Width	74.5
Front Track	63.0
Rear Track	63.1
Turning Diameter (ft)	38.9
Head Room (Front/Rear)	38.7/36.2
Leg Room (Front/Rear)	41.8/40.2
Shoulder Room (Front/Rear)	59.3/57.6
Hip Room (Front/Rear)	56.2/55.5
SAE Volume (cu ft)	104.0
EPA Volume Index (cu ft)	120.2
Seating Capacity	5
Trunk Capacity (cu ft)	16.2
Curb Weight (lb, estimated)	3,946 (3.5L)/ 4,112 (5.7L)
Fuel Tank Capacity (U.S. gal)	19
Axle Ratios	2.87 (3.5L)/ 2.65 (5.7L)

⁽¹⁾ Always drive carefully, consistent with conditions. Always wear your seat belt.

⁽²⁾ Always sit properly in the seat with the seat belt fastened.

⁽³⁾ Inches unless otherwise specified.

AUTHORIZED OPTIONS

The Dodge Charger Police Vehicle is ready to protect and serve. But if you have special law enforcement needs, Dodge Charger can be equipped to match your precise requirements.

Here is a list of its available authorized options:

- 5.7-liter HEMI® V8 with (MDS) and 370 hp and 398 lb-ft of torque⁽¹⁾
- Police Equipment Mounting Bracket — no charge option
- 18-inch bolt-on wheel covers
- Daytime Running Lamps
- Power foldaway heated mirrors
- Security alarm system — no charge option
- 148-mph top speed limiter for the 5.7L HEMI V8
- Easy-clean black vinyl floor covering
- Emergency rear door lock override
- Engine block heater
- Entire fleet keyed alike
- Fixed vinyl rear bench seat
- Bodyside moldings
- Full-size spare, battery cover and cargo compartment floor mat
- Power eight-way driver's seat

- Rear inside door locks and handles deactivated
- Rear windows inoperative from rear seat
- Supplemental front and rear passenger side-curtain air bags⁽²⁾
- Supplemental driver and front passenger seat mounted air bags⁽²⁾
- Spot lamp, driver's side or dual

Undercover Operations

The Dodge Charger Police Vehicle is also ready for special service duty. And for undercover operations, Dodge Charger is available with the Street Appearance Group (shown on the opposite page), which includes:

- 18-inch aluminum wheels
- Bright grille
- Fog lamps
- Body-colored power, heated, foldaway mirrors
- SXT badging

⁽¹⁾ Preliminary 2009 data.

⁽²⁾ Always sit properly in the seat with the seat belt fastened.



PAINT OPTIONS

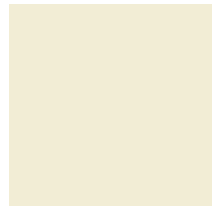
Standard Exterior Colors



Bright Silver Metallic



Brilliant Black Crystal Pearl



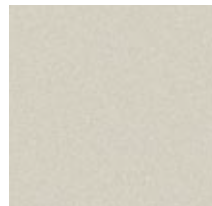
Cool Vanilla



Dark Titanium Metallic



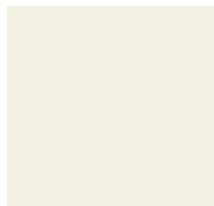
Inferno Red Crystal Pearl



Light Sandstone Metallic



Deep Water Blue Pearl

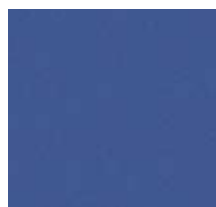


Stone White



TorRed

Special Production Paint Colors



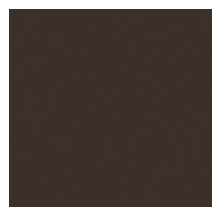
Electric Blue, PY8002



Midnight Blue, PY8001



MS Blue, PY8999

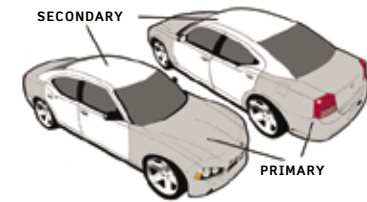
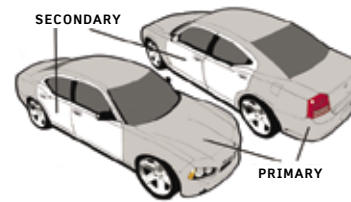
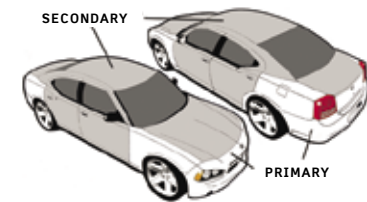
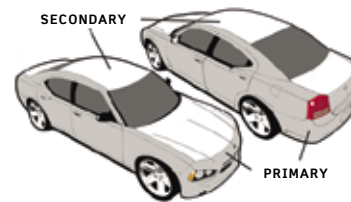
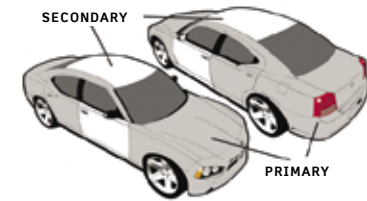
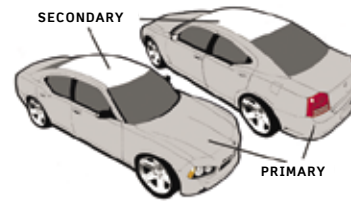


Medium Brown, PY6675



Sheriff's Tan, PY6676

Black and White Paint Options



These two-tone paint combinations are available through an aftermarket supplier only.

These special paint colors require a minimum vehicle order and are available at an added cost.

AUTHORIZED SALES, SERVICE AND TECHNICAL SUPPORT

GSA/GOVERNMENT SALES — NATIONAL

Roxie P. Thomas
Senior Manager
(202) 414-6720
rap17@chrysler.com

GOVERNMENT AND ALTERNATIVE-FUEL VEHICLE SALES — REGIONAL

DENVER
Michelle Downing
(303) 793-8329
mld6@chrysler.com

NORTHEAST
Joe Branda
(845) 578-2180
jgb@chrysler.com

SOUTHWEST
Peter Kash
(469) 374-4049
pak12@chrysler.com

SOUTHEAST
James McCoy
(407) 826-7229
jem17@chrysler.com

WEST
Roger Boyle
(949) 450-5169
rmb2@chrysler.com

INSIDE SALES
Gena Edwards
(248) 761-4836
gae2@chrysler.com

NATIONAL FLEET SERVICE TEAM

**DENVER B.C. —
WEST AND NORTHWEST**
Bob McGeachy
Regional Service Manager
(805) 276-1692
rsm20@chrysler.com

MIDWEST/NORTH
Ben Hammond
Regional Service Manager
(248) 512-7940
ebh2@chrysler.com

SOUTHEAST
George Bomanski
Regional Service Manager
(407) 826-7010
gmbs@chrysler.com

GREAT LAKES
Jeremy Brown
(248) 838-4302
jnb3@chrysler.com

MID-ATLANTIC
Lorraine
Regional Service Manager
(410) 567-1889
lei@chrysler.com

NORTHEAST
Chris Dunham
Regional Service Manager
(845) 642-8105
crd32@chrysler.com

SOUTHWEST
Ron Szczepankowski
Regional Service Manager
(248) 512-7920
rls15@chrysler.com

**WEST B.C. — L.A.
AND NORTHWEST**
Eric Gierst
Regional Service Manager
(661) 270-1621
evg3@chrysler.com

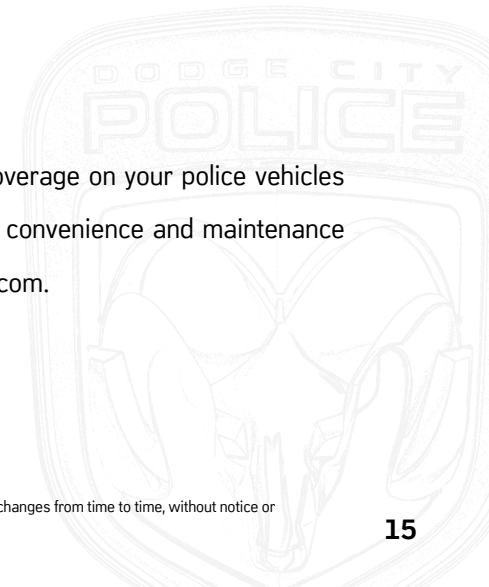
Chrysler Service Contracts

Chrysler Service Contracts offer exceptional mechanical coverage beyond your police vehicle's three-year/36,000-mile warranty period. Plans are available in a variety of time and mileage combinations — from four years/60,000 miles to seven years/100,000 miles.

To learn how you can purchase mechanical coverage on your police vehicles beyond the manufacturer's warranty or obtain convenience and maintenance coverage, visit www.servicecontracts.chrysler.com.

NOTE: The Dodge Police Chargers shown in this brochure feature optional aftermarket upfit accessories.

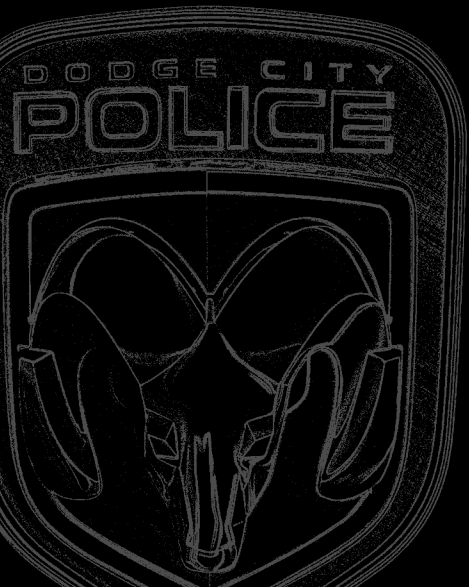
All product specifications are based on authorized information as of May 16, 2008. Although all descriptions are believed correct at time of publication, accuracy cannot be guaranteed. Chrysler LLC reserves the right to make changes from time to time, without notice or obligation, and options are subject to specific requirements, restrictions and availability. Dodge and HEMI are registered trademarks of Chrysler LLC. Fleet Operations is a division of Chrysler Motors LLC.





CHRYSLER

FLEET OPERATIONS



To learn more about the Dodge Charger Police Vehicle, including how to obtain an Upfitter's Guide, please visit www.fleet.chrysler.com or call **1-800-999-FLEET**.