

2013
HYUNDAI

FULL LINE



WHO SAYS THERE'S NO LOYALTY ANYMORE?

LASTING IMPRESSIONS

According to recent *Kelley Blue Book*® Market Intelligence data, brand loyalty for Hyundai surpassed Honda and Toyota at the end of 2011 on kbb.com, raising Hyundai's brand loyalty to the Number 1 spot in the industry.¹ That's pretty remarkable, given all the competition today among the world's automakers. It's made everybody's cars better, ours included. As *Motor Trend* observed, "Somewhat under the radar, Hyundai has steadily improved the quality of its growing lineup, building cars that are as reliable and often rewarding as they are affordable."²

DISTINCTIVE DESIGNS

Look at the 2013 Hyundai line-up, and the first thing you're likely to notice is the attention we've paid to design. Inside and out, there's a character that comes through. A character that somehow manages to balance sophistication with simplicity. On the road, it reveals itself in the kind of performance that combines powerful response with remarkable fuel efficiency.

NEW POSSIBILITIES

We've also made huge investments into making our vehicles among the safest on the road. In 2012, the Insurance Institute for Highway Safety awarded six Hyundai models Top Safety Pick honors.⁵ Then, there's our warranty – America's Best. It gives our owners a high level of confidence in Hyundai quality. We're pleased that our approach to automotive innovation is earning industry accolades and loyal customers. But what matters most to us is your opinion. So visit an authorized Hyundai dealer today. Test drive a 2013 Hyundai. And experience what happens when new thinking opens up new possibilities.



EQUUS

RETHINK EVERYTHING
YOU KNOW ABOUT
LUXURY CARS.

For decades, everyone knew – or thought they knew – the pecking order of the world's premier luxury sedans. Then along comes a car company filled with ideas: New ideas about the level of comfort, safety, technology and performance a luxury sedan should offer its owner. New ideas of where a luxury sedan can come from. New ideas of what a luxury sedan should cost. And suddenly, people have begun to realize: The past is not the future.

The editors of *AUTOMOBILE Magazine* exclaimed “This grandly proportioned sedan mimics the dimensions and the features of established high-zoot rides like the Lexus LS, the Audi A8, the Mercedes-Benz S-class, and the BMW 7-series. And it does so for thousands less.”⁶

Looks like tradition has been thrown out the acoustic-laminated window.



EQUUS ULTIMATE in Black Noir Pearl



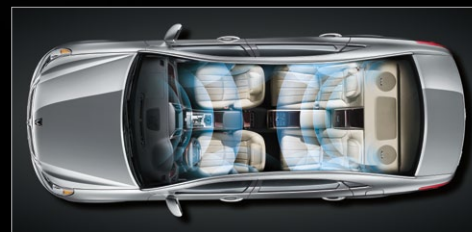
FIRST-CLASS SEAT

With its first-class right rear seat, Equus Ultimate affords a level of comfort inspired by the first-class cabins of luxury airliners. The seatback massages and vibrates with heat – the perfect relaxation therapy for extended cruising.



429 HORSES UNDERFOOT

Equus gets its power from a 5.0L DOHC V8 that has garnered plenty of critical acclaim. It's all there: An all-aluminum design that's lightweight, yet durable. 429 HP thanks to advanced direct fuel injection technology. And an EPA-estimated 23 MPG highway rating with premium fuel.⁸



LEXICON® 7.1 SURROUND SOUND AUDIO

Audiophiles have ruled in favor of our state-of-the-art Lexicon 7.1 Discrete Surround Sound premium audio system. With 17 speakers placed strategically throughout the cabin, you'll hear the full harmonic spectrum – from deep, rich bass to clear mid-tones and crisp high-frequency sounds.⁹



EQUUS ULTIMATE in Cashmere Beige Leather

HIGHLIGHTS & AVAILABLE FEATURES

- A. 429-HP, 5.0L Tau® DOHC Gasoline Direct Injection V8 engine
- B. 8-speed automatic transmission with SHIFTRONIC®
- C. 12-way power-adjustable heated/cooled driver seat with soothing massage feature
- D. Advanced navigation and Driver Information System with 8" LCD display
- E. 608-Watt Lexicon® 7.1 Discrete® Surround Sound audio system
- F. First-class right rear reclining seat with air cell massage and power-adjustable leg support
- G. Rear command console with thermoelectric refrigerated storage compartment

GENESIS

SEE THAT GRILLE? IT'S THE CHANGING FACE OF LUXURY.

Luxury performance sedans are judged on straightforward criteria: Design, performance and technology. So how does Hyundai Genesis compare to its more established (and more expensive) competition? We invite you to discover for yourself, by taking a test-drive in the V6-powered Genesis or V8-powered Genesis R-Spec. In the meantime, consider some of the conclusions reached by the automotive press after driving our 2012 models.

From *Edmunds.com*: "The Hyundai Genesis is aptly named...it has created a category in which performance, power, luxury and comfort exist in balance with incredible value. Simply put, no other car offers so much for so little."¹⁰ *Kelley Blue Book*[®] had this to say: "Complementing its premium character with a megadose of pure performance, the Genesis 5.0 R-Spec served notice that...the automaker is ready to seriously raise the stakes in the sport-luxury sedan game."¹¹



GENESIS 5.0 R-SPEC in Black Noir Pearl



V6 OR V8 POWER

Our class-leading 333-HP, 3.8-liter V6 engine uses Gasoline Direct Injection to achieve a 15% boost in horsepower with no increase in displacement. Also available: An award-winning 429-HP, 5.0L DOHC V8 engine that combines high power output with direct fuel injection to deliver EPA-rated 25 MPG highway fuel efficiency.⁸



8 OPTIMIZED SPEEDS

Genesis transfers power to the pavement through a new 8-speed SHIFTRONIC[®] transmission that seamlessly selects the right gear to optimize torque and efficiency. And SHIFTRONIC gives you the choice of letting the car automatically shift, or taking a more hands-on approach with manual clutchless shifting.



SMARTER SHOCKS

Electronically-controlled Sachs[®] Amplitude Selective Damping shock absorbers help ensure the Genesis ride is smooth, even when the road surface isn't. The end result is a sedan equally adept at inspiring the Genesis driver and soothing its passengers.



GENESIS 5.0 R-SPEC in Jet Black Premium Leather

HIGHLIGHTS & AVAILABLE FEATURES

- A. 429-HP, 5.0L Gasoline Direct Injection (GDI) V8 or 333-HP, 3.8L GDI V6 engine
- B. 8-speed automatic transmission with SHIFTRONIC[®]
- C. Sport-tuned independent multi-link suspension (R-Spec)
- D. Heated leather seating surfaces with driver-side cooling
- E. 528-Watt Lexicon[®] 7.1 Discrete[®] Surround Sound premium audio system with 17 speakers
- F. DVD navigation system with multimedia controller and Driver Information System
- G. Adaptive Front Lighting System with HID Xenon headlights and dynamic auto-leveling

GENESIS COUPE



WE'RE ENTHUSIASTS, TOO.

When we engineered the Genesis Coupe, our aim was the enthusiasts' aim: More power, with more technological precision. In Genesis Coupe 2.0T, a new twin-scroll turbocharger and larger intercooler help boost output to 274 horsepower and 275 lb-ft of torque.

Now, Genesis Coupe 3.8 adds Gasoline Direct Injection to up the output of its 3.8-liter V6 to a whopping 348 horsepower and 295 lb-ft of torque with premium fuel. It's class-leading performance matched by, well, class. Slide into the driver's seat, and you'll sense that Genesis Coupe is a premium sports coupe with a level of refinement and technology rivaling that of more expensive competitors.



GENESIS COUPE 3.8 TRACK in Tsukuba Red



GASOLINE DIRECT INJECTION

Genesis Coupe 3.8 now adds Gasoline Direct Injection. It's a smarter, more efficient way to ensure that every drop of fuel creates powerful combustion. To handle the added power, Hyundai engineers developed a new 8-speed automatic transmission with paddle-shift SHIFTRONIC® – the first 8-speed in its class.



Professional driver on a closed course. Do not attempt.

RACING-INSPIRED SPECIFICATIONS

R-Spec models feature higher performance Brembo® brakes, a Torsen® limited-slip differential for better control and acceleration out of tight corners, and staggered fitment performance tires on 19-inch gunmetal-finish alloy wheels. Inside, R-Spec adds sport seats with red leather bolsters and inserts.¹³



ALL-ACCESS PASS

Genesis Coupe lets you get your tunes several ways: Plug your iPod® or other compatible MP3 player into the standard USB port. Dial into your favorite channels on SiriusXM® Satellite Radio. Groove to the high-fidelity sounds of HD Radio®, or stream audio from your compatible smartphone via Bluetooth.^{®14}



GENESIS COUPE 3.8 GRAND TOURING in Tan Leather

HIGHLIGHTS & AVAILABLE FEATURES

- A. Choice of 274-HP, 2.0L twin-scroll turbocharged 4-cylinder or 348-HP, 3.8L Gasoline Direct Injection V6 engine
- B. Choice of close-ratio 6-speed manual or 8-speed paddle-shift SHIFTRONIC® automatic transmission
- C. Sport-tuned suspension with front strut brace
- D. Advanced navigation system with 7" touchscreen and NavTraffic^{®14}
- E. Hyundai Blue Link[®] telematics system
- F. 360-Watt Infinity[®] premium audio system with 10 speakers¹⁵
- G. R-Spec & Track series models with Torsen[®] limited-slip differential, track-tuned suspension, 19" alloy wheels and Brembo[®] brakes

AZERA

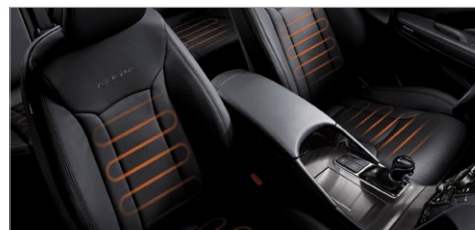
HYUNDAI AZERA.
PROOF THAT BIGGER
IS SOMETIMES BETTER.

With the most interior volume, the most front-seat legroom, and the most front headroom in its class, Azera certainly meets the large car criteria. But Azera isn't just spacious. It's also powerful, refined and loaded with standard features – including some that other car companies tend to offer only as options. Azera's dynamic interpretation of the Hyundai "fluidic sculpture" design language lends it a sleek appearance that's energetic, yet elegant.

Azera's powerful, efficient 3.3L Gasoline Direct Injection V6 engine serves as an open invitation to press the engine's start button and run through six perfectly spaced shift points. Sophisticated steering and suspension enhancements deliver a smooth ride with exceptional handling and cornering. Giving you the power to rule. And the systems to reign.



AZERA TECHNOLOGY PACKAGE in Black Onyx Pearl



CUSTOMIZED COMFORT

Azera welcomes passengers into luxury's lap with heated front and rear leather seating surfaces. Ventilated front seats are optional, along with a memory system that recalls individual preferences for seat, steering wheel and side mirror locations.



HANDS-FREE PHONE

Syncing your Bluetooth® smartphone with Azera's audio system is a cinch, allowing you to send and receive phone calls at the touch of a button. The system also recognizes your voice commands for true hands-free calling.



AUDIO DELIGHTS

A 450-Watt Dimension audio system comes standard in every Azera. Enjoy crisp, clear fidelity while listening to your favorite CDs, SiriusXM® Satellite Radio or HD Radio® programming. Prefer your own playlists? iPod®/USB and auxiliary input jacks are also standard.



AZERA TECHNOLOGY PACKAGE in Chestnut Brown Leather

HIGHLIGHTS & AVAILABLE FEATURES

- A. 293-HP, 3.3L Gasoline Direct Injection DOHC engine
- B. EPA estimated 29 MPG highway fuel efficiency*
- C. 6-speed automatic transmission with SHIFTRONIC®
- D. Heated front and rear leather seating surfaces
- E. Ventilated front seats
- F. Panoramic sunroof
- G. Proximity key entry with push-button start
- H. 550-Watt Infinity® Logic7® AM/FM/SiriusXM®/CD/MP3 audio system with external amplifier and subwoofer
- I. Advanced navigation system with 7" high-resolution touchscreen

SONATA

THE POWER OF
SUGGESTION, RAISED
TO AN ART FORM.



When we built the Sonata, we gave it all the things people told us they wanted in a mid-size sedan. More style. More room. 5-Star Safety Ratings. A request for more power and more efficiency? No problem. Sonata uses a Gasoline Direct Injection four-cylinder engine to generate the most standard horsepower in its class, with an EPA-estimated highway rating of 35 MPG.⁸ A turbocharged version was also conceived for drivers seeking V6 power and 4-cylinder fuel efficiency.

Sonata's free-flowing curves, inspired by wind and the fluid energy found in nature, exemplify Hyundai's new thinking in design. And our advanced Perfect Paint process ensures your Sonata will always look sharp. Inside, Sonata's "class-above" interior offers a generous list of comfort and convenience features. Features like a Bluetooth® hands-free phone system, advanced navigation with voice recognition, and more.



SONATA 2.0T LIMITED in Sparkling Ruby



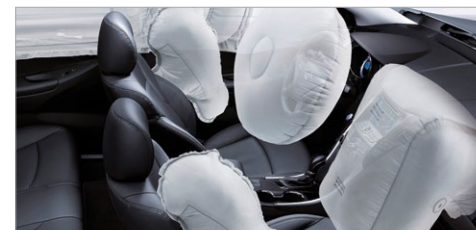
LIVE LARGE

Sonata has so much room inside, the EPA classifies it as a large sedan.¹⁶ All of that space is wrapped on the outside with a design motif we call fluidic sculpture.



WHAT EXPERTS ARE SAYING

When Sonata first arrived, *AUTOMOBILE Magazine* exclaimed, "The Sonata emerges as an unquestioned leader in a segment that's bursting with excellent automobiles." *Car and Driver* summed up Sonata by saying, "...its greatness is undeniable."¹⁷



TOP SAFETY PICK

The Insurance Institute for Highway Safety named Sonata a 2012 IIHS Top Safety Pick. And the U.S. NHTSA (that's short for National Highway Traffic Safety Administration) gave Sonata its highest possible overall safety rating: 5-Star.¹⁸



SONATA 2.0T LIMITED in Camel Leather

HIGHLIGHTS & AVAILABLE FEATURES

- A. Choice of 198 or 200-HP, 2.4L Gasoline Direct Injection (GDI) or 274-HP, 2.0L turbocharged GDI 4-cylinder engine
- B. 6-speed automatic transmission with SHIFTRONIC®
- C. Classified by EPA as Large Car interior volume
- D. Leather seating with heated front and rear seats
- E. 400-Watt AM/FM/SiriusXM®/CD Infinity® premium audio system with 9 speakers
- F. HD Radio® multicasting
- G. 7" Touchscreen navigation system with Hyundai Blue Link® telematics
- H. Power tilt-and-slide panoramic sunroof

SONATA HYBRID

SONATA. HYBRID.
NOW THAT'S A
POWERFUL COMBINATION.

Sonata Hybrid combines impressive power with exceptional fuel economy. The key is the car's weight: Thanks to its innovative lithium polymer battery, Sonata is significantly lighter than its key competitors. Yet its lightweight battery packs heavyweight punch. It maintains power for longer periods of time than conventional hybrid batteries, and feeds an electric motor that's paired with an optimized Atkinson Cycle 4-cylinder engine. The result? A hybrid sedan that raised eyebrows two years ago when it charged onto the market with a class-leading 206 combined horsepower, operating up to 74 MPH on battery power alone.

How confident can you be in our lithium polymer battery technology? It comes with a lifetime warranty – an industry first.* It also fits in the trunk, giving Sonata Hybrid the largest passenger volume among midsize hybrid sedans. A regenerative braking system even recharges the car's batteries on the road. For more information on the new thinking behind Sonata Hybrid, visit your nearest Hyundai dealer or find us online at hyundaiusa.com.



SONATA HYBRID LIMITED in Blue Sky Metallic



IN A CLASS BY ITSELF

Want space-age technology, and a lot more space? Sonata Hybrid offers the most interior space in the Hybrid Midsize Sedan class, coupled with Blue Link® features that turn your cockpit into a mobile command center.



LIFETIME LIMITED BATTERY WARRANTY

How confident can you be in our lithium polymer battery technology? It's the first in the industry to offer a lifetime limited warranty. It also fits in the trunk, giving Sonata Hybrid the largest passenger volume among 2012 midsize hybrid sedans..



YOU TALK. IT LISTENS.

With voice-activation of its available navigation system, tell Sonata Hybrid what you're looking for, and it will map out the route while responding with turn-by-turn assistance.



SONATA HYBRID LIMITED in Camel Leather

HIGHLIGHTS & AVAILABLE FEATURES

- A. Advanced Atkinson Cycle 4-cylinder engine / electric hybrid powertrain with lithium polymer battery system
- B. 6-speed automatic transmission with SHIFTRONIC®
- C. The most interior room among mid-size hybrid sedans
- D. 400-Watt Infinity® premium audio system with 9 speakers
- E. Power tilt-and-slide panoramic sunroof
- F. Hyundai Blue Link® telematics system
- G. Eco-spoke alloy wheels
- H. Lithium polymer battery lifetime warranty

*Warranty is non-transferable and not valid on vehicles exported to Korea.

VELOSTER

VELOSTER? OR THE NEW VELOSTER TURBO? SOMETIMES, YOU HAVE TO MAKE TOUGH CHOICES IN LIFE.



Last year, the launch of Hyundai Veloster created quite a stir. With its innovative 3-door coupe configuration and bold, concept-car design cues, Veloster was, in the words of *Edmunds.com* "...unlike anything on the road right now, with the sort of courageous styling that says, 'we can still take a chance.'"¹⁹

Wait until they see what's next. For 2013, Hyundai introduces the new Veloster Turbo. Its 201-HP performance is a whopping 46% increase in power, eclipsing the Volkswagen GTI even with less displacement. And the 6-speed manual transmission still achieves an EPA-estimated 35 MPG on the highway – only a shade off our non-turbocharged model's 37 MPG EPA-estimated highway rating.⁸ Of course, Veloster saves some of its engaging performance for what goes on inside the spacious passenger cabin. Start the car at the push of a button, you'll discover first-hand that not all of the Veloster's fun is triggered by the gas pedal.



VELOSTER TECH PACKAGE in Vitamin C



ADRENALINE BOOST

The intercooled twin-scroll turbine of Veloster Turbo's 201-horsepower, DOHC 4-cylinder engine helps boost performance by raising low-end torque. Translation: Press the gas, and you'll be pressed back into your seat.



A FIRST FOR HYUNDAI: MATTE FINISH PAINT.

Veloster Turbo is available in a special new color – Matte Gray, the first matte paint finish from Hyundai.²¹ And whether you choose to shine or not, you can tell Veloster Turbo by its styling cues, including projector headlights with LED accents, standard 18-inch alloy wheels, rear spoiler and LED taillights.



MOBILE MEDIA ROOM

You can't get a larger screen in this class than the 7-inch multimedia LCD touchscreen that comes standard on every Hyundai Veloster. There's also an available 115V outlet for power and connections for video that let you watch movies and play Xbox 360[®] in the comfort of your parked car.²⁰



VELOSTER TURBO ULTIMATE PACKAGE in Black Leather

HIGHLIGHTS & AVAILABLE FEATURES

- A. 138-HP, 1.6L Gasoline Direct Injection (GDI) or 201-HP, 1.6L twin-scroll turbocharged GDI 4-cylinder engine
- B. Choice of 6-speed manual or optional 6-speed EcoShift Dual Clutch Transmission on Veloster, or optional 6-speed automatic transmission on Veloster Turbo
- C. Sleek 3-door coupe design with hatchback offering 15.5 cubic feet of cargo capacity
- D. Navigation system with rearview camera and backup warning sensors
- E. Gracenote[®] and Pandora[®] Internet Radio functionality
- F. Power tilt-and-slide panoramic sunroof
- G. 18-inch alloy wheels with painted inserts

ELANTRA SEDAN / COUPE / GT

IT'S NOT JUST A NEW LINEUP
OF CARS. IT'S A NEW LINE
OF THINKING.

Last year, carmakers introduced dozens of new models in North America. And out of all those bright, shiny new cars, a panel of automotive journalists agreed that Hyundai Elantra stood above the rest, naming it 2012 North American Car of the Year.

Fast forward a year, and you won't find Elantra resting on its laurels. It's very much on the move, with a new fun-to-drive Elantra Coupe joining the family. Also new for 2013: Elantra GT, Hyundai's stylish interpretation of the five-door hatchback. And there's good news on fuel economy: The 2013 Elantra Sedan has an estimated EPA rating of 38 MPG highway.⁸ Together with class-above interior space and America's Best Warranty, it's easy to see why the editors at *MotorTrend.com* exclaimed, "Without a doubt, the Hyundai Elantra is one of the best compact sedans you can buy today."²²



ELANTRA COUPE SE in Shimmering Air Silver / ELANTRA SEDAN LIMITED in Radiant Silver / ELANTRA GT TECH PACKAGE in Shimmering Air Silver



HEATED REAR SEATS

Elantra is the first in its class to offer heated rear seats. Gives you the warm fuzzies just thinking about it. Most trim levels also feature heated front seats. There's even an available power driver seat with lumbar support and available leather seating surfaces.



MOVE UP TO MORE

Elantra Sedan is so roomy, the EPA deems it a midsize, while Civic and Corolla are still categorized as compact cars. With its class-above interior volume of 110.4 cubic feet, Hyundai Elantra has more room (passenger and cargo) than Volkswagen CC, Nissan Maxima and Acura TSX.



BELLS AND WHISTLES

Elantra Coupe is available with three features that aren't offered on Honda Civic Coupe, period: A rearview camera, proximity key entry and a power driver's seat.



SEDAN LIMITED TECHNOLOGY PACKAGE in Gray Leather

HIGHLIGHTS & AVAILABLE FEATURES

- A. 148-HP, 1.8L DOHC 4-cylinder engine with Dual Continuously Variable Valve Timing
- B. EPA-estimated 38 MPG highway fuel economy for Elantra Sedan⁸
- C. Spacious interior with best-in-class front legroom
- D. Dual automatic climate control and heated front seats
- E. Power 6-way adjustable driver seat with lumbar support
- F. 7-inch touchscreen navigation system with rearview camera
- G. Proximity entry key with push-button start

ACCENT

YOUR WANTS,
RECONCILED
WITH YOUR NEEDS.

Most of the time, shopping for a new car comes down to a debate between your emotional side, and your rational side. There's the car you want. And there's the car you need. But here's a thought: What if the car you want, and the car you need, could actually be the same car?

Meet Hyundai Accent. Want style, but need fuel economy? Accent delivers EPA-estimated 37 MPG highway fuel efficiency.⁸ Want a roomy interior filled with upscale comfort, convenience and safety features? Accent 5-Door comes with best-in-class cargo volume, six airbags and a long list of safety technologies.²⁴



ACCENT 4-DOOR GLS in Ironman Silver



ANTIDOTE TO STICKER SHOCK

To ensure that what you want doesn't cause sticker shock, our 5-door Accent SE model comes standard with power heated mirrors with integrated turn signals, power door locks, power windows, air conditioning and keyless entry.



CRITICAL ACCLAIM

Edmunds.com raved, "The Accent is an entry-level car that doesn't feel like one, look like one or drive like one."²⁵ And *Motor Trend*, after comparing Accent SE with six other cars in its class, named Accent "King of the 5-door subcompacts."²⁶



BULK UP

Accent 5-door includes a standard 60/40 split fold-down rear seatback that helps you carry larger, bulkier items. With the back seats up, Accent's 21.2 cubic feet of cargo space is still more than twice that of the Nissan Juke crossover utility vehicle.



ACCENT 5-DOOR SE in Premium Black Cloth

HIGHLIGHTS & AVAILABLE FEATURES

- A. 138-HP, 1.6L Gasoline Direct Injection 4-cylinder engine with Dual Continuously Variable Valve Timing
- B. 6-speed manual or automatic transmission with SHIFTRONIC[®]
- C. EPA-estimated 37 MPG highway rating⁸
- D. Spacious 5-door cabin with up to 111.3 cu ft of interior space
- E. 172-Watt AM/FM/SiriusXM[®]/CD/MP3 audio system with 6 speakers
- F. Bluetooth[®] hands-free phone system with voice recognition and audio streaming
- G. Power tilt-and-slide one-touch glass sunroof

SANTA FE

HYUNDAI TAKES
ADVENTURE IN
A NEW DIRECTION.
TWO OF THEM, ACTUALLY.



Life is so full of adventures, they don't all fit into 52 weekends a year. Every day, there are places to go...and plenty of people and gear to take with you. Which is why Hyundai has created not one, but two new vehicles that help you make every day count. Introducing our third-generation Santa Fe models for 2013: The new longer-wheelbase Santa Fe with a standard third row of seating for 6-7 passengers, and the all-new Santa Fe Sport with seating for five.

One look tells you we've thought way outside the conventional CUV box with a new concept our designers call Storm Edge – a reference to the powerful, fluid forces at play in the sculpted lines of the new Santa Fe. One drive will astonish you, thanks to technologies like available Active Cornering Control All Wheel Drive and Driver Selectable Steering Modes.



SANTA FE SPORT 2.0T in Moonstone Silver



CHOOSE YOUR SPORT

Santa Fe Sport combines a potent 190-HP direct-injection 2.4L engine with an impressive highway fuel economy rating (EPA-estimated 29 MPG with front-wheel drive[®]). Up the ante with our 2.0T model's turbocharged 264-HP engine, or the 294-HP 3.3L V6 that powers the longer wheelbase Santa Fe.



HILLSTART ASSIST/DOWNHILL BRAKE CONTROL

All 2013 Santa Fe models feature Hyundai's Hillstart Assist Control, which minimizes backward rolling on steep ascents, and Downhill Brake Control, which helps maintain vehicle control and speed on steep downhill descents.



YES ESSENTIALS[®] SEAT FABRIC

New for 2013 – and standard on all models with cloth seating – is a YES Essentials seat fabric treatment that provides stain-resistant, anti-odor and anti-static properties for added longevity of your Santa Fe's upholstery.³⁰



SANTA FE SPORT 2.0T in Saddle Leather

HIGHLIGHTS & AVAILABLE FEATURES

- A. Santa Fe Sport: Choice of 190-HP, 2.4L Gasoline Direct Injection (GDI) or 264-HP, 2.0L turbocharged 4-cylinder engines
- B. Santa Fe: 294-HP, 3.3L GDI V6 engine
- C. 6-speed automatic transmission with SHIFTRONIC[®] and Active ECO system
- D. 4.3-inch color touchscreen audio with rearview camera
- E. Dual automatic temperature control with CleanAir Ionizer
- F. Heated steering wheel & heated front/second-row seating
- G. Sliding and reclining 40/20/40 split second-row seating
- H. 8-inch touchscreen navigation system with Hyundai Blue Link[®] telematics
- I. Front Wheel Drive or Active Cornering Control All Wheel Drive

TUCSON

THANKFULLY, WE GAVE IT PLENTY OF ROOM TO HAUL HOME ALL THE AWARDS IT'S WON.

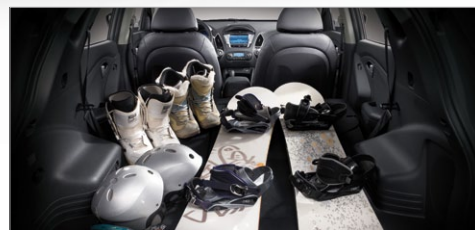


Hyundai Tucson had a pretty good year on the red carpet. *Kelley Blue Book*® named it one of its Top 10 Cars with Best Resale Value, and the Insurance Institute for Highway Safety named Tucson a 2012 IIHS Top Safety Pick.

What's it take to stand out among crossover vehicles? It helps to create a design that turns cold steel into fluidic sculpture. And since versatility is why people want a crossover in the first place, you adopt this as your motto: Space, not waste. That's how Hyundai created the 2013 Tucson, giving it engineering substance and premium amenities to go along with its engaging style.



TUCSON LIMITED PREMIUM PACKAGE in Iris Blue



PACKED WITH FUN

Tucson's tailgate opens wide, offering easy access to a suitcase-swallowing and grocery-hauling rear compartment. Fold down the rear seats, and there's more than 55 cubic feet of cargo space that lets you pack more fun into your journeys.



STAY ON TRACK

Electronic Stability Control is standard on every 2013 Tucson. It senses wheel spin and applies brake force to keep you on your intended path when cornering. Tucson also comes standard with a Traction Control System that helps reduce wheel spin under acceleration, ABS with Brake Assist and available All Wheel Drive.²⁸



SPACE IN

Tucson has the most rear legroom in its class. And more interior passenger volume than Nissan Rogue and Ford Escape. For such a spacious vehicle, Tucson is easy to maneuver in tight spaces. It's got a tighter turning radius than Honda CR-V, Nissan Rogue, Toyota RAV4, and Ford Escape.



TUCSON LIMITED in Saddle Leather

HIGHLIGHTS & AVAILABLE FEATURES

- A. Choice of 165-HP, 2.0L or 176-HP, 2.4L 4-cylinder engine
- B. 5-speed manual or 6-speed automatic transmission with SHIFTRONIC®
- C. Electronically-controlled All Wheel Drive with locking 50/50 split
- D. Proximity key entry with push-button start
- E. Dual automatic temperature control with CleanAir Ionizer
- F. Power 8-way adjustable driver seat with lumbar support
- G. 6.5-inch touchscreen navigation system with rearview camera

HYUNDAI BLUE LINK®: LIFE, MADE EASIER.

Blue Link features enhanced navigation that not only helps you get where you're going, and reveals shortcuts and points of interest along the way.³¹ It can send you real-time traffic updates, find gas stations, and tell you what they're charging. Or find restaurants and tell you what people think of the food. There's location sharing and voice text messaging that keeps you in touch with friends and family.³²

In the event of an emergency, Blue Link instantly knows whom to call and where to send help. You can start your car remotely, or find its location instantly with a handy smartphone app.³³ There's even a useful feature that sends advance notices of regularly scheduled maintenance intervals to keep your car in prime condition. In all, more than 30 services and features are included in three available packages that let you customize this technology to your individual needs. For more details, please visit HyundaiBlueLink.com.



BLUE LINK
MAIN MENU



ENHANCED NAVIGATION
SERVICES



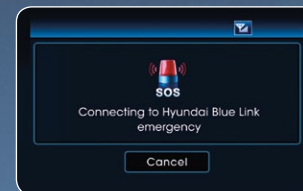
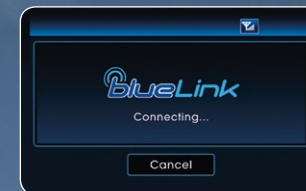
EMERGENCY
ASSISTANCE

³¹ Blue Link® subscription service agreement required. Features vary by subscription plan. Blue Link service works using CDMA-based cellular networks in the 50 United States. Blue Link service is not available where there is no cellular coverage, particularly in enclosed or remote areas. Service availability may be affected by signal strength, foliage, weather, topographical conditions (mountains), nearby structures (tall buildings, tunnels) and other factors. For additional details and system limitations, visit HyundaiBlueLink.com. Hyundai is a registered trademark of Hyundai Motor Company. All rights reserved. ©2012 Hyundai Motor Company. ³² Requires a Blue Link subscription and a Bluetooth-compatible phone paired to the vehicle and assigned as the Primary Driver's mobile phone number in your account. Standard text message rates apply. ³³ Remote Vehicle Start available on vehicles equipped with push-button start and automatic or Dual Clutch Transmission. ³⁴ Blue Link agents will contact existing emergency service responders. Only use Blue Link and corresponding devices when it is safe to do so.



BLUE LINK ASSURANCE PACKAGE

Blue Link helps ensure you're not alone in an emergency. Automatic Collision Notification, SOS Emergency Assistance and Enhanced Roadside Assistance report your position to Hyundai-trained operators and connect you in a flash 24/7/365.³⁴ You can also receive monthly email reports with comprehensive vehicle diagnostics, ensuring your Hyundai delivers optimal performance and fuel economy.



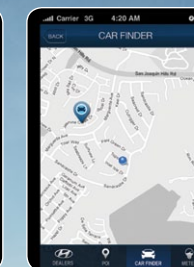
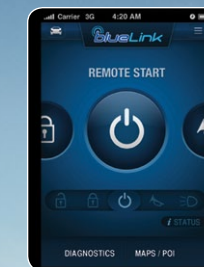
BLUE LINK GUIDANCE PACKAGE

More than getting you where you need to be, the Blue Link Guidance Package can tell you what you'll find – from traffic and gas prices to restaurants and museums. Use voice commands to find points of interest, the fastest routes with the least amount of traffic, the cheapest gas, the highest rated restaurants, and more. There's even an Eco-Coach that lets you monitor your mileage online and offers tips for improving your results. (Includes Assurance + Essentials Packages)



BLUE LINK ESSENTIALS PACKAGE

Blue Link is equal parts fun, convenience and safety. Use your smartphone to remotely start your car, lock/unlock the doors, or flash the lights and honk the horn to find it in a crowded parking lot. Other components let you send voice text messages from your car and share your location with friends. Secure your car with Stolen Vehicle Slowdown and recovery features. Or rest easy with Geo-Fence and Curfew Alerts that notify you (by text, automated phone message or email) when geography or drive-time boundaries are exceeded. Extend your peace of mind with convenient vehicle self-diagnostics. (Includes Assurance Package)



DRIVEN TO ENSURE OUR PLANET STAYS GREEN.

In 2010, Hyundai announced plans to strive for a corporate fuel economy rating that exceeds the U.S. government's stated average fuel economy (CAFE) standards for our lineup of passenger cars and light duty trucks. Through May of 2012, our vehicles and technologies are well on their way towards keeping Hyundai ahead of National Highway Traffic Safety Administration guidelines. And right on track for helping to preserve our beautiful planet as well.

 HYUNDAI
Assurance

REST ASSURED, HYUNDAI HAS YOUR BACK.

More than a decade ago, Hyundai pioneered America's Best Warranty to show you the faith we have in our cars. Since then, our dedication to customer service has developed into Hyundai Assurance, an umbrella of services that includes America's Best Warranty, 24/7 Roadside Assistance and our newest feature – The Hyundai Trade-In Value Guarantee.²⁹ Our commitment to you in the enduring value of every vehicle we build.

AMERICA'S BEST WARRANTY

| | |
|--|---|
| POWERTRAIN LIMITED WARRANTY 10 YEARS / 100,000 MILES | NEW VEHICLE LIMITED WARRANTY 5 YEARS / 60,000 MILES |
| ANTI-PERFORATION WARRANTY 7 YEARS / UNLIMITED MILES | 24-HOUR ROADSIDE ASSISTANCE 5 YEARS / UNLIMITED MILES |

See dealer for LIMITED WARRANTY details. Fuel economy estimated by EPA for comparison only. Mileage may vary. While the information contained in this brochure was correct at the time of printing, specifications and equipment can change. Feature comparisons based on competitor information available at the time of printing. No warranty or guarantee is being extended in this brochure, and Hyundai reserves the right to change product specifications and equipment at any time without incurring obligations. Some vehicles are shown with optional equipment. Specifications apply to U.S. vehicles only. Please contact your Hyundai dealer for current vehicle specifications.



HYUNDAI CARES

MAKING AN IMPACT IN AMERICA

Our state-of-the-art manufacturing facility in Montgomery, Alabama – one of the most advanced in the world – builds over half the cars we sell in America. Hyundai has engineering facilities in Michigan, plus design/research and testing grounds in California. We've created a lot of things we're proud of at these facilities, but chief among them is jobs. In 2011, our U.S. operations contributed more than 94,000 jobs and \$7 billion to the national economy.



Manufacturing Facility in Alabama



Proving Ground in California



Design Center in California

OUR MOST POWERFUL ENGINE IS DRIVEN BY HOPE

What started in 1998 as a grass-roots effort by New England Hyundai dealers to raise money for pediatric cancer has grown into a powerful nationwide charity called Hyundai Hope on Wheels. With the purchase of every new vehicle, Hyundai owners help fund life-saving research. With over 800 dealerships, those numbers add up quickly (over \$57 million raised by the end of 2012). To help us find a cure, please visit HyundaiHopeOnWheels.org.



2013 EQUUS



HIGHLIGHTS AND AVAILABLE FEATURES

- 429-HP, 5.0L direct injection DOHC V8 engine
- 8-speed automatic transmission with SHIFTRONIC®
- Electronically controlled air suspension
- Power tilt-and-slide glass sunroof
- Proximity key entry with push-button start
- Premium leather interior w/ real-wood trim
- Dual automatic temperature control with Air Quality System
- Heated leather/wood-trimmed power tilt-and-telescopic steering wheel
- 12-way power driver seat w/ lumbar adjust
- 10-way power adjustable front passenger seat
- Integrated Memory System for driver seat, steering wheel, side mirrors
- Heated/cooled front seats w/ driver massage
- First-class reclining right rear passenger seat w/ power leg rest and massage
- Power reclining heated and cooled rear seats
- Thermoelectric rear console refrigerator
- Power sunshades (rear and side windows)
- Premium 8" navigation system
- Lexicon® 7.1 Discrete Surround Sound premium audio system with 17 speakers
- Bluetooth® hands-free phone system
- Rear entertainment system w/ 8" monitor
- Smart Cruise Control
- Rain-sensing wipers & auto-defog windshield
- Acoustic-laminated windshield/windows
- 19" nine-spoke chrome finish alloy wheels
- Driver Information System w/ multimedia controller

SAFETY

- Vehicle Stability Management System with pre-collision warning
- Electronic Stability Control
- Traction Control System
- Lane Departure Warning System
- 4-wheel disc ABS brakes with Brake Assist and Electronic Brake-force Distribution
- Front & rear parking assistance system with rearview camera
- Electronic Parking Brake with automatic vehicle hold
- Adaptive Front Lighting System with auto-leveling Xenon HID headlights
- Forward-view cornering camera
- 9-airbag safety system
- Tire Pressure Monitoring System

2013 GENESIS



HIGHLIGHTS AND AVAILABLE FEATURES

- Choice of 333-HP 3.8L direct injection DOHC V6 or 429-HP 5.0L direct injection DOHC V8 engine
- 8-speed automatic transmission with SHIFTRONIC®
- Independent 5-link suspension
- SACHS® amplitude selective damping shocks
- Proximity key entry with push-button start
- Dual automatic climate control
- Power tilt-and-slide glass sunroof
- Heated leather seating surfaces
- Cooled drivers seat
- Power tilt-and-telescopic leather wrapped steering wheel with cruise, audio and phone controls
- Ultimate navigation system with 8" display
- Integrated Memory System for driver seat, steering wheel, side mirrors
- SiriusXM® Satellite Radio & NavTraffic®¹⁴
- 528-Watt Lexicon® 7.1 Discrete Surround Sound audio system with 17 speakers
- iPod® / USB auxiliary input jacks
- Bluetooth® hands-free phone system
- Hyundai Blue Link® telematics
- Smart Cruise Control
- 19" premium machined finish alloy wheels
- LED headlight and tail light accents
- Auto-dimming mirrors
- Power folding/heated mirrors w/ puddle lamps
- Rain-sensing wipers & auto-defog windshield
- Power rear sunshade
- Driver Information System with multimedia controller

SAFETY

- Electronic Stability Control
- Traction Control System
- Anti-lock Braking System with Brake Assist and Electronic Brake-force Distribution
- Electronic active front head restraints
- Front and rear parking assistance sensors with rear backup camera
- Electronic Parking Brake with automatic vehicle hold
- Adaptive Front Lighting System with auto-leveling Xenon HID headlights
- Lane Departure Warning System
- 8-airbag safety system
- Tire Pressure Monitoring System

2013 GENESIS COUPE



HIGHLIGHTS AND AVAILABLE FEATURES

- 274-HP 2.0L twin-scroll turbocharged DOHC 4-cylinder or 348-HP 3.8L direct injection DOHC V6 engine
- Dual Continuously Variable Valve Timing
- 6-speed close-ratio manual transmission or 8-speed automatic transmission with SHIFTRONIC® and paddle shifters
- Torsen® limited-slip differential
- Sport-tuned suspension
- Track-tuned suspension (R-Spec & Track)
- Proximity key entry with push-button start
- Fully automatic temperature control
- Leather seating surfaces
- Tilt-and-telescopic leather steering wheel with audio & cruise controls
- Power tilt-and-slide sunroof
- Auto-dimming rearview mirror with Homelink® and compass
- Touchscreen navigation with NavTraffic®¹⁴
- 360-Watt Infinity® premium audio system with 10 speakers
- iPod®/USB and auxiliary input jacks
- Bluetooth® hands-free phone system with voice recognition and audio streaming
- Hyundai Blue Link® telematics
- Electroluminescent gauge cluster with information display screen
- 18" Euroflange alloy wheels or 19" Euroflange alloy wheels with gunmetal finish
- Rear LED taillights & dual exhaust
- Front fog lights

SAFETY

- Brembo® braking system
- Electronic Stability Control
- Traction Control System
- Anti-lock Braking System with Brake Assist and Electronic Brake-force Distribution
- Backup warning system
- Xenon HID Headlights
- Seatbelt pretensioners
- Active front head restraints
- Automatic headlights w/ daytime running lights
- 6-airbag safety system
- Tire Pressure Monitoring System

2013 AZERA



HIGHLIGHTS AND AVAILABLE FEATURES

- 293-HP 3.3L direct injection V6 engine with Dual Continuously Variable Valve Timing
- 6-speed automatic transmission with SHIFTRONIC®
- Active ECO system
- SACHS® amplitude selective damping shock absorbers
- Proximity key entry with push-button start
- Dual automatic climate control
- Panoramic sunroof
- Leather seating surfaces
- Heated front and rear seats
- Ventilated front seats
- 12-way adjustable power driver seat
- 8-way adjustable power front passenger seat
- Power tilt-and-telescopic steering wheel with cruise, audio and phone controls
- Cooled glovebox compartment
- LED interior lighting
- Power rear and manual side-window sunshades
- Navigation system with 7" touchscreen display and rearview camera
- 550-Watt Infinity® Logic 7® Surround Sound premium audio system with 12 speakers
- SiriusXM® Satellite Radio & NavTraffic®¹⁴
- HD Radio® technology with multicasting
- iPod® / USB auxiliary input jacks
- Bluetooth® hands-free phone with voice recognition and audio streaming
- Hyundai Blue Link® telematics system
- 19" Hyper Silver finish alloy wheels
- HID Xenon headlights with LED accents
- Power side mirrors with turn-signal indicators
- Chrome-tipped dual exhaust

SAFETY

- Vehicle Stability Management System
- Electronic Stability Control
- Traction Control System
- Anti-lock Braking System with Brake Assist and Electronic Brake-force Distribution
- 9-airbag safety system
- Active front head restraints
- Parking assistance sensors
- Tire Pressure Monitoring System

2013 SONATA & 2.0T



HIGHLIGHTS AND AVAILABLE FEATURES

- 198 or 200-HP, 2.4L direct injection 4-cylinder engine with Dual Continuously Variable Valve Timing
- 274-HP, 2.0L direct injection 4-cylinder engine with twin-scroll turbocharger
- 6-speed automatic transmission with SHIFTRONIC®
- Steering-wheel-mounted paddle shifters
- Active ECO System
- Proximity key entry with push-button start
- Dual automatic climate control
- Panoramic sunroof
- Leather seating surfaces
- Heated front and rear seats
- Power driver seat with lumbar support
- Leather-wrapped steering wheel & shift knob
- Steering wheel audio, Bluetooth® and cruise controls
- Navigation system with 7" touchscreen display
- Rearview camera
- 400-Watt Infinity® AM/FM/SiriusXM®/CD/MP3 premium audio system with 9 speakers
- HD Radio® Technology with multicasting
- iPod®/USB and auxiliary input jacks
- Bluetooth® hands-free phone system with phonebook transfer and audio streaming
- Hyundai Blue Link® telematics system
- 17" Eco-spoke aluminum alloy wheels
- 18" Hyper Silver alloy wheels
- Automatic headlights
- Power side mirrors with turn-signal indicators
- Chrome-tipped dual exhaust

SAFETY

- NHTSA Five-Star safety rating
- Electronic Stability Control
- Traction Control System
- Anti-lock Braking System with Brake Assist and Electronic Brake-force Distribution
- Active front head restraints
- 6-airbag safety system
- Tire Pressure Monitoring System

2013 SONATA HYBRID



HIGHLIGHTS AND AVAILABLE FEATURES

- Atkinson Cycle 4-cylinder Hybrid engine with electric motor
- Permanent magnet high-power density motor
- Lithium polymer battery system with lifetime warranty
- Hybrid Starter Generator
- 6-speed automatic transmission with SHIFTRONIC®
- Proximity key entry with push-button start
- Dual zone automatic climate control
- Panoramic sunroof
- Leather seating surfaces
- Heated front and rear seats
- Power driver seat with lumbar support
- Leather-wrapped steering wheel & shift knob
- Steering wheel audio, Bluetooth® and cruise controls
- Electroluminescent instrument cluster with color display
- Navigation system with 7" touchscreen display with voice commands and rearview camera
- 400-Watt Infinity® AM/FM/SiriusXM®/CD/MP3 premium audio system with 9 speakers
- HD Radio® Technology with multicasting
- iPod®/USB and auxiliary input jacks
- Hyundai Blue Link® telematics system
- 17" Eco-spoke aluminum alloy wheels
- Automatic headlights with LED accents
- Power side mirrors with turn-signal indicators
- LED taillights
- Front fog lights

SAFETY

- NHTSA Five-Star safety rating
- Electronic Stability Control
- Traction Control System
- Anti-lock Braking System with Brake Assist and Electronic Brake-force Distribution
- Active front head restraints
- 6-airbag safety system
- Tire Pressure Monitoring System

2013 VELOSTER & TURBO



HIGHLIGHTS AND AVAILABLE FEATURES

- 138-HP 1.6L Gasoline Direct Injection DOHC or 201-HP 1.6L twin-scroll turbocharged GDI DOHC 4-cylinder engine
- Dual Continuously Variable Valve Timing
- 6-speed manual transmission or 6-speed EcoShift Dual Clutch Transmission (DCT) with paddle shifters (1.6L) or 6-speed automatic transmission with SHIFTRONIC® and paddleshifters
- Active ECO System (DCT & A/T only)
- Sport-tuned steering
- Proximity key entry with push-button start
- Leather-wrapped tilt-and-telescopic steering wheel with cruise, audio and phone controls
- Panoramic sunroof
- 7" multimedia touchscreen
- Navigation system with rearview camera
- 450-Watt Dimension premium audio with 8 speakers including rear subwoofer
- Pandora® Internet Radio functionality
- Bluetooth® hands-free phone system with voice recognition and audio streaming
- iPod®/USB and auxiliary input jacks
- RCA cable and 115V outlet for video playback
- Hyundai Blue Link® telematics
- 17" five-spoke alloy wheels (1.6L)
- 18" alloy wheels with painted inserts (1.6L)
- 18" alloy wheels with chrome accents (Turbo)
- Projector headlights with LED headlight accents
- Turbo bodykit
- Dual center chrome exhaust tips

SAFETY

- Vehicle Stability Management System
- Electronic Stability Control
- Traction Control System
- Anti-lock Braking System with Brake Assist and Electronic Brake-force Distribution
- 4-wheel disc brakes
- 6-airbag safety system
- Tire Pressure Monitoring System

2013 ELANTRA & COUPE



HIGHLIGHTS AND AVAILABLE FEATURES

- 1.8L DOHC 4-cylinder engine with Dual Continuously Variable Valve Timing
- 6-speed manual or automatic transmission with SHIFTRONIC®
- Active ECO System (A/T only)
- Sport-tuned suspension (Coupe only)
- Motor Driven Power Steering
- Proximity key entry with push-button start
- Dual automatic temperature control with CleanAir Ionizer & auto defog
- Power tilt-and-slide sunroof
- Leather seating surfaces
- Heated front and rear seats
- Leather-wrapped steering wheel & shift knob
- Steering wheel audio and cruise controls
- Sliding front center armrest
- 60/40 split fold-down rear seatback
- Rear-seat center armrest with cupholders
- Touchscreen navigation system with rearview camera
- 360-Watt AM/FM/SiriusXM®/CD premium audio system with 6 speakers
- iPod®/USB and auxiliary input jacks
- Bluetooth® hands-free phone system with voice recognition and audio streaming
- 17" Euro flange alloy wheels
- Automatic headlights
- Power heated side mirrors with integrated turn signals
- Rear spoiler with integrated brake light (Coupe)

SAFETY

- Vehicle Stability Management System
- Electronic Stability Control
- Traction Control System
- Anti-lock Braking System with Brake Assist and Electronic Brake-force Distribution
- 4-wheel disc brakes
- 6-airbag safety system
- Tire Pressure Monitoring System

2013 ELANTRA GT



HIGHLIGHTS AND AVAILABLE FEATURES

- 1.8L DOHC 4-cylinder engine with Dual Continuously Variable Valve Timing
- 6-speed manual or automatic transmission with SHIFTRONIC®
- Active ECO System (A/T only)
- Motor Driven Power Steering
- Driver Selectable Steering modes with comfort, normal and sport settings
- Proximity key entry with push-button start
- Dual automatic temperature control with CleanAir Ionizer & auto defog
- Power tilt-and-slide panoramic glass sunroof
- Leather seating surfaces
- Heated front seats
- Leather-wrapped tilt steering wheel & shift knob
- Steering wheel audio and cruise controls
- Sliding front center armrest
- Cooled glove box compartment
- 60/40 split fold-down rear seatback
- Up to 51 cu-ft of rear cargo storage
- Rear-seat center armrest with cupholders
- Touchscreen navigation system with rearview camera
- 172-Watt AM/FM/SiriusXM®/CD audio system with 6 speakers
- iPod®/USB and auxiliary input jacks
- Bluetooth® hands-free phone system with voice recognition and audio streaming
- 17" split-spoke alloy wheels
- Automatic headlights

SAFETY

- Vehicle Stability Management System
- Electronic Stability Control
- Traction Control System
- 4-wheel disc brakes
- Anti-lock Braking System with Brake Assist and Electronic Brake-force Distribution
- Adjustable head restraints for all seats
- 7-airbag safety system with driver knee airbag
- Tire Pressure Monitoring System

2013 ACCENT 4&5 DOOR



HIGHLIGHTS AND AVAILABLE FEATURES

- 1.6L direct injection DOHC 4-cylinder engine w/ Dual Continuously Variable Valve Timing
- 6-speed manual or automatic transmission with SHIFTRONIC®
- Active ECO System (A/T only)
- Remote keyless entry system
- Air conditioning
- Leather-wrapped tilt steering wheel & shift knob
- Steering-wheel-mounted audio/cruise controls
- Premium cloth seats and door inserts
- 6-way adjustable driver seat with armrest
- Power door locks
- Power windows with driver auto-down
- Sliding armrest storage box
- 60/40 split fold-down rear seatback
- 172-Watt AM/FM/XM®/CD/MP3 audio system with 6 speakers
- iPod®/USB and auxiliary input jacks
- Bluetooth® hands-free phone system with voice recognition and audio streaming
- 16" alloy wheels
- Front fog lights
- Bodycolor mirrors and door handles
- Rear wiper (5-Door)

SAFETY

- Vehicle Stability Management System
- Electronic Stability Control
- Traction Control System
- Anti-lock Braking System with Brake Assist and Electronic Brake-force Distribution
- Active front head restraints
- Adjustable head restraints for all seats
- 6-airbag safety system
- Tire Pressure Monitoring System

2013 SANTA FE



HIGHLIGHTS AND AVAILABLE FEATURES

- 190-HP 2.4L direct injection 4-cylinder or 264-HP 2.0L turbocharged direct injection 4-cylinder engine with Dual Continuously Variable Valve Timing
- 294-HP 3.3L direct injection V6 engine with Dual Continuously Variable Valve Timing
- 6-speed automatic transmission with SHIFTRONIC®
- Active Cornering Control AWD
- Driver Selectable Steering modes with comfort, normal and sport settings
- Proximity key entry with push-button start
- Dual automatic climate control with CleanAir Ionizer
- Panoramic sunroof
- Heated & leather-wrapped steering wheel
- Heated front and rear leather seats
- Power front seats
- 40/20/40 split fold-down 2nd row seats
- 2nd row captain's chair and 3rd row seats
- Sliding and reclining 2nd row seats
- Up to 80.0 cu-ft of rear cargo storage
- Hidden underfloor cargo storage compartment
- Navigation system with 8" touchscreen and rearview camera
- 4.3" touchscreen color audio system with rearview camera
- 550-Watt Infinity® Logic 7® surround sound audio system with 12 speakers
- iPod®/USB and auxiliary input jacks
- Bluetooth® hands-free phone system with voice recognition and audio streaming
- Hyundai Blue Link® telematics system
- 19" Hyper Silver alloy wheels
- Automatic headlights with LED accents
- Roof side rails (non-sunroof models)
- Power side mirrors with turn-signal indicators
- Rear spoiler with integrated brake light

SAFETY

- Vehicle Stability Management System
- Electronic Stability & Traction Control Systems
- Anti-lock Braking System with Brake Assist and Electronic Brake-force Distribution
- Downhill Brake Control
- Hillstart Assist Control
- 7-airbag safety system
- Tire Pressure Monitoring System

2013 TUCSON



HIGHLIGHTS AND AVAILABLE FEATURES

- 165-HP, 2.0L 4-cylinder engine or 176-HP, 2.4L 4-cylinder engine with Continuously Variable Valve Timing
- 5-speed manual or 6-speed automatic transmission with SHIFTRONIC®
- SACHS® shock absorbers
- On-demand All Wheel Drive
- Proximity key entry with push-button start
- Dual front automatic climate control with CleanAir Ionizer
- Panoramic sunroof
- Leather seating surfaces
- Heated front seats
- 8-way adjustable power driver seat with lumbar support
- Leather-wrapped steering wheel & shift knob
- Steering wheel audio, Bluetooth® and cruise controls
- Front center console armrest storage box
- Integrated door bottle holders
- 60/40 split fold-down second-row seats
- Up to 55.8 cu ft of rear cargo storage
- Navigation system with 6.5" touchscreen display and review camera
- 360-Watt AM/FM/SiriusXM®/CD/MP3 audio system with 6 speakers and rear subwoofer
- iPod®/USB auxiliary input jacks & iPod cable
- Bluetooth® hands-free phone system with audio streaming
- 18" alloy wheels
- Automatic headlights
- Roof side rails
- Power side mirrors with turn-signal indicators
- Rear spoiler with integrated brake light
- Rear window wiper

SAFETY

- Electronic Stability Control
- Traction Control System
- Anti-lock Braking System with Brake Assist and Electronic Brake-force Distribution
- Hillstart Assist Control
- Downhill Brake Controls
- Active front head restraints
- 6-airbag safety system
- Tire Pressure Monitoring System

FOOTNOTES

- ¹ From "Hyundai Maintains No. 1 Spot for Brand Loyalty on Kbb.com for Second Consecutive Quarter; Toyota Closing In." on Kelley Blue Book's www.kbb.com. Kelley Blue Book® is a registered trademark of Kelley Blue Book Co., Inc.
- ² <http://blogs.motortrend.com/trading-places-is-hyundai-the-new-honda-18381.html>.
- ³ Based on fleetwide model year 2010 manufacturer data from the EPA Light-Duty Automotive Technology, Carbon Dioxide Emissions and Fuel Economy Trends: 1975-2011 Report. Hyundai excludes the Kia brand.
- ⁴ www.wardsauto.com.
- ⁵ IIHS Top Safety Pick: Based on Insurance Institute for Highway Safety 40-mph frontal crash test, 31-mph side-impact test, 20-mph rear-impact test and availability of Electronic Stability Control. Visit www.iihs.org.
- ⁶ *AUTOMOBILE Magazine*, June 2012.
- ⁷ *Ward's Ten Best Engines*, 2009-2011.
- ⁸ EPA estimates for comparison only. Mileage may vary. If EPA estimates are not available at the time of printing, Hyundai estimates based on internal testing are cited. Your actual mileage will vary with options, driving conditions, driving habits and vehicle's condition.
- ⁹ Lexicon® is a registered trademark of Harman International Industries, Incorporated.
- ¹⁰ Edmunds.com 2012 Genesis Sedan Review, July 2011.
- ¹¹ *Kelley Blue Book's kbb.com*, February 2011.
- ¹² Premium fuel ratings.
- ¹³ Brembo® is a registered trademark of Brembo SpA. Torsen® is a registered trademark of Gleason Works, the Corporation, New York.
- ¹⁴ iPod® is a registered trademark of Apple Inc. SiriusXM® Satellite Radio and NavTraffic® require a SiriusXM subscription, sold separately after a complimentary 90-day introductory period. All fees and programming are subject to change. Traffic and weather channels only available in select markets, and SiriusXM service is only available in the 48 contiguous United States. See your dealer for details. The SiriusXM name is a registered trademark of SiriusXM Satellite Radio Inc. All other trademarks are property of their respective owners. The HD Radio, HD Digital Radio and HD Digital Radio Alliance are wordmarks and trademarks of iBiquity Digital Corporation, used under license by the HD Digital Radio Alliance. The Bluetooth® wordmark and logos are registered trademarks owned by Bluetooth SIG, Inc., and any use of such marks by Hyundai is under license. Other trademarks are those of their respective owners.
- ¹⁵ Infinity® is a registered trademark of Harman International Industries, Inc.

- ¹⁶ www.epa.gov.
- ¹⁷ *AUTOMOBILE Magazine*, February 2011 and *Car and Driver*, November 2010.
- ¹⁸ Government star ratings are part of the National Highway Traffic Safety Administration's (NHTSA's) New Car Assessment Program (www.safercar.gov).
- ¹⁹ *Edmunds.com*, September 19, 2011.
- ²⁰ Xbox 360® is a registered trademark of Microsoft Corp.
- ²¹ Special care and maintenance required. See your Veloster owner manual for details.
- ²² *MotorTrend.com*, December 2, 2011
- ²³ MPG comparison based on primary sub-compact competitive set defined by Hyundai Motor America, which includes: 2012 Toyota Yaris, Honda Fit, Chevrolet Sonic, Ford Fiesta, Mazda 2 and Nissan Versa. Other Hyundai companies excluded from this comparison.
- ²⁴ The Supplemental Restraint System (SRS) is designed to work with the 3-point seatbelt system. The SRS deploys in certain frontal and/or side-impact conditions where significant injury is likely. The SRS is not a substitute for seatbelts, which should be worn at all times. Children under the age of 13 should be restrained securely in the rear seat. NEVER place a rear-facing child seat in the front seat of a vehicle that has a passenger-side airbag.
- ²⁵ *Edmunds.com* comparison test with 2012 Accent GLS, October 2011.
- ²⁶ *Motor Trend*, April 2012.
- ²⁷ Tucson GLS and Limited FWD models only.
- ²⁸ Electronic Stability Control (ESC) cannot control your vehicle's stability under all driving situations. ESC is not a substitute for safe driving practices. No system, no matter how advanced, can overcome physics or correct poor driving. The driver is always responsible for controlling the vehicle and must use caution to avoid loss of control in all driving conditions. Speed, road conditions and driver steering input will affect whether ESC can help prevent loss of control. See Owner's Manual for details. The Traction Control System is meant to enhance conscientious driving habits and is not a substitute for safe driving practices.
- ²⁹ Program applies to new vehicle purchases. Lease vehicles do not qualify for the benefit. Terms and conditions subject to change. This Program is not to be considered a guaranteed "trade-in" value or range of guaranteed "trade-in" values as defined by the State of Texas. For more information and special offers, visit your local Hyundai dealer.
- ³⁰ Yes Essentials® is a trademark of Sage Automotive Interiors.®

As part of Hyundai's commitment to a responsible environment, this brochure is printed using paper certified by the Forest Stewardship Council™. FSC® certification helps ensure that the highest social and environmental standards are met in the making of the paper we use, contributing to conservation, responsible management, and community-level benefits for people near the forests.





ELANTRA COUPE SE in Shimmering Air Silver / ELANTRA SEDAN LIMITED in Radiant Silver / ELANTRA GT TECH PACKAGE in Shimmering Air Silver



SEDAN LIMITED TECHNOLOGY PACKAGE in Gray Leather

HIGHLIGHTS & AVAILABLE FEATURES

- A. 148-HP, 1.8L DOHC 4-cylinder engine with Dual Continuously Variable Valve Timing
- B. EPA-estimated 38 MPG highway fuel economy for Elantra Sedan⁸
- C. Spacious interior with best-in-class front legroom
- D. Dual automatic climate control and heated front seats
- E. Power 6-way adjustable driver seat with lumbar support
- F. 7-inch touchscreen navigation system with rearview camera
- G. Proximity entry key with push-button start