

COLORADO

2006



CHEVROLET



Left to right: Colorado LT Crew Cab 4x4, shown in Victory Red with available Z71 Suspension Package.
Colorado LS Regular Cab 4x4, shown in Silver Birch Metallic with available equipment.
Colorado LT Extended Cab, shown in Yellow with available Colour-keyed Appearance Package.

COLORADO

2006



For more information about Colorado
visit our Web site at colorado.gmcanada.com

THREE CABS. THREE SUSPENSIONS. 15 MODELS. ONE RUGGED CHEVY PICKUP.

How do you measure the capabilities of a mid-size pickup? It's not just horsepower output, hauling capacities or generous cab dimensions. It's how a truck measures up against your specific set of needs and expectations. That's why the Chevy Colorado offers two in-line Vortec engines, plus every suspension is available with every cab configuration, giving you a mid-size pickup that fits your life. And you can feel confident that no matter which model you choose, Colorado is a rock-solid Chevy Truck – the most dependable, longest-lasting trucks on the road.*
Chevy Colorado. For All Life's Roads.

*Dependability based on longevity; 1981–July 2004 full-line light-duty truck company registrations.
Excludes other GM divisions.

CHEVROLET



FOR ALL LIFE'S ROADS

COLORADO

CREW CAB

ROOM TO MOVE.

Colorado expands on the definition of the mid-size pickup by adding not just capacity, but also comfort. Enter the Colorado Crew Cab. Where seating for six is combined with significant hauling capabilities – GVWRs top out at 2404 kg (5300 lb.). After studying the specifications of the Colorado Crew Cab, other mid-size pickups will seem a bit confining.

CREW CAB



Colorado LT Crew Cab 4x4, shown in Victory Red with available Z71 Suspension and other available features.



COLORADO

CREW CAB INTERIOR

SHARE SOME QUALITY TIME WITH YOUR CREW.

There are other cabs with six-passenger seating capacity. What distinguishes the Colorado Crew Cab is the fact that it accommodates up to six in a truly comfortable, spacious environment. That distinction is clear the moment you enter the Colorado Crew Cab through one of the four, wide-opening doors. What you'll find is space. Lots of it. Enough for six real-sized people. Spend some quality time together – inside Colorado Crew Cab.

KEY FEATURES:

- Front reclining bucket seats with Deluxe cloth
- Centre floor console with storage compartment, cupholders and armrest
- Available reclining front 60/40 split-bench seat
- Standard 60/40 split flat-folding rear seats
- The roomy cab provides seating for up to six
- Available heated leather-appointed front bucket seats.



The standard 60/40 split flat-folding rear seat provides excellent interior flexibility to handle both passengers and cargo.



Colorado LT Crew Cab 4x4 interior, shown in Light Cashmere with flat-folding divided bench rear seat and available leather-appointed seating.

COLORADO

EXTENDED CAB

EXTENDED CAB

Colorado LT Extended Cab, shown in Victory Red with the available Sport Suspension and XTREME Packages.

BE CAREFUL WHAT YOU WISH FOR.

If only there was a pickup with a mean look and real attitude. You wished for it. You got it. Finally, a pickup that really makes its presence felt: the available XTREME Package. It adds such brash styling elements as 18-inch aluminum wheels, bodyside ground effects, front and rear spoilers, and other bold accents. It takes your 2WD Regular, Extended or Crew Cab to the XTREME.



COLORADO

REGULAR CAB

GET SERIOUS.

Colorado doesn't just look like one seriously strong pickup. The numbers tell the tale: the Regular Cab Z85 2WD models can handle a payload of up to 702 kg (1547 lb.).* And the trailering capacity weighs in at 1814 kg (4000 lb.).† These are the kinds of numbers you may expect from a full-size pickup. Colorado. The serious mid-size pickup.

*Base payload capacity includes weight of driver, passengers, optional equipment and cargo.

†Maximum trailer ratings are calculated assuming a properly equipped base vehicle, plus driver.



REGULAR CAB

Colorado LT Regular Cab, shown in Yellow with available Colour-keyed Appearance Package.



COLORADO

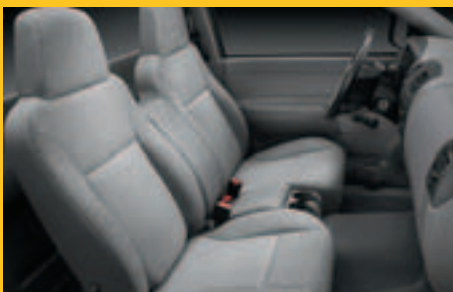
EXTENDED CAB AND REGULAR CAB INTERIORS

MAKE YOURSELF COMFORTABLE.

It isn't only strength and durability that Chevy engineers take seriously. They are also dedicated to comfort – your comfort, because they know how much time you spend inside your cab. Even the second-row passengers in Extended Cabs are well treated, thanks to the available forward-facing rear seats. Designed with convenience and versatility in mind, they also include additional under-seat storage space. Make yourself very comfortable. Inside Colorado.

KEY FEATURES:

- Standard 60/40 split-bench cloth front seat
- Standard forward-facing fold-up rear seats with flat-folding under-seat storage compartment in Extended Cabs
- Standard Comfort Convenience Package includes tilt adjustable steering column and cruise control
- Available reclining high-back front bucket seats with centre floor console.



You have two seating choices with Regular Cab: the standard 60/40 cloth reclining split-bench (shown), or the available bucket seats with Deluxe cloth.



The forward-facing rear fold-up seats add to the practicality of the Extended Cab interior. They include under-seat storage boxes that can be folded flat to extend the load floor.





Colorado LT Extended Cab interior, shown in Light Cashmere Deluxe cloth with available features.

COLORADO

CONTROLS

BECOME BETTER INFORMED.

Colorado incorporates many examples of the latest in technology. In fact, Colorado is so sophisticated that it employs advanced technology to monitor the status of various vehicle functions. This data is then relayed to you through the standard Driver Information Centre mounted on the instrument panel. No more guesswork with questions like when to change your oil. But to become even better informed about everything Colorado has to offer, we recommend a test drive.

KEY FEATURES:

- Standard instrumentation includes a tachometer and an engine temperature gauge
- Standard CD player and six-speaker sound system on LT Extended and Crew Cab models
- Standard, two auxiliary power outlets
- Available in-dash six-disc CD changer
- Available auto-dimming interior rear-view mirror.



XTREME white gauge faces with bright trim rings add performance details (U.S. instrumentation shown in this brochure is Metric in Canada).



COLORADO

POWER

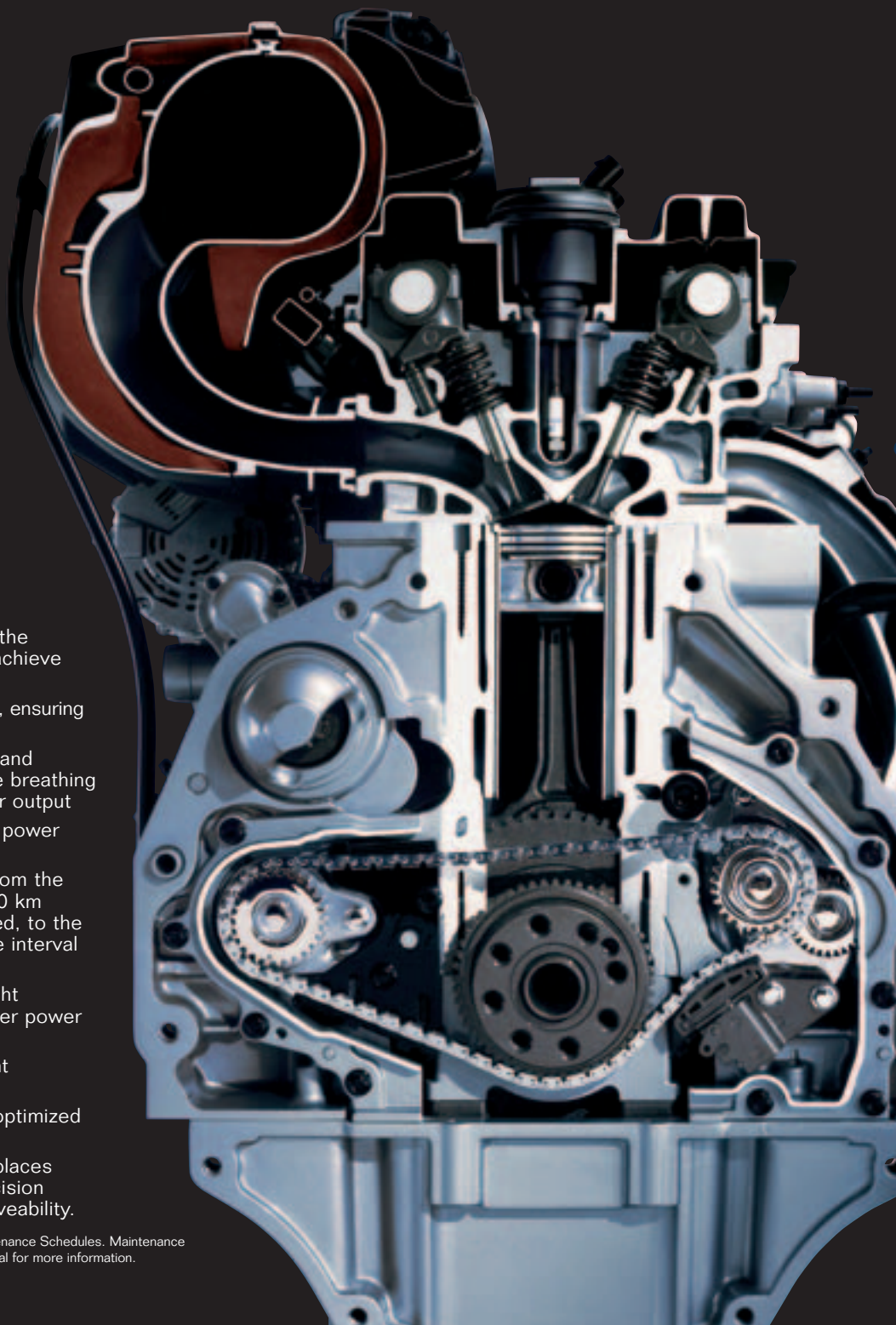
TIMING IS EVERYTHING.

There is more to an engine than simply its horsepower rating. Engines have to deliver smooth, efficient performance across their operating range. And that's exactly what Colorado delivers with its two innovative in-line Vortec engines. They feature variable valve timing that not only helps optimize power output but also efficiency. And with the high cost of fuel today, the timing couldn't be better.

FEATURES OF COLORADO'S ENGINE LINEUP:

- Standard 175 hp Vortec 2800 in-line four
- Available 220 hp Vortec 3500 in-line five (standard on Crew Cab models with Z71 or ZQ8 suspension)
- The use of airplane grade A356 aluminum in the engine block and head helps these engines achieve tremendous strength, while reducing weight
- Dual balance shafts counteract engine vibration, ensuring smooth and quiet operation
- Dual overhead camshafts control two intake and exhaust valves per cylinder, improving engine breathing and adding to the engines' exceptional power output
- Variable exhaust valve timing increases both power output and efficiency
- Long-life features extend service intervals, from the spark plugs that are designed to last 166,000 km (100,000 mi.) before they need to be replaced, to the DEX-COOL engine coolant that has a change interval of 240,000 km (150,000 mi.)*
- Pressed-in-steel cylinder liners with lightweight pistons enhance the ability to generate greater power from a smaller displacement
- A broad torque curve translates into excellent responsiveness at nearly any speed
- Performance is continuously monitored and optimized by the powertrain control module (PCM)
- Electronic Throttle Control (drive-by-wire) replaces mechanical functions with the increased precision provided by electronic control, optimizing driveability.

*When properly maintained in accordance with the Owner's Manual and Maintenance Schedules. Maintenance needs vary with use and driving conditions. Please refer to the Owner's Manual for more information.



COLORADO

TECHNOLOGY

ENVIRONMENTAL MEASURES

Colorado isn't only easy on gas – there are many ways this truck is also easy on the environment. It is more than 95 percent recyclable. The lighting systems are also free of mercury and cadmium.

1 BOX CHANNEL FRAME

Colorado's strength is largely the product of its box channel frame. The use of seven cross beams further enhance the frame's stiffness and contribute to Colorado's stable handling. Engine vibration is minimized due to the strategic placement of powertrain mounts.

3 BRAKE SENSORS

Monitoring the condition of your brakes is easy. Colorado is equipped with standard audible wear sensors, and a brake fluid level sensor that alerts you if the level falls below the required minimum.

4 AUTOMATIC LOCKING REAR DIFFERENTIAL

The automatic locking rear differential enhances low-speed traction on slippery surfaces. It is included with the available Z71 Suspension on all 4x4 models and 2WD Crew Cab models. It is available on other models when equipped with automatic transmission.

CORROSION PROTECTION

Canada's harsh climate necessitates the use of road salt. Fortunately, Colorado is engineered with extensive corrosion protection features, including an aluminized stainless steel exhaust system, in addition to the use of two-sided galvanized steel in all exterior body panels except the roof.

2 INSTA-TRAC 4x4

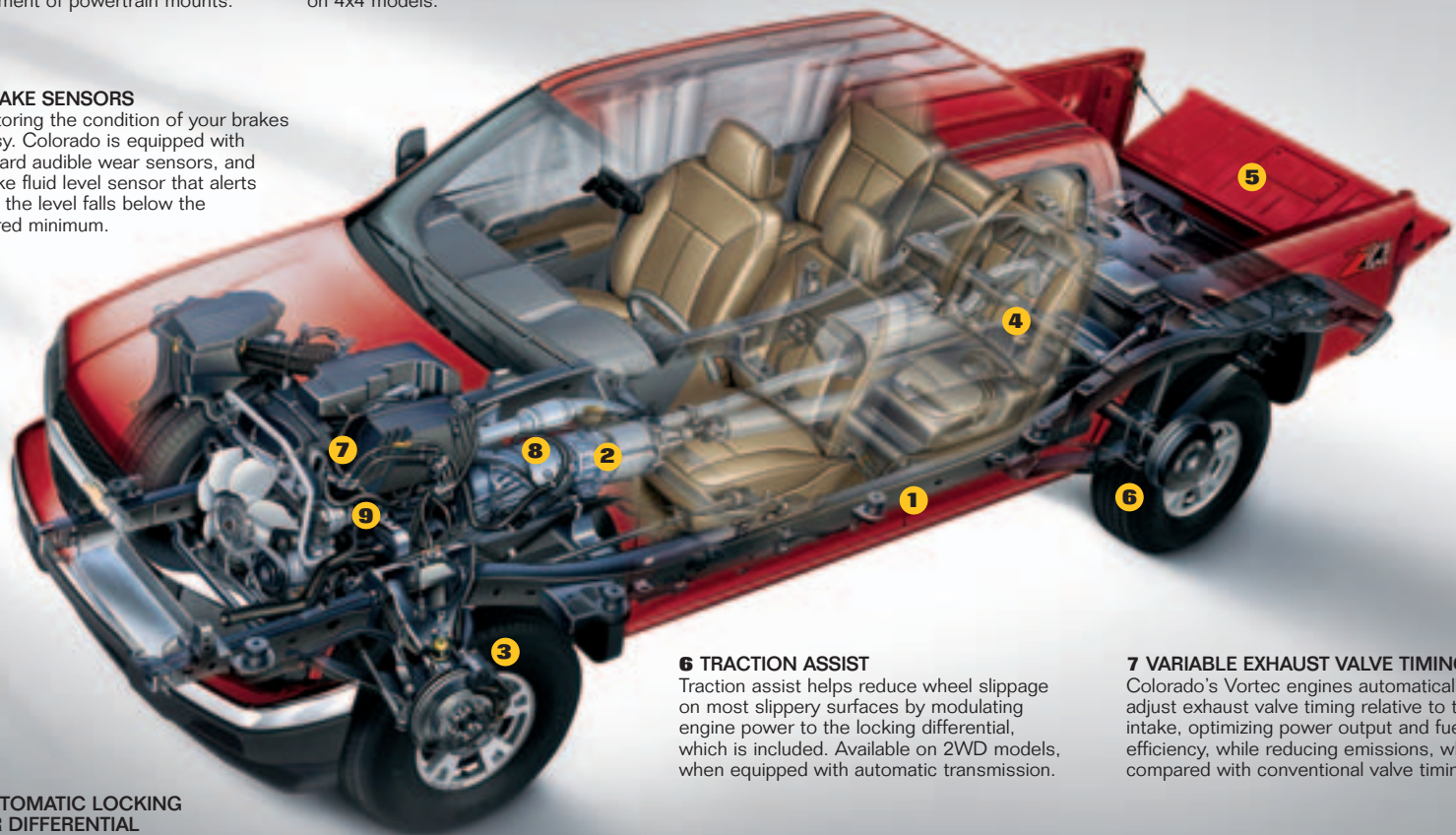
The shift-on-the-fly, two-speed, part-time Insta-Trac transfer case is standard on all 4x4 models. It allows you to shift from 2HI to 4HI and back at the touch of a button conveniently located on the instrument panel. It includes a Neutral position to permit flat towing. Standard on 4x4 models.

5 TWO-POSITION LOCKING TAILGATE

Colorado's lockable tailgate can be secured at a 55° angle, making it level with the top of the rear wheelhouses. This enables the box to haul 4'x8' sheets of building material.

THE TOTAL PACKAGE.

Each Colorado is purpose-built for the way you use it. All cab configurations come with a choice of one of three different suspension packages: the Z85 Standard, the lowered ZQ8 Sport, or the Z71 Off-Road. Each package features specific components and ground clearances. So you don't have to compromise when you choose Colorado, you get the total package.



6 TRACTION ASSIST

Traction assist helps reduce wheel slippage on most slippery surfaces by modulating engine power to the locking differential, which is included. Available on 2WD models, when equipped with automatic transmission.

8 FIVE-SPEED MANUAL TRANSMISSION

Colorado's five-speed manual transmission incorporates triple-cone synchronizers, which contribute to the transmission's precise shifting and impressive durability. The five-speed manual gearbox is standard on all Regular and Extended Cab models, as well as on Crew Cab models with Z85 Standard suspension.

7 VARIABLE EXHAUST VALVE TIMING

Colorado's Vortec engines automatically adjust exhaust valve timing relative to the intake, optimizing power output and fuel efficiency, while reducing emissions, when compared with conventional valve timing.

9 BROAD TORQUE CURVE

A broad, flat torque curve makes an engine responsive, whether it is operating at low or high rpms. The Vortec 3500 I-5 delivers 90 percent of peak torque from 1600 to 5600 rpm, while the Vortec 2800 I-4 delivers 90 percent of peak torque from 2000 to 5600 rpm.

COLORADO

SAFETY AND SECURITY



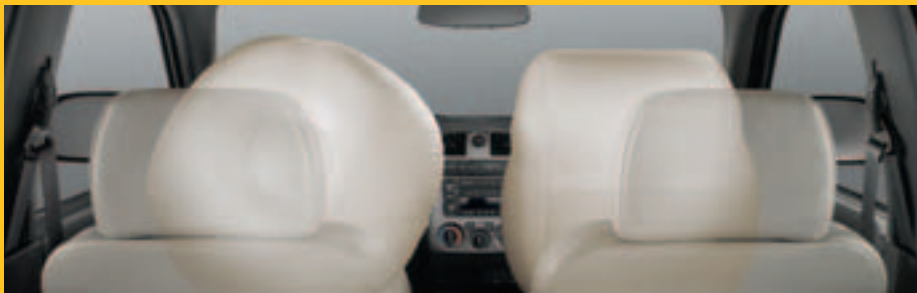
PUTTING YOU FIRST.

Of course, nothing takes priority over safety. But with Colorado, safety drives the engineering process. And the results speak for themselves: Colorado's intelligent air bag system* includes a Passenger Sensing System and available head curtain side-impact air bags.

1. With Colorado's intelligent air bag system,* if an air bag is deployed, the courtesy lights are turned on, and if you have power door locks, they are automatically unlocked after a brief delay to facilitate an easier rescue.
2. Further enhancing your peace of mind is the availability of driver, front-passenger and rear-seat outboard passenger head curtain air bags* that enhance side-impact protection.
3. The frontal air bags include a Passenger Sensing System that automatically disables the air bag if the passenger seat is empty or if it contains a child seat or a small occupant.

*A NOTE ON CHILD SAFETY: Always use safety belts and proper child restraints, even with air bags. Even with the Passenger Sensing System, children are safer when properly secured in a rear seat. Never place a rear-facing infant restraint in the front seat of any vehicle equipped with an active frontal air bag. Refer to the vehicle Owner's Manual and child safety seat instructions for more information.

SAFETY AND SECURITY/
ONSTAR/ACCESSORIES



Chevrolet is known for building vehicles that deliver excellent value and dependability. One important aspect of Chevrolet value is represented by the advanced safety, security, and convenience of OnStar.* OnStar uses advanced communications technology to enhance your peace of mind whenever you're in your Chevrolet. All it takes is a single push of the blue OnStar button usually located on the interior rear-view mirror, in the overhead console, or near the radio display – the button connects you with one of our specially trained OnStar Advisors. They are standing by, ready to provide support 24 hours a day, 365 days a year.

What can OnStar Advisors do for you? They can provide a wealth of information and perform a variety of services, including a remote diagnostic check of your vehicle's engine and electrical components. In an emergency, an Advisor will attempt to locate your vehicle, find out what assistance you need, and notify nearby emergency service providers. And if air bags are deployed in your vehicle, an Advisor will contact you to determine if you are in need of assistance.

Another convenient feature is OnStar Hands-Free Calling, a hands-free, voice-activated wireless technology integrated into your vehicle. It's there in case your hand-held phone is lost, forgotten or has a low battery. Even better, there are no additional monthly fees, or additional long distance and roaming charges. And as a new customer, you will receive 30 complimentary minutes good for two months after activation.

Now you can enjoy the peace of mind that comes with knowing you're doing all you can to help keep you, your family, and your vehicle safe. Just ask the almost 150,000 people who have become OnStar subscribers in Canada. How hard does OnStar work for you? The facts speak for themselves: every month in Canada OnStar Advisors handle an average of 9100 routing calls, 2500 emergency calls, 2600 door unlocks, and 625 Roadside Assistance dispatches.

OnStar offers two different service plans, allowing you to select the services that are most convenient for you. The Safe & Sound Plan is available the first year on Colorado LT models. In addition, the available Directions & Connections Plan offers all of the safety and security services included in the Safe & Sound Plan, plus you'll have access to driving directions and information and convenience services and RideAssist. See your dealer for more information on plans and services.

*OnStar services require vehicle electrical system (including battery), wireless service, and GPS satellite signals to be available and operating for features to function properly. Not all OnStar features are available on all vehicles. OnStar Hands-Free Calling requires a Hands-Free Calling enabled vehicle, existing OnStar service contract, and prepaid calling minutes, and is not available in Alaska and some other markets. Calls may be made to the U.S. and Canada only. OnStar voice recognition system may not work with some voices. OnStar acts as a link to existing emergency service providers. Subscription Service Agreement required. Due to the transition of the wireless industry from analogue to digital technology, as of January 1, 2008, OnStar plans to offer service only through equipment that operates on the digital network, which may require the purchase of a system upgrade for eligible vehicles. Call 1.888.4.ONSTAR (1.888.466.7827), TTY 1.877.248.2080 or visit onstar.ca for OnStar's Terms & Conditions, Privacy Policy, and system limitations and details.

COLORADO

ACCESSORIES

IT'S NOT JUST A COLORADO. IT'S YOUR COLORADO.

Colorado is built to reflect who you are. But don't stop there. You can transform your Colorado into a personalized expression of your style and priorities – with GM Accessories. They are the only accessories that are integrated into the process of designing your vehicle, ensuring excellent fit, finish and functionality. And only GM Accessories are backed by GM's New Vehicle Limited Warranty.* They can also be included in your new-vehicle lease or finance agreement through GMAC. Ask your dealer for a complete list of the GM Accessories available for Colorado, or visit gmcanada.com

*Whichever comes first, when permanently installed by the dealer at the time you purchase or lease your new vehicle.

GM ACCESSORIES AVAILABLE FOR COLORADO INCLUDE:

- Bedliner
- Under-seat storage
- Custom carpet floor mats
- Tonneau covers
- Bedrail protectors.



Canada

Accessories



COLORADO STANDARD & OPTIONAL FEATURES

Note: Crew Cabs available only in LT trim.

	Z85 LS/LT	Z71 LS/LT	ZQ8 LS/LT
SAFETY AND SECURITY			
Air bags – driver and front-passenger, frontal with Passenger Sensing System	S/S	S/S	S/S
Air bags – driver, front-passenger and rear-seat outboard passengers, roof-mounted head curtain side-impact	O/O	O/O	O/O
Door locks – rear door, child-security (Crew Cab)	–/S	–/S	–/S
Headlights – with automatic light control	S/S	S/S	S/S
Keyless entry system – remote (std. on Crew Cab)	–/O	–/O	–/O
OnStar In-Vehicle Communications and Assistance Service – includes one year of the Safe & Sound Plan and auto-dimming electrochromic interior rear-view mirror	–/O	–/O	–/O
Safety restraints – LATCH (Lower Anchors and top Tethers for Children)	S/S	S/S	S/S
Theft-deterrent system – PASSLock	S/S	S/S	S/S
Theft-deterrent system – content alarm, audible/visible (std. on Crew Cab)	–/O	–/O	–/O
Traction assist – electronic, includes locking rear differential (2WD models) [†]	O/O	S/S	O/O
MECHANICAL			
Battery – with run-down protection	S/S	S/S	S/S
Brakes – front disc/rear drum with 4-wheel anti-lock braking system (ABS)	S/S	S/S	S/S
Engine – Vortec 2800 in-line 4-cylinder Horsepower – 175 @ 5600 rpm, Torque – 185 lb.-ft. @ 2800 rpm	S/S	S/S	S/S
Engine – Vortec 3500 in-line 5-cylinder Horsepower – 220 @ 5600 rpm, Torque – 225 lb.-ft. @ 2800 rpm – Reg. and Ext. Cab – Crew Cab	O/O –/O	O/O –/S	O/O –/S
Engine block heater	S/S	S/S	S/S
Locking differential – rear [†] – Reg. and Ext. Cab – Crew Cab	O/O –/O	S/S ^{††} –/S	O/O –/O
Steering – power, rack-and-pinion	S/S	S/S	S/S
Suspension, Z85 Standard – includes independent front coil springs on 2WD models and torsion bar front suspension on 4x4 models. Both feature a 28 mm front stabilizer bar, rubber jounce bumpers and twin tube shock absorbers	S/S	–/–	–/–
Suspension, Z71 Off-Road – includes torsion bar front suspension on both 2WD and 4x4 models, 28 mm front stabilizer bar, urethane jounce bumpers and monotube shock absorbers. Additional 25 mm ride height over Z85 Standard suspension for improved ground clearance	–/–	S/S	–/–
Suspension, ZQ8 Sport – includes independent front coil springs, 28 mm front stabilizer bar, 22 mm rear stabilizer bar, special jounce bumpers and monotube shock absorbers. Sport ride with 50 mm lower ride height than Z85 Standard suspension for improved road handling (2WD only)	–/–	–/–	S/S
Suspension – rear, two-stage multi-leaf springs and solid live axle	S/S	S/S	S/S
Transmission – 5-speed manual with overdrive – Reg. and Ext. Cab – Crew Cab	S/S –/S	S/S –/–	S/S –/–
Transmission – 4-speed automatic with overdrive – Reg. and Ext. Cab – Crew Cab	O/O –/O	O/O –/S	O/O –/S
Transfer case – 2-speed, part-time Insta-Trac, with dash-mounted electronic controls (4x4 models)	S/S	S/S	–/–
Trailer Special Equipment Package – hitch receiver and wiring harness	O/O	O/O	O/O

[†]Requires automatic transmission.

^{††}4x4 models.

EXTERIOR

Bed extender – brushed aluminum*	O/O	O/O	O/O
Bed rail protectors – moulded (NA with bed rails or tonneau cover)*	O/O	O/O	–/–
Bumpers – front and rear, chrome with rear step pad	S/S	S/S	–/–
Bumpers – front and rear, colour-keyed with rear step pad	–/–	–/–	S/S
Colour-keyed Appearance Package – includes grille surround and centre bar, front and rear bumpers, front fascia and wheel flares on 4x4 models. Also includes fog lights and leather-wrapped steering wheel	O/O	–/–	–/–
Fog lights – front, halogen	O/O	S/S	S/S
Glass – Solar-Ray, tinted	S/S	S/S	S/S
Glass – deep-tinted, all windows behind front doors	O/S	O/S	O/S

EXTERIOR (continued)

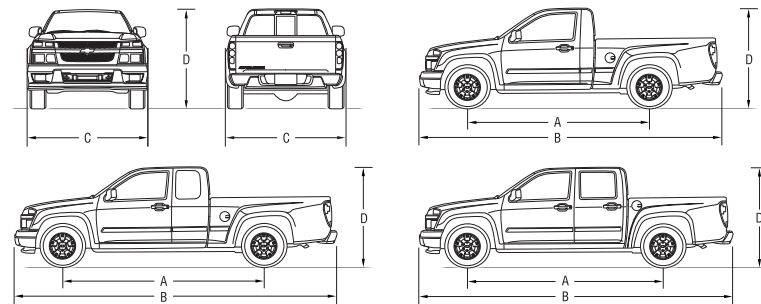
	Z85 LS/LT	Z71 LS/LT	ZQ8 LS/LT
Grille – dark smoke gray surround and inner mesh with chrome centre bar	S/–	S/–	–/–
Grille – colour-keyed surround with dark smoke gray inner mesh and chrome centre bar	–/S	–/S	–/–
Grille – colour-keyed surround and centre bar with dark smoke gray inner mesh	–/–	–/–	S/S
Hood protector – moulded plastic (available in smoke gray, white, red, blue, silver)*	O/O	O/O	O/O
Mirrors – manual folding and adjustable (Reg. and Ext. Cabs)	S/S	S/S	S/S
Mirrors – manual folding, power remote control (Crew Cabs)	–/S	–/S	–/S
Mouldings – bodyside, dark smoke gray	O/O	O/O	–/–
Pickup box – Fleetside, double wall welded steel with 8 cargo tie-downs	S/S	S/S	S/S
Side steps – tubular, gray steel (4x4)*	O/O	–/–	–/–
Side steps – tubular, chrome*	–/–	O/O	–/–
Skid Plate Package – includes transfer case skid shield and a composite front underbody splash shield from behind the front bumper to the first crossmember (4x4 models)	–/O	S/S	–/–
Spare tire – winch-mounted under rear frame-mounted on steel wheel	S/S	S/S	S/S
Splash guards – moulded, dark smoke gray*	O/O	S/S	O/O
Sport tent*	O/O	O/O	O/O
Sport tent air mattress*	O/O	O/O	O/O
Sunroof – power, tilt and slide	–/O	–/O	–/O
Tailgate – 2-position, locking	S/S	S/S	S/S
Tailgate edge protector – moulded*	O/O	O/O	–/–
Tires – P205/75R15 all-season (2WD Reg. and Ext. Cabs)	S/–	–/–	–/–
Tires – P225/75R15 all-season (2WD)	O/S	–/–	–/–
Tires – P235/75R15 all-season (4x4)	S/S	–/–	–/–
Tires – P265/75R15 all-season	–/–	S/S	–/–
Tires – P235/50R17 all-season	–/–	–/–	S/S
Tonneau cover – hard, folding (NA with bed rail protectors)*	O/O	O/O	O/O
Tonneau cover – soft (NA with bed rail protectors)*	O/O	O/O	O/O
Tow hooks – 2, front (4x4 only)	O/O	S/S	–/–
Ventvisors – moulded plastic, smoke*	O/O	O/O	O/O
Wheels – 15" x 6" LS steel (1)**	S/–	–/–	–/–
Wheels – 15" x 6.5" LT aluminum (3)**	O/S	–/–	–/–
Wheels – 15" x 7" Z71 aluminum (4)**	–/–	S/S	–/–
Wheels – 17" x 8" aluminum (2)**	–/–	–/–	S/S
Wheel flares – colour-keyed	–/–	–/–	S/S
Wheel flares – dark smoke gray, large	–/–	S/S	–/–
Wheel flares – colour-keyed, large	–/–	O/O	–/–
Window – rear, sliding	O/O	O/O	O/O
Windshield wipers – 2-speed with variable delay (intermittent)	S/S	S/S	S/S

*Dealer installed accessory. **Wheels shown on page 22.

INTERIOR

Accents – titanium coloured air outlets, centre stack, door handle bezels and instrument cluster bezels	–/S	–/S	–/S
Air conditioning – manual	O/S	O/S	O/S
Assist handles – above all outboard seats	–/S	–/S	–/S
Console – front centre floor, includes centre storage tray, dual cupholders and rear-hinged storage compartment (Crew Cab)	–/S	–/S	–/S
Comfort Convenience Package – includes tilt adjustable steering column and cruise control	S/S	S/S	S/S
Floor covering – vinyl (Reg. Cab)	S/–	S/–	S/–
Floor covering – colour-keyed carpet with rubber floor mats – Reg. Cab – Ext. and Crew Cab	O/S S/S	O/S S/S	O/S S/S
Instrumentation – analogue (includes speedometer, tachometer, odometer, trip odometer, engine coolant temperature and fuel level)	S/S	S/S	S/S
Lights – include side-entry illumination and exterior cargo	S/S	S/S	S/S
Mirror – day/night adjustable with door-activated dual reading lights	S/S	S/S	S/S
Mirror – electrochromic auto-dimming with dual reading lights, compass and exterior temperature display	–/O	–/O	–/O

DIMENSIONS



	Z85 LS/LT	Z71 LS/LT	ZQ8 LS/LT
INTERIOR (continued)			
Power Convenience Package – includes power windows, exterior rear-view mirrors, remote keyless entry and programmable power door locks and content theft alarm			
– Reg. and Ext. Cab	–/0	–/0	–/0
– Crew Cab	–/S	–/S	–/S
Power outlets – 2 auxiliary	S/S	S/S	S/S
Steering wheel – 4-spoke	S/S	–/–	–/–
Steering wheel – leather-wrapped	–/–	S/S	S/S
Sunshades – LH and RH padded with passenger-side vanity mirror	S/S	S/S	S/S

SEATS

	Z85 LS/LT	Z71 LS/LT	ZQ8 LS/LT
Front 60/40 cloth divided bench , outboard head restraints and dual cupholders (Reg. and Ext. Cab)	S/–	S/–	S/–
Front reclining 60/40 Deluxe cloth divided bench , outboard head restraints, armrest with storage and dual cupholders			
– Reg. and Ext. Cab	–/S	–/S	–/S
– Crew Cab (deletes centre floor console)	–/0	–/0	–/–
Front reclining Deluxe cloth bucket seats , centre floor console with storage, armrest and dual cupholders			
– Reg. and Ext. Cab	–/0	–/0	–/0
– Crew Cab	–/S	–/S	–/S
Front reclining Deluxe leather-appointed bucket seats , heated, 8-way power driver adjuster and 6-way power front-passenger adjuster and centre floor console with storage, armrest and dual cupholders (Ext. and Crew Cab)	–/0	–/0	–/0
Rear flat-folding jump seats , forward-facing with under-seat storage compartment (Ext. Cab)	S/S	S/S	S/S
Rear seat delete (Ext. Cab)	0/–	0/–	0/–
Rear 60/40 divided back , flat-folding bench seat with fold-down centre armrest (Crew Cab)	–/S	–/S	–/S

SOUND SYSTEMS

	Z85 LS/LT	Z71 LS/LT	ZQ8 LS/LT
Electronically tuned AM/FM stereo with seek/scan and digital clock	S/–	S/–	S/–
2 speakers in Reg. Cab/4 speakers in Ext. and Crew Cabs	S/–	S/–	S/–
4 speakers in Reg. Cab/6 speakers in Ext. and Crew Cabs	–/S	–/S	–/S
Electronically tuned AM/FM stereo with CD player with MP3 playback, seek/scan, Radio Data System (RDS), auto tone control, TheftLock, speed-compensated volume control and digital clock	0/S	0/S	0/S
Electronically tuned AM/FM stereo with 6-disc CD changer, seek/scan, Radio Data System (RDS), auto tone control, speed-compensated volume control and digital clock	–/0	–/0	–/0

EXTREME PACKAGE

Includes ZQ8 Sport Suspension (2WD only), colour-keyed body components, 18" x 8" XTREME aluminum wheels (6)**, rear tailgate spoiler, front fascia spoiler, bodyside ground effects, specific rear bumper fascia with step pad, gauge cluster accents, chrome composite headlight and parking/signal light assemblies, mesh grille with chrome accents, XTREME badging on front doors. Available in Superior Blue, Black, Yellow (extra cost), Summit White or Victory Red.

- Available Stripe Accents – includes hood and front door decals
- Available ultra bright 18" x 8" aluminum wheels (5)**

**Wheels shown on page 22.

S – Standard. 0 – Optional individually or in combination with other optional equipment.
Note: The trim features indicated reflect only a portion of the total content of each trim level.
See your Sales Consultant for complete listings, current availability and compatibility.

A WORD ABOUT THIS BROCHURE

Some of the equipment shown or described throughout this brochure may be available at extra cost. We have tried to make this brochure comprehensive and factual. We reserve the right, however, to make changes at any time, without notice, in prices, colours, materials, equipment, specifications, models and availability. Specifications, dimensions, measurements, ratings and other numbers in this brochure and other printed materials provided at the dealership or affixed to vehicles are approximates based upon design and engineering drawings and prototypes and laboratory tests. Your vehicle may differ due to variations in manufacture and equipment. Since some information may have been adapted since the time of the printing, please check with your Chevrolet dealer for complete details. General Motors of Canada Limited reserves the right to lengthen or shorten the model year for any product, for any reason, or to start and end model years at different times.

PRIVACY STATEMENT

At General Motors of Canada Limited ("GM Canada") we respect your privacy and value our relationship with you. Your personal information will be protected, will never be sold, and will be used only by GM Canada, our affiliates, dealers/retailers, and service suppliers (only to provide services). If you wish to be removed from GM Canada marketing communications; would like to limit only certain marketing communications from us; would like a listing of our specific uses or further information about those with whom your information is shared; or for further information about our Privacy Policy and practices, please contact us at 1-800-GM-DRIVE (1-800-463-7483) or through our Web site at gmcanada.com

A WORD ABOUT ASSEMBLY

Chevrolet Trucks are equipped with engines and components produced and assembled by different operating units of General Motors, its subsidiaries and suppliers and these engines and components may change or be obtained from different sources from time to time. All such engines and components are approved for use in Chevrolet Trucks.

EXTERIOR, mm (in.)	REGULAR CAB	EXTENDED CAB	CREW CAB
Wheelbase (A)	2827 (111.2)	3200 (126.0)	3200 (126.0)
Length (B)	4897 (192.8)	5260 (207.1)	5260 (207.1)
Width (C) – Z85 2WD	1717 (67.6)	1717 (67.6)	1717 (67.6)
– Z85 4x4	1742 (68.6)	1742 (68.6)	1742 (68.6)
Height (D)* – Z85 2WD	1648 (64.9)	1648 (64.9)	1656 (65.2)
– Z85 4x4	1717 (67.6)	1717 (67.6)	1725 (67.9)

INTERIOR, mm (in.) front/rear

	Z85 LS/LT	Z71 LS/LT	ZQ8 LS/LT
Headroom	1006/– (39.6/–)	1006/963 (39.6/37.9)	1006/973 (39.6/38.3)
Legroom	1072/– (42.2/–)	1072/587 (42.2/23.1)	1072/884 (42.2/34.8)
Shoulder room	1450/– (57.1/–)	1450/1453 (57.1/57.2)	1450/1450 (57.1/57.1)
Hip room	1354/– (53.3/–)	1354/1463 (53.3/57.6)	1354/1344 (53.3/52.9)

CARGO BOX DIMENSIONS, mm (in.)

	Z85 LS/LT	Z71 LS/LT	ZQ8 LS/LT
Length	1849 (72.8)	1849 (72.8)	1552 (61.1)
Inside width @ wheelhousing	1082 (42.6)	1082 (42.6)	1082 (42.6)
Inside height	472 (18.6)	472 (18.6)	472 (18.6)

CAPACITIES

	Z85 LS/LT	Z71 LS/LT	ZQ8 LS/LT
GVWR, max. kg (lb.)	2336 (5150)	2404 (5300)	2404 (5300)
Payload, max. kg (lb.)*	702 (1547)	695 (1532)	607 (1338)
Towing, max. kg (lb.)**	1814 (4000)	1814 (4000)	1814 (4000)
Fuel, L (imp. gal.)	72 (15.8)	72 (15.8)	72 (15.8)

* Add 25 mm (1.0 in.) in height to Z71 models. Subtract 50 mm (2.0 in.) in height for ZQ8 models.

** Payload includes passengers, equipment and cargo. Payloads are approximate and will change with the addition of optional or aftermarket equipment. Consult your dealer or equipment supplier for details.

** Trailer ratings are calculated using an automatic transmission, Vortec 3500 engine and assuming only the driver is in the tow vehicle. Trailer Weight (also called Trailer Towing Capacity) is the weight of a trailer, its load or contents plus any other weight added to the tow vehicle. Ratings shown are for ball hitch applications. For details, ask your Sales Consultant for a copy of the Trailing with Chevrolet Trucks brochure. Many trailer towing applications require additional optional equipment.

Certain equipment ordered may be unavailable at the time of assembly and we suggest that you verify that your vehicle includes the equipment you ordered, or if there are changes, that they are acceptable to you.

TRADEMARKS

The marks appearing in this Chevrolet Colorado brochure including, but not limited to: General Motors, GM, the GM Canada emblem, the GM Canada Web site address, the GM Accessories logo, Chevrolet, Chevy, the Chevrolet emblem, Avalanche, Colorado, Equinox, Express, Silverado, SSR, Suburban, Tahoe, TrailBlazer and their respective logos, emblems, slogans and vehicle model names and body designs; and other marks such as DEX-COOL, PASSLock, SMARTLEASE, Solar-Ray, Vortec and TOTAL Warranty are trademarks of General Motors Corporation and/or General Motors of Canada Limited, its subsidiaries, affiliates or licensors.

GMAC is a registered trademark of the General Motors Acceptance Corporation.

OnStar, the OnStar logo and the OnStar brand are registered trademarks of the OnStar Corporation.

TheftLock is a registered trademark of Delphi Automotive Systems.

Radio Data System (RDS) is a registered trademark of the U.S. National Association of Broadcasters.

COPYRIGHT

©Copyright 2005 General Motors of Canada Limited. All Rights Reserved. All text, images, graphics, and other materials in this Chevrolet Colorado brochure are subject to the copyright and other intellectual property rights of General Motors Corporation and/or General Motors of Canada Limited. These materials may not be reproduced, distributed or modified without the express written permission of General Motors Corporation and/or General Motors of Canada Limited.

Printed in Canada, August 2005.

COLOURS. FABRICS. WHEELS.

Exterior Colours

59 Silver Birch Metallic

94 Dark Cherry Red Metallic

41 Black

85 Sunburst Orange Metallic



Exterior/Interior Colour Compatibility

Exterior	Interior		
	LT 31-Light Cashmere	LT 69-Very Dark Pewter	LS 92-Medium Dark Pewter
22 – Superior Blue Metallic	•	•	•
41 – Black	•	•	•
43 – Yellow [†]	•	•	•
46 – Blue Granite Metallic	•	•	•
50 – Summit White	•	•	•
59 – Silver Birch Metallic	•	•	•
74 – Victory Red	•	•	•
85 – Sunburst Orange Metallic	•	•	•
94 – Dark Cherry Red Metallic	•	•	•

[†]Premium colour – available at extra cost.

Note: Models with ZQ8 Sport suspension are available in Black, Yellow, Summit White or Victory Red.

Wheels

1. 15" x 6"
LS Steel
Wheel with Z85
Suspension

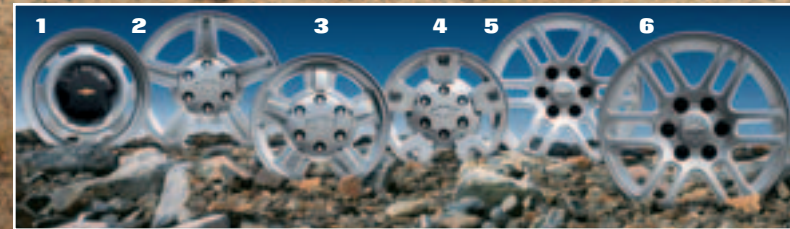
2. 17" x 8"
LS and LT Aluminum
Wheel with ZQ8 Sport
Suspension.

3. 15" x 6.5"
LT Aluminum Wheel
with Z85 Suspension.
Available on LS models.

4. 15" x 7"
LS and LT Aluminum
Wheel with Z71
Suspension.

5. 18" x 8"
Available XTREME
Package Ultra Bright
Aluminum Wheel.

6. 18" x 8"
Standard XTREME
Package Aluminum
Wheel.



COMMITMENT:

Rock solid trucks. Backed by a rock-solid commitment. There is nothing halfway about Chevrolet's approach to building strong and durable trucks. That can also be said of the way Chevrolet backs each and every truck that bears its name. A comprehensive series of support programs makes it easier to purchase or lease a Chevy Truck and helps protect you and your vehicle down the road. A powerful example of the level of protection you can expect is the GM TOTAL™ Warranty. It is so thorough it covers everything from the roof right down to the tires. So when you drive off the lot of your Chevrolet dealership, you can do so with total confidence. Peace of mind is knowing that your vehicle is built for the long haul, and is backed by a comprehensive warranty.

THE GM TOTAL™ WARRANTY:[†]

The GM TOTAL™ Warranty is your promise of total warranty protection. It covers every new Chevy Truck for 3 years or 60,000 km*. Complete vehicle repairs are covered,** including parts and labour, with no deductible. The warranty includes:

- 3-year/60,000 km* complete vehicle repair coverage
- 6-year/160,000 km* corrosion perforation coverage
- 8-year/130,000 km* coverage on catalytic converters and powertrain control modules (PCMs).

*Whichever comes first. **To correct any defects in material or workmanship occurring during the warranty period. Regular maintenance is not included, nor is excessive wear and tear caused by reckless or negligent driving.

[†]Conditions and limitations apply.

OTHER OWNERSHIP PRIVILEGES AND PROGRAMS:[†]

- **Roadside Assistance** – 24/7 service via toll-free number during your warranty period, anywhere in Canada or the United States
- **Courtesy Transportation** – may be offered during the warranty period
- **GM Protection Plan (GMPP)** – the only extended services contract backed by the resources and commitment of General Motors, GMPP may be purchased at the time of your sale or lease, or subsequently
- **GM Mobility Program** – you may be eligible for reimbursement of up to \$1000 (taxes included) for adaptive equipment for your GM vehicle

- **GM Accessories** – personalize your vehicle with GM Accessories, specifically engineered for your new GM vehicle
- **GM Goodwrench Service** – with GM-certified technicians and GM-approved parts, nobody knows your GM vehicle better.

[†]Conditions and limitations apply.

TO HELP YOU PURCHASE OR LEASE A NEW VEHICLE:

- **GMAC Financing** – on the spot financing at your GM dealership^{††}
- **GMAC SmartLEASE** – a smart alternative to traditional financing^{††}
- **GM Student Bonus Program** – GM will cover the first two purchase finance or lease payments and the lease security deposit on eligible new GM vehicles for students and recent graduates of high school, college or university[†]
- **The GM Card** – eligible cardholders may be able to redeem up to \$3500 on GM Card® Earnings toward the total purchase price or lease down payment on selected vehicles. For more information on The GM Card please call 1-800-461-3279.[†]

[†]Conditions and limitations apply. ^{††}Subject to eligibility.

INFORMATION RESOURCES:

You can find more information about these programs from your GM dealer, or at these information centres:

- The GM Web site at gmcanada.com
- The GM Customer Communication Marketing Centre at 1-800-GM-DRIVE (1-800-463-7483 or 1-800-263-3830 for TDD users) – for information about any GM product or service, including The GM Card and the GM Mobility Program
- For information about GMAC visit gmcanada.com or call 1-800-616-4622.



74 Victory Red

43 Yellow†

46 Blue Granite Metallic

50 Summit White

22 Superior Blue Metallic

Colours may not be exactly as illustrated due to restrictions of the printing process. Please see your Sales Consultant for specific colour and model availability and compatibility.

Interior Fabrics



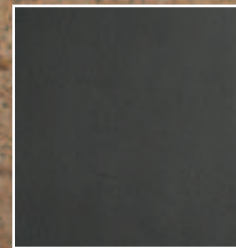
LS Base Cloth 60/40 Split-Bench Front Seat
Included in all LS models. Shown in 92D-Medium Dark Pewter.



Deluxe Cloth 60/40 Split-Bench Front Seat
Included in all LT models. Shown in 31H-Light Cashmere. Also available in 69H-Very Dark Pewter.



Front Bucket Seats with Deluxe Leather-Appointed Seating
Available in Extended Cab and Crew Cab LT models only. Shown in 312-Light Cashmere. Available in 692-Very Dark Pewter (1).



1. 692-Very Dark Pewter Deluxe Leather



SSR

A STORY ONLY GENERAL MOTORS CAN TELL.

General Motors' commitment to setting the highest standards in quality, safety, innovation, and fuel efficiency are matched by an equally strong commitment to the community.

DID YOU KNOW?

QUALITY: GM plants swept the J.D. Power Initial Quality Study^{SM*} rankings for North and South America: Gold and Silver Plant Quality Awards for the Canadian Oshawa #2 and #1 car plants, in addition to the Bronze Plant Quality Award for the Hamtramck, Michigan plant.

SAFETY: General Motors is the only automotive manufacturer committed to offering a full range of cars, trucks, and SUVs that provide safety protection before, during and after a collision. GM vehicles are equipped with a range of features and technologies that help drivers avoid collisions, reduce the risk of injury should a collision prove unavoidable, and help you get the assistance you need after a collision.

INNOVATION: GM is at the forefront of automotive technology with breakthrough features such as OnStar and XM Satellite Radio.

FUEL EFFICIENCY: GM offers more cars than any other automaker in Canada that get better than 7.0 L/100 km in highway driving. GM has also won more EnerGuide fuel-efficiency awards than any other car company.

GM IS COMMITTED TO CANADA.

INVESTMENT: GM invests more in Canada than any other car company: The \$2.5 billion Beacon Project represents the largest automotive investment in Canadian history.

EMPLOYMENT: GM directly employs over 20,000 people in Canada – more than any other car company.

DESIGN: GM is the only car company that designs, engineers and builds cars in Canada.

GM IS BEHIND YOU AND YOUR VEHICLE.

GM is equally comprehensive in the way it backs its Chevrolet vehicles. All Chevrolet Truck models include:

- **3-year/60,000 km** complete vehicle repair coverage**
- **6-year/160,000 km** corrosion perforation coverage**
- **8-year/130,000 km** coverage on catalytic converters and powertrain control modules (PCMs)**
- **3-year/60,000 km** 24-hour Roadside Assistance.**

*General Motors Corporation – Oshawa #2 (Ontario – Car) was the highest ranked plant, Oshawa #1 (Ontario) was the second ranked plant and Hamtramck, MI was the third ranked plant in North/South America among plants producing vehicles for the U.S. market in J.D. Power and Associates 2005 U.S. Initial Quality StudySM. Study based on a total of 62,251 U.S. consumer responses indicating owner reported problems during the first 90 days of ownership. www.jdpower.com

**Whichever comes first.



COLORADO



SILVERADO



AVALANCHE



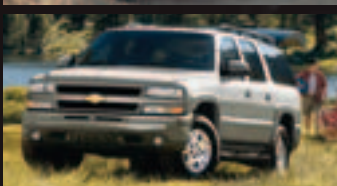
EQUINOX



TRAILBLAZER



TAHOE



SUBURBAN



EXPRESS



Canada

CHEVROLET PONTIAC BUICK GMC CADILLAC SATURN SAAB HUMMER

CHEVROLET FOR ALL LIFE'S ROADS

gmcanada.com

