

2013

TAHOE SUBURBAN





Seven billion people. One road.

Movement is the universal language of personal freedom. Our founder Louis Chevrolet spoke it fluently. As a Swiss immigrant, he came to America with a dream of racing cars. He wished for everyone – not just the rich or entitled – to experience the exhilaration he felt behind the wheel.

In 1911, he began building his first car. One hundred years later, a new Chevrolet is sold every 6.6 seconds. That amounts to 4.76 million vehicles in more than 140 countries – more than Louis Chevrolet could ever have imagined.

The depth of our heritage and passion is evident in everything we do here at Chevrolet. It's ingrained in the bold design, spirited performance, proven durability and exceptional value our drivers enjoy. It empowers us to be leaders in innovation. And it inspires us to continuously raise the bar – today, tomorrow and into what promises to be a bright future.

Currently, we are pioneering new propulsion technologies to meet the demanding energy and environmental needs of a global automotive brand. We're also employing alternative energy sources and investing in fuel-saving technologies to help reduce our carbon footprint with the goal of reducing 8 million metric tons of carbon dioxide emissions over the next few years.

Our global reach is expanding, yet our mission remains the same. We want every customer to feel like family – no matter where you are in the world. And no matter where you're going, we want you to enjoy the ride in a Chevrolet.

From the vision of one to the journey of many, Chevy Runs Deep.



Tahoe LTZ 4WD shown in
White Diamond Tricoat (extra-cost color)
with available features.

IMPRESSIVE BY DESIGN



THE POWER TO GO FROM CONCRETE JUNGLES TO RUGGED LANDSCAPES

Whether it's the weekday or the weekend, you need a lot of power to handle the demands of the road.

From towing to hauling to driving kids around, Chevy Tahoe is the full-size SUV that's big on capability and comfort. With a Vortec™ 5.3L V8 that offers fuel economy its competitors can't beat,¹ the choice of 2WD or 4WD, seating for up to nine in LS, accommodations that are upscale, and entertainment that's high-tech, Tahoe has everything you need to navigate Main Street or no street.

Tahoe LTZ 4WD shown in White Diamond Tricoat (extra-cost color) with available features and dealer-installed accessories. Available seating for eight.

¹ Based on GM Large SUV segment. EPA-estimated 15 MPG city/21 highway.

POWER UNLEASHED

GREAT POWER WITHOUT SACRIFICE

When you're looking for that go-to vehicle, you can't go wrong with the legendary capability of the Chevy Tahoe or Suburban. Both are equipped with advanced Active Fuel Management™ technology and Variable Valve Timing, delivering power when you need it and the ability to conserve fuel when your driving demands don't require it. For Tahoe that means fuel economy its competitors can't beat – 15 MPG city/21 highway!¹ And for Suburban 1/2-ton that means up to a 650-mile highway driving range on a single tank.² As you might expect, both SUVs also have the kind of horsepower, torque and towing numbers to tow snowmobiles, ATVs and boats.



VORTEC 5.3L V8

On Tahoe and Suburban 1/2-ton, the Vortec 5.3L V8 delivers an impressive 320 horsepower, while the Vortec 6.0L V8 on Suburban 3/4-ton generates 352 horsepower.



TRANSMISSION

For driving ease, a 6-speed automatic transmission with overdrive is standard on all Tahoe and Suburban models.



TORQUE

With 335 lb.-ft. of torque, Tahoe and Suburban 1/2-ton scream capability. So does Suburban 3/4-ton with 382 lb.-ft. of torque.



TOWING

Tahoe 2WD offers trailering capability of up to 8,500 lbs.³ and up to 8,200 lbs.³ on Tahoe 4WD. Suburban 1/2-ton delivers 8,100 lbs.³ of maximum trailering capability, while 3/4-ton 2WD delivers 9,600 lbs.³

¹ Based on GM Large SUV segment. EPA-estimated 15 MPG city/21 highway. ² Based on EPA-estimated 21 MPG highway and fuel tank capacity. Your range may be less. ³ Maximum trailer weight ratings are calculated assuming a base vehicle, except for any option(s) necessary to achieve the rating, plus driver. The weight of other optional equipment, passengers and cargo will reduce the maximum trailer weight your vehicle can tow. See your Chevy dealer for additional details.

Tahoe LTZ 4WD shown in White Diamond Tricoat (extra-cost color) with available features.



Tahoe LTZ 4WD interior shown in Light Cashmere-Color/Dark Cashmere-Color with available features.



Suburban LTZ 4WD interior shown in Light Cashmere-Color/Dark Cashmere-Color with available seating for eight.



MULTIPLE SEATING OPTIONS

With a variety of seating options available, Tahoe and Suburban can accommodate up to nine comfortably, depending on model.

POWER FLIP-AND-FOLD SEAT

Available second-row power-release flip-and-fold seats make entry and exit easy for passengers.

HEATED AND COOLED SEATS

Standard on LTZ, heated and cooled leather-appointed front seats keep you comfortable all year. Your passengers stay comfortable too, thanks to second-row heated seats.



CARGO CAPACITY

Tahoe offers up to 108.9 cu. ft.¹ of maximum cargo space, and Suburban gives you a best-in-class 137 cu. ft.¹ of maximum cargo space.

THE ROOM YOU NEED AND THE AMENITIES YOU WANT

No matter how long the drive, Tahoe and Suburban are all about transporting people comfortably. Depending on which model you choose, optional features include a power sunroof, rear DVD entertainment system, Universal Home Remote, power-remote liftgate and power-adjustable pedals. In addition, tri-zone manual (LS) or automatic (LT, LTZ) climate controls give driver, right-front passenger and rear passengers individual control over their settings. Chevy Tahoe and Suburban aren't just spacious, they're generous on comfort too.

¹ Cargo and load capacity limited by weight and distribution.

The image shows the interior of a car from a rear passenger perspective. A large screen is mounted on the ceiling, displaying a landscape with a beach and mountains. The driver is visible from the side, interacting with a navigation system on the dashboard. The text 'STAYING CONNECTED IS EASY' is overlaid in large white letters on the left side of the image.

**STAYING
CONNECTED
IS EASY**



7-INCH TOUCH-SCREEN NAVIGATION AND ENTERTAINMENT

Standard on LTZ and available on LT, this system offers up to 30 GB for you to store your favorite music, and Pause and Play that lets you pause a live radio broadcast.




REAR VISION CAMERA

Enjoy the convenience of an available integral rear vision camera that helps you see certain stationary objects located behind the vehicle when traveling in reverse at low speeds.




ONSTAR REMOTELINK

With OnStar,[®] standard for six months, you can download the RemoteLink™ mobile app¹ to your smartphone and remotely lock or unlock your doors or start your engine.² You can also view real-time vehicle diagnostics including fuel level, remaining oil life and more.



Bluetooth^{®3} hands-free calling for select phones



USB port⁴

TECHNOLOGY GOES ALONG FOR THE RIDE

Being out in the wild doesn't mean leaving creature comforts behind. You're connected and entertained with an available rear DVD entertainment system, voice recognition and a USB port⁴ for your iPod.⁵ Available SiriusXM NavTraffic⁶ offers real-time traffic updates that are displayed on the available navigation radio's 2-D or 3-D full-color map. Meanwhile, SiriusXM Satellite Radio⁶ (with 3-month trial) lets you enjoy commercial-free music channels, talk, news, comedy and family programming. OnStar⁷ with Automatic Crash Response has you covered, and in the event of a collision, an alert can be sent – even if you're unable to respond.

¹ Available on select iPhone[®], Android[™] and BlackBerry[®] devices. Services vary by phone, vehicle and conditions. Requires an active OnStar subscription. ² Requires available remote vehicle starter system. ³ Go to gm.com/bluetooth to find out which phones are compatible with the vehicle. ⁴ Not compatible with all devices. ⁵ iPod is a mobile digital device. iPod and iPhone are trademarks of Apple Inc., registered in the U.S. and other countries. ⁶ If you subscribe after your trial period, subscriptions are continuous until you call SiriusXM to cancel. See SiriusXM Customer Agreement for complete terms at siriusxm.com. Other fees and taxes will apply. All fees and programming subject to change. For more information about NavTraffic, visit siriusxm.com/navtraffic. XM satellite service is available only in the 48 contiguous United States and Washington, D.C. ⁷ Visit onstar.com for coverage map, details and system limitations. Services vary by model and conditions. OnStar acts as a link to existing emergency service providers.

THE LEGENDARY SUBURBAN



THE WORLD'S FIRST SUV IS STILL THE BEST SUV

Chevy Suburban continues to pave the way through its rich history into today's modern comforts. Suburban celebrates 78 years of moving kids and friends all around the country. More than seven decades of stowing gear and towing toys from sandy beaches to snowy mountaintops. As much as we'd like to keep it the same, we continue to innovate and update to make Suburban even better for the next generation. But that's what family tradition is about, isn't it?

Suburban LTZ shown in
Black with available features.

STILL RUNNING STRONG



Suburban LTZ 4WD shown in Black with available features.

A HISTORY OF MOVING FAMILIES AND MOUNTAINS OF GEAR

More than ever, Suburban has become what the modern family needs: a full-size SUV with strong performance, incredible towing and advanced technology. Whether you need to move quarter horses or tow a boat, Suburban 1/2-ton and 3/4-ton are built to pull. A heavy-duty boxed frame provides stiffness, the long wheelbase enhances the ride, and an integrated trailer brake controller helps keep even the heaviest trailers under control (available on 1/2-ton and standard on 3/4-ton). It all adds up to 8,100 lbs.¹ of maximum trailering on 1/2-ton 2WD, 8,000 lbs.¹ on 1/2-ton 4WD, and 9,600 lbs.¹ of maximum trailering power and best-in-class payload capacity on 3/4-ton 2WD models.



VORTEC 5.3L V8/VORTEC 6.0L V8

The Vortec 5.3L V8 on 1/2-ton offers 320 horsepower and 335 lb.-ft. of torque, while the 3/4-ton has the Vortec 6.0L generating 352 horses and 382 lb.-ft. of torque.

¹ Maximum trailer weight ratings are calculated assuming a base vehicle, except for any option(s) necessary to achieve the rating, plus driver. The weight of other optional equipment, passengers and cargo will reduce the maximum trailer weight your vehicle can tow. See your Chevy dealer for additional details.

THE OFF-ROAD WARRIOR



4-WHEEL DRIVE

When you're going off-road or driving in snow or mud, you can find the balance of capability and efficiency that's best for you with available 4WD.



SUSPENSION

The Z71 Off-Road Suspension Package has specially tuned springs and monotube shocks to help absorb the punishment from the pavement and off-road terrain.

DOMINATE THE TOUGHEST TERRAIN IN A Z71

There's a reason adventurous types favor Tahoe and Suburban. With legendary spaciousness, a stout frame, powerful engines, and available 4WD capability, they're the rugged and dependable way to move people, boats and gear.

Suburban Z71 shown in
Crystal Red Tintcoat (extra-cost color).



Z71 OFF-ROAD SUSPENSION PACKAGE

You can add to that sense of adventure with the Z71 Off-Road Suspension Package, available on Tahoe LT and Suburban LT 1/2-ton. Chrome grille inserts enhance the unique front fascia, along with aluminum wheels and off-road tires.



WAIT, THERE'S EVEN MORE

The Z71 Off-Road Suspension Package also includes tubular assist steps and recovery hooks. The Skid Plate Package features an aluminum front underbody shield to help keep the vehicle free of debris. An automatic locking rear differential provides traction on uneven terrain like mud or gravel.

Suburban Z71 shown
in Crystal Red Tintcoat
(extra-cost color).



332-HP 6.0L V8

With 332 horsepower, 367 lb.-ft. of torque and up to 6,200 lbs. of towing capability,¹ Tahoe Hybrid rises to every challenge.



REGENERATIVE BRAKING SYSTEM

It captures energy that would otherwise be expended by braking friction. By using one or both of the Electronic Variable Transmission's tractive motors as a generator, braking energy is converted to electrical energy and is stored in the battery for future use to propel the vehicle.



BEST-IN-CLASS FUEL ECONOMY²

It's a true hybrid with an EPA-estimated 20 MPG city/23 highway.

¹ Maximum trailer weight ratings are calculated assuming a base vehicle, except for any option(s) necessary to achieve the rating, plus driver. The weight of other optional equipment, passengers and cargo will reduce the maximum trailer weight your vehicle can tow. See your Chevy dealer for additional details. ² Based on GM Large SUV segment. ³ Available at participating dealers.

ONE POWERFUL HYBRID

THE ADVENTURE CONTINUES WITH AMERICA'S FIRST FULL-SIZE HYBRID SUV

Chevy Tahoe Hybrid³ is a true hybrid with an EPA-estimated 20 MPG city/23 highway, and offers significant fuel savings over non-hybrid competitors. Yet it still offers the kind of capability you'd expect from Tahoe: towing, hauling and driving kids around. The brain of Tahoe Hybrid is a control module – the hybrid operating system – that monitors the drive system hundreds of times a second. In stop-and-go conditions, the hybrid operating system employs gas or electric power – or a mixture of both – and can turn the gas engine off when traveling less than 30 mph. When you need to tow a heavy load, the transmission shifts to one of the fixed gears and uses the power of the V8.



Tahoe Hybrid shown in Silver Ice Metallic.

Suburban LT 3/4-ton shown
in Silver Ice Metallic.

PULLING FOR YOU



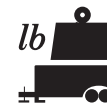
SUBURBAN GIVES YOU THE ABILITY TO TOW – AND GO

Suburban 3/4-ton, with its iconic rugged lines and solid bearing, has always been an unmistakable member of the Chevy family. With a long list of advanced safety and convenience features, it continues to maintain its reputation for spaciousness and legendary capability. So pack it up, load it in and get out there. With 8-passenger seating on LS and LT (nine available on LS), Driver Information Center, available Luxury Package, plus the latest technology to keep passengers connected and entertained, it gets the job done just the way you want.



VORTEC 6.0L V8

It pumps out 352 horsepower and a pavement-grabbing 382 lb.-ft. of torque.



TOWING

Suburban 3/4-ton has a towing capability of up to 9,600 lbs.¹ The trailer brake controller is fully integrated with the antilock braking system.



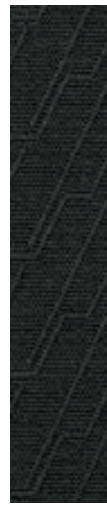
BOX FRAME

Suburban is built to pull, thanks to its heavy-duty fully boxed frame that provides stiffness.

¹ Maximum trailer weight ratings are calculated assuming a base vehicle, except for any option(s) necessary to achieve the rating, plus driver. The weight of other optional equipment, passengers and cargo will reduce the maximum trailer weight your vehicle can tow. See your Chevy dealer for additional details.



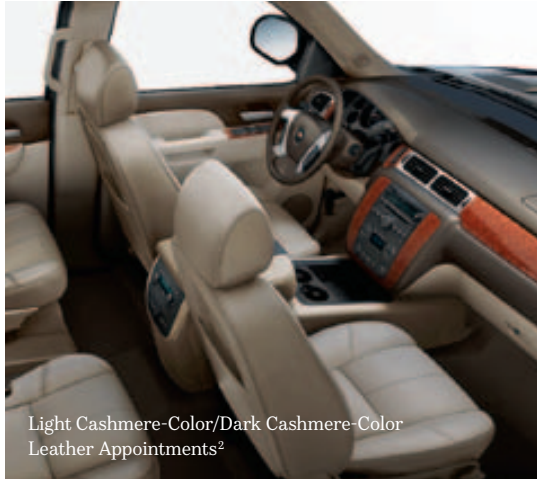
Light Cashmere-Color/Dark Cashmere-Color
Premium Cloth¹



Ebony
Premium Cloth¹



Light Titanium-Color/Dark Titanium-Color
Leather Appointments²



Light Cashmere-Color/Dark Cashmere-Color
Leather Appointments²



Ebony
Leather Appointments²



Light Titanium-Color/Dark Titanium-Color
Perforated Leather Appointments³



Light Cashmere-Color/Dark Cashmere-Color
Perforated Leather Appointments³



Ebony Perforated
Leather Appointments³

¹ Standard on LS. ² Standard on LT and Hybrid. ³ Standard on LTZ.



Black



Black Granite Metallic^{1,2}



Blue Ray Metallic^{1,3}



Concord Metallic^{1,2,4}



Crystal Red Tintcoat¹



Mocha Steel Metallic



Champagne Silver Metallic²



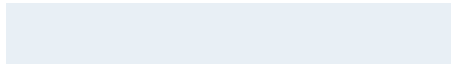
Silver Ice Metallic



White Diamond Tricoat^{1,2,5}



Summit White



17" 8-Lug Bright
Machined-Aluminum Wheel
(standard on Suburban 3/4-ton)



17" Aluminum Wheel
(standard on LS
and LT 1/2-ton)



18" Aluminum Wheel
(available on LT 1/2-ton;
requires available Z71
Off-Road Suspension Package)



18" 12-Spoke
Aluminum Wheel
(standard on Tahoe Hybrid)



20" Polished-Aluminum
Wheel (standard on LTZ,
available on LS and LT 1/2-ton)



20" Chrome-Aluminum
Wheel (available on LTZ)

¹ Extra-cost color. ² Not available with Z71 Off-Road Suspension Package. ³ Available Fall 2012. ⁴ Promotional color. Available Spring 2013. ⁵ Available only on LTZ.

SELECT VEHICLE FEATURES

TAHOE LS



8-passenger seating; 9-passenger seating available

Premium Cloth seats

Front bucket seats with 6-way power adjusters

Tri-zone manual climate controls

USB port¹ and Bluetooth[®] wireless technology² for select phones

SiriusXM Radio³ with three trial months

OnStar⁴ Directions & Connections[®] Plan standard for the first six months



TAHOE LT



In addition to or replacing LS features, LT includes:

8-passenger seating; 7-passenger seating available

Leather-appointed first- and second-row seats with heated front seats

Tri-zone automatic climate controls

Bose[®] 9-speaker sound system

Remote vehicle starter system

Rear Park Assist

Power-adjustable pedals



¹ Not compatible with all devices. ² Go to gm.com/bluetooth to find out which phones are compatible with the vehicle. ³ If you subscribe after your trial period, subscriptions are continuous until you call SiriusXM to cancel. See SiriusXM Customer Agreement for complete terms at siriusxm.com. Other fees and taxes will apply. All fees and programming subject to change. XM satellite service is available only in the 48 contiguous United States and Washington, D.C. ⁴ Visit onstar.com for coverage map, details and system limitations. Services vary by model and conditions. OnStar acts as a link to existing emergency service providers.

TAHOE LTZ



In addition to or replacing LT features, LTZ includes:

7-passenger seating; 8-passenger seating available

Perforated leather-appointed first- and second-row seats

Front bucket seats with 12-way power adjusters

Heated and cooled first-row seats; heated second-row seats with power release

Power-remote liftgate

20" polished-aluminum wheels

Touch-screen navigation radio with rear vision camera display

SiriusXM NavTraffic¹ with three trial months

Bose® Centerpoint® 10-speaker surround sound system

Heated steering wheel

Side Blind Zone Alert



TAHOE HYBRID⁵



In addition to or replacing LT features, Hybrid includes:

8-passenger seating

Vortec 6.0L V8 with Active Fuel Management

Hybrid Propulsion System

Touch-screen navigation radio with rear vision camera display

SiriusXM NavTraffic¹ with 3-year subscription



¹ If you subscribe after your trial period, subscriptions are continuous until you call SiriusXM to cancel. See SiriusXM Customer Agreement for complete terms at siriusxm.com. Other fees and taxes will apply. All fees and programming subject to change. For more information about NavTraffic, visit siriusxm.com/navtraffic. XM satellite service is available only in the 48 contiguous United States and Washington, D.C.

TAHOE SPECIFICATIONS

	LS	LT	LTZ	HY ¹
EXTERIOR				
Assist steps: Black	■	■ ²	■	■
Power-retractable with chrome accent strip	-	-	□	-
Door handles: Body-color	■	■	-	■
Chrome	-	-	■	-
Liftgate: Power-remote	-	□ ³	■	-
Lights: Automatic headlamps and daytime running lamps	■	■	■	■
Luggage rack: Roof-mounted with side and center rails	■	■	■	-
Mirrors: Power, heated driver- and passenger-side	■	■	■	■
Power-folding, driver-side auto-dimming	-	□ ³	■	■
Rear Park Assist	□ ⁴	■	■	■
ENGINES/CHASSIS				
Engine: Vortec 5.3L V8 with Active Fuel Management and E85 FlexFuel capability ⁵	■	■	■	-
Vortec 6.0L V8 with Active Fuel Management	-	-	-	■
Heavy-Duty Trailering Package				
	□	□	□	-
Suspension: Premium Smooth Ride Autoride	■	■	-	■
	-	-	■	-
Transfer case: Active, single-speed, electronic Autotrac [®] with rotary controls ⁶ (4WD)	■	■	-	-
Active, 2-speed, electronic Autotrac with rotary controls and Neutral position for dinghy towing (4WD)	□ ⁷	□ ⁸	■	■
Transmission: 6-speed automatic, electronically controlled with overdrive and Tow/Haul mode	■	■	■	-
Strong hybrid-specific, electronically controlled	-	-	-	■
Z71 Off-Road Suspension Package: Specially tuned springs and monotube shock absorbers, high-capacity air cleaner, Skid Plate Package with aluminum front underbody shield, automatic locking rear differential, 18" aluminum wheels with on-/off-road blackwall tires, recovery hooks, tubular assist steps, unique front fascia with chrome grille insert, Z71-specific gauge cluster, brushed-aluminum appearance interior accents and 2-speed transfer case with 4WD models				
	-	□	-	-
SAFETY & SECURITY				
Air bags: ⁹ Driver and right-front passenger, dual-stage, frontal; passenger-side includes Passenger Sensing System; head-curtain side-impact for all outboard seating positions with rollover sensor; seat-mounted side-impact, driver and right-front passenger for thorax and pelvic protection	■	■	■	■

■ STANDARD □ AVAILABLE – NOT AVAILABLE

	LS	LT	LTZ	HY ¹
SAFETY & SECURITY (CONTINUED)				
Brakes: 4-wheel antilock disc	■	■	■	■
OnStar ¹⁰ Directions & Connections Plan standard for six months, includes Automatic Crash Response	■	■	■	■
Side Blind Zone Alert	-	-	■	-
StabiliTrak Electronic Stability Control System with Traction Control	■	■	■	■
INTERIOR				
Bluetooth [®] wireless technology ¹¹ for select phones	■	■	■	■
Climate control: Tri-zone manual with individual climate settings for driver, right-front passenger and rear passengers	■	-	-	-
Tri-zone automatic with individual climate settings for driver, right-front passenger and rear passengers	-	■	■	■
Convenience Package: Power-adjustable pedals, remote vehicle starter system, Rear Park Assist, rear vision camera and auto dimming inside rearview mirror with rear vision camera display				
	□	-	-	-
Instrumentation: Analog, with speedometer, odometer with trip odometer, fuel level, engine temperature, oil pressure and tachometer	■	■	■	■
Luxury Package: 10-way power front bucket seats with leather appointments; heated second-row seats with power-release function; outside, heated, power-adjustable, power-folding mirrors; power-remote liftgate; inside auto-dimming rearview mirror; and Universal Home Remote				
	-	□	-	-
Pedals: Power-adjustable for accelerator and brake	□ ⁴	■	■	■
Rear vision camera	□ ⁴	□	■	■
Remote Keyless Entry	■	■	■	■
Remote vehicle starter system	□ ⁴	■	■	■
Steering wheel: Leather-wrapped with audio and cruise controls	■	■	■	■
Heated	-	-	■	-
Sunroof: Power, tilt-sliding with express-open/-close and wind deflector	-	□	□	□
Windows: Power, with driver express-down and lockout features	■	■	■	■

	LS	LT	LTZ	HY ¹
SEATING				
Premium Cloth front bucket seats with 6-way power driver and right-front passenger seats and floor console	■	-	-	-
Premium Cloth 40/20/40 split-bench front seat with 6-way power driver and manual front passenger seats	□	-	-	-
Custom Leather-appointed, heated front bucket seats with 6-way power driver and right-front passenger seats and floor console	-	■	-	■
Custom Leather-appointed, heated front bucket seats with 10-way power driver and right-front passenger seats and floor console	-	□ ³	-	-
Perforated leather-appointed, heated and cooled front bucket seats with 12-way power driver and right-front passenger seats, driver memory, driver/passenger power recline and lumbar support, and uplevel floor console	-	-	■	-
AUDIO SYSTEMS				
AM/FM stereo, CD/MP3 player	■	■	-	-
AM/FM stereo, CD/MP3 player with touch-screen navigation	-	□ ¹²	■	■
6-speaker sound system	■	-	-	-
Bose [®] 9-speaker sound system	-	■	-	■
Bose Centerpoint [®] 10-speaker surround sound system	-	-	■	-
Entertainment system: Rear-seat DVD player with remote control and LCD color display in second row	-	□	□ ¹²	□ ¹²
SiriusXM NavTraffic ¹³	-	□ ¹⁴	-	-
SiriusXM NavTraffic ¹³ with 3-month trial	-	-	■	-
SiriusXM NavTraffic ¹³ with 3-year subscription	-	-	-	■
SiriusXM Radio ¹³ 3-month trial	■	■	■	■
USB port ¹⁵	■	■	■	■
WHEELS				
17" aluminum	■	■	-	-
18" aluminum	-	□ ¹⁶	-	-
18" 12-spoke aluminum	-	-	-	■
20" polished-aluminum	□	□	■	-
20" chrome-aluminum	-	-	□	-
Tire: Full-size spare	■	■	■	-

¹ Available at participating dealers. ² Not available with Z71 Off-Road Suspension Package. ³ Requires available Luxury Package. ⁴ Requires available Convenience Package. ⁵ E85 is a combination of 85% ethanol and 15% gasoline. Go to chevy.com/biofuels to see if there is an E85 fuel station near you. When running on E85, Tahoe offers an EPA-estimated 11 MPG city/16 highway. ⁶ Not available with Heavy-Duty Trailering Package. ⁷ Requires available Heavy-Duty Trailering Package. ⁸ Requires available Heavy-Duty Trailering Package or Z71 Off-Road Suspension Package. ⁹ Always use safety belts and the correct restraint for your child's age and size. Even in vehicles equipped with the Passenger Sensing System, children are safer when properly secured in a rear seat in the appropriate infant, child or booster seat. Never place a rear-facing infant restraint in the front seat of any vehicle equipped with a passenger air bag. See the Owner's Manual and the child safety seat instructions for more safety information. ¹⁰ Visit onstar.com for coverage map, details and system limitations. Services vary by model and conditions. OnStar acts as a link to existing emergency service providers. ¹¹ Go to gm.com/bluetooth to find out which phones are compatible with the vehicle. ¹² Requires available Sun, Entertainment and Destinations Package. ¹³ If you subscribe after your trial period, subscriptions are continuous until you call SiriusXM to cancel. See SiriusXM Customer Agreement for complete terms at siriusxm.com. Other fees and taxes will apply. All fees and programming subject to change. For more information about NavTraffic, visit siriusxm.com/navtraffic. XM satellite service is available only in the 48 contiguous United States and Washington, D.C. ¹⁴ Requires available navigation radio. ¹⁵ Not compatible with all devices. ¹⁶ Requires available Z71 Off-Road Suspension Package.

TAHOE MAXIMUM CAPACITIES

EPA-ESTIMATED FUEL ECONOMY (WHEN RUNNING ON GASOLINE)	15 MPG city/21 highway/17 combined Hybrid: 20 MPG city/23 highway/21 combined
FUEL TANK (APPROXIMATE: GAS/HYBRID)	26/25 gallons
TRAILER WEIGHT RATING¹ (GAS/HYBRID)	2WD: 8,500/6,200 lbs. 4WD: 8,200/5,900 lbs.

SEATING	LS: seats 8, option for 9 LT: seats 8, option for 7 LTZ: seats 7, option for 8 Hybrid: seats 8
CARGO VOLUME² (CUBIC FEET)	Behind third-row seat: 16.9 With third-row seat folded: 60.3 With second- and third-row seats folded: 108.9

DIMENSIONS



68.2"
79.0"



116.0"
202.0"



DEALER-INSTALLED ACCESSORIES PERSONALIZE YOUR TAHOE AT CHEVY.COM/ACCESSORIES



Chrome Fuel Door



Highly Polished Exhaust Tip



Molded Hood Protector



Outside Rearview Mirror Covers



Splash Guards



Taillamp Guards

¹ Maximum trailer weight ratings are calculated assuming a properly equipped base vehicle, except for any option(s) necessary to achieve the rating, plus driver. The weight of other optional equipment, passengers and cargo will reduce the maximum trailer weight your vehicle can tow. See your Chevy dealer for additional details. ² Cargo and load capacity limited by weight and distribution.

SELECT VEHICLE FEATURES

SUBURBAN LS (1/2-TON / 3/4-TON)



8-passenger seating; 9-passenger seating available

Premium Cloth seats

Front bucket seats with 6-way power adjusters

Tri-zone manual climate controls

USB port¹ and Bluetooth[®] wireless technology² for select phones

SiriusXM Radio³ with three trial months

OnStar⁴ Directions & Connections Plan standard for the first six months

SUBURBAN LT (1/2-TON / 3/4-TON)



In addition to or replacing LS features, LT includes:

8-passenger seating; 7-passenger seating available

Leather-appointed first- and second-row seats with heated front seats

Foglamps

Tri-zone automatic climate controls

Bose[®] 9-speaker sound system

Remote vehicle starter system

Rear Park Assist

Power-adjustable pedals



¹ Not compatible with all devices. ² Go to gm.com/bluetooth to find out which phones are compatible with the vehicle. ³ If you subscribe after your trial period, subscriptions are continuous until you call SiriusXM to cancel. See SiriusXM Customer Agreement for complete terms at siriusxm.com. Other fees and taxes will apply. All fees and programming subject to change. XM satellite service is available only in the 48 contiguous United States and Washington, D.C. ⁴ Visit onstar.com for coverage map, details and system limitations. Services vary by model and conditions.

SELECT VEHICLE FEATURES

SUBURBAN LTZ (1/2-TON)



In addition to or replacing LT features, LTZ includes:

7-passenger seating; 8-passenger seating available

Perforated leather-appointed first- and second-row seats

Front bucket seats with 12-way power adjusters

Heated and cooled first-row seats; heated second-row seats with power release

Power-remote liftgate

20" polished-aluminum wheels

Touch-screen navigation radio with rear vision camera display

SiriusXM NavTraffic¹ with three trial months

Bose[®] Centerpoint[®] 10-speaker surround sound system

Heated steering wheel

Side Blind Zone Alert



¹ If you subscribe after your trial period, subscriptions are continuous until you call SiriusXM to cancel. See SiriusXM Customer Agreement for complete terms at siriusxm.com. Other fees and taxes will apply. All fees and programming subject to change. For more information about NavTraffic, visit siriusxm.com/navtraffic. XM satellite service is available only in the 48 contiguous United States and Washington, D.C.

SUBURBAN SPECIFICATIONS

	LS	LT	LTZ
EXTERIOR			
Assist steps: Black	■	■ ¹	■
Power-retractable with chrome accent strip	–	–	□
Door handles: Body-color	■	■	–
Chrome	–	–	■
Liftgate: Power-remote with washer/wiper	–	□ ²	■
Lights: Automatic headlamps and daytime running lamps	■	■	■
Luggage rack: Roof-mounted with side and center rails	■	■	■
Mirrors: Power, heated driver- and passenger-side	■	■	■
Power-folding, driver-side auto-dimming	–	□ ²	■
Rear Park Assist	□ ³	■	■
ENGINES/CHASSIS			
Engine: Vortec 5.3L V8 with Active Fuel Management and E85 FlexFuel capability ⁴ (1/2-ton)	■	■	■
Vortec 6.0L V8 with Variable Valve Timing (3/4-ton)	■	■	–
Heavy-Duty Trailing Package (1/2-ton)	□	□	□
Suspension: Premium Smooth Ride (1/2-ton)	■	■	–
Handling/Trailing, heavy-duty (3/4-ton)	■	■	–
Autoride	–	–	■
Transfer case: Active, single-speed, electronic Autotrac [®] with rotary controls ⁵ (4WD 1/2-ton)	■	■	–
Active, 2-speed, electronic Autotrac with rotary controls and Neutral position for dinghy towing (4WD 1/2-ton)	□ ⁶	□ ⁷	■
Active, 2-speed, electronic Autotrac with rotary controls and Neutral position for dinghy towing (4WD 3/4-ton)	■	■	–
Transmission: Hydra-Matic [®] 6-speed automatic electronically controlled with overdrive and Tow/Haul mode (1/2-ton)	■	■	■
Hydra-Matic 6-speed automatic, heavy-duty, electronically controlled with overdrive and Tow/Haul mode (3/4-ton)	■	■	–
Z71 Off-Road Suspension Package: Specially tuned springs and monotube shock absorbers, high-capacity air cleaner, Skid Plate Package with aluminum front underbody shield, automatic locking rear differential, 18" aluminum wheels with on-/off-road blackwall tires, recovery hooks, tubular assist steps, unique front fascia with chrome grille insert, Z71-specific gauge cluster, brushed-aluminum appearance interior accents and 2-speed transfer case with 4WD models (1/2-ton)	–	□	–

■ STANDARD □ AVAILABLE – NOT AVAILABLE

	LS	LT	LTZ
SAFETY & SECURITY			
Air bags: ⁸ Driver and right-front passenger, dual-stage, frontal; passenger-side includes Passenger Sensing System; head-curtain side-impact for all outboard positions; seat-mounted for driver and right-front passenger	■	■	■
Brakes: 4-wheel antilock disc	■	■	■
OnStar ⁹ Directions & Connections Plan with Turn-by-Turn Navigation standard for the first six months	■	■	■
Side Blind Zone Alert	–	–	■
StabiliTrak Electronic Stability Control System with Traction Control	■	■	■
Tire Pressure Monitoring System (excludes spare)	■	■	■
Vehicle Theft-Deterrent System	■	■	■
INTERIOR			
Bluetooth [®] wireless technology ¹⁰ for select phones	■	■	■
Climate control: Tri-zone manual climate controls with individual climate settings for driver, right-front passenger and rear passengers	■	–	–
Tri-zone automatic climate controls with individual climate settings for driver, right-front passenger and rear passengers	–	■	■
Convenience Package: Power-adjustable pedals, remote vehicle starter system, Rear Park Assist, rear vision camera and inside rearview mirror with rear vision camera display	□	–	–
Instrumentation: Analog, with speedometer, odometer with trip odometer, fuel level, engine temperature, oil pressure and tachometer	■	■	■
Luxury Package: 10-way power front bucket seats with leather appointments; heated second-row seats with power-release function; outside, heated, power-adjustable, power-folding mirrors; power-remote liftgate; inside auto-dimming rearview mirror; and Universal Home Remote	–	□	–
Pedals: Power-adjustable for accelerator and brake	□ ³	■	■
Rear vision camera	□ ³	□	■
Remote Keyless Entry	■	■	■
Remote vehicle starter system	□ ³	■	■
Steering wheel: Leather-wrapped with audio and cruise controls	■	■	■
Heated	–	–	■
Sunroof: Power, tilt-sliding with express-open/-close and wind deflector	–	□	□

	LS	LT	LTZ
SEATING			
Premium Cloth front bucket seats with 6-way power driver and right-front passenger seats and floor console	■	–	–
Premium Cloth 40/20/40 split-bench front seat with 6-way power driver and manual front passenger seats	□	–	–
Custom Leather-appointed, heated front bucket seats with 6-way power driver and right-front passenger seats and floor console	–	■	–
Custom Leather-appointed, heated front bucket seats with 10-way power driver and right-front passenger seats and floor console	–	□ ²	–
Perforated leather-appointed, heated and cooled front bucket seats with 12-way power driver and right-front passenger seats, driver memory, driver/passenger power recline and lumbar support, and uplevel floor console	–	–	■
AUDIO SYSTEMS			
AM/FM stereo, CD/MP3 player	■	■	–
AM/FM stereo, CD/MP3 player with touch-screen navigation	–	□ ¹¹	■
6-speaker sound system	■	–	–
Bose [®] 9-speaker sound system	–	■	–
Bose Centerpoint [®] 10-speaker surround sound system	–	–	■
Entertainment system: Rear-seat DVD player with remote control and LCD color display in second and third rows	–	□ ¹¹	□ ¹¹
SiriusXM NavTraffic ¹²	–	□ ¹³	–
SiriusXM NavTraffic ¹² with 3-month trial	–	–	■
SiriusXM Radio ¹² with 3-month trial	■	■	■
USB port ¹⁴	■	■	■
WHEELS			
17" aluminum (1/2-ton)	■	■	–
17" 8-lug aluminum (3/4-ton)	■	■	–
18" aluminum (1/2-ton)	–	□ ¹⁵	–
20" polished-aluminum (1/2-ton)	□	□	■
20" chrome-aluminum	–	–	□
Tire: Full-size spare	■	■	■

¹ Not available with Z71 Off-Road Suspension Package. ² Requires available Luxury Package. ³ Requires available Convenience Package. ⁴ E85 is a combination of 85% ethanol and 15% gasoline. Go to chevy.com/biofuels to see if there is an E85 fuel station near you. When running on E85, Suburban offers an EPA-estimated 11 MPG city/16 highway. ⁵ Not available with Heavy-Duty Trailing Package. ⁶ Requires available Heavy-Duty Trailing Package. ⁷ Requires available Heavy-Duty Trailing Package or Z71 Off-Road Suspension Package. ⁸ Always use safety belts and the correct restraint for your child's age and size. Even in vehicles equipped with the Passenger Sensing System, children are safer when properly secured in a rear seat in the appropriate infant, child or booster seat. Never place a rear-facing infant restraint in the front seat of any vehicle equipped with a passenger air bag. See the Owner's Manual and the child safety seat instructions for more safety information. ⁹ Visit onstar.com for coverage map, details and system limitations. Services vary by model and conditions. ¹⁰ Go to gm.com/bluetooth to find out which phones are compatible with the vehicle. ¹¹ Requires available Sun, Entertainment and Destinations Package. ¹² If you subscribe after your trial period, subscriptions are continuous until you call SiriusXM to cancel. See SiriusXM Customer Agreement for complete terms at siriusxm.com. Other fees and taxes will apply. All fees and programming subject to change. For more information about NavTraffic, visit siriusxm.com/navtraffic. XM satellite service is available only in the 48 contiguous United States and Washington, D.C. ¹³ Requires available navigation radio. ¹⁴ Not compatible with all devices. ¹⁵ Requires available Z71 Off-Road Suspension Package.

SUBURBAN MAXIMUM CAPACITIES

EPA-ESTIMATED FUEL ECONOMY (WHEN RUNNING ON GASOLINE)
 2WD (1/2-ton): 15 MPG city/21 highway/17 combined
 4WD (1/2-ton): 15 MPG city/21 highway/17 combined
 2WD (3/4-ton): 10 MPG city/16 highway/12 combined
 4WD (3/4-ton): 10 MPG city/15 highway/12 combined

FUEL TANK (APPROXIMATE: 1/2-TON / 3/4-TON) 31/39 gallons

TRAILER WEIGHT RATING¹ (1/2-TON / 3/4-TON)
 2WD: 8,100/9,600 lbs.
 4WD: 8,000/9,400 lbs.

SEATING

LS: seats 8, option for 9
 LT: seats 8, option for 7
 LTZ: seats 7, option for 8

CARGO VOLUME² (CUBIC FEET)

Behind third-row seat: 45.8
 With third-row seat folded: 90.0
 With second- and third-row seats folded: 137.4

DIMENSIONS



68.2"

79.1"



130.0"

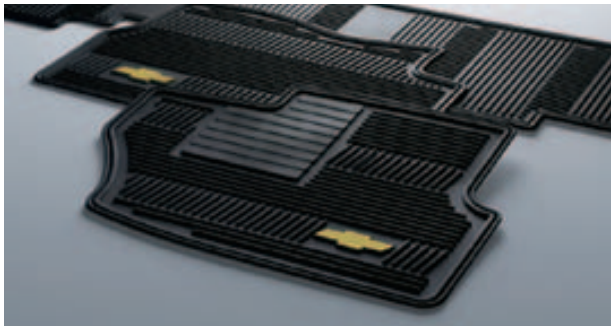
222.4"



67.0"

76.8"

DEALER-INSTALLED ACCESSORIES PERSONALIZE YOUR SUBURBAN AT CHEVY.COM/ACCESSORIES



All-Weather Premium Floor Mats



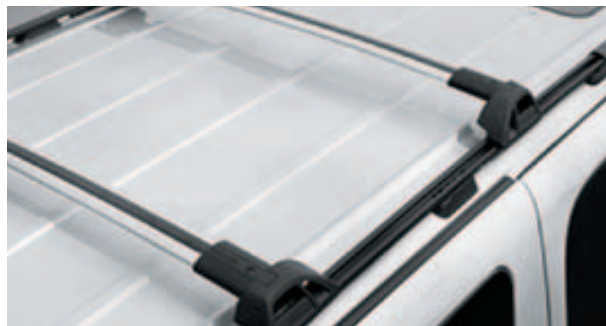
Assist Steps



Head Restraint DVD System



Hitch Ball Assembly



Roof Rack Cross Rail Package



Tow Hooks

¹ Maximum trailer weight ratings are calculated assuming a properly equipped base vehicle, except for any option(s) necessary to achieve the rating, plus driver. The weight of other optional equipment, passengers and cargo will reduce the maximum trailer weight your vehicle can tow. See your Chevy dealer for additional details. ² Cargo and load capacity limited by weight and distribution.

WARRANTY INFORMATION

100,000-MILE/5-YEAR TRANSFERABLE POWERTRAIN LIMITED WARRANTY. Every 2013 Chevrolet passenger car, light-duty truck, SUV and crossover comes with a 100,000-mile/5-year (whichever comes first) transferable Powertrain Limited Warranty. Plus, you get 100,000 miles/5 years (whichever comes first) of the 24/7 Roadside Assistance Program, the Courtesy Transportation Program, and much more. See dealer for details.

NEW VEHICLE LIMITED WARRANTY. GM vehicles registered in the USA are covered for 36,000 miles/3 years (whichever comes first). The complete vehicle is covered, including tires, towing to your nearest Chevrolet dealership and cosmetic corrosion resulting from defects. Repairs will be made to correct any vehicle defect, and most warranty repairs will be made at no charge. In addition, rust-through corrosion will be covered for 100,000 miles/6 years (whichever comes first). See dealer for details.

CHEVROLET OWNER CENTER (GMOWNERCENTER.COM/CHEVY). Register your vehicle with the Chevrolet Owner Center and receive benefits such as online access to your vehicle Owner's Manual, maintenance schedule reminders, service history tracking, warranty and service information, safety information, special offers and privileges, and news and events.

IMPORTANT INFORMATION

ENGINES. Chevrolet products are equipped with engines produced by GM Powertrain or other suppliers to GM worldwide. The engines in Chevrolet products may also be used in other GM makes and models.

ASSEMBLY. Chevrolet vehicles and their components are assembled or produced by different operating units of General Motors, its subsidiaries or suppliers to GM worldwide. We sometimes find it necessary to produce Chevrolet vehicles with different or differently sourced components than originally scheduled. Since some options may be unavailable when your vehicle is assembled, we suggest you verify that your vehicle includes the equipment you ordered and that, if there were changes, they are acceptable to you.

ONSTAR. OnStar services require vehicle electrical system (including battery), wireless service and GPS satellite signals to be available and operating for features to function properly. OnStar acts as a link to existing emergency service providers. Subscription Service Agreement required. Call 1-888-4ONSTAR (1-888-466-7827) or visit onstar.com for OnStar Terms and Conditions, Privacy Policy, details and system limitations.

A NOTE ON CHILD SAFETY. Always use safety belts and the correct restraint for your child's age and size. Even in vehicles equipped with the Passenger Sensing System, children are safer when properly secured in a rear seat in the appropriate infant, child or booster seat. Never place a rear-facing infant restraint in the front seat of any vehicle equipped with a passenger air bag. See the Owner's Manual and child safety seat instructions for more safety information.

IMPORTANT WORDS ABOUT THIS CATALOG. We have tried to make this catalog comprehensive and factual. We reserve the right, however, to make changes at any time, without notice, in prices, colors, materials, equipment, specifications, models and availability. Specifications, dimensions, measurements, ratings and other numbers in this catalog and other printed materials provided at the dealership or affixed to vehicles are approximations based on design and engineering drawings, prototypes and laboratory tests. Your vehicle may differ due to variations in manufacture and equipment. Since some information may have been updated since the time of printing, please check with your Chevrolet dealer for complete details. Chevrolet reserves the right to lengthen or shorten the model year for any product for any reason or to start and end model years at different times. Certain vehicle features may lose their usefulness over time due to obsolescence from technological changes. Tahoe Hybrid is available at participating dealers. Unless otherwise noted, all claims based on GM Large Utility segment and latest available competitive information. Excludes other GM vehicles.

SPARE TIRE INFORMATION. There is no standard jack or spare tire in the 2013 Chevrolet Tahoe Hybrid. Your vehicle has a tire sealant and compressor kit that uses a liquid tire sealant to temporarily seal up to a one-quarter-inch puncture in the tread area of the tire. After using the tire inflator kit, it is recommended that you take the tire to an authorized retailer for inspection and repair as soon as possible, but at least within 100 miles of driving. The tire sealant cannot seal and inflate sidewall damage, punctures larger than one-quarter inch, or a tire that has unseated from the wheel. The sealant can only be used on one tire and for one time before its expiration date.

FLEET ORDERS. Some standard content may be deleted on fleet orders. See dealer for details.

CHEVY.COM. Offers shopping tools such as Chevy vehicle information, Build and Price, Find a Vehicle, Request Info, Email Sign-Up, Compare Vehicles, Financial Tools... and much more.

OWNER SERVICES. Chevrolet is committed to enhancing the ownership experience through a wide array of programs. For more information about 24-hour Roadside Assistance, Courtesy Transportation, Customer Assistance Center, Chevy Safety, GM Mobility, Chevrolet Owner Center, marketing and incentives, as well as services for GM Card members, visit chevy.com.

CHEVY.COM/SAFETY. Chevrolet is committed to keeping you and your family safe—from the start of your journey to your destination. That's why every Chevrolet is designed with a comprehensive list of safety and security features to help give you peace of mind.

GMMOBILITY.COM (1-800-323-9935). GM Mobility™ offers financial assistance for eligible adaptive equipment to make automotive travel easier for persons with disabilities or special transportation needs. To learn more about special GM Mobility offers, visit gmmobility.com.

GMCARDMEMBERSERVICES.COM. Did you know about the family of reward credit cards that can help you get a great deal on a new GM car, light-duty truck, SUV or crossover? With a GM reward card, you accrue earnings on every credit card purchase to use toward the purchase or lease of an eligible new GM vehicle. With three cards to choose from, you're sure to find one that suits you best.

ECOLOGIC WINDOW LABEL. As part of our Ecologic™ initiative for environmental responsibility, every 2013 Chevrolet vehicle features a new Ecologic window label detailing its fuel-saving technologies, responsible manufacturing processes and end-of-life recyclability. Visit chevrolet.com/ecologic for more information.

GM, the GM Logo, Chevrolet, the Chevrolet Logo, and the slogans, emblems, vehicle model names, vehicle body designs and other marks appearing in this catalog are the trademarks and/or service marks of General Motors, its subsidiaries, affiliates or licensors. ©2012 OnStar. All rights reserved. Sirius, XM and all related marks and logos are trademarks of SiriusXM Radio Inc. The Bluetooth word mark is a registered trademark owned by Bluetooth SIG, Inc., and any use of such mark by Chevrolet is under license. ©2012 General Motors. All rights reserved. June 2012

OWNERSHIP EXTRAS



chevy.com/warranty



ACCESSORIES
chevy.com/accessories



onstar.com



siriusxm.com



facebook.com/chevrolet



twitter.com/chevrolet



youtube.com/chevrolet



Suburban LTZ shown in
Silver Ice Metallic.



chevy.com