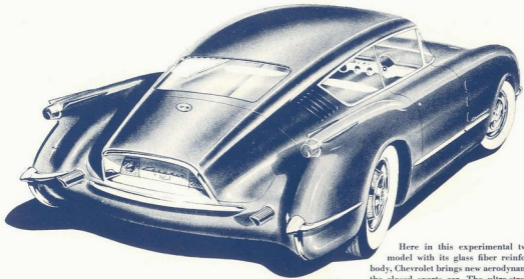




Once again **Chevrolet**

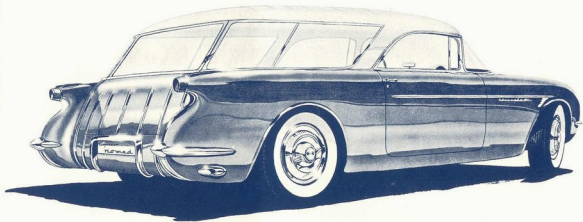
*creates new patterns for
the cars of tomorrow.*

• *The Chevrolet Corvair*



Here in this experimental two-passenger model with its glass fiber reinforced plastic body, Chevrolet brings new aerodynamic design to the closed sports car. The ultra-streamlined top sweeps back to a jet exhaust-type rear opening.

• *The Chevrolet nomad*



Here for the first time is an experimental model combining the sleek styling of a sports car with the versatility and utility of a Station Wagon. The glass fiber reinforced plastic body affords unusual visibility with seating

space for six passengers. The electrically operated rear window automatically retracts into the tail gate as it is unlocked, and may also be controlled by a push button on the instrument panel.

The Corvair and The Nomad, two purely experimental models, join the Chevrolet Corvette—the first All-American sports car to reach production—as examples of the advanced design and engineering characteristic of Chevrolet.

CHEVROLET DIVISION—GENERAL MOTORS CORPORATION

