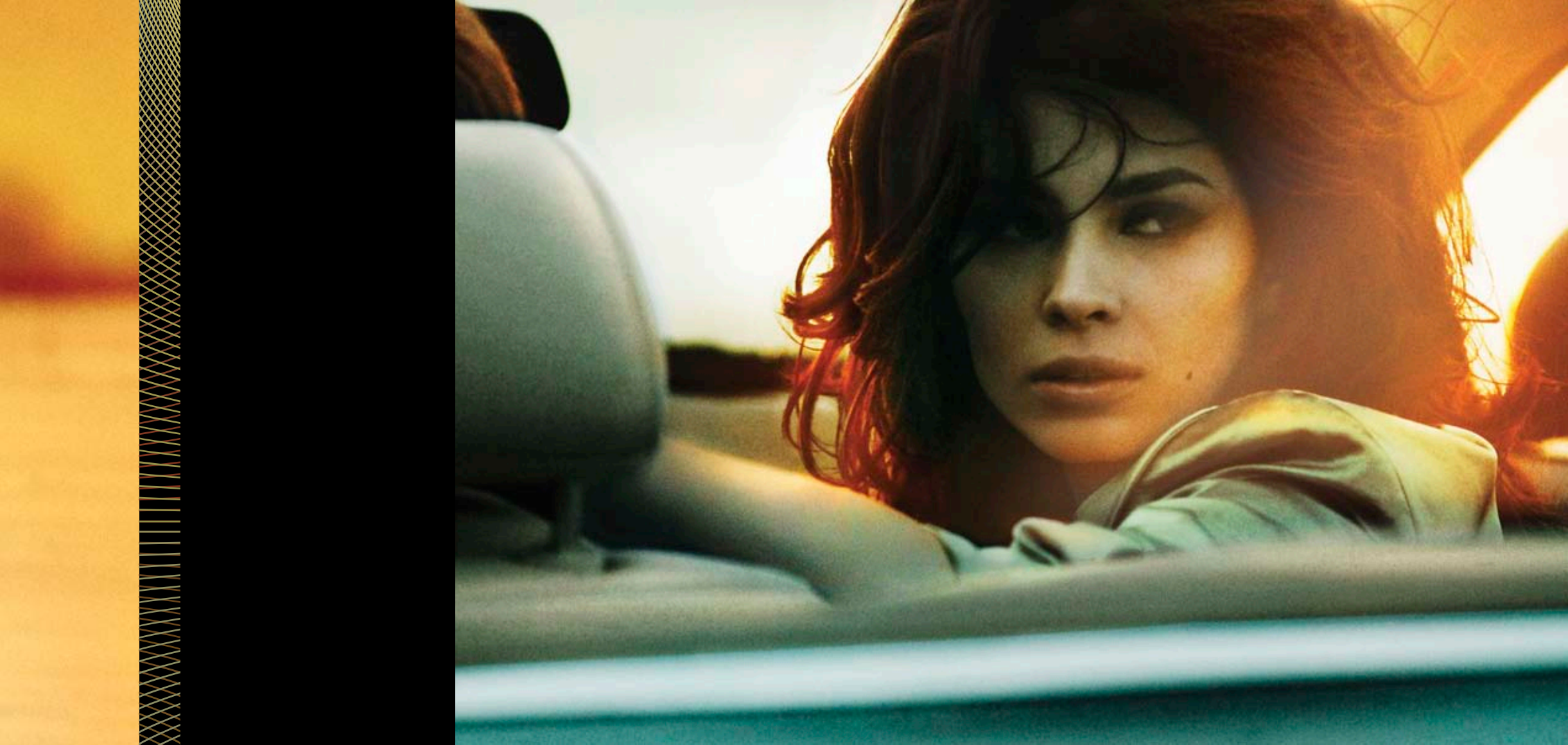


2008 XK







THE XK. DESIRE BY DESIGN.



HERE IS A WORK OF EMOTIONAL ENGINEERING THAT GOES BEYOND THE STANDARD SPORTS CAR SOLUTIONS. BEAUTIFUL, FAST, AND DISTINCTIVE, THE XK EPITOMIZES A DARING VISION THAT HAS BEEN BROUGHT TO LIFE BY JAGUAR'S PASSIONATE DESIGN AND ENGINEERING TEAMS, WORKING CLOSELY TOGETHER FROM THE IDEA'S INCEPTION. EVERY MILLIMETER IS THOUGHT OUT AND FITTED INTO A DRIVING EXPERIENCE THAT IS FAR GREATER THAN THE SUM OF THE XK'S EXTRAORDINARY PARTS. THIS IS WHAT MAKES THE XK A JAGUAR. AND THIS IS WHAT MAKES JAGUAR UNIQUE.







THE SLEEK SKIN OF THE XK is a monocoque aluminum-alloy design bonded with aerospace epoxy and riveting. Incredibly light and stiffer than the previous steel body, *this revolutionary body quickens acceleration, reduces pendulum effects in turns, shortens braking distances, and sharpens agility and performance.* THIS LIGHTWEIGHT VEHICLE ARCHITECTURE (LVA) also results in improved fuel economy¹ and lower emissions.

AT THE XK'S HEART IS JAGUAR'S all-aluminum 32-valve, 4.2-liter AJ-V8, with camshaft phasing *to quicken response.* This refined 300-hp engine is matched with a 6-speed, sequential-shift ZF automatic transmission. Gears are selected via automatic, automatic sport, or manual modes, using the CONSOLE FORMULA 1-TYPE STEERING WHEEL-MOUNTED PADDLES, which provide super-fast responsive fingertip command (shift times of 600 milliseconds), ensuring smooth torque control. And for stopping, the XK offers oversized ventilated ABS discs, and Electronic Brakeforce Distribution (EBD) that measures load and speed. *A harmony of power and control.*

¹ XK EPA estimated 16 MPG city/25 MPG highway. XKR EPA estimated 15 MPG city/23 MPG highway.





THE XKR. EXHILARATION BEGINS HERE. With its muscular stance, hood louver supercharger ports, and bold R badging, THE XKR exudes aggression. The red start button beckons, and when the engine ignites, this Eaton-supercharged, active-exhaust, 32-VALVE, 4.2-LITER AJ-V8 leaves no doubt: *it's time to move.* 420 hp at 6250 rpm and peak torque of 413 lb.-ft. at 4000 rpm propel the convertible from 0 to 60 in 5.0 seconds, *and the coupe in just 4.9 seconds.*

Combine this with the 6-speed sequential-shift ZF automatic transmission and ultra-quick steering wheel paddles, a quad exhaust, enhanced Computer Active Technology Suspension (ECATS), and an engine roar that's riveting; *and you have driving at its most thrilling.*

R





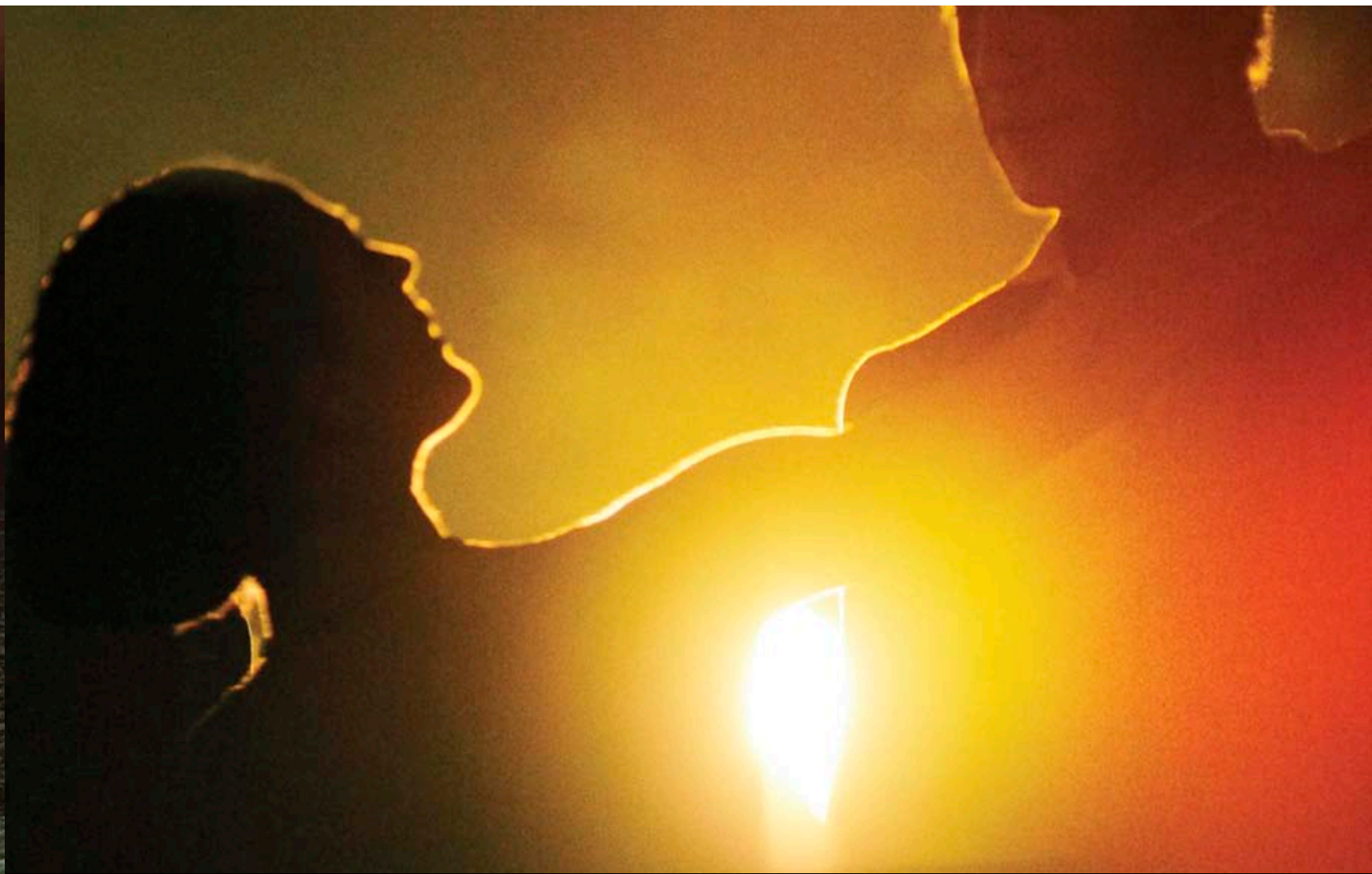


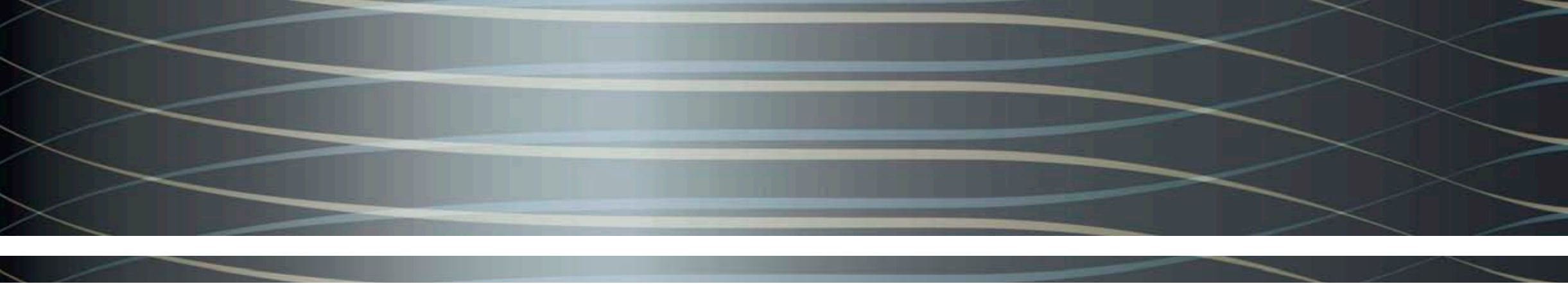
TECHNOLOGY AND INTUITION. IN THE XK, electronic controls offer *intelligent, beneficial support*, assisting the driver without complicating the drive.

ON THE DASH, A 7" COLOR TOUCHSCREEN uses Macromedia Flash® software – for the first time in a car – to enable easy management of climate, audio, navigation, and **BLUETOOTH® WIRELESS CONNECTIVITY**. Optional active front lighting turns **SELF-LEVELING BI-XENON HEADLAMPS** to see around bends. Noise is diminished by **INTEGRATED ACOUSTIC DAMPENING (IAD)**, with under-hood absorbers, engine compartment seals, and laminated windshield glass.

KEYLESS ENTRY ADDS CONVENIENCE and tightens security. Available **DOLBY® PRO LOGIC® II 525-WATT AUDIO** and **160-CHANNEL SIRIUS® SATELLITE RADIO** completely surround you with sound. In the convertible, the top is a power-latching, self-stowing, three-layer, flush-fold *engineering marvel* with color-keyed tonneau cover.



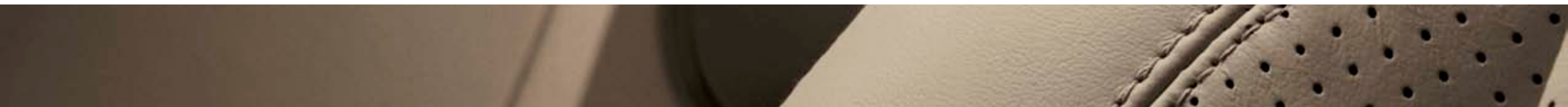














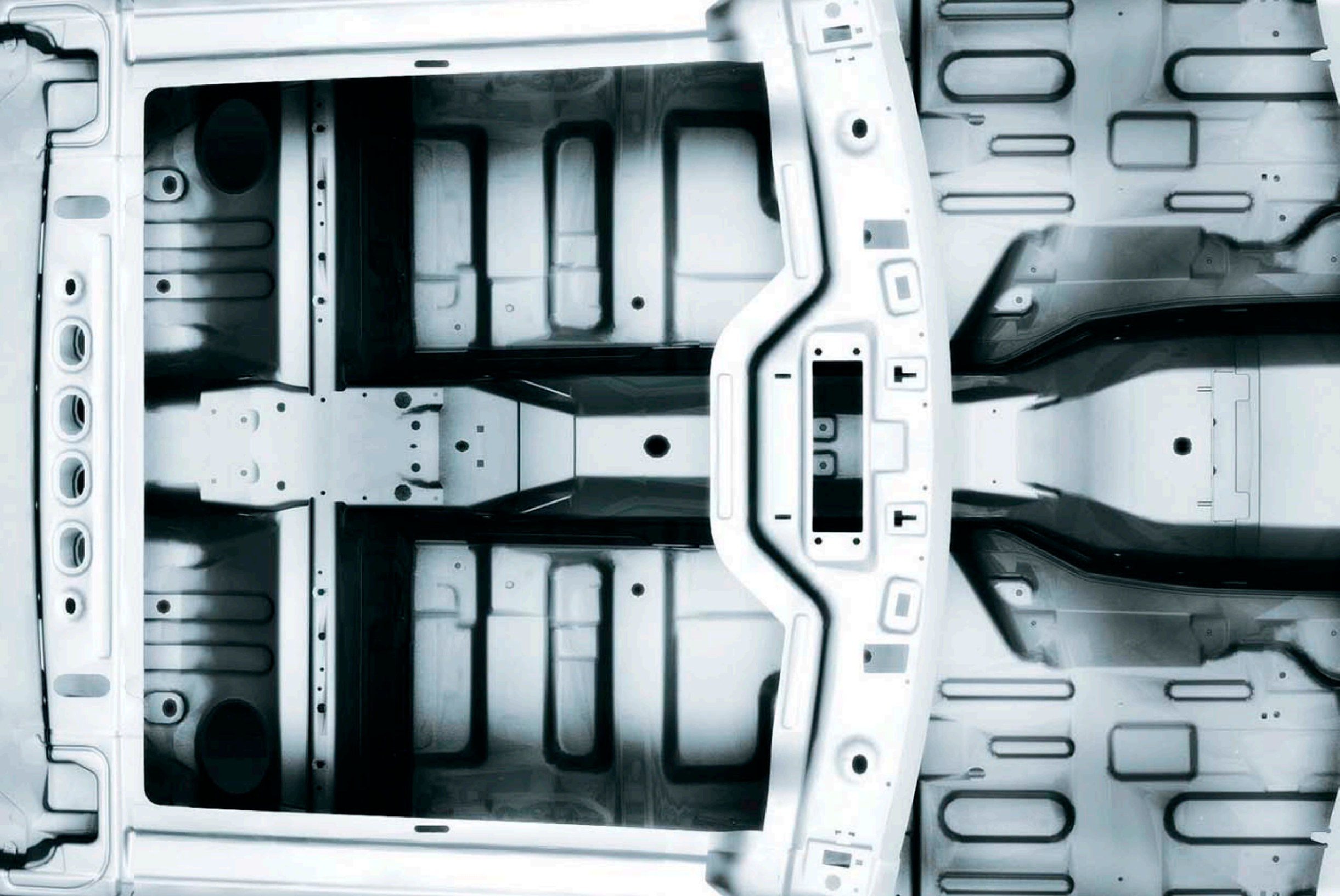
JAGUAR'S DESIGN PHILOSOPHY IS TRANSFORMING LUXURY. NOTHING IS SPARED IN THE CRAFTING OF AN XK INTERIOR. EVERY DETAIL IS RENDERED WITH *confidence and care* –FROM THE FLUID METALWORK TO THE BEAUTIFULLY STITCHED, **ITALIAN LEATHER HEATED SEATING** WITH AVAILABLE 16-WAY ADJUSTABILITY.

FROM THE 7" COLOR DISPLAY SCREEN TO A 180-MPH SPEEDOMETER. FROM THE SEMIACTIVE SPORTS EXHAUST ON THE XK (FULLY ACTIVE ON THE XKR) THAT MUTES WHEN APPROPRIATE BUT ROARS WHEN UNLEASHED. FROM THE FLAWLESSLY SHAPED AND **POLISHED WOOD VENEERS** TO THE UNIQUE ALUMINUM-WEAVE DASH TRIM. *This is Jaguar craftsmanship at its finest.*



LEFT TO RIGHT: LUXURY SPORT SOFT-GRAIN LEATHER SEAT (SHOWN HERE IN CARAMEL), SPORT LEATHER SEAT (SHOWN HERE IN WARM CHARCOAL), LUXURY SPORT LEATHER SEAT (SHOWN HERE IN IVORY).







THE XK IS A HIGH-PERFORMANCE VEHICLE THAT PERFORMS CONFIDENTLY IN UNEXPECTED CIRCUMSTANCES. This requires *innovative, intelligent protection systems.*¹ Doors are reinforced with ANTI-INTRUSION BARS to guard against side impact. 3-POINT SAFETY BELTS serve all seating positions, with pretensioners in the front. 4-WHEEL ABS DISCS, oversized and ventilated with floating aluminum calipers, stop the car.

DYNAMIC STABILITY CONTROL (DSC) aids braking by varying stopping force at each wheel and reduces engine torque to manage grip and yaw in hard cornering. ADAPTIVE RESTRAINT TECHNOLOGY SYSTEM (A.R.T.S.) deploys airbags according to occupant weight and safety belt use. AN ENGINEERED SAFETY CELL helps protect the occupants in the event of an impact. The radar-based cruise control is designed specifically to function well in inclement conditions.

AND IN THE CONVERTIBLE, massive bars sensor-deploy instantly in the case of a rollover to help create a shielded zone.

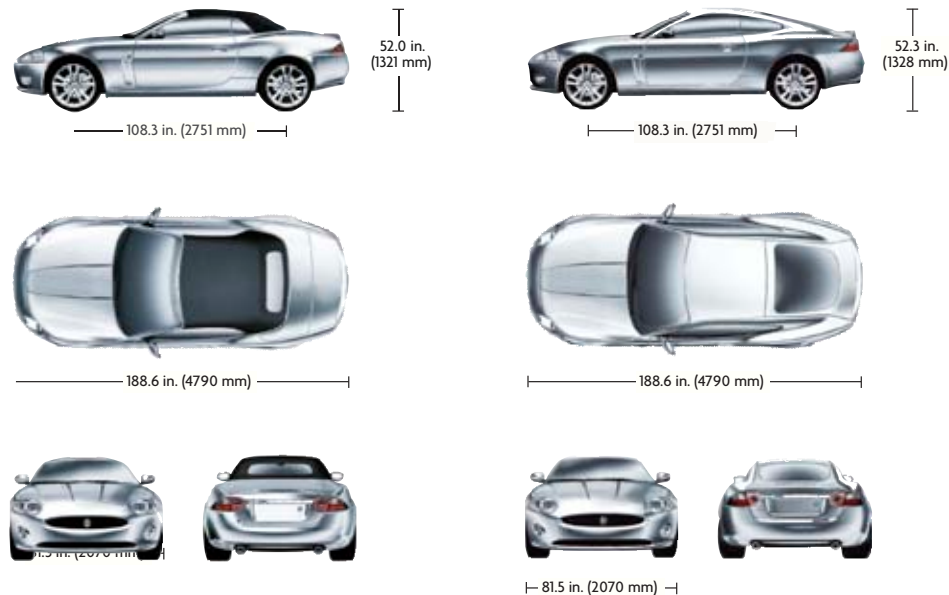
¹Drive responsibly. Always wear your safety belt. Even advanced technology cannot overcome the laws of physics or regulate all factors that influence vehicle control.



TECHNICAL SPECIFICATIONS

ENGINE	XK 4.2L V8 COUPE/CONVERTIBLE	XKR 4.2L V8 S/C COUPE/CONVERTIBLE
Type	All-alloy, quad overhead camshaft, 32-valve, 4196 cc 90° V8. Continuously variable inlet camshaft phasing. Fully catalyzed exhaust with semi-active exhaust system	All-alloy, quad overhead camshaft, 32-valve, 4196 cc 90° V8. Continuously variable inlet camshaft phasing. Fully catalyzed exhaust. Supercharged, intercooled engine
Cylinders	8	8
Valves per cylinder	4	4
Bore	3.39 in. (86 mm)	3.39 in. (86 mm)
Stroke	3.56 in. (90.3 mm)	3.56 in. (90.3 mm)
Capacity	4196 cc	4196 cc
Maximum power (SAE) @rev/min	300 bhp 6000	420 bhp 6250
Maximum torque (SAE) @rev/min	310 lb.-ft. 4100	413 lb.-ft. 4000
Compression ratio	11.0:1	9.1:1
Transmission	6-speed ZF automatic	6-speed ZF automatic
PERFORMANCE (MANUFACTURER'S ESTIMATES)		
Acceleration		
0-60 mph (0-100 km/h)	Coupe: 5.9 sec. (6.2 sec.) Convertible: 6.0 sec. (6.3 sec.) 155 limited (250)	Coupe: 4.9 sec. (5.1 sec.) Convertible: 5.0 sec. (5.2 sec.) 155 limited (250)
Maximum speed—mph (km/h)		
TANK CAPACITY		
Gallons (liters) approx.	18.7 (70.6)	18.7 (70.6)

XK DIMENSIONS:



SUSPENSION	XK 4.2L V8 COUPE/CONVERTIBLE	XKR 4.2L V8 S/C COUPE/CONVERTIBLE
Front	Independent double wishbone suspension with coil over enhanced Computer Active Technology Suspension (eCATS) adaptive dampers and anti-roll bar	Independent double wishbone suspension with coil over enhanced Computer Active Technology Suspension (eCATS) adaptive dampers and anti-roll bar
Rear	Independent wishbone suspension with coil over enhanced Computer Active Technology Suspension (eCATS) adaptive dampers and anti-roll bar	Independent wishbone suspension with coil over enhanced Computer Active Technology Suspension (eCATS) adaptive dampers and anti-roll bar R suspension tune
BRAKES		
System	Trac Dynamic Stability Control (Trac DSC) with Traction Control (TC). Anti-lock Brake System (ABS Plus). Emergency Brake Assist (EBA). Electronic Brakeforce Distribution (EBD). Hydraulic Brake Assist (HBA). Passive Brake Booster. Electronic Parking Brake (EPB)	Trac Dynamic Stability Control (Trac DSC) with Traction Control (TC). Anti-lock Brake System (ABS Plus). Emergency Brake Assist (EBA). Electronic Brakeforce Distribution (EBD). Hydraulic Brake Assist (HBA). Passive Brake Booster. Electronic Parking Brake (EPB)
Front	12.8" (326 mm) diameter ventilated brake discs and cast iron, single piston, sliding calipers	14.0" (355 mm) diameter ventilated brake discs and cast iron, single piston, sliding calipers
Rear	12.8" (326 mm) diameter ventilated brake discs and aluminum, single piston, sliding calipers	12.8" (326 mm) diameter ventilated brake discs and aluminum, single piston, sliding calipers
EXTERIOR DIMENSIONS		
Weight	Coupe: 3671 lbs. (1665 kg) Convertible: 3759 lbs. (1705 kg)	Coupe: 3814 lbs. (1734 kg) Convertible: 3920 lbs. (1782 kg)
Gross vehicle weight	Coupe: 4486 lbs. (2035 kg) Convertible: 4575 lbs. (2075 kg)	Coupe: 4586 lbs. (2085 kg) Convertible: 4674 lbs. (2125 kg)
Length	188.6 in. (4790 mm)	188.6 in. (4790 mm)
Width (including mirrors)	81.5 in. (2070 mm)	81.5 in. (2070 mm)
Width (excluding mirrors)	74.5 in. (1892 mm)	74.5 in. (1892 mm)
Height	Coupe: 52.3 in. (1328 mm) Convertible: 52.0 in. (1321 mm)	Coupe: 52.3 in. (1328 mm) Convertible: 52.0 in. (1321 mm)
Wheelbase	108.3 in. (2751 mm)	108.3 in. (2751 mm)
Ground clearance	4.7 in. (119 mm)	4.7 in. (119 mm)
Turning circle radius	33 ft. 4 in. (10.16 m)	33 ft. 4 in. (10.16 m)
Trunk vol. w/roof up (VDA)—w/spacesaver	Coupe: 10.6 cu. ft. (300 liters) Convertible: 10.0 cu. ft. (283 liters)	Coupe: 10.6 cu. ft. (300 liters) Convertible: 10.0 cu. ft. (283 liters)
Trunk vol. w/roof down (VDA)—w/spacesaver	Coupe: n/a Convertible: 71 cu. ft. (200 liters)	Coupe: n/a Convertible: 71 cu. ft. (200 liters)
WHEELS		
Wheel type	18" Venus 19" Carelia 19" Chrome Sabre 20" Senta	19" Jupiter 20" Cremona 20" Senta
TIRE SIZE		
18-inch front	245/45 ZR18	
18-inch rear	275/40 XR18	
19-inch front	245/40 XR19	
19-inch rear	275/35 XR19	
20-inch front	255/35 ZR20	
20-inch rear	285/30 ZR20	245/40 XR19 275/35 XR19 255/35 ZR20 285/30 ZR20
STEERING		
Type	Servotronic 2 power-assisted, speed-sensitive, variable-ratio rack-and-pinion steering	Servotronic 2 power-assisted, speed-sensitive, variable-ratio rack-and-pinion steering
Turning circle	37 ft. 8 in. (11.5 m)	37 ft. 8 in. (11.5 m)

STANDARD FEATURES

	XK	XKR		XK	XKR
ENGINE AND TRANSMISSION			EXTERIOR TRIM AND FEATURES (cont.)		
4.2-liter V8 engine with semi-active exhaust system	•		Quad bright exhaust tips		•
4.2-liter V8 supercharged/intercooled engine with fully active exhaust		•	Rain-sensing windshield wipers	•	•
6-speed ZF electronic automatic transmission	•	•	Reverse Park Control (RPC) with touchscreen visual aid	•	•
Jaguar Sequential Shift with steering wheel-mounted paddles	•	•	“Supercharged”-embossed body-colored hood louvers		•
BODY			SEATS		
2+2 seating configuration	•	•	Driver/passenger 10-way electric adjustment including 2-way variable lumbar, variable heating ¹ (3 setting levels) and manual headrest adjust	•	•
Riveted and bonded aluminum body	•	•	Front seat back map pockets	•	•
Two-door coupe with liftback or two-door convertible with 3-layer automatic folding roof and aluminum color-keyed tonneau cover	•	•	Leather seating surfaces	•	
SUSPENSION AND STEERING			Leather seating surfaces with R logo embossed on headrest		•
Enhanced Computer Active Technology Suspension (eCATS)	•		Memory function with 3 settings for driver and passenger seats, driver exterior mirrors and steering column	•	•
Enhanced Computer Active Technology Suspension (eCATS) with R Performance tuning		•	INTERIOR TRIM AND FEATURES		
Servotronic 2 power-assisted, speed-sensitive steering	•		3-spoke leather steering wheel and leather gearshift and chrome sides	•	
Unique supercharged-tuned, power-assisted, speed-sensitive, variable-ratio rack-and-pinion Bosch® Servotronic 2 steering		•	3-spoke leather steering wheel and leather gearshift with R badge knob and chrome sides		•
WHEELS AND TIRES			Accessory power point in glove box	•	•
Alloy space-saver spare wheel	•	•	Carpeted front footwell rugs	•	•
Jupiter cast alloy wheels: 8.5" x 19" (front), 9.5" x 19" (rear) Tires: 245/40 XR19 (front), 275/35 XR19 (rear)		•	Center console light	•	•
Venus cast alloy wheels: 8.5" x 18" (front), 9.5" x 18" (rear) Tires: 245/45 ZR18 (front), 275/40 ZR18 (rear)	•		Clock in touchscreen and message center	•	•
EXTERIOR TRIM AND FEATURES			Courtesy lamps with theater fade-out	•	•
Adaptive Front Lighting (AFL)		•	Cruise control with Active Speed Limiter (ASL)	•	•
Aluminum-finish power side vents with Jaguar name		•	Dual-zone automatic climate control with humidity sensor and air particle odor filter	•	•
Body-colored, 5-mph bumpers	•	•	Electrochromic interior rearview mirror	•	•
Body-colored integrated front fog light bezel and lower grille		•	Fuel-door release, remote	•	•
Body-colored trunk spoiler with integrated Center High Mount Stop Light (CHMSL)	•	•	Glove box light	•	•
Dual bright exhaust tips	•	•	Integrated HomeLink®-compatible garage door/entry gate opener	•	•
Exterior electrochromic door mirrors, power adjustable and heated, with memory function	•	•	Interior amber mood lighting over center console	•	•
High-intensity LEDs for rear fog light and reversing lamp	•	•	Jaguar Smart Key System – Keyless Entry and Keyless Start	•	•
Intelligent lighting system featuring Bi-Xenon headlamps with integrated corner lamps, automatic headlamp leveling and headlamps “on” with wipers, plus front fog lights and headlamp powerwash	•	•	Power front windows with one-touch open/close and anti-trap door glass	•	•
Jaguar-embossed aluminum-finish trunk plinth		•	Power tilt/telescoping steering wheel column with memory and programmable tilt-away entry/exit feature	•	•
Jaguar-embossed polished-finish trunk plinth	•		Satin Poplar or gloss Burl Walnut veneer finish on center console and dashboard	•	•
Mesh grille	•		Sliding center console armrest with concealed dual-front cupholders	•	•
Mesh grille (aluminum-finish color)		•	Technical weave aluminum veneer on center console and dashboard (optional Satin Poplar or gloss Burl Walnut veneer finish)		•
Power side body-colored vents with Jaguar name	•		Visor mirrors, dual illuminated with ticket-holder	•	•
Puddle lights (door mounted)	•	•	AUDIO AND COMMUNICATIONS		
			6-zone message center including trip computer with 256-color liquid crystal display	•	•
			Bluetooth® wireless technology	•	•

• Standard ○ Optional

¹ Heated front seats, heated windshield and headlight powerwash are standard in Canada.

STANDARD FEATURES

	XK	XKR		XK	XKR
AUDIO AND COMMUNICATIONS (cont.)			OPTIONAL WHEELS AND TIRES		
Hidden audio antenna in rear spoiler	•	•	Carelia cast alloy wheels: 8.5" x 19" (front), 9.5" x 19" (rear) Tires: 245/40 ZR19 (front), 275/35 ZR19 (rear)	•	
In-dash CD autochanger (6-disc capacity) and MP3 disc-compatible	•	•	Sabre cast alloy chromed wheels: 8.5" x 19" (front), 9.5" x 19" (rear) Runflat tires: 245/40 ZR19 (front), 275/35 ZR19 (rear) ²	•	
Jaguar sound system with tuner, 160-watt amplifier and 6 speakers	•	•	Senta cast alloy wheels: 9" x 20" (front), 9.5" x 20" (rear) ² Tires: 255/35 ZR20 (front), 285/30 ZR20 (rear)	•	•
Multifunction steering-wheel controls	•	•	LUXURY PACKAGE		
Navigation system with DVD mapping, route guidance	•	•	19" Carelia alloy wheels	•	
Windows Macromedia Flash® touchscreen control system with 7" color display	•	•	Adjustable seat bolsters	•	•
SAFETY			Heated leather steering wheel	•	•
Airbags – front and side, driver and front passenger ¹	•	•	Leather gearshift knob	•	•
Anti-lock Brake System (ABS Plus)	•	•	Leather instrument panel	•	•
Belt-minder system (front seats only)	•	•	Power-folding exterior mirrors	•	•
Electronic Brakeforce Distribution (EBD)	•	•	Soft-grain leather 16-way power seats (includes 4-way power lumbar support)	•	•
Emergency Brake Assist (EBA)	•	•	Soft-grain leather door panel inserts	•	•
Front and rear braking systems featuring 12.8" (326 mm) diameter ventilated brake discs	•		Soft-grain leather interior	•	•
Front and rear braking systems featuring 13.98" (355 mm) diameter front, 12.8" (326 mm) diameter rear-ventilated brake discs with R logo on calipers		•	XK ALUMINUM LUXURY PACKAGE^{3,4}		
Front seat whiplash reduction system	•	•	20" Senta alloy wheels	•	
Height-adjustable front safety belt anchorages (coupe only)	•	•	Adjustable seat bolsters	•	
Hydraulic Brake Assist (HBA)	•	•	Heated leather steering wheel	•	
Lower Anchors and Tethers for CHildren (LATCH) child-seat-tethered anchorages	•	•	Leather gearshift knob	•	
Passive Brake Booster	•	•	Leather instrument panel	•	
Rollover Protection System featuring two automatically deployable hoops (convertible only)	•	•	Power-folding exterior mirrors	•	
Seat belt pretensioners (driver and front passenger)	•	•	Soft-grain leather 16-way power seats (includes 4-way power lumbar support)	•	
Tire pressure monitoring system	•	•	Soft-grain leather door panel insert	•	
Trac Dynamic Stability Control (Trac DSC) with Traction Control (TC)	•	•	Soft-grain leather interior	•	
Unique supercharged-tuned Trac Dynamic Stability Control (Trac DSC) with Traction Control (TC)		•	PREMIUM SOUND PACKAGE		
SECURITY			Alpine® Premium Dolby® Pro Logic® II ⁵ 525-watt surround sound system	•	•
Anti-theft engine immobilizer	•	•	SIRIUS® Satellite Radio ^{6,6}	•	•
Lockable glove box with electronic valet lockout	•	•	TECHNOLOGY PACKAGE		
Perimeter sensing and sounder	•	•	Active Front Lighting (AFL)	•	
Phosphorescent emergency release in trunk	•	•	Adaptive Cruise Control (ACC) with Forward Alert	•	
Remote central locking with drive-away locking feature	•	•			
2008 XK/XKR OPTIONS			• Standard • Optional		
Adaptive Cruise Control (ACC) with Forward Alert		•			
Burl Walnut veneer finish (available on select interiors – see paint information)	•	•			
Satin Poplar veneer finish (available on select interiors – see paint information)	•	•			

¹ Safety belts constitute the primary protection system for drivers and passengers in collisions. The airbag Adaptive Restraint Technology System (A.R.T.S.) is a supplement to the safety belts. Although airbags provide additional protection, airbags alone are not sufficient. Always wear your safety belt and properly secure children under 12 years old in the back seat away from airbags. Never place an infant seat in the front seat.

² Requires Luxury Package

³ Special order only

⁴ Not available in Canada

⁵ Dolby and Pro Logic trademarks are the property of Dolby Laboratories

⁶ Subscription required

ALLOY WHEELS



18" VENUS



19" JUPITER



19" CARELIA



19" CHROME SABRE



20" SENTA





THE COMPLETE JAGUAR EXPERIENCE. Buying a JAGUAR may be thrilling, *but it's the connection with car and company* during the ownership period following that will impress you most. This is the result of the very *intentional* support provided to JAGUAR drivers. As one of these favored individuals, here are things you can expect:

TOTAL CARE

Seamless support for your new XK, so you can relax and drive. A combination of vehicle warranty, paint and corrosion protection, complimentary maintenance and JAGUAR ASSISTANCE.

WARRANTY

JAGUAR CARS offers a comprehensive, 4-year/50,000-mile (80,000-kilometer) New Vehicle Limited Warranty¹ as well as a 6-year/unlimited mileage Corrosion Protection Limited Warranty.

SERVICE & ASSURANCE

Complimentary maintenance further enhances your JAGUAR driving experience. Simply bring your JAGUAR to an authorized JAGUAR dealer, and the first required maintenance will be performed at no charge within your first year of ownership or 12,500 miles (20,000 kilometers), whichever comes first. Please refer to your vehicle's scheduled maintenance program for more information.

JAGUAR AUTO CLUBS

JAGUAR clubs across Canada, the U.S. and Mexico serve as nerve centers for enthusiasts. With 64 affiliated chapters and over 6,000 members, these independent clubs sponsor wonderful driving tours and social events of all kinds. And if you feel competitive, rally and slalom events are also organized. To find the club nearest you, visit JCNA.COM or call 1.888.CLUBJAG.

JAGUAR ASSISTANCE

Handled by JAGUAR-trained specialists, this incident management program provides complimentary towing service, jump-starts, lockout assistance, gasoline delivery, tire changes and trip routing help, 24/7. Just call 1.800.4.JAGUAR.²

LOCAL DEALERS

Your local dealer is JAGUAR's partner both in bringing you thrilling vehicles and in making your buying and ownership experience pleasant. Introduce yourself. Find out what your dealership can do for you.

JAGUAR CREDIT

Available both for individuals and businesses, JAGUAR Credit offers leasing, financing and insurance packages that can be tailored to meet most needs, and will raise customer confidence and satisfaction to levels very nearly as pleasing as the feel of your new vehicle. Ask your dealer for details, or check JAGUARCREDIT.COM.

JAGUARUSA.COM/JAGUAR.CA

Visit JAGUAR's official web site to access a dealer locator, car configurator, price lists, model comparisons, and enthusiast links to Jaguar Clubs of North America and Jaguar Conservation Trust. Also register for owner e-newsletter periodic updates.

¹See your Jaguar dealer for complete details.

²All elements of Jaguar Assistance are available only while your Jaguar Warranty is in effect.

IMPORTANT NOTICE

Jaguar Cars is constantly seeking ways to improve the specification, design and production of its vehicles, and alterations take place continually. While every effort is made to produce up-to-date literature, this brochure should not be regarded as an infallible guide to current specifications, nor does it constitute an offer for the sale of any particular vehicle.

ENVIRONMENTAL NOTICE

Jaguar Cars has a vision of being among the world's leading companies in demonstrating progress toward sustainability. We aim to do this by contributing to a better quality of life for communities affected by the design, manufacture, use and disposal of Jaguar cars. We believe that playing a supportive role in the communities in which we operate is a privilege, not an obligation. Corporate citizenship goes to the very heart of our company. It is Jaguar's policy to continually improve its high environmental standards in all areas of business activity. That is why what you are now reading is printed on partially recycled paper.







JAGUARUSA.COM

JAGUAR.CA

07|07