



4 C

# PURE MAGNETISM

THE VERY DESIGN THAT SO BEAUTIFULLY MINIMIZES DRAG ALSO MANAGES TO CREATE AN INTENSE, MAGICAL PULL; ALL EYES ARE HELPLESSLY DRAWN TO IT. PERFECTLY EMBODYING THE RACING AND CRAFTSMANSHIP LEGACY OF ITS MAKER, THE ALFA ROMEO 4C PERFORMS EXACTLY AS IT VISUALLY PROMISES: BEHIND ITS WHEEL, CONNECTIONS AMONG DRIVER, ROAD AND CAR COULDN'T BE STRONGER.



20  
19



## *Contents*

<b>2</b>	INTRODUCTION
<b>5</b>	HISTORY
<b>6</b>	ENGINEERING
<b>8</b>	PERFORMANCE
<b>14</b>	STYLE
<b>18</b>	4C SPIDER ITALIA
<b>19</b>	FEATURES
<b>23</b>	WHEELS
<b>25</b>	EXTERIOR COLORS
<b>26</b>	INTERIOR FABRICS
<b>29</b>	MERCHANDISE

# *From a long line of sensational*

For more than one hundred years, Alfa Romeo has earned its high-performance reputation through daring innovation. With a proven record of European and World Championships, those risks proved valuable on both track and street.

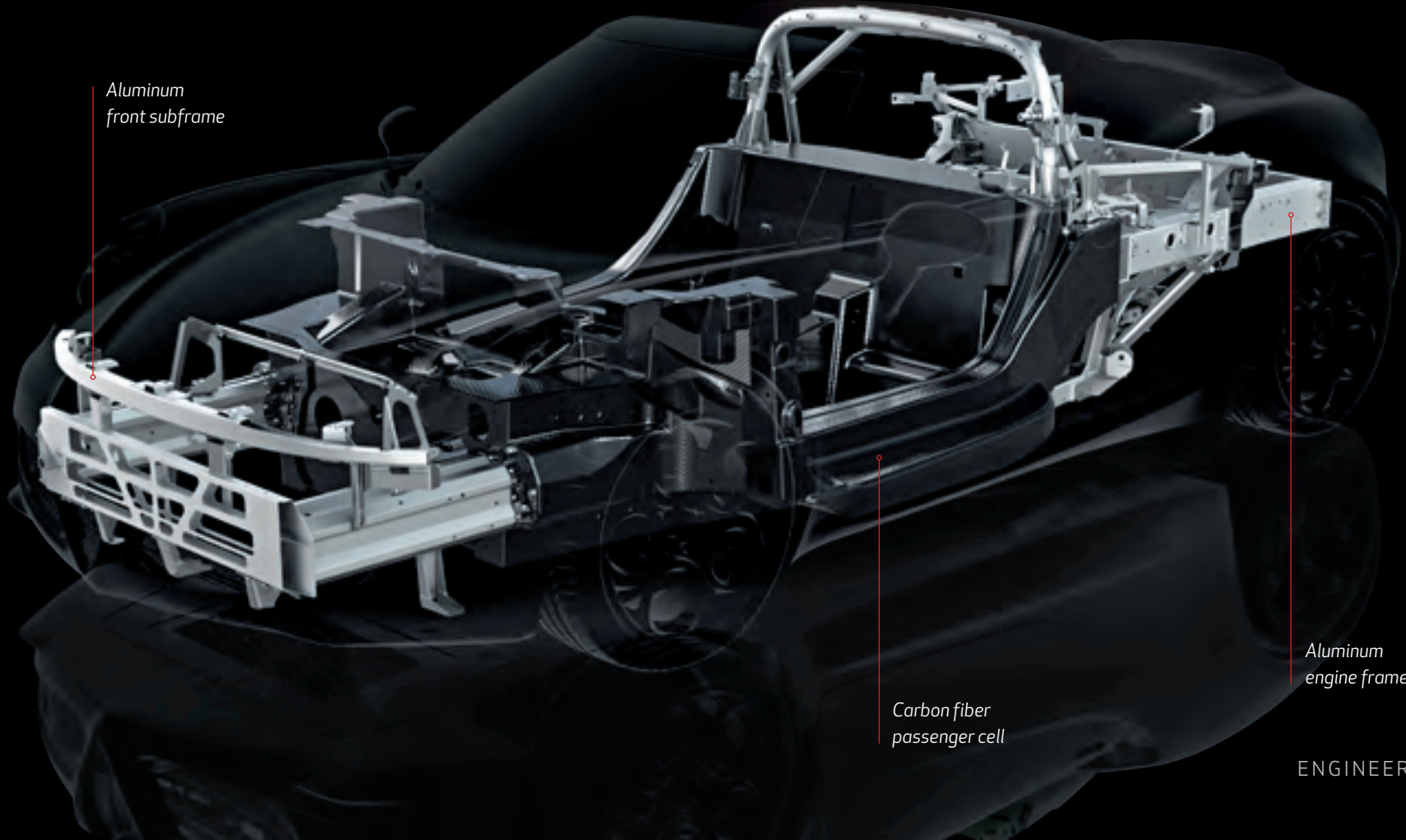


1967

2019



# *Elements of great performance*



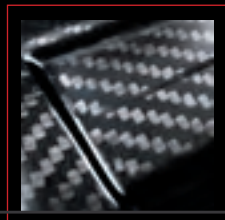
Aluminum  
front subframe

Carbon fiber  
passenger cell

Aluminum  
engine frame

Designed in collaboration with the world's foremost racing chassis designers, the Alfa Romeo 4C Spider is innovative at its very core. Supercar DNA runs throughout, including a carbon fiber monocoque chassis, mid-engine design and aluminum subframes.

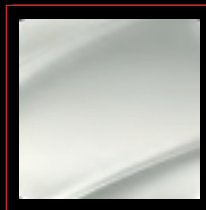
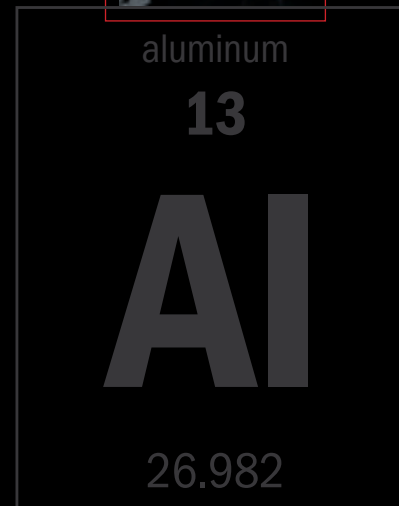
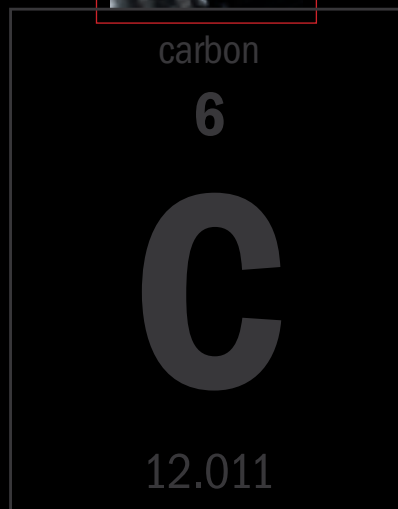
It begins with the solid foundation of a carbon fiber monocoque chassis. Laid by hand, this carbon fiber is three times stronger and seven times lighter than conventional steel. Front and rear aluminum subframes combine strength with weight-saving technologies. Sheet Moulded Compound (SMC) is used for the outer body and is 20% lighter and more stable than steel — and also resists corrosion. The end result of these advanced technologies is incredible strength and remarkable weight efficiency — the overall curb weight is under 2,500 lb.



Carbon fiber passenger cell



Aluminum engine frame



Composite body shell






## *A competitive edge enhanced*

**OPTIMIZED AIRFLOW** Advanced engine technology maximizes torque at low engine speeds and delivers more power in response to driver input. The control unit encourages fresh airflow from intake to exhaust. This improved circulation increases combustion efficiency and turbine speed while reducing turbo lag.

**TURBOCHARGER** A new-generation turbocharger and a pulse converter exhaust manifold use pressure waves to boost torque at low engine speeds. The microcast steel manifold and turbine operate at very high temperatures (over 1,000°F) — enabling low fuel consumption on medium-/high-speed highway trips. The wastegate valve adjusts turbo pressure control logic to suit driving conditions, minimizing pumping losses and maximizing efficiency.





**AFTER-RUN PUMP** The 4C uses an automatic cool-down system to protect its turbocharger. To prevent stagnating oil and damaging residue, Alfa Romeo has introduced an after-run pump. This electric pump is automatically controlled by the Electronic Control Unit (ECU) and keeps oil circulating through the turbocharger until it has cooled sufficiently.

**ALFA TWIN-CLUTCH TRANSMISSION (TCT)** The ALFA TCT 6-speed automatic transmission with a twin clutch and paddle shifters combines the instant power of a sequential shift with all the convenience of an automatic. Specially modified for use on the Alfa Romeo 4C, it features control software that ensures the fastest possible gearshifts under all conditions — as quick as 130 milliseconds. Gearshifts are more aggressive in the Dynamic and Race modes, yet are completed in the smoothest way possible on bends to avoid reducing stability.

*Perforated, cross-drilled,  
self-ventilated discs, 12 x 1.10 in*

*MacPherson  
rear suspension*

*Perforated, cross-drilled,  
self-ventilated discs, 11.5 x 0.87 in*

# *Be one with the road*

**The 4C boasts an advanced ride control system, giving every driver extra street smarts.**

Race-derived technical solutions optimize performance to deliver unrivaled driving pleasure. At the front, the Alfa Romeo 4C features a double-wishbone configuration that gives direct and unfiltered feedback from the road. At the rear, the advanced MacPherson suspension ensures superb road-holding and driving fun, even during the most extreme maneuvers. Both front- and rear-suspension systems are made from aluminum and high-strength steel. The high-performance braking system features perforated, self-ventilated discs and Brembo® brake calipers for supreme stopping power. And to ensure maximum grip and prevent skidding under all conditions, the 4C is fitted with staggered wheels: 17-inch and 18-inch or 18-inch and 19-inch, with larger tires on the rear for the best possible handling.



# A commanding performance

Numerous features hone and improve each trip in 4C. The four-mode Alfa DNA Drive Pro Mode Selector creates a customized vehicle experience according to driving conditions or desired vehicle responsiveness: choose from its Dynamic, Natural, All-Weather or Race settings.



**RACE** This is the most extreme performance mode for 4C. By minimizing the interventions of electronic systems, it leaves the driver in complete command. Electronic Stability Control (ESC)<sup>1\*</sup> only intervenes during aggressive driving. Anti-Slip Regulation (ASR) is deactivated under acceleration and braking, while the Alfa Romeo electronic differential control system remains active for fast exits from bends.



**NATURAL** Designed for everyday use, its gearshift parameters are configured for maximum comfort and smoothness. In this mode, Auto-Up and Auto-Down functions shift at just the right engine speed. The Alfa Romeo electronic differential only cuts in during a significant loss of grip.



**DYNAMIC** True to its name, this mode helps deliver great driving performance with near-instant accelerator response and reduced gearshift times of up to 25%. The ESC<sup>1</sup> system only intervenes when drift angles put the car at risk.



**ALL-WEATHER** This mode ensures maximum safety under adverse weather conditions with gentle accelerator response. The ASR system prevents skidding by modifying power to match road speed when there is loss of grip.

\* About this brochure: all disclaimers and disclosures can be found on page 31.

The 4C is also fitted with Launch Control for masterful, high-performance standing starts. Launch Control is activated by pressing the brake pedal while pushing the accelerator pedal all the way down and squeezing the paddle on the left of the steering wheel. As soon as you release the brake, the system automatically controls the transmission, traction and power to maximize acceleration.







## *The influence of high culture*

Perhaps it's no coincidence that Alfa Romeo was born in Milan, Italy — the fashion capital of the world. It's a place that understands that the heart must have a say in even the most practical decisions.

The Alfa Romeo 4C Spider continues the Alfa Romeo tradition of performance-oriented lines and proportions. Inspired by the 1967 Tipo 33 Stradale, considered by many to be one of the most beautiful cars ever made, the 4C is just as shapely and offers the classic Alfa Romeo V-shaped "plunging neckline" Scudetto grille. Front and rear overhangs are dramatically short, and dimensions are aerodynamically and dynamically optimized. The famous Alfa Romeo badge confirms what all these visual cues are saying: this is a legitimate sports car.









## *4C Spider Italia*

The Italian design and craftsmanship tradition of Alfa Romeo is further accentuated in this limited edition model. Features unique to the 4C Spider Italia are Misano Blue Metallic paint, a front air intake in Piano Black and a rear diffuser in Piano Black. Special edition signatures include a "Spider Italia" graphic on the side panel, an aluminum dashboard insert with "4C Spider Italia" logo and a numbered badge certifying its place in production.

## STANDARD

(Select Equipment)

### MECHANICAL

1750 Turbocharged I4  
237 hp/258 lb-ft torque engine  
6-speed automatic twin-clutch  
transmission (TCT)

### EXTERIOR

17-/18-inch Bright  
aluminum wheels  
205/45R17, 235/40R18 Pirelli®  
P Zero™ AR 3-season tires  
Silver brake calipers  
Halogen projector headlamps  
LED daytime running lamps (DRLs)  
and taillamps  
Body-color mirrors with power adjust,  
defrost and manual folding  
Dual-chrome exhaust tips  
Black removable, storable roof  
Carbon fiber windshield surround  
Front fascia with body-color vents  
Black halo

### INTERIOR

Black leather-trimmed seats with Red  
accent stitching  
Black leather-wrapped flat-bottom  
steering wheel  
Leather-wrapped dashboard and door  
panels with accent stitching  
Steering-wheel-mounted paddle shifters  
Aluminum pedals and footrest  
Console-mounted electric gear selector  
Front floor mats with embroidered logo

### TECHNOLOGY

Back-up camera<sup>2</sup>  
Rear Park Sensors<sup>2</sup>  
Cruise Control  
Sport-tuned suspension  
Alfa DNA Pro Drive Mode Selector  
7-inch full-color Thin Film Transistor (TFT)  
AM/FM/HD Radio, iPod®, CD, Bluetooth®  
Air conditioning system  
Remote keyless entry  
Electronic differential

### TECHNOLOGY (continued)

Air bags<sup>3</sup> — driver and front-passenger,  
side front-door and driver inflatable  
knee bolster

### OPTIONS/PACKAGES

Carbon Fiber Interior Trim Group  
Carbon fiber halo  
Front fascia with carbon fiber vents  
Bi-xenon headlamps  
Red brake calipers  
Black brake calipers  
Yellow brake calipers  
Akrapovič dual-mode exhaust  
Black leather-trimmed seats with  
Yellow accent stitching  
Red leather-trimmed seats with Black  
accent stitching  
Tobacco leather-trimmed seats with  
Brown accent stitching

### OPTIONS/PACKAGES (continued)

Black leather-trimmed/racing microfiber  
seats with Red or Yellow  
accent stitching  
Alpine® Premium Audio System  
Alfa Romeo battery charger  
Alfa Romeo Red car cover  
Race-tuned suspension  
Carbon fiber mirrors  
Carbon fiber Italian flag mirrors  
Performance flat-bottom steering  
wheel, leather-wrapped with  
microfiber insert  
18-/19-inch Bright 5-hole  
aluminum wheels  
18-/19-inch Dark 5-hole  
aluminum wheels  
18-/19-inch Bright fan-spoke  
aluminum wheels  
18-/19-inch Dark fan-spoke  
aluminum wheels  
Pirelli P Zero Performance  
AR racing tires





Incredibly, there are ways to rev up 4C Spider even more. The available Akrapovič dual-mode center-mounted exhaust with carbon fiber surround makes a memorable audio and visual statement. The race-inspired carbon fiber mirror covers signal a deep passion for motoring shared by both the owner and Alfa Romeo. Striking Bi-xenon projector headlamps serve to heighten 4C looks and the surrounding view, with sleek carbon fiber inserts and advanced lighting capability.

## TECHNICAL SPECIFICATIONS

ENGINE	
Type	All-aluminum 1750 turbocharged 4-cylinder
Position	Mid-engine
Orientation	Transverse
Displacement (cc)	1742
Maximum power (hp)	237
Maximum torque (lb-ft at rpm)	258 between 2,200 – 4,250
DRIVING-MODE SELECTOR	
Type	Alfa DNA Pro Drive Mode Selector with Race mode
Positions	All-Weather, Natural, Dynamic, Race
TRANSMISSION	
Gearbox	ALFA TCT with dry dual clutch, paddle controls and Launch Control
Number of gears	6 + R
Drive	Rear
Differential	Electronic
CHASSIS	
Type	Carbon fiber monocoque
Front suspension	Double-wishbone
Rear suspension	MacPherson
Front brakes (mm)	Dual-cast, cross-drilled, self-ventilated 305 x 28 discs Brembo® fixed 4-piston calipers
Rear brakes (mm)	Cross-drilled, self-ventilated 292 x 22 discs
Standard front tires	205/45R1788Y XL 3-Season Performance
Standard rear tires	235/40R1895Y XL 3-Season Performance
STEERING	
Steering box	Rack and pinion
PERFORMANCE	
Acceleration 0 – 60 mph (secs)	4.1
Top speed (mph)	160
Maximum deceleration under braking (g)	1.25
Maximum lateral acceleration (g)	1.1
CAPACITIES — WEIGHTS	
Curb weight (EPA) (lb)	2,487 4C Spider
Fuel tank (gal)	10.5
FUEL ECONOMY	
EPA est. city/hwy/combined (mpg)*	24 / 34 / 28
DIMENSIONS	
Number of seats	2
Length (inches)	157
Width (inches)	73.5
Height (inches)	46.7 4C Spider
Wheelbase (inches)	93.7
Luggage compartment capacity (cu ft)	3.7

\*Based on 2018 EPA-estimated ratings. Actual mileage may vary.





Alfa Romeo 4C design is a standout in any setting, starting with surroundings that were created specifically for its driver. Front and center, the 4C informs drivers with clear and precise driving stats from its full-digital instrument cluster — catching the eye with a Thin Film Transistor (TFT) display and available carbon fiber cluster surround. Command is in your hands with the available Sport steering wheel in leather with microfiber insert and Red stitching. Available Red leather-trimmed bucket seats are perfectly positioned to enlist the four-position Alfa DNA Pro Drive Mode Selector. Accentuating its exquisite lines and protecting it at the same time, the custom-cut Red car cover with Alfa Romeo 4C logo makes a practical yet gorgeous addition.



Silver brake calipers  
Standard



Yellow brake calipers  
Available



Red brake calipers  
Available



Black brake calipers  
Available





17-/18-inch Bright aluminum  
Standard



18-/19-inch Dark 5-hole aluminum  
Available



18-/19-inch Bright 5-hole aluminum  
Available



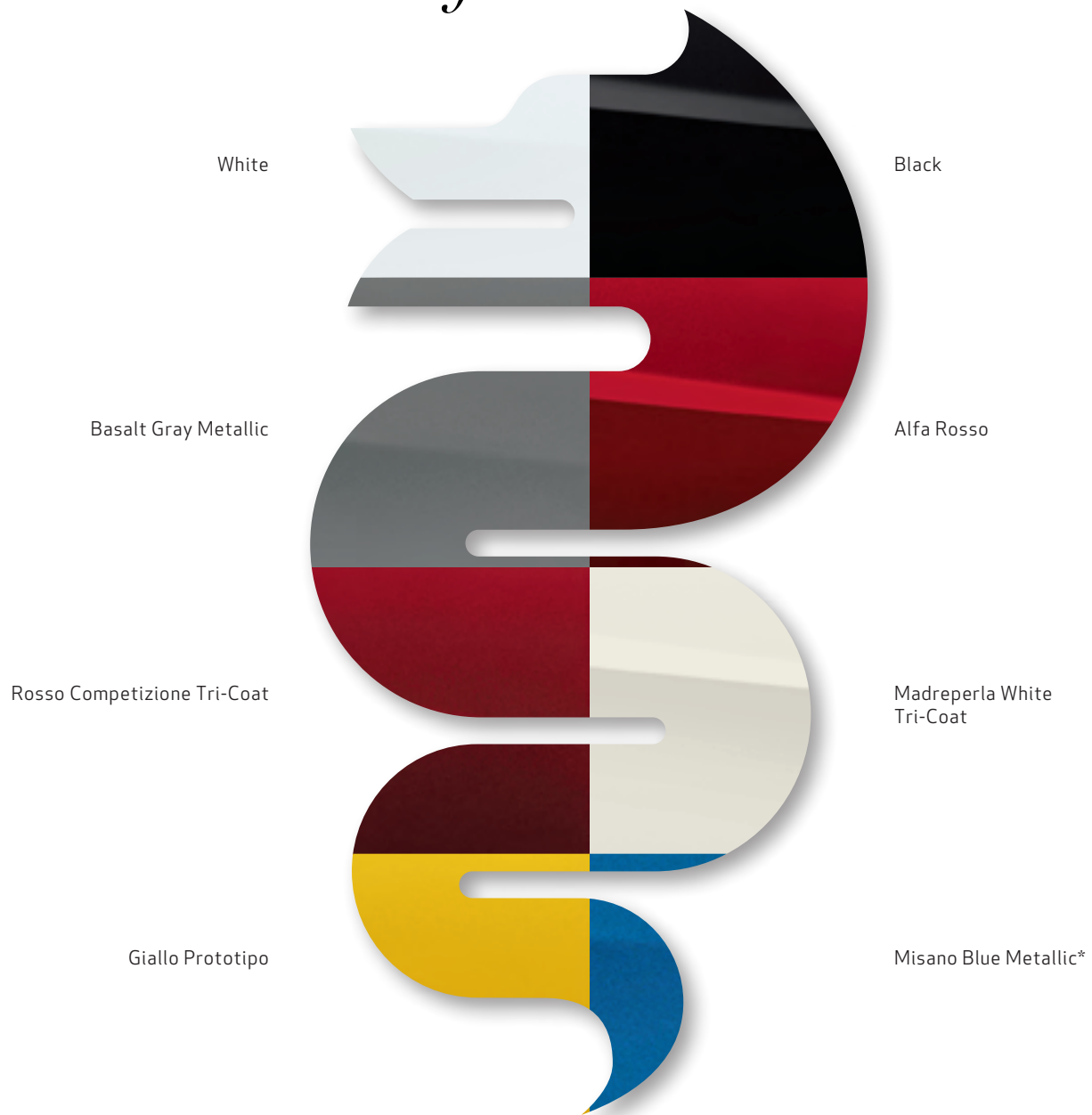
18-/19-inch Bright fan-spoke aluminum  
Available



18-/19-inch Dark fan-spoke aluminum  
Available



# *The hues of 4C*



Black leather trim with Red accent stitching  
Standard

Black leather trim with Yellow accent stitching  
Available



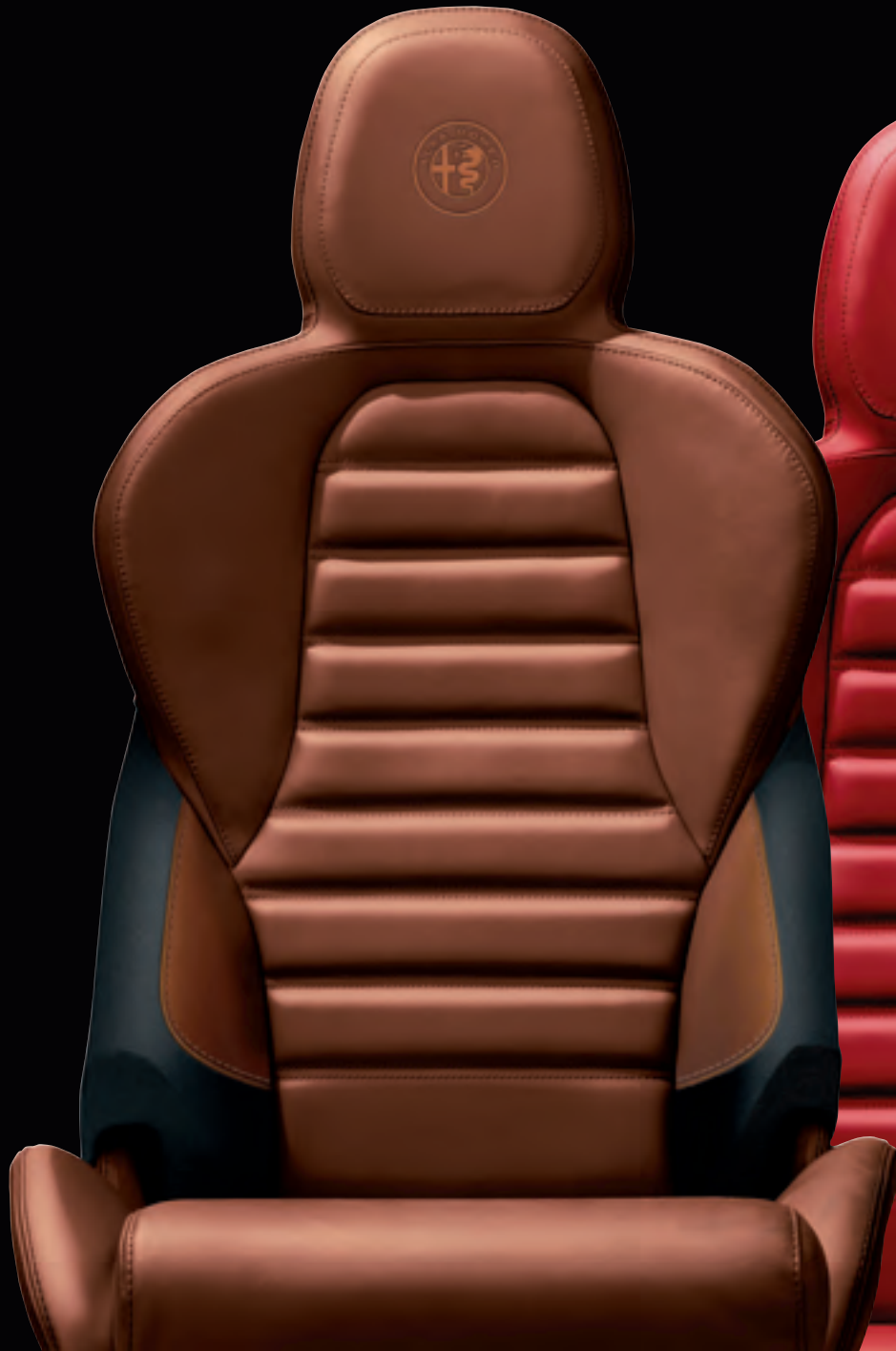
Black leather trim and microfiber  
with Red accent stitching  
**Available**



Black leather trim and microfiber  
with Yellow accent stitching  
**Available**



Black/Tobacco leather trim  
with Dark Brown accent stitching  
**Available**



Red leather trim  
with Black accent stitching  
**Available**





Leather and  
Wool Jacket



Backpack



Harman Kardon®  
Wireless Headphones

## BEYOND THE WINNER'S CIRCLE

The unique aesthetic that is Alfa Romeo, derived from over a century's worth of automotive innovation and finish-line wins, now extends beyond its four extraordinary wheels. An exclusive selection of professional, active, travel and home accessories feature the Alfa Romeo logo along with signature carbon fiber and leather design cues. Enthusiasts, start your collection.

[shopalfaromeousa.com](http://shopalfaromeousa.com)

Fleece Jacket







1) Always drive carefully, consistent with conditions. Always wear your seat belt and obey traffic laws. 2) Always look before proceeding. An electronic drive aid is not a substitute for conscientious driving. Always be aware of your surroundings. 3) Always sit properly in designated seating positions with seat belts securely fastened at all times.

©2018 FCA US LLC. All Rights Reserved. Alfa Romeo and Alfa Romeo 4C are registered trademarks of FCA Group Marketing S.p.A., used with permission.

Alpine and the Alpine logo are registered trademarks of Alpine Electronics, Inc. Bluetooth is a registered trademark of Bluetooth SIG, Inc. Brembo is a registered trademark of Freni Brembo SpA. Facebook and logo are registered trademarks of Facebook, Inc. Harman Kardon (logo) is a registered trademark of Harman International Industries, Inc. Instagram is a registered trademark of Instagram, Inc. iPod and iTunes are registered trademarks of Apple Inc. MacPherson is a registered trademark of MacPherson, Inc. Pirelli is a registered trademark and P Zero is a trademark of Pirelli Tyre S.p.A. The Twitter logo is a service mark of Twitter, Inc.

This brochure is a publication of FCA US LLC. All product illustrations and specifications are based upon current information at the time of publication approval. FCA US LLC reserves the right to make changes from time to time, without notice or obligation, in prices, specifications, colors and materials, and to change or discontinue models which are considered necessary to the purpose of product improvements or for reasons of design and/or marketing.



@alfaromeousa