

2019 NAUTILUS





# THE LUXURY EXPERIENCE REDEFINED

Time is the ultimate luxury, which is why Lincoln is dedicated to helping you spend more of yours the way you prefer. As a Nautilus driver, you'll be able to access remote vehicle features, contact a Lincoln Concierge, and find and pre-pay for parking in select cities, easily with the Lincoln Way™ app on your mobile device.<sup>1</sup> With complimentary Lincoln Pickup & Delivery,<sup>2</sup> you can continue seamlessly through your day while we service your vehicle.<sup>2</sup> Plus, Lincoln is working with CLEAR<sup>®</sup> to help you soar through lines at the airport.<sup>3</sup> It's all part of an exclusive collection of services we call the Lincoln Way – benefits designed to help uncomplicate your life and make each day more effortless.

The sleek new Nautilus greets you with the signature Lincoln Star mesh grille flanked by advanced LED multi-projector headlamps.<sup>4</sup> Dynamic LED signature lighting<sup>4</sup> flows gracefully outward upon your approach. Luminous welcome mats appear on the ground. Ambient lighting<sup>4</sup> beautifully accents the interior, and autofold<sup>4</sup> sideview mirrors deploy as you relax into your seat. Designed to encourage exploration, the 2019 Lincoln Nautilus is poised for your next adventure.

<sup>1</sup>Lincoln Way app is available via download and compatible with select smartphone platforms. Learn more at [lincolnway.com](http://lincolnway.com). Message and data rates may apply. <sup>2</sup>Lincoln Pickup & Delivery is valid for owners of 2017 or newer model-year Lincoln vehicles. Service available for retail and warranty repairs. Mileage limitations may apply. See dealer for details. <sup>3</sup>CLEAR is currently available to U.S. citizens and legal permanent residents with valid photo I.D. CLEAR Program eligibility for new retail purchases of 2018 and newer model-year Lincoln vehicles (12 months on Lincoln Black Label models; 6 months on all other Lincoln models). Full CLEAR enrollment, including biometrics, required to be completed within 120 days of vehicle delivery. <sup>4</sup>Available feature.





# MANY INSPIRING JOURNEYS AWAIT



Wherever life's opportunities lead, you'll be ready to make the most of them in the new Nautilus. Designed to help you revitalize and recharge between outings, this soothing space features graceful lines, luxurious materials and rejuvenating amenities.

Listen to your favorite playlist or podcast, without any wires, while your phone rests securely on the wireless charging pad<sup>1,2</sup> inside the media bin. Configure the gracefully curved 12.3" digital instrument cluster using controls on your hand-stitched, Wollsdorf leather-wrapped,<sup>1</sup> heated<sup>1</sup> steering wheel. The frameless rearview mirror offers you an unencumbered scene, while the front seats wrap you in warmth from their heated side bolsters and seat cushions. Choose the Ultra Comfort front seats<sup>1</sup> with 22-way power adjustability – more than any other vehicle in the class<sup>3</sup> – including power thigh extenders and head restraints, plus ventilated settings and Active Motion<sup>®</sup> massage functionality. They're wonderful for helping reduce muscle fatigue in your upper legs and lower back after a long day of driving. Yet another reason to make Nautilus the vehicle for all your future endeavors.



<sup>1</sup>Available feature. <sup>2</sup>Available Qi wireless charging may not be compatible with all mobile phones. <sup>3</sup>Class is Luxury Midsize Utilities under \$57,000 based on Lincoln segmentation.







#### DISCOVER UNCOMPROMISING COMFORT

Nautilus is designed to be your sanctuary, from the sound dampening materials beneath its plush carpeting to the acoustic-laminate glass in its front doors and windshield. The artisans of Lincoln even utilize the audio systems in their quest for quiet. By sending precisely chosen sound waves through your speakers, Active Noise Control helps cancel out unwanted noise and refines engine sounds.

You have an array of sumptuous interior palettes from which to choose, including this rich Coffee-colored luxury leather<sup>1</sup> and Espresso Ash Swirl open-pore wood<sup>1</sup> pairing. Dramatic, flowing suspension bridge-inspired styling connects the instrument panel and center console while creating space for your travel essentials. And it's easy to keep your devices charged with a wireless charging pad,<sup>1,2</sup> four 12V powerpoints, 2 smart-charging USB ports, and a 110V power outlet.<sup>1</sup>

Your passengers can enjoy the most 2nd-row leg room in the class, while taking advantage of the Lincoln Play with DVD rear-seat entertainment system.<sup>1</sup> Lincoln Play lets them stream content from their compatible devices on vibrant 10" screens securely mounted to the front seat backs. Content can also be accessed via SD card, HDMI input, or USB device.

To access the spacious rear cargo area, simply kick your foot beneath the rear bumper with your key fob tucked away in a pocket or bag. The standard hands-free liftgate effortlessly opens to reveal a flat load floor with both sides of the EasyFold<sup>®</sup> 60/40 split rear seat folded down. After you've loaded your cargo, close the liftgate with the press of a button or another kick.



<sup>1</sup>Available feature. <sup>2</sup>Available Qi wireless charging may not be compatible with all mobile phones.





### VOICE-ACTIVATED SIMPLICITY

SYNC 3 makes it easy to listen to your favorite music, handle phone calls and more, while you're on the go.<sup>1</sup> It all works through simple voice commands and the controls on your steering wheel. The system also includes Apple CarPlay™ compatibility<sup>2</sup> and Android Auto™ compatibility.<sup>2</sup>

SYNC 3 AppLink<sup>®3</sup> gives you voice control of compatible mobile apps on your connected phone, too. You can use it with the Waze™ community-based traffic and navigation app<sup>3</sup> on your iPhone.® Plus, Nautilus now works with Amazon Alexa in 2 convenient ways. While inside the vehicle, you can ask Alexa to play music, listen to audiobooks, check the weather, control smart home devices and much more, through the Lincoln+Alexa app.<sup>4</sup> While at home, you can use the Lincoln Way Alexa Skill<sup>4</sup> on your Alexa enabled device to remotely start your vehicle and climate control system, lock and unlock the doors, and more.



SiriusXM<sup>®</sup> gives you music, sports, comedy, news and more – in your Nautilus and on the go with a 6-month All Access trial subscription.<sup>5</sup> Plus, you'll enjoy a 6-year prepaid subscription<sup>5</sup> to SiriusXM Traffic and Travel Link<sup>®</sup> services – the longest of any automobile manufacturer<sup>6</sup> – with the Voice-Activated Touchscreen Navigation System.<sup>7</sup> You can use it to check fuel prices and station locations, taking advantage of all the latest traffic and travel information, along with vivid 3-D maps and pinch-to-zoom capability, on the large touchscreen within easy reach.



### EXCLUSIVE AUDIO

Lincoln is the only automaker to offer Revel<sup>®</sup> and Revel Ultima<sup>®</sup> audio systems.<sup>7</sup> They're expertly engineered to deliver a level of precision and musical accuracy you won't just hear – you'll feel. It's as if you're seated in the "Audience" or up "On Stage" when using the personalized listening modes. Outstanding, multi-dimensional sound in every seat is courtesy of advanced cabin correction tuning, QuantumLogic<sup>®</sup> Surround sound technology, and Revel Waveguides. Revel Ultima features 19 speakers and patented Clari-Fi™ music restoration technology that enhances satellite radio, streaming services, MP3s and other digital sources – for clear, crisp, wide, dynamic sound.

### QUICK STREAMING

Passengers can surf the web, stream movies and music, and more while you're driving, and up to 50' away from the vehicle when it's parked, using Lincoln Connect.<sup>TM8</sup> It's an integrated 4G LTE Wi-Fi hotspot that can host up to 10 devices at a time. For help making the most of this, or any other Nautilus feature, remember your Lincoln Concierge is available 24/7.

<sup>1</sup>Don't drive while distracted. Use voice-operated systems when possible; don't use handheld devices while driving. Some features may be locked out while the vehicle is in gear. Not all features are compatible with all phones. <sup>2</sup>Requires phone with active data service and compatible software. SYNC 3 does not control 3rd-party products while in use. 3rd parties are solely responsible for their respective functionality. <sup>3</sup>Commands may vary by phone and AppLink software. <sup>4</sup>Certain Alexa functionality is dependent on smart phone and home technology. <sup>5</sup>After your trial period ends, SiriusXM audio and data services each require a subscription sold separately, or as a package, by Sirius XM Radio Inc. See SiriusXM Customer Agreement for complete terms at [www.siriusxm.com](http://www.siriusxm.com). All fees and programming subject to change. Trial subscriptions not available in AK and HI. <sup>6</sup>Source: April 2018 analysis of satellite data service offers by SiriusXM to automobile manufacturers in the U.S.A. <sup>7</sup>Available feature. <sup>8</sup>See footnote 2 on the page titled "Standard Features," and your Lincoln Dealer for details.





# SPIRITED IN ITS RESPONSE

Twin-Turbocharged 2.7-liter V6<sup>1</sup>  
335 hp<sup>2</sup>/380 lb.-ft. torque<sup>2</sup>

Turbocharged 2.0-liter I-4  
250 hp<sup>2</sup>/280 lb.-ft. torque<sup>2</sup>



Nautilus launches with an all-turbocharged engine lineup, putting plenty of power and torque at your command. Select the 335-horsepower<sup>2</sup> Twin-Turbocharged 2.7-liter V6<sup>1</sup> or the standard Turbocharged 2.0-liter I-4. Either way, you'll benefit from the combination of turbocharging, direct fuel injection, and twin-independent variable camshaft timing (Ti-VCT).

An 8-speed SelectShift<sup>®</sup> automatic transmission – all-new for Lincoln this year – is paired with both engines. Designed to provide the right gear at the right time, the 8-speed transmission contributes to the driveability, smoothness and refinement of every Nautilus. Auto Start-Stop Technology can shut the engine off when the vehicle comes to a complete stop to help you save fuel. Equipped with the 2.7-liter,<sup>1</sup> Nautilus has an EPA-estimated rating of 27 hwy mpg.<sup>3</sup>

Intelligent all-wheel drive (AWD)<sup>1</sup> goes beyond maximizing traction. Designed to help save fuel, new AWD disconnect technology operates seamlessly behind the scenes. The system can reconnect when starting from a complete stop, if front wheelslip is detected, and in other moments when AWD capability is beneficial.

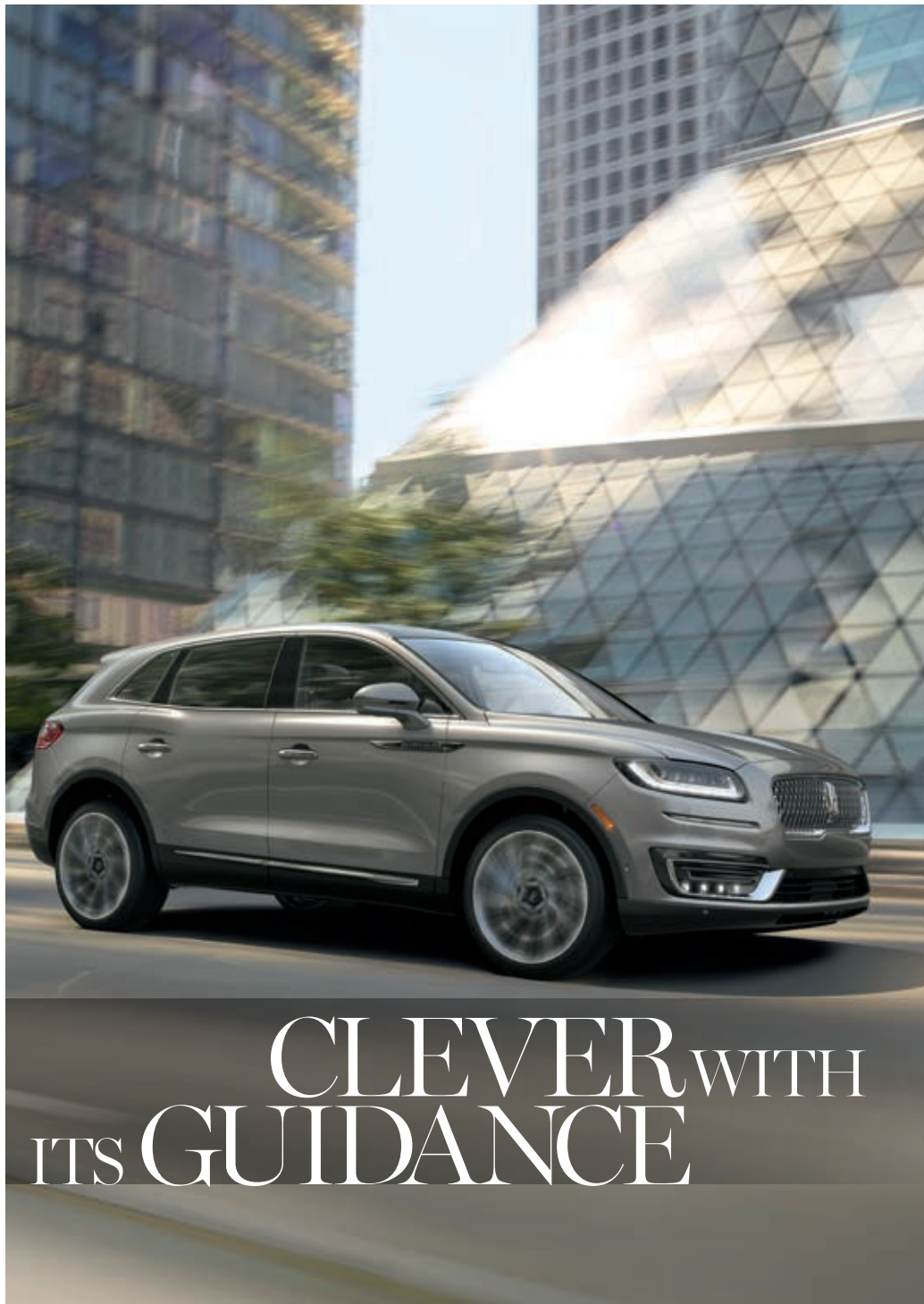
Imagine yourself gliding effortlessly along – at peace with your surroundings. Adaptive Suspension<sup>1</sup> can take you there by helping to isolate your Nautilus from road imperfections. Engage the Sport drive mode to enjoy tighter suspension tuning, firmer steering calibration, and more powerful engine sounds in the cabin – all while feeling steadfastly connected to your Nautilus and the road.

<sup>1</sup>Available feature. <sup>2</sup>Horsepower and torque ratings achieved with 93-octane fuel. <sup>3</sup>EPA-estimated rating of 20 city/27 hwy/22 combined mpg, 2.7-liter FWD. Actual mileage will vary.



Introducing the most comprehensive standard driver-assist technology collection Lincoln has ever offered: Lincoln Co-Pilot360™<sup>1</sup>

These smart features utilize a network of radar sensors and sophisticated cameras to help guide you through various scenarios. From backing out of a driveway or parking spot onto a busy street, to dealing with the fatigue of a long trip, Nautilus can help ease your drive.



<sup>1</sup>Driver-assist features are supplemental and do not replace the driver's attention, judgment and need to control the vehicle.





### Standard Lincoln Co-Pilot360™ features:<sup>1</sup>

#### **BLIND SPOT DETECTION WITH CROSS-TRAFFIC ALERT**

Helps warn of vehicles detected in blind spots while going forward and when slowly backing up

#### **PRE-COLLISION ASSIST WITH AUTOMATIC EMERGENCY BRAKING (AEB)<sup>2</sup>**

Also features Pedestrian Detection

#### **LANE-KEEPING SYSTEM WITH DRIVER ALERT**

Can help alert you if you start to drift out of your lane<sup>3</sup>

#### **REAR VIEW CAMERA**

Displays what's behind the vehicle when in Reverse

#### **AUTO HIGH-BEAM HEADLAMPS**

Can help increase your forward visibility

### Driver Assistance Package adds:<sup>1</sup>

#### **ADAPTIVE CRUISE CONTROL WITH STOP-AND-GO AND LANE CENTERING**

Can help maintain your distance and keep the vehicle centered<sup>4</sup>

#### **EVASIVE STEERING ASSIST**

Can help you avoid a slow/stopped vehicle detected ahead<sup>5</sup>

#### **ADAPTIVE STEERING**

Helps optimize steering response at all speeds

### Technology Package adds:<sup>1</sup>

#### **ENHANCED ACTIVE PARK ASSIST**

Helps you parallel park and back into perpendicular spots

#### **360-DEGREE CAMERA**

Offers a bird's-eye view of the vehicle and its surroundings, or a 180-degree front or rear view

#### **FORWARD SENSING SYSTEM**

Audible guidance for low-speed maneuvers



<sup>1</sup>Driver-assist features are supplemental and do not replace the driver's attention, judgment and need to control the vehicle. <sup>2</sup>Pre-Collision Assist with Automatic Emergency Braking (AEB) can detect pedestrians, but not in all conditions and does not replace safe driving. See owner's manual for system limitations. <sup>3</sup>Lane-Keeping System does not control steering. <sup>4</sup>Lane centering requires the driver's hands to be on the wheel, and is not designed to operate on tight radius curves such as highway ramps, or lanes that are abnormally wide or narrow. <sup>5</sup>Evasive Steering Assist does not control steering.







# THE LINCOLN WAY

LINCOLN

## PICKUP & DELIVERY

When it's time for service, you can simply schedule a Lincoln Pickup & Delivery™ appointment with the Lincoln Way™ app<sup>1</sup> or by phone. We'll handle the rest. We'll pick up your vehicle and deliver it back to you when service is complete.<sup>2</sup> In between, we'll provide a complimentary Lincoln loaner – so your time remains distinctly yours. Plus, we'll return your Lincoln washed and ready for your next journey.

## LINCOLN & CLEAR

Together, we're helping you put travel stress on standby. CLEAR® biometric technology allows members to bypass security lines at 30+ of the busiest airports and sports stadiums across the nation, getting them through security in about 5 minutes or less. As a 2019 Lincoln Nautilus owner, you and your spouse or significant other can enjoy a 6-month complimentary CLEAR membership.<sup>3</sup> Take your first step around the line by redeeming your Lincoln benefits with CLEAR.

## LINCOLN WAY APP

Downloading the Lincoln Way app<sup>1</sup> to your mobile device makes it easy to connect with us. The app lets you schedule Lincoln Pickup & Delivery, find fuel and compare prices, and even find, reserve and pre-pay for parking in select cities. Use it to contact a Lincoln Concierge, securely manage your Lincoln Automotive Financial Services account, and more. Lincoln Connect™<sup>4</sup> also works with the app to let you locate your vehicle, start it, and lock or unlock its doors from virtually anywhere. Combine it with the app and the Lincoln Way Alexa Skill<sup>5</sup> to remotely start your vehicle, and more, simply by speaking to your Amazon Alexa enabled device.

## LINCOLN CONCIERGE

You have a personal connection to the latest information about Lincoln vehicles, services and ownership benefits. Simply choose how you'd like to connect, and a highly trained Lincoln Concierge team member will help you explore Lincoln in the way that suits you best. Chat online at Lincoln.com. Reach us through the Lincoln Way app<sup>1</sup> Or call (800) 521-4140, anytime of the day or night.

<sup>1</sup>Available via download and compatible with select smartphone platforms. Learn more at [lincolnway.com](http://lincolnway.com). Message and data rates may apply. <sup>2</sup>Lincoln Pickup & Delivery is valid for owners of 2017 or newer model-year Lincoln vehicles. Service available for retail and warranty repairs. Mileage limitations may apply. See dealer for details. <sup>3</sup>CLEAR is currently available to U.S. citizens and legal permanent residents with valid photo I.D. CLEAR Program eligibility for new retail purchases of 2018 and newer model-year Lincoln vehicles (12 months on Lincoln Black Label models; 6 months on all other Lincoln models). Full CLEAR enrollment, including biometrics, required to be completed within 120 days of vehicle delivery. <sup>4</sup>See footnote 2 on next page titled "Standard Features," and your Lincoln Dealer for details. <sup>5</sup>Certain Alexa functionality is dependent on smart phone and home technology. Comparisons based on competitive models (class is Luxury Midsize Utilities under \$57,000 based on Lincoln segmentation), publicly available information and Lincoln certification data at time of release. Vehicles may be shown with optional equipment. Features may be offered only in combination with other options or subject to additional ordering requirements/limitations. Dimensions shown may vary due to optional features and/or production variability. Information is provided on an "as is" basis and could include technical, typographical or other errors. Lincoln makes no warranties, representations, or guarantees of any kind, express or implied, including but not limited to, accuracy, currency, or completeness, the operation of the information, materials, content, availability, and products. Lincoln reserves the right to change product specifications, pricing and equipment at any time without incurring obligations. Your Lincoln Dealer is the best source of the most up-to-date information on Lincoln vehicles.

2019 LINCOLN NAUTILUS  
[Lincoln.com](http://Lincoln.com)



## STANDARD FEATURES

### POWER AND HANDLING

8-speed SelectShift® automatic transmission  
Electric parking brake  
Electric Power-Assisted Steering (EPAS)  
Front-wheel drive (FWD)  
Power disc brakes with Anti-Lock Brake System (ABS)  
Torque Vectoring Control

### DRIVER-ASSIST TECHNOLOGY

Lincoln Co-Pilot360™: auto high-beam headlamps, Blind Spot Detection with cross-traffic alert, Lane-Keeping System (includes lane-keeping assist, lane-keeping alert and Driver Alert), Pre-Collision Assist with Automatic Emergency Braking (AEB) (includes Pedestrian Detection, Forward Collision Warning, and Dynamic Brake Support), and rear view camera  
Hill start assist  
Post-Collision Braking  
Reverse Sensing System  
SYNC® 3 Enhanced Voice Recognition  
Communications and Entertainment System with 8" LCD capacitive touchscreen, 911 Assist®, SYNC 3 AppLink®, Apple CarPlay™ compatibility, Android Auto™ compatibility, and 2 smart-charging USB ports

### AUDIO

Lincoln Premium Sound System with AM/FM stereo/single-CD player, MP3 capability and 11 speakers including a subwoofer  
SiriusXM® with 6-month All Access trial subscription<sup>1</sup>

### DRIVER CONTROLS

Auto Hold  
Dual-zone electronic automatic temperature control  
Lincoln Connect™ 4G LTE embedded modem with Wi-Fi hotspot capability (enables Lincoln Way™ app<sup>2</sup> features when activated)

### EXTERIOR

Acoustic-laminate windshield and front-door glass  
Dual chrome exhaust tips  
Easy Fuel® capless fuel filler  
Hands-free liftgate  
LED headlamps with dynamic signature lighting  
LED taillamps with LED backup lights  
Power-adjustable, autofold, heated, body-color sideview mirrors with memory and integrated LED turn signal indicators  
Rear view camera wash

### INTERIOR

12V powerpoints (4)  
12.3" LCD instrument cluster display  
60/40 split-fold-flat rear seat with recline and EasyFold® seat back release  
Active Noise Control  
Comfort front seats with 10-way power adjustability and driver's side memory feature  
Heated front seats  
Leather-wrapped steering wheel  
Power windows with one-touch-up/-down with global open/close for all 4 windows

### LINCOLN EXPERIENCES

LED-illuminated exterior door handle pockets  
Lincoln Approach Detection System  
Lincoln logo illuminated welcome mats  
Lincoln signature fade-on exterior lighting

### SAFETY AND SECURITY

Personal Safety System™ for driver and front passenger with dual-stage front airbags<sup>3</sup>, safety belt pretensioners, safety belt energy-management retractors, safety belt usage sensors, driver's seat position sensor, crash severity sensor, restraint control module and Front-Passenger Sensing System  
AdvanceTrac® with RSC® (Roll Stability Control™)  
Driver's knee airbag<sup>3</sup>  
Front-seat side airbags<sup>3</sup>  
Glove-box-door-integrated knee airbag<sup>3</sup>  
Intelligent Access with push-button start  
MyKey® technology to help encourage responsible driving  
Perimeter alarm  
Safety Canopy® side-curtain airbags<sup>3</sup>  
SecuriCode™ invisible keypad  
SecuriLock® Passive Anti-Theft System  
SOS Post-Crash Alert System™  
Tire Pressure Monitoring System (excludes spare)

## ENGINES

### Turbocharged 2.0-liter I-4

with Auto Start-Stop Technology

**250** hp @ **5,500** rpm<sup>4</sup>  
**280** lb.-ft. of torque @ **3,000** rpm<sup>4</sup>

EPA-estimated fuel economy ratings<sup>5</sup>

**21** city/**26** hwy/**23** combined mpg

**Standard: FWD**

**20** city/**25** hwy/**22** combined mpg

**Optional: AWD**

### Twin-Turbocharged 2.7-liter V6

with Auto Start-Stop Technology

**335** hp @ **5,500** rpm<sup>4</sup>  
**380** lb.-ft. of torque @ **3,250** rpm<sup>4</sup>

EPA-estimated fuel economy ratings<sup>5</sup>

**20** city/**27** hwy/**22** combined mpg

**FWD**

**19** city/**26** hwy/**21** combined mpg

**AWD**

**Optional: Nautilus Select  
and Nautilus Reserve**



<sup>1</sup>After your trial period ends, SiriusXM audio and data services each require a subscription sold separately, or as a package, by Sirius XM Radio Inc. See SiriusXM Customer Agreement for complete terms at [www.siriusxm.com](http://www.siriusxm.com). All fees and programming subject to change. Trial subscriptions not available in AK and HI. <sup>2</sup>Lincoln Connect includes complimentary 5-year subscription for remote features excluding Wi-Fi hotspot, and starts with vehicle sale date. Subscription is subject to compatible 4G network availability. Evolving technology/cellular networks may affect future functionality. Certain restrictions, 3rd-party terms, or message/data rates may apply. Wi-Fi hotspot includes complimentary wireless data trial that begins upon AT&T activation and expires at the end of 3 months or when 3GB of data is used, whichever comes first, but cannot extend beyond the complimentary subscription period for remote features. To activate, go to [www.att.com/lincoln](http://www.att.com/lincoln). Lincoln Way smartphone app, for use with Lincoln Connect, is available via download and compatible with select smartphone platforms. Lincoln Way is on the App Store® and Google Play™. Learn more at [lincolnway.com](http://lincolnway.com). Message and data rates may apply. <sup>3</sup>Always wear your safety belt and secure children in the rear seat. <sup>4</sup>Horsepower and torque ratings achieved with 93-octane fuel. <sup>5</sup>Actual mileage will vary.





**TRIM SERIES**

**NAUTILUS**

INCLUDES STANDARD FEATURES, PLUS:

- Lincoln Soft-Touch seating surfaces
- Manual-tilt/-telescoping steering column

**OPTIONS**

- 18" all-season snow-chain-compatible tires
- Engine block heater
- Intelligent all-wheel drive (AWD) includes AWD disconnect
- Lincoln Play with DVD (Rear-Seat Entertainment System with 2 pairs of wireless headphones)<sup>1</sup>
- Satin roof-rack side rails
- Cargo Accessories and Mat Package:** floor liners, durable cargo area protector and rear bumper protector

**NAUTILUS SELECT**

INCLUDES CERTAIN NAUTILUS FEATURES, PLUS:

- Ambient lighting
- Auto-dimming driver's sideview mirror
- Bridge of Weir Deepsoft™ leather seating
- Enhanced Security Package:** secondary horn, lockable interior storage, vehicle inclination sensor, and enhanced valet mode
- Headlamp signature lighting light-up sequence
- Illuminated front door-sill scuff plates
- LED fog lamps
- Power-tilt/-telescoping steering column with memory
- Universal garage door opener
- Voice-Activated Touchscreen Navigation System with pinch-to-zoom capability, and integrated SiriusXM Traffic and Travel Link® with 6-year prepaid subscription<sup>2</sup>
- Wireless charging pad

**OPTIONS**

- Intelligent all-wheel drive (AWD) includes adaptive suspension and AWD disconnect
- Engine block heater
- Lincoln Play with DVD (Rear-Seat Entertainment System with 2 pairs of wireless headphones)<sup>1</sup>
- Power panoramic Vista Roof® with power sunshade
- Revel® Audio System with 13 speakers; includes HD Radio™ Technology
- Satin roof-rack side rails
- Cargo Accessories and Mat Package**
- Cargo Utility Package:** Rear Cargo Management System, below-floor molded-plastic storage bins and spare tire cover, reversible cargo mat, 110V/150W AC power outlet, and interior cargo cover
- Class II Trailer Tow Package:** trailer sway control; 3,500 lbs. max (requires Cargo Utility Package)
- Climate Package:** heated rear outboard seats, heated steering wheel, rain-sensing windshield wipers, and windshield wiper de-icer

**NAUTILUS RESERVE**

INCLUDES CERTAIN SELECT FEATURES, PLUS:

- Adaptive suspension
- Dynamic LED signature lighting with cornering lamps
- Heated and ventilated front seats
- Heated rear outboard seats
- Heated steering wheel
- Power panoramic Vista Roof with power sunshade
- Rain-sensing windshield wipers
- Revel Audio System with 13 speakers; includes HD Radio Technology
- Windshield wiper de-icer

**OPTIONS**

- Intelligent all-wheel drive (AWD) includes AWD disconnect
- Engine block heater
- Lincoln Play with DVD (Rear-Seat Entertainment System with 2 pairs of wireless headphones)<sup>1</sup>
- Satin roof-rack side rails
- Ultra Comfort front seats with 22-way power adjustability including thigh extenders and head restraints, plus Active Motion® massage functionality

**Cargo Accessories and Mat Package**

**Cargo Utility Package**

**Class II Trailer Tow Package** (requires Cargo Utility Package)

**Driver Assistance Package:** adaptive cruise control with stop-and-go and lane centering; adaptive steering; and evasive steering assist

**Technology Package:** 360-degree camera, enhanced active park assist, and Forward Sensing System

**Ultimate Package:** 21" premium painted ultra-bright machined aluminum wheels, full LED multi-projector headlamps, and Revel Ultima® Audio System with 19 speakers

**LINCOLN ACCESSORIES**

**ELECTRONICS**

- Bullfrog® portable Bluetooth® speakers<sup>1</sup>
- NextBase® Duo Cinema<sup>1</sup>
- Remote start systems
- Vehicle Security System

**EXTERIOR**

- Cargo basket<sup>1</sup>
- Full vehicle cover<sup>1</sup>
- Racks and carriers<sup>1,3</sup>
- Rear bumper protector
- Side window deflectors<sup>1</sup>
- Splash guards
- Sportz® tent<sup>1</sup>
- Trailer towing accessories
- Wheel lock kits

**INTERIOR**

- Ash cup/coin holder
- Cargo area protector
- Cargo net
- Carpeted floor mats
- Custom UVS100® sunscreen<sup>1</sup>
- First aid and roadside assistance kits<sup>1</sup>
- Floor liners
- In-vehicle safe<sup>1</sup>
- Interior cargo cover
- Soft cargo cooler bag
- Soft cargo organizers (large and standard sizes)
- Tablet cradle<sup>1</sup>

Shop the complete collection at [accessories.lincoln.com](http://accessories.lincoln.com)

**DIMENSIONS**

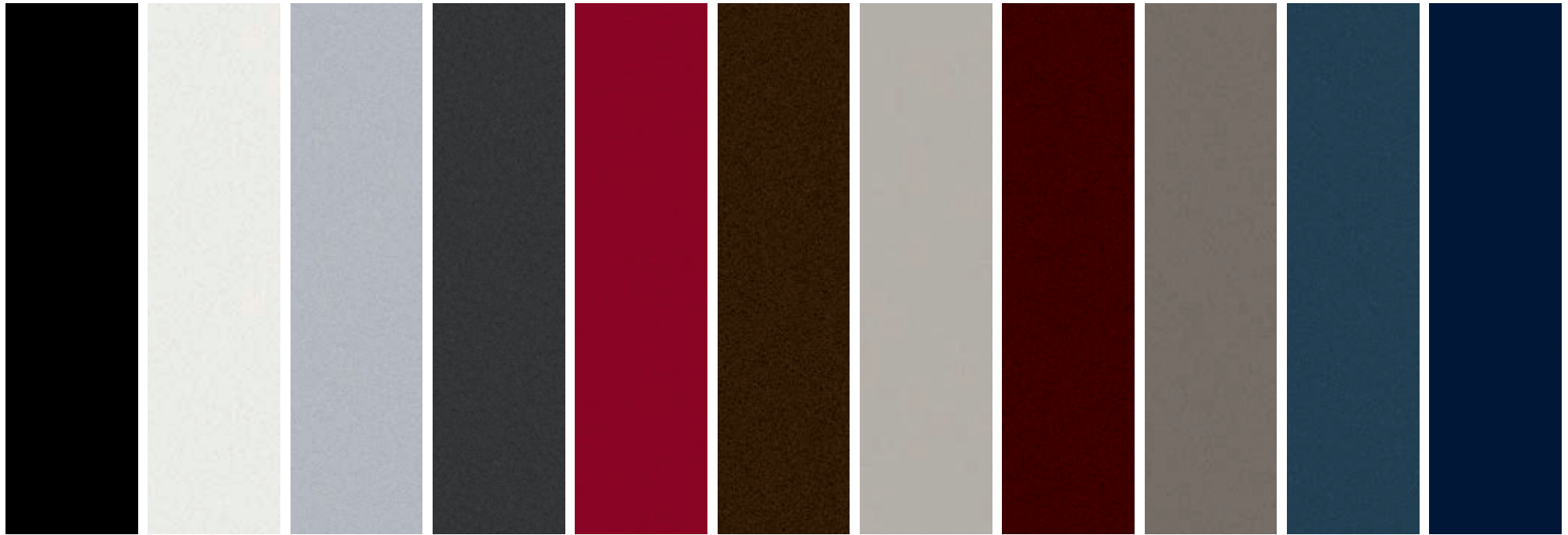
WHEELBASE	112.2"
LENGTH	190.0"
HEIGHT	66.2"
WIDTH	86.1" (including mirrors) 78.7" (mirrors folded)
HEAD ROOM	39.9" front/39.2" rear
LEG ROOM	42.8" (max.) front/39.6" rear
HIP ROOM	56.4" front/55.6" rear
SHOULDER ROOM	58.9" front/59.0" rear
CARGO VOLUME	68.8 cu. ft. behind front seats 37.2 cu. ft. behind rear seats
FUEL TANK	18.0 gal.

<sup>1</sup>Lincoln Licensed Accessory. <sup>2</sup>After your trial period ends, SiriusXM audio and data services each require a subscription sold separately, or as a package, by Sirius XM Radio Inc. See SiriusXM Customer Agreement for complete terms at [www.siriusxm.com](http://www.siriusxm.com). All fees and programming subject to change. Trial subscriptions not available in AK and HI. <sup>3</sup>Consult owner's manual for details on roof-rack limits.

Lincoln Original Accessories will be warranted for whichever provides you the greatest benefit: 24 months/unlimited mileage, or the remainder of your Bumper-to-Bumper 4-year/50,000-mile New Vehicle Limited Warranty. Lincoln Licensed Accessories (LLA) are warranted by the accessory manufacturer's warranty. LLA are designed and developed by the accessory manufacturer and have not been designed or tested to Ford Motor Company engineering requirements. Contact your Lincoln Dealer for details and/or a copy of all limited warranties. Amazon, Alexa and all related logos are trademarks of Amazon.com, Inc. or its affiliates. Android Auto, Google, Google Play, Waze and other marks are trademarks of Google Inc. Apple, Apple CarPlay and iPhone are trademarks of Apple Inc., registered in the U.S. and other countries. App Store is a service mark of Apple Inc. Bridge of Weir is a trademark of Bridge of Weir Leather Company Limited. Bullfrog is a registered trademark of Stillwater Designs. Clari-Fi, QuantumLogic, Revel, Ultima and the Revel logo are trademarks of HARMAN International Industries, registered in the United States and other countries. "HD Radio" and the HD Radio logo are proprietary trademarks of iBiquity Digital Corporation. Sirius, XM, SiriusXM, and all related marks and logos are trademarks of Sirius XM Radio Inc. The Bluetooth word mark is a trademark of the Bluetooth SIG, Inc.

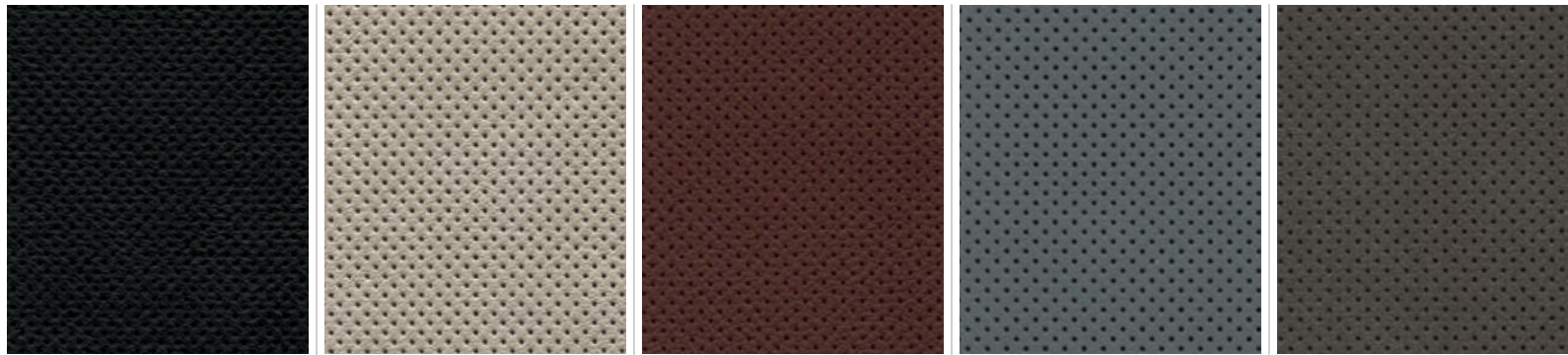


EXTERIOR FINISHES



1 Infinite Black Metallic  
 2 White Platinum Metallic Tri-coat<sup>1</sup>  
 3 Ingot Silver Metallic  
 4 Magnetic Gray Metallic  
 5 Ruby Red Metallic Tinted Clearcoat<sup>1</sup>  
 6 Ochre Brown Metallic  
 7 Ceramic Pearl Metallic Tri-coat<sup>1</sup>  
 8 Burgundy Velvet Metallic Tinted Clearcoat<sup>1</sup>  
 9 Iced Mocha Metallic<sup>1</sup>  
 10 Blue Diamond Metallic  
 11 Rhapsody Blue<sup>1</sup>

INTERIOR PALETTE



**Ebony**  
 Brushed Aluminum, Brown Swirl Walnut, Sonata Spin Aluminum

**Cappuccino**  
 Brushed Aluminum, Espresso Ash Swirl, Sonata Spin Aluminum

**Terracotta**  
 Brown Swirl Walnut, Sonata Spin Aluminum

**Medium Slate**  
 Gray Ash Swirl, Sonata Spin Aluminum

**Coffee**  
 Espresso Ash Swirl, Sonata Spin Aluminum

INTERIOR	EXTERIOR
Ebony <sup>2</sup>	
Brushed Aluminum	Nautilus 1-10
Brown Swirl Walnut	Select 1-10 Reserve 1-11
Sonata Spin Aluminum <sup>3</sup>	Select 1-10 Reserve 1-11
Cappuccino <sup>2</sup>	
Brushed Aluminum	Nautilus 1-10
Espresso Ash Swirl	Select 1-10 Reserve 1-11
Sonata Spin Aluminum <sup>3</sup>	Select 1-10 Reserve 1-11
Terracotta	
Brown Swirl Walnut	Reserve 1-4
Sonata Spin Aluminum <sup>3</sup>	Reserve 1-4
Medium Slate	
Gray Ash Swirl	Reserve 1-5, 10, 11
Sonata Spin Aluminum <sup>3</sup>	Reserve 1-5, 10, 11
Coffee	
Espresso Ash Swirl	Select 1-10 Reserve 1-11
Sonata Spin Aluminum <sup>3</sup>	Select 1-10 Reserve 1-11

Colors are representative only. <sup>1</sup>Additional charge. <sup>2</sup>Lincoln Soft-Touch seating surfaces standard on Nautilus. <sup>3</sup>Optional.







18" Warm Alloy Painted Aluminum  
**NAUTILUS**



18" Premium Painted Bright-Machined Aluminum  
**NAUTILUS SELECT**



20" Premium Painted Bright-Machined Aluminum  
**NAUTILUS RESERVE**



21" Premium Painted Ultra-Bright Machined Aluminum  
**NAUTILUS RESERVE. Optional**



20" Premium Painted Ultra-Bright Machined Aluminum  
**NAUTILUS SELECT. Optional**

